

NOTES:

1. FOR GRAVITY APPLICATIONS ONLY.
2. ALL PROCEPTOR UNITS ARE MANUFACTURED WITH FIBERGLASS REINFORCED PLASTICS. PHYSICAL CHARACTERISTICS AND THICKNESS: POLYESTER RESIN AND E GLASS MINIMUM THICKNESS 1/4" WALL AND 3/8" TOP AND BOTTOM BOWLS.
3. ALL PROCEPTOR UNITS ARE TO BE INSTALLED IN ACCORDANCE WITH THE MANUFACTURERS INSTALLATION INSTRUCTION.
4. STANDARD PIPING IS SCH. 40 PVC.
5. GMC/OMC 500 - 3000 UNITS COME STANDARD WITH 4" INLET AND OUTLET (OTHER PIPE SIZE OPTIONS AVAILABLE ON REQUEST).
6. EXTENSION COLLAR TO BE ORDERED TO MEET FINISHED GRADE, CUT ON SITE FOR FINAL ADJUSTMENT AND CAULKED WITH SIKAFLEX BY CONTRACTOR FOR WATERTIGHT SEAL.
7. COVERS AVAILABLE FOR H2O TRAFFIC LOADING, PEDESTRIAN LOADING OR ABOVE GROUND INSTALLATION.
8. CONSULT GREEN TURTLE FOR OTHER SIZES.
9. 30 YEAR WARRANTY AGAINST LEAKS, AND STRUCTURAL FAILURE.
10. U.S. PATENT #5,746,912; CDN PATENT #2,195,822

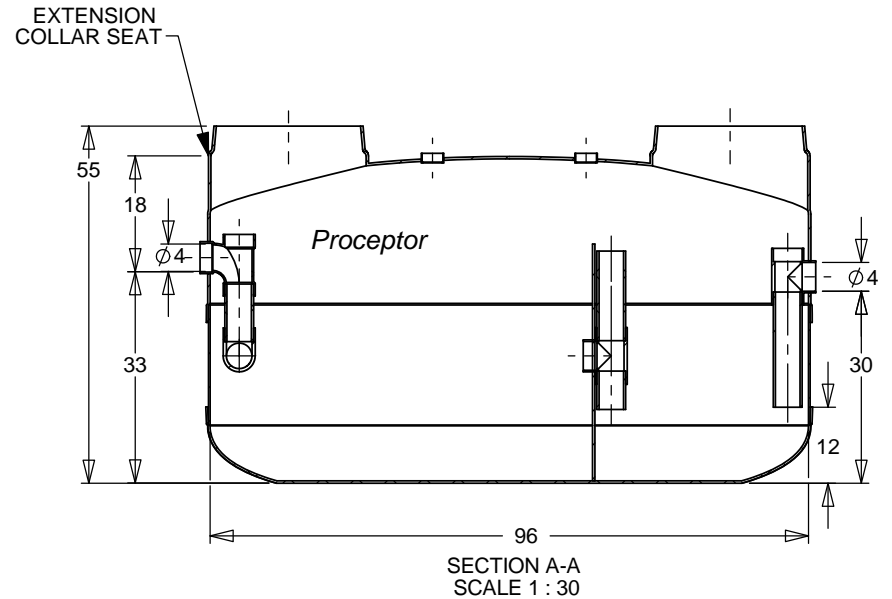
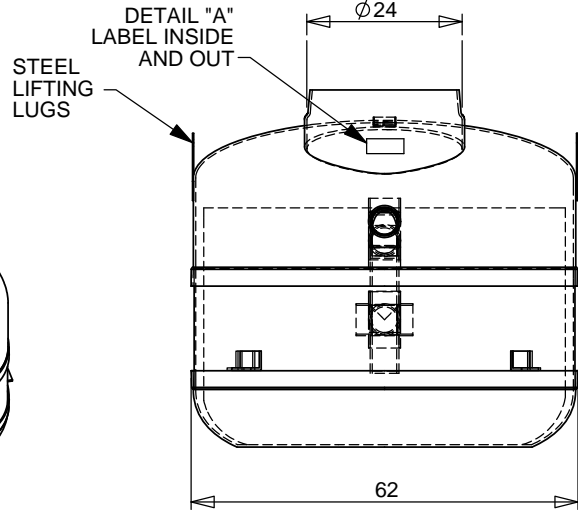
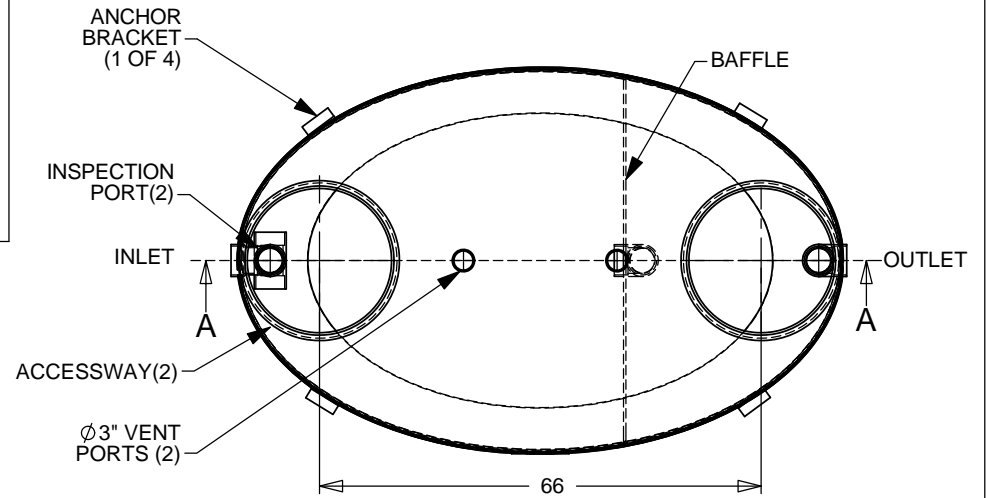
US PAT. # 5746912

Proceptor[®]

MANUFACTURER: GREEN TURTLE TECHNOLOGIES

PROCEPTOR MODEL NUMBER: GMC-500
 STANDARD: PDI-G101 and ASME A112.14.3
 LIQUID CAPACITY (WORKING VOLUME): 500 US GAL
 RATED FLOW: 100 GPM
 PRODUCT TYPE BY RATING: TYPE A
 EFFICIENCY AT THE RATED CAPACITY: 90%
 STD. MAX BURIAL DEPTH TO TOP OF TANK: 6 FT.
 MAX VERTICAL LOAD: 1133 PSF
 MONTH/YEAR OF MANUFACTURE:

DETAIL "A"



SECTION A-A
SCALE 1 : 30

Must be installed with flow control device supplied with each unit

TOTAL WET VOLUME:	500 GAL
GREASE VOLUME:	279 GAL
SOLIDS VOLUME:	87 GAL
SIZED PER PDI-G 101 STANDARD	
ASME A112.14.3 / PDI-G 101 CERTIFIED	
RATED FLOW:	100 GPM
PRODUCT TYPE BY RATING:	TYPE A
EFFICIENCY AT RATED CAPACITY:	90%
RATED GREASE CAPACITY:	200 LBS
CONSULT LOCAL AUTHORITIES FOR MINIMUM SIZE OF SEPARATORS	

TITLE: PROCEPTOR F.O.G. SEPARATOR GMC-500 IAP 4" 24"		REV	DATE	DRAWN
PROJECT: WO:		1	JANUARY 2, 2007	L. SIMKINS
AVAILABLE OPTIONS (CHECKED IF REQUESTED)		2		
OIL/GREASE SENSOR ALARM		3	MAY 21, 2008	L. SIMKINS
SUCTION PIPE FOR INDOOR INSTALLATION		4	NOVEMBER 13, 2009	L. SIMKINS
COALESCER (FOR OIL ONLY) 10ppm TREATMENT		5	APRIL 2, 2012	L. SIMKINS
DOUBLE WALL CONSTRUCTION		6	OCTOBER 01, 2012	S. MANGAT
		7	JANUARY 16, 2013	S. MANGAT
		8	SEPTEMBER 02, 2014	S. MANGAT
		9	JAN. 20, 2015	
		10		
		DRAWN BY: L. SIMKINS		
		DATE DRAWN: 6/15/04		

Proceptor[®]
 by greenturtle[®]
 US 877 428 8187 CAN 877 966 9444
 www.greenturtletech.com

SIZE	DWG. NO.	REV.
A	GMC-500 IAP	9

SCALE: 1:30 DO NOT SCALE DRAWING SHEET 1 OF 1