

# GMC -P UPC TWO TANK INSTALLATION DRAWING

## NOTES:

1. REFER TO INSTALLATION PROCEDURE AND INSTALLATION CHECKLIST.
2. PROCEPTOR SEPARATORS MUST BE INSTALLED IN ACCORDANCE WITH ALL RELEVANT FEDERAL, PROVINCIAL/STATE, AND LOCAL CODES INCLUDING LOCAL PLUMBING CODE.
3. US PATENT # 5,746,912; CDN PATENT # 2,195,822

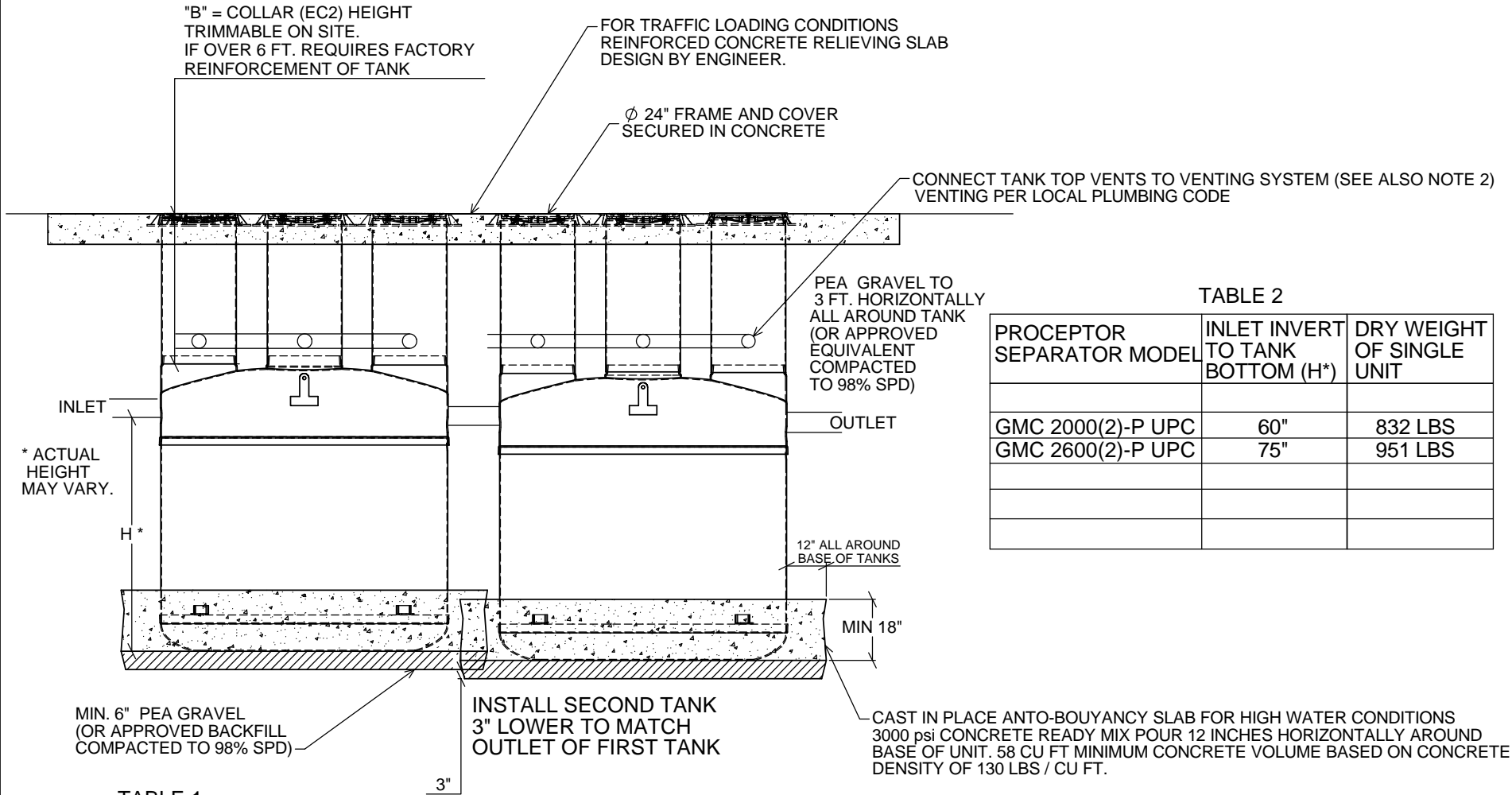


TABLE 2

PROCEPTOR SEPARATOR MODEL	INLET INVERT TO TANK BOTTOM (H*)	DRY WEIGHT OF SINGLE UNIT
GMC 2000(2)-P UPC	60"	832 LBS
GMC 2600(2)-P UPC	75"	951 LBS

TABLE 1

BURIAL DEPTH	B
Max.	6 ft.
Min. with Traffic	18"
Min. with Alarm	14"
Min. no Traffic	** 12"

\*\* ESTIMATED SPACE REQUIRED TO FIT VENT ELBOWS UNDER FLOOR.

TITLE: PROCEPTOR F.O.G. SEPARATOR  
INSTALL GMC -P UPC TWO TANK

PROJECT: WO:

AVAILABLE OPTIONS (CHECKED IF REQUESTED)

REV	DATE	DRAWN
1		
2		
3		
4		
5		
6		
7		
8		
9		
10		

DRAWN BY: S. MANGAT

DRAWN DATE: 2018/08/08

**Proceptor**

**ZURN**

SIZE	DWG. NO.	REV.
A	INSTALL OMC UPC TWO TANK	0

SCALE: 1:50 DO NOT SCALE DRAWING SHEET 1 OF 1