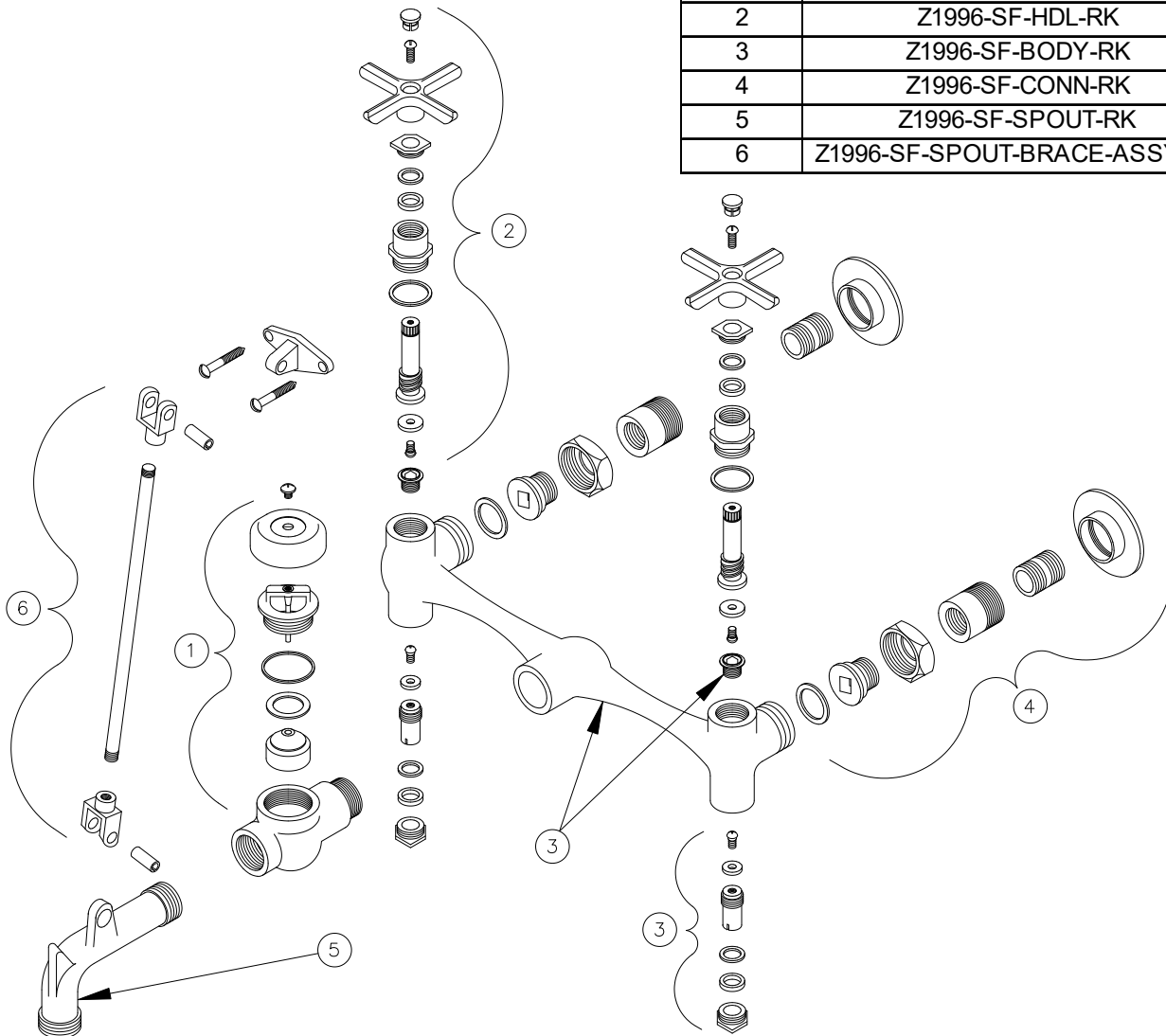


Dimensional data (inches and [mm]) are subject to manufacturing tolerances and change without notice.

Item	Description	Qty
1	Z1996-SF-VB-RK	1
2	Z1996-SF-HDL-RK	2
3	Z1996-SF-BODY-RK	1
4	Z1996-SF-CONN-RK	2
5	Z1996-SF-SPOUT-RK	1
6	Z1996-SF-SPOUT-BRACE-ASSY-RK	1



INSTALLATION INSTRUCTIONS

1. Plumb hot and cold water supply lines to wall on 8 [203] centerlines.
2. Use eccentric fittings supplied with faucet to attach the faucet body to the supply lines.
3. Attach support bracket to the end of the spout with spring pin provided.
4. Level faucet body so that it is perpendicular to wall, and fasten the support bracket to the wall with the fasteners provided.

NOTE: Shut off valves have been provided at each supply for easy access to the shut-off washers and seats should replacement ever be needed.

⚠ WARNING: Cancer and Reproductive Harm - www.P65Warnings.ca.gov

⚠ ADVERTENCIA: Cáncer y daño reproductivo - www.P65Warnings.ca.gov

⚠ AVERTISSEMENT: Cancer et effets néfastes sur la reproduction - www.P65Warnings.ca.gov