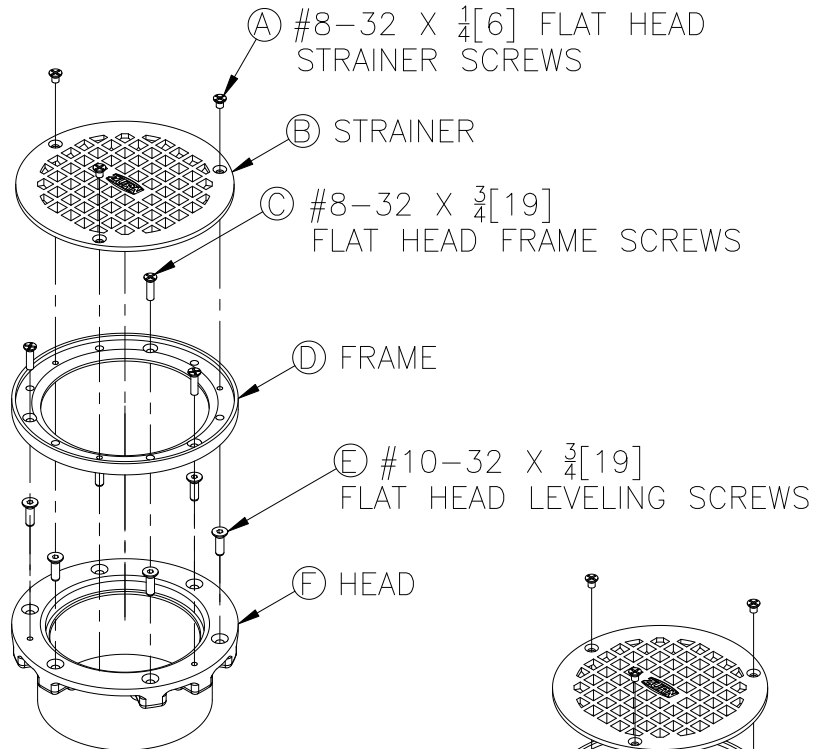




Z400BZ INSTALLATION INSTRUCTIONS

Dimensional Data (inches and [mm]) are Subject to Manufacturing Tolerances and Change Without Notice



Step 1 Loosen and remove the three #8-32 x 1/4 [6] lg. flat head strainer screws (A) that secure the strainer (B) to the frame. (D)

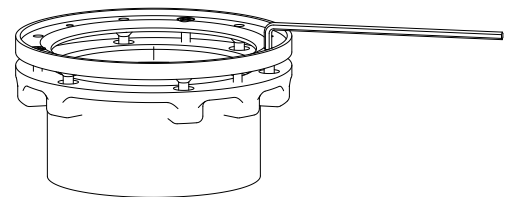
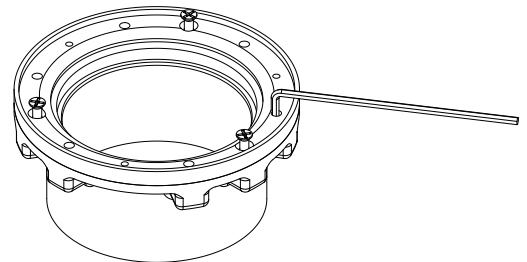
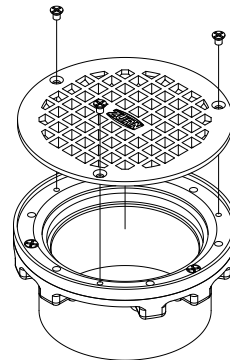
Step 2 Remove the strainer. (B)

Step 3 Loosen but do not remove the three #8-32 x 3/4 [19] lg. flat head screws that secure the frame (D) to the head. (F)

Step 4 Using a 1/8" allen wrench, insert the allen wrench through any of the six guide holes in the frame (D) to engage the #10-32 x 3/4 [19] lg flat head leveling screws. (E)

Step 5 Turn the allen wrench counter-clockwise to loosen and raise the leveling screw (E) underneath the frame. (D)

Step 6 Repeat with all six leveling screws (E) as necessary. The leveling screws (E) can be used to raise the entire frame (D) a set height or to adjust the frame (D) positioning to make level with the finished floor. Maximum adjustment height of the frame (D) is 3/8" [10mm].



⚠️ WARNING: Cancer and Reproductive Harm - www.P65Warnings.ca.gov

⚠️ ADVERTENCIA: Cáncer y daño reproductivo - www.P65Warnings.ca.gov

⚠️ AVERTISSEMENT: Cancer et effets néfastes sur la reproduction - www.P65Warnings.ca.gov

Zurn Industries, LLC | Specification Drainage Operation

1801 Pittsburgh Avenue, Erie, PA U.S.A. 16502 · Ph. 855-663-9876, Fax 814-454-7929

In Canada | Zurn Industries Limited

3544 Nashua Drive, Mississauga, Ontario L4V 1L2 · Ph. 905-405-8272, Fax 905-405-1292

www.zurn.com

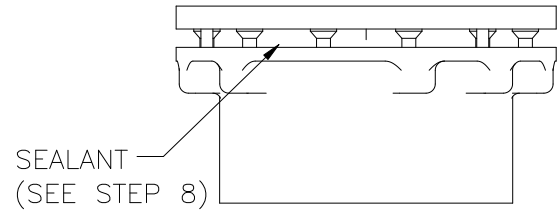
Rev. A
Date: 04/06/2018
C.N. No. 139849
Form No. FD86



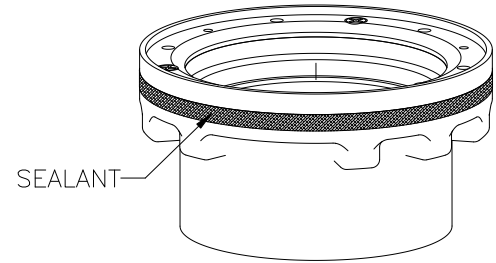
Z400BZ INSTALLATION INSTRUCTIONS

Dimensional Data (inches and [mm]) are Subject to Manufacturing Tolerances and Change Without Notice

- Step 7** Once the frame (D) is adjusted to its required position, retighten the three #8-32 x 3/4 [19] lg. flat head frame screws (C) to secure the frame. (D) The frame (D) should now rest on all of the leveling screws. (E)



- Step 8** Apply a suitable and sufficient amount of sealant between the raised frame (D) and the cast iron head (F) to make a watertight seal.



- Step 9** Replace the strainer (B) onto the frame (D) and secure strainer with the three #8-32 x 1/4 [6] lg. flat head strainer screws. (A)

INSTALLATION NOTES:

- * When adjusting the leveling screws upward to raise the frame, care should be taken to prevent damage to the existing concrete around the frame.
- * The leveling screws should be adjusted in an alternating fashion to slowly raise the frame up to required position.
- * Maximum flat adjustment height of the frame is 3/8" [10 mm].
- * Maximum sloped adjustment height is 7/8" [22 mm] per foot.