



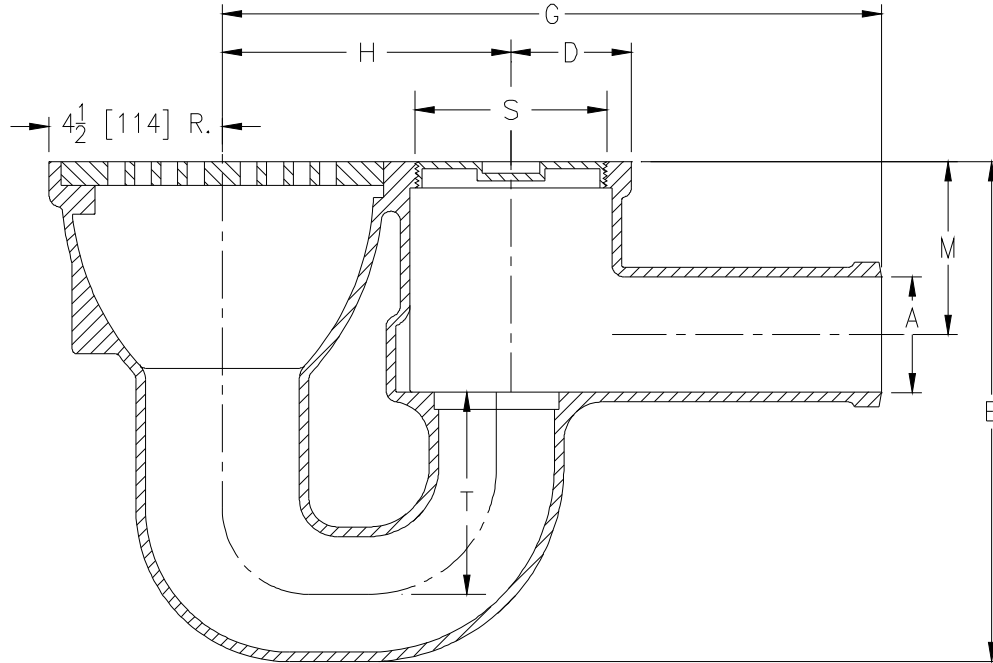
Z730

® 9[229] TOP MEDIUM-DUTY DRAIN

SPECIFICATION SHEET

TAG _____

Dimensional Data (inches and [mm]) are Subject to Manufacturing Tolerances and Change Without Notice



Dimensions in In [mm]							Approx. Wt. Lbs. [kg]	Grate Open Area Sq. In. [cm ²]
A Pipe Size	S Cleanout Plug Size	Rad D.	G	H	M	T		
3 [76]	4-1/2 NPT	3-1/8 [79]	17-1/8 [435]	7-1/2 [191]	4-1/4 [108]	4 [102]	54 [24]	23 [148]
4 [102]	5-1/2 NPT	3-5/8 [92]	19-3/8 [492]	7-1/2 [191]	4-3/4 [121]	5 [127]	79 [36]	

ENGINEERING SPECIFICATION ZURN Z730

9" [229mm] Diameter top drain, Dura-Coated cast iron body with integral double wall trap and side outlet, with bronze floor level cleanout plug and medium-duty loose slotted grate.

OPTIONS (Check/specify appropriate options)

PIPE SIZE

3 [76]

4 [102]

(Specify size/type) **OUTLET**

___ SP Spigot

___ SP Spigot

'E' BODY HT. DIM.

13 [330]

16 [406]

PREFIXES

___ Z D.C.C.I. Body and Top*

___ ZN D.C.C.I. Body with Polished Nickel Bronze Top (Add 3/16 [5] to 'M' and 'E' Dim.)

SUFFIXES

- ___ -DG Duresist Grate
- ___ -G Galvanized Cast Iron
- ___ -J Auxiliary Inlet Connection
- ___ -K Anchor Flange
- ___ -P Trap Primer Connection
- ___ -V Backwater Valve
- ___ -VP Vandal-Proof Secured Top
- ___ -Y Sediment Bucket

* Regularly furnished unless otherwise specified.