



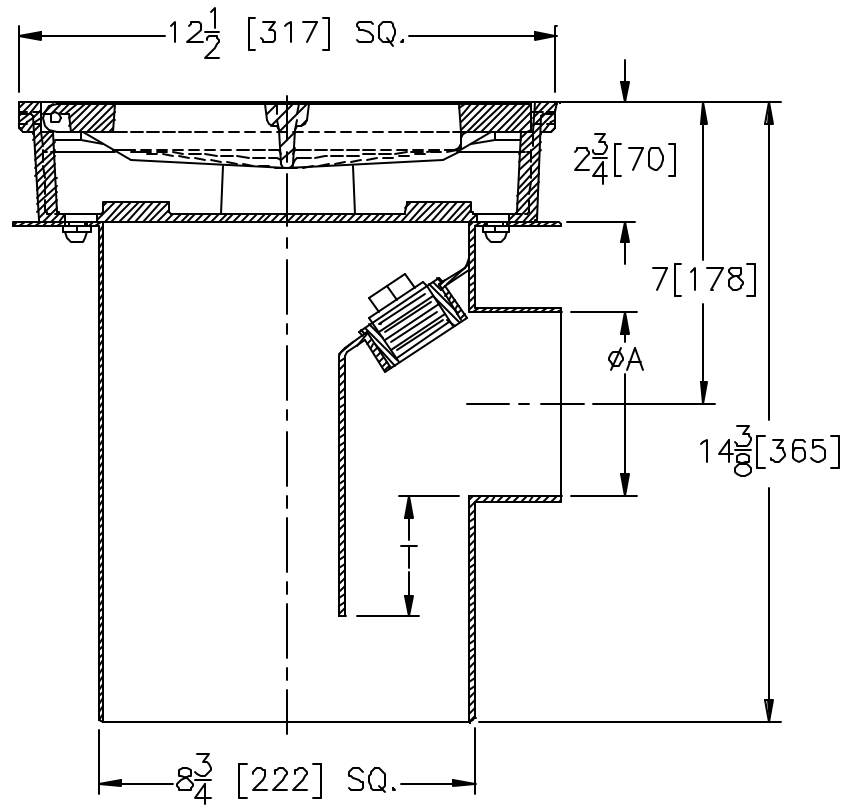
Z-645
12" [305] x 12" [305]
HEAVY-DUTY DRAIN WITH INTERNAL TRAP

SPECIFICATION SHEET

TAG _____



Dimensional Data (inches and [mm]) are Subject to Manufacturing Tolerances and Change Without Notice



A Pipe Size Inches / [mm]	Approx. Wt. Lbs. / [kg]	Grate Open Area Sq. In. / [sq cm]
2-3-4-6 [51-76-102-152]	51 [23]	44 [284]

ENGINEERING SPECIFICATION: ZURN Z-645
 12" [305] x 12" [305] extra-heavy-duty side outlet body, internal trap and cleanout, seepage pan and combination heavy-duty membrane flashing clamp and frame for cast iron hinged extra-heavy-duty slotted grate, with suspended sediment bucket.

OPTIONS (Check/specify appropriate options)

PIPE SIZE

2,3,4,6 [51,76,102,152]

(Specify size/type) **OUTLET**

_____ NH No-Hub

PREFIXES

- _____ Z- Fabricated Steel Body*
 - _____ ZN- Polished Nickel Bronze Top*
- *Add 3/16" [5] to Min./Max. Dimension

SUFFIXES

- _____ -DG Duresist Grate
- _____ -G Galvanized
- _____ -HL Hinged Locking Grate
- _____ -P 1/2" [13] Trap Primer Connection
- _____ -VP Vandal-Proof Secured Top

REV. B	DATE: 06/07/02	C.N. NO. 84365
DWG. NO. 63668	PRODUCT NO. Z-645	

*REGULARLY FURNISHED UNLESS OTHERWISE SPECIFIED

