

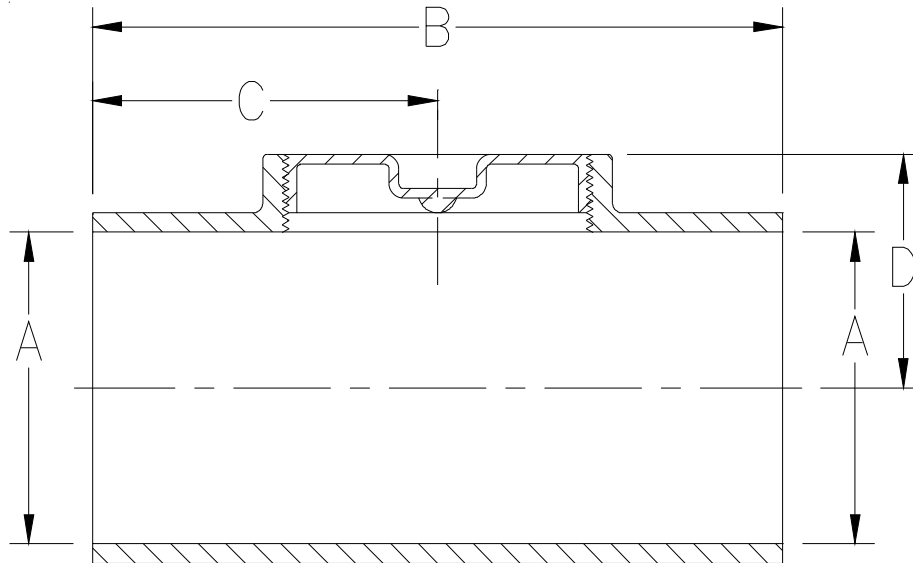


**Z1445**  
CLEANOUT TEE

SPECIFICATION SHEET

TAG \_\_\_\_\_

Dimensional Data (inches and [ mm ]) are Subject to Manufacturing Tolerances and Change Without Notice



A- Pipe Size	Dimensions in In [mm]			Approx. Wt. Lbs. [kg]
	NH			
	B	C	D	
2 [51]	6-3/8 [162]	3-3/16 [81]	1-3/4 [44]	8 [4]
3 [76]	7-3/4 [197]	3-7/8 [98]	2-1/2 [64]	15 [7]
4 [102]	8-7/8 [225]	4-7/16 [113]	3 [76]	16 [7]
6 [152]	12-1/2 [318]	6-1/4 [159]	4-5/16 [110]	35 [16]
8 [203]	17 [432]	8-1/2 [216]	6-3/8 [162]	49 [22]

**ENGINEERING SPECIFICATION: ZURN Z1445**  
Cleanout Tee. Dura-Coated cast iron body with gas and watertight ABS tapered thread plug.

**OPTIONS** (Check/specify appropriate options)

**PIPE SIZE**

2,3,4,6,8 [51,76,102,152,203]

(Specify size/type) **OUTLET**

\_\_\_\_\_ NH No-Hub

**PREFIXES**

\_\_\_\_\_ Z Dura-Coated Cast Iron\*

**SUFFIXES**

\_\_\_\_\_ -BP Bronze Plug  
\_\_\_\_\_ -G Galvanized Cast Iron

\* Regularly furnished unless otherwise specified.