

# Model 950, 950XL, 975 & 975XL

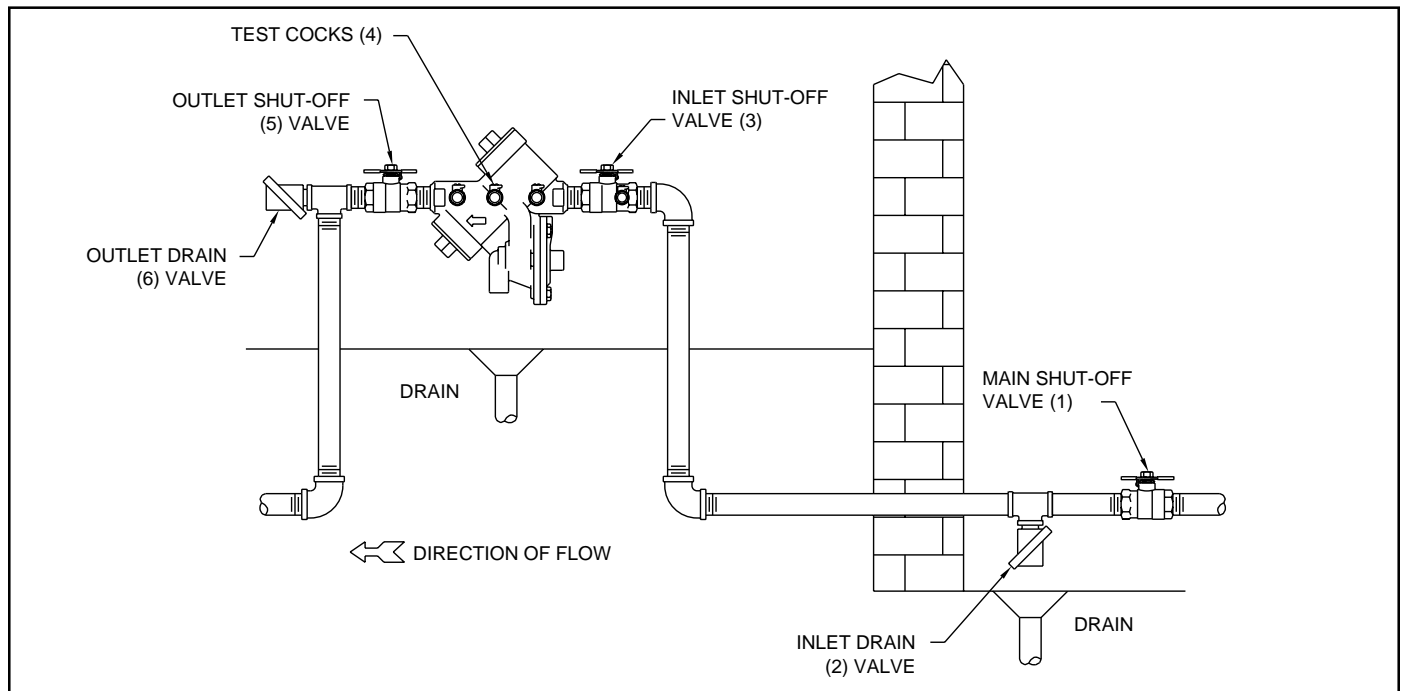
Double Check Valve Backflow Preventer

Reduced Pressure Principle Backflow Preventer

# WILKINS

a ZURN company

## Draining Procedure for Freeze Protection



**To drain backflow preventer for freeze protection, use the following procedure:**

1. Turn off main shut-off valve (1) that supplies water to the system.
2. Open both inlet and outlet drain valves in the system (2 & 6). Open inlet and outlet shut-off valves on the backflow preventer (3 & 5) and all of the test cocks (4). Leave all valves and test cocks in the half open/half closed (45°) position to allow full drainage of the ball valves and test cocks.
3. If you wish to "blow out" the system downstream of the backflow preventer, make sure the outlet drain valve (6) is open and the backflow preventer shut-off valve (5) is closed.
4. Connect an air hose to the outlet drain valve (6) and inject an adequate volume of air to remove all water from the downstream portion of the system.
5. **CAUTION:** Open outlet shut-off valve to the backflow preventer (5) and outlet drain valve (6) to the half open/half closed (45°) position after "blow out" process is completed.
6. Leave all drain valves (2 & 6), shut-off valves (3 & 5) and test cocks (4) in the half open/half closed position (45°) for the duration of the winter to prevent freezing. **CAUTION:** Be certain that main shut-off valve (1) remains tightly closed to prevent refilling of the system. Also, the main shut-off valve must be resilient seated to insure no leakage of water into the system.

**WARRANTY:** WILKINS Valves are guaranteed against defects of material or workmanship when used for the services recommended. If in any recommended service, a defect develops due to material or workmanship, and the device is returned, freight prepaid, to WILKINS within 12 months from date of purchase, it will be repaired or replaced free of charge. WILKINS' liability shall be limited to our agreement to repair or replace the valve only.

**Proposition 65 Warning** This product contains chemicals known to the State of California to cause cancer or birth defects or other reproductive harm.

# WILKINS

a ZURN company

**WILKINS OPERATION OF ZURN PLUMBING PRODUCTS**