

No-touch, Low-maintenance Flushing

Top Mount Exposed Sensor
Flush Valves for Water Closets
and Urinals With Ceramic Gears
and AquaVantage® Diaphragms

When it comes to lasting performance, this flush valve collection rises above the rest. Its winning combination of gear-driven ceramic cartridge operation and thermoplastic elastomer (TPE) diaphragm delivers superior reliability and outperforms solenoid-operated models.



On-demand Flushing

True mechanical override button allows for manual flushing when needed.



Long-lasting Performance

Uses EZ Gear technology, a gear-driven ceramic cartridge that is less susceptible to debris and buildup for easy maintenance; outlasts and outperforms solenoids.



Hygienic, Auto Activation

Touchless sensor activation minimizes touch points and potential spread of germs.



Minimizes Stagnation

Toggle feature for optional 24-hour line flushing to minimize stagnation and maintain fixture trap seals that protect against sewer gases.



Chemical Resistant

Industry-leading, filtered AquaVantage® diaphragm, gaskets and seals are made of chemical-resistant thermoplastic elastomer, which lasts 8-10 times longer than traditional rubber, reducing maintenance costs.



Durable and Attractive

Heavy-duty brass body with polished chrome finish stands up to extreme wear, while maintaining luster.

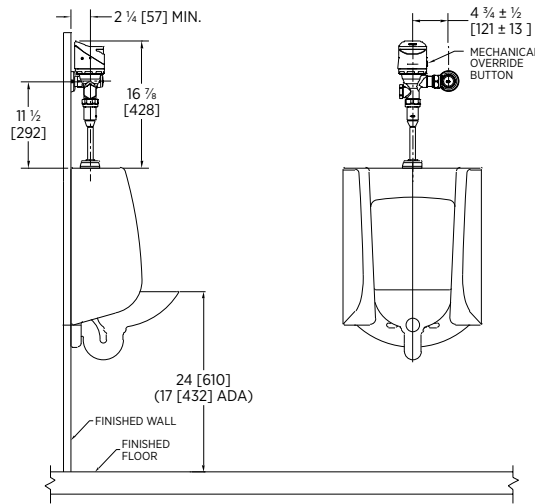


NO SOLENOID

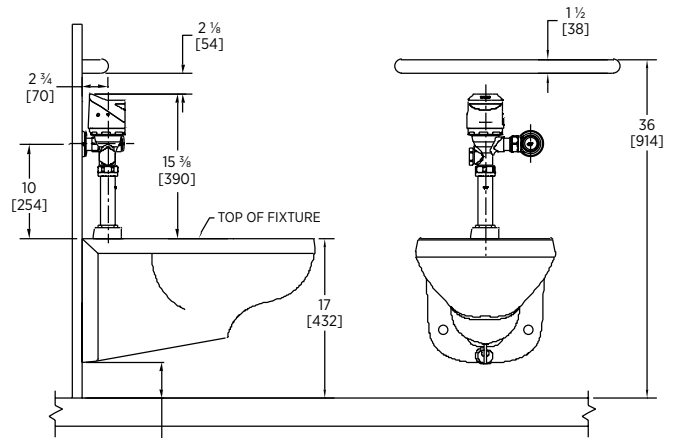
ZER6000AV-TM

Top Mount Exposed Sensor Flush Valves for Water Closets and Urinals With Ceramic Gears and AquaVantage® Diaphragms

Find more information at:
[zurn.com/products/finish-plumbing/
sensor-flush-valves/gear-driven-battery-powered](http://zurn.com/products/finish-plumbing/sensor-flush-valves/gear-driven-battery-powered)



Urinal Rough-in Dimensions



Water Closet Rough-in Dimensions

Meets the ADA and ANSI A117.1 guidelines when installed according to these requirements. In Canada — Consult local codes and standards. See installation instructions on zurn.com for hardwired models.

Engineering Specification

This flush valve is performance engineered with a ceramic disc cartridge and motor gear-driven operation. Its polished chrome-plated finish, modern top-mount design, and quiet diaphragm operation make it ideal for new and retrofit commercial restroom applications, such as higher education facilities.

Compliance and Certification

- ADA compliant
- Complies with ASSE 1037/ASME A112.1037/CSA B125.37

Product Features

- Zurn's AquaVantage TPE diaphragm
 - Clog-resistant bypass
 - Chloramine resistant
- Actuator
 - Electronic automatic sensor
 - Gear-driven ceramic cartridge
- True mechanical override button
- Hardwired models with battery backup
- Chloramine-resistant internal seals
- Control Stop
 - Internal siphon-guard protection
 - Vandal-resistant stop cap
 - Sweat solder kit
 - Cast wall flange with set screw
- Operating pressure
 - 25 psi (running)–80 psi (static)

Many Options Available

Available in battery-operated, hardwired or retrofit models for water closets and urinals.



ZER6000AV-TM

BATTERY-OPERATED FLUSH VALVES	
Water Closets	GPF
ZER6000AV-ONE-TM	1.1
ZER6000AV-HET-TM	1.28
ZER6000AV-WS1-TM	1.6
ZER6000AV-DF-TM	1.1/1.6
Urinals	GPF
ZER6003AV-ULF-TM	0.125
ZER6003AV-EWS-TM	0.5
ZER6003AV-WS1-TM	1.0



ZER6003AV-TM-HW

HARDWIRED FLUSH VALVES	
Water Closets	GPF
ZER6000AV-ONE-TM-HW	1.1
ZER6000AV-HET-TM-HW	1.28
ZER6000AV-WS1-TM-HW	1.6
ZER6000AV-DF-TM-HW	1.1/1.6
Urinals	GPF
ZER6003AV-ULF-TM-HW	0.125
ZER6003AV-EWS-TM-HW	0.5
ZER6003AV-WS1-TM-HW	1.0