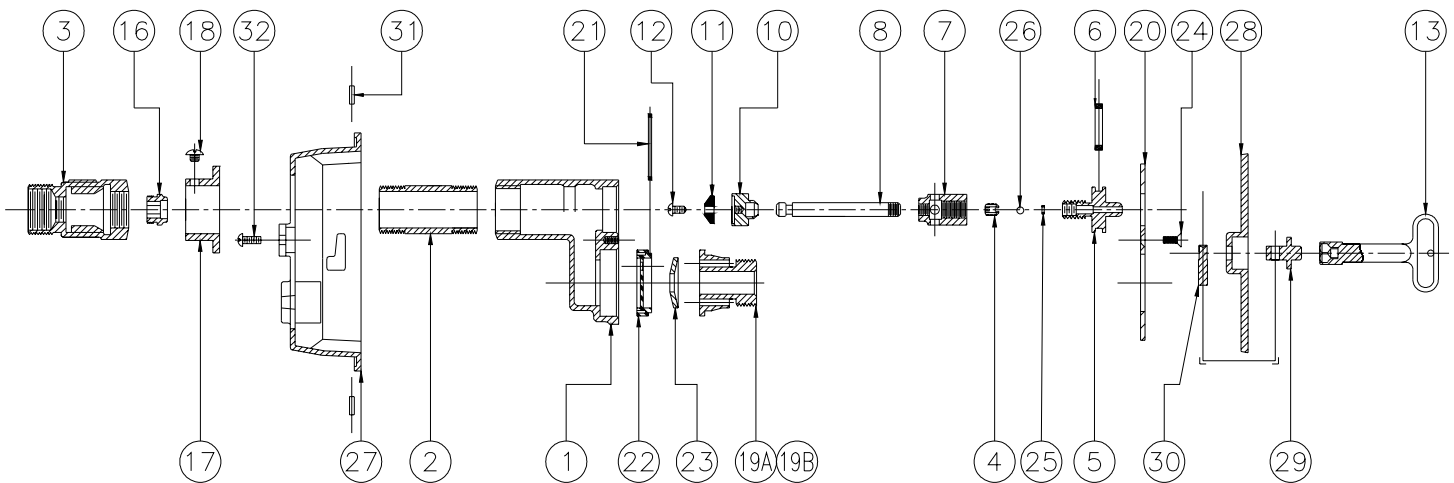
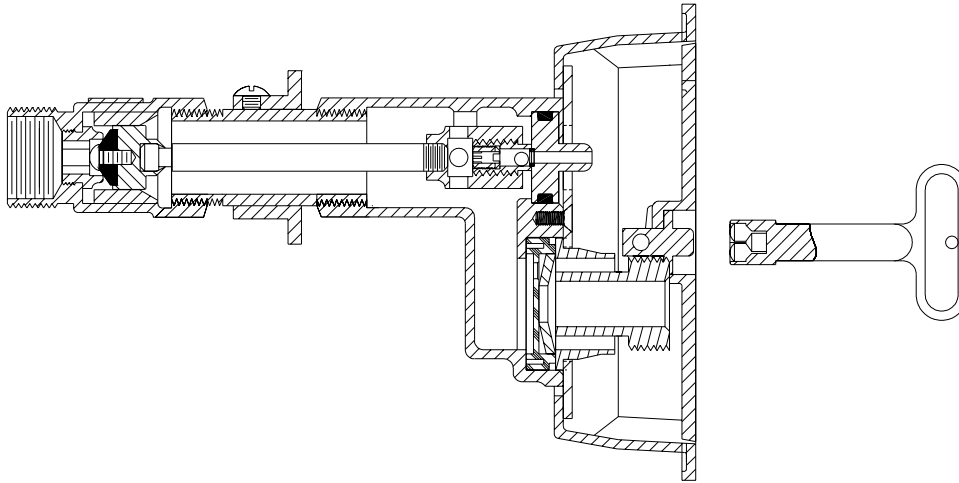




# Z1300 WALL HYDRANT ASSEMBLY



LIST OF MATERIAL			
IT.	QTY	PART NO.	DESCRIPTION
1	1	56061-003	HEAD
2	1	50270-XXX	CASING
3	1	31258-001	VALVE HOUSING
*	4	51459-001	SET SCREW
*	5	25049-002	OPERATING SCREW
*	6	23750-028	O-RING
*	7	25147-001	OPERATING COUPLING
8	1	45042-XXX	OPERATING ROD
10	1	25050-001	WASHER GUIDE
*	11	23075-001	WASHER
*	12	14853-042	SCREW #10-24 N.C.
*	13	59546-001	KEY
*	16	25262-001	REMOVABLE SEAT
17	1	50268-001	WALL CLAMP (OPT)
18	1	26050-004	WALL CLAMP SCREW (OPT)

LIST OF MATERIAL			
IT.	QTY	PART NO.	DESCRIPTION
19A	1	50799-005	3/4" NOZZLE
19B	1	50799-006	1" NOZZLE
20	1	56115-005	FACEPLATE
*	21	23750-204	DISC O-RING
*	22	50819-001	DISC
*	23	50785-001	"EQUA-BALANCE" SEAL
24	5	22698-047	FACEPLATE SCREW
*	25	23750-232	BALLO-RING
*	26	51458-001	BALL
27	1	56068-002	HYDRANT BODY
28	1	56069-001	HYDRANT COVER
29	1	25306-001	LOCKING PIN MOUNTING
30	1	25307-001	LOCKING PIN
31	2	45553-008	HINGE PIN
32	2	14853-044	SCREW #10-24 N.C.

\* ITEMS ARE AVAILABLE IN -RK REPAIR KIT OPTION BAG #66955-201-9

**Form # H16      Date: 10/23/03      C.N. No. 91514      Rev.**