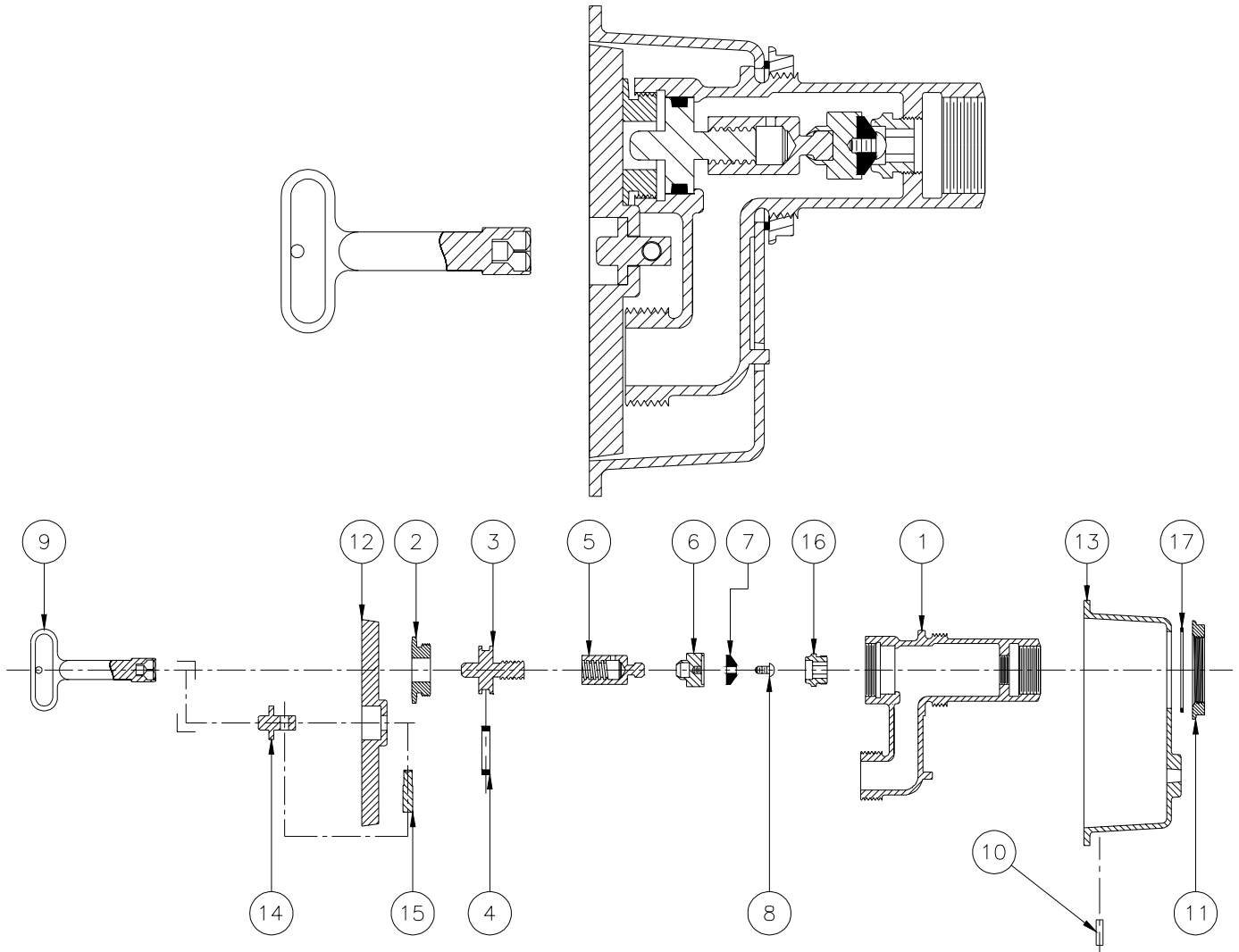




Z1335 WALL HYDRANT ASSEMBLY



LIST OF MATERIAL			
IT.	QTY	PART NO.	DESCRIPTION
1	1	25331-001	HEAD
2	1	22156-002	FACE NUT
* 3	1	25049-001	OPERATING SCREW
* 4	1	23750-028	O-RING
* 5	1	25330-001	OPERATING COUPLING
* 6	1	25050-001	WASHER GUIDE
* 7	1	23075-001	WASHER
* 8	1	14853-042	SCREW #10-24 N.C.
* 9	1	59546-001	HYDRANT KEY

LIST OF MATERIAL			
IT.	QTY	PART NO.	DESCRIPTION
10	2	45553-011	HINGE PIN
11	1	25242-001	LOCKNUT
12	1	26135-001	HYDRANT COVER
13	1	25301-001	HYDRANT BODY
14	1	25306-001	LOCKING PIN MOUNTING
15	1	25307-001	LOCKING PIN
* 16	1	25262-001	REMOVABLE SEAT
17	1	21425-060	GASKET

* ITEMS ARE AVAILABLE IN -RK REPAIR KIT OPTION BAG #66955-205-9.

Form # H25	Date: 11/13/03	C.N. No. 91650	Rev. A
-------------------	-----------------------	-----------------------	---------------