



# AQUASPEC<sup>®</sup> FAUCETS

MODEL - Z83600-XL SERIES

BUBBLER

## TECHNICAL INFORMATION

---

**FLOW:** 1.0 GPM @ 80 PSI ADJUSTABLE  
**MAXIMUM PRESSURE:** 125 PSI  
**MAXIMUM TEMPERATURE:** 180° F

---

**IMPORTANT** THE WATER SUPPLY LINES MUST BE THOROUGHLY FLUSHED BEFORE INSTALLATION TO PREVENT FOREIGN MATTER AND DEBRIS FROM CLOGGING AND/OR DAMAGING INTERNAL COMPONENTS AND THEREBY PREVENTING THE FAUCET FROM FUNCTIONING PROPERLY

---

**IMPORTANT** THE FAUCET HAS AN INTEGRAL SHANK FILTER ASSEMBLY INSTALLED IN THE BODY UNDER THE METERING CARTRIDGE TO PREVENT FOREIGN MATTER AND DEBRIS FROM DAMAGING THE FAUCET. THE INTEGRAL FILTER MAY BE REMOVED TO BE BACK-FLUSHED AND CLEANED IF INSUFFICIENT FLOW IS DETECTED. THE INTEGRAL SHANK FILTER ASSEMBLY MUST BE RE-INSTALLED AFTER SERVICING TO ENSURE PROPER FUNCTIONING OF THE METERING CARTRIDGE.

---

**⚠ WARNING:** Cancer and Reproductive Harm - [www.P65Warnings.ca.gov](http://www.P65Warnings.ca.gov)

**⚠ ADVERTENCIA:** Cáncer y daño reproductivo - [www.P65Warnings.ca.gov](http://www.P65Warnings.ca.gov)

**⚠ AVERTISSEMENT:** Cancer et effets néfastes sur la reproduction - [www.P65Warnings.ca.gov](http://www.P65Warnings.ca.gov)

---

## \* INSTALLATION INSTRUCTIONS

---

1. THE WATER SUPPLY LINE MUST BE THOROUGHLY FLUSHED BEFORE BUBBLER INSTALLATION.
2. REMOVE BUBBLER FROM CARTON AND PLACE GASKET (ITEM #8A) ON SHANK.
3. PLACE BUBBLER ON SINK, MOUNT LOCKWASHER (ITEM #8B) AND MOUNTING NUT (ITEM #9) ONTO SHANK FROM UNDER SINK.
4. HAND TIGHTEN MOUNTING NUT (ITEM #9). MAKE SURE BUBBLER IS CENTERED PROPERLY. DO NOT OVER TIGHTEN, YOU COULD DAMAGE THE FIXTURE.
5. ATTACH LAVATORY SUPPLY TO THE OUTLET OF BUBBLER WITH RISER NUT (ITEM #8C).
6. TURN WATER SUPPLY ON AND OPERATE THE BUBBLER WHILE CHECKING FOR LEAKS.

## MAINTENANCE

---

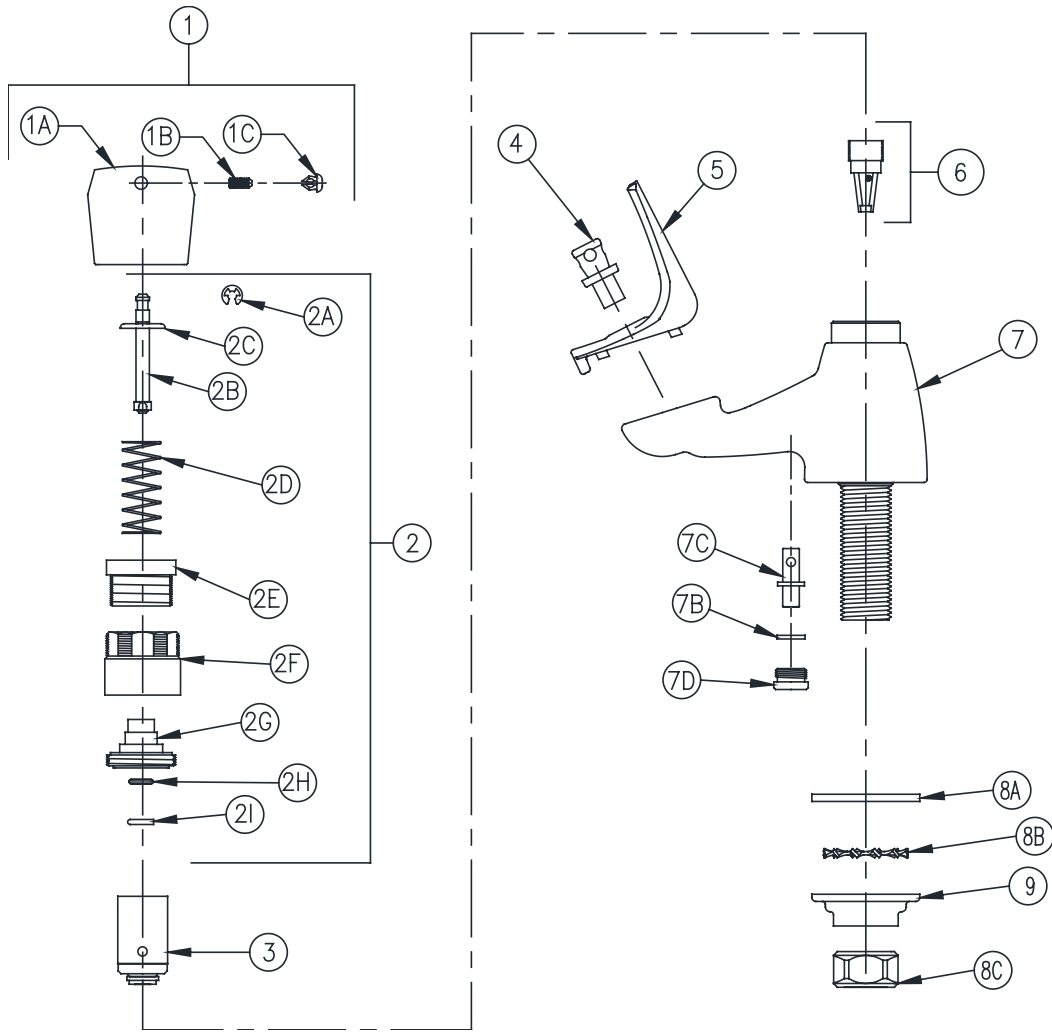
1. YOUR ZURN AQUASPEC BUBBLER HAS A HIGHLY POLISHED NICKEL CHROME PLATED FINISH. CLEAN WITH SOAP AND WATER OR A MILD CLEANER WHICH IS SAFE FOR CHROME PLATING. DO NOT USE ACIDS OR TOILET BOWL CLEANER AS THEY WILL DAMAGE THE FINISH.
2. METERING CARTRIDGE (ITEM #3) REMOVAL AND REPLACEMENT
  - 2.1. REMOVE COLORED INDEX BUTTON (ITEM #1C) FROM HANDLE (ITEM #1A)
  - 2.2. LOOSEN SET SCREW (ITEM #1B) IN HANDLE WITH 3/32" ALLEN WRENCH
  - 2.3. PULL UP ON HANDLE TO REMOVE FROM STEM (ITEM #2C) OF HANDLE NUT ASSEMBLY (ITEM #2)
  - 2.4. REMOVE HANDLE NUT ASSEMBLY (ITEM #2) USING 1-1/8" HEX 6-POINT SOCKET
  - 2.5. REMOVE METERING CARTRIDGE (ITEM #3) BY LIFTING OUT OF BUBBLER BODY (ITEM #7A). IT MAY BE NECESSARY TO OPEN THE SUPPLY STOP SLIGHTLY TO ALLOW WATER PRESSURE TO PUSH THE METERING CARTRIDGE UPWARD.
  - 2.6. INSPECT METERING CARTRIDGE (ITEM #3) FOR WORN PARTS, DAMAGED PARTS AND ANY CONTAMINATION THAT MAY BE PREVENTING THE METERING CARTRIDGE FROM MOVING FREELY OR SEATING. OTHER THAN CLEANING ANY TRAPPED DEBRIS, **THERE ARE NO SERVICEABLE PARTS IN THE METERING CARTRIDGE.** CONTAMINATED OR DAMAGED METERING CARTRIDGES SHOULD BE REPLACED.

- 2.7 REVERSE STEPS 1.1 THROUGH 1.5 FOR RE-ASSEMBLY. METERING CARTRIDGE (ITEM #3) WILL SIT SLIGHTLY ABOVE BODY (ITEM #7A) PRIOR TO MOUNTING OF HANDLE NUT ASSEMBLY. TIGHTEN CAP (ITEM #2F) WITH 1-1/8" HEX 6-POINT SOCKET UNTIL NO WATER IS LEAKING FROM UNDER THE HANDLE NUT ASSEMBLY WHEN THE BUBBLER IS RUNNING. HOLD DOWN HANDLE (ITEM #1) WHILE TIGHTENING SET SCREW (ITEM #1B) TO ENSURE PROPER SEATING
3. IT MAY BE NECESSARY TO REPLACE OR BACK FLUSH THE IN-LINE SHANK FILTER PERIODICALLY TO REMOVE COLLECTED SEDIMENT AND DEBRIS. THE IN-LINE SHANK FILTER (ITEM #6) MAY BE REMOVED USING A 1/4" ALLEN WRENCH.

**METERING FAUCET TROUBLE SHOOTING GUIDE**

<b><u>PROBLEM</u></b>	<b><u>CAUSE</u></b>	<b><u>SOLUTION</u></b>
No water is coming out bubbler & all supply stops are on.	Clogged filter assembly.	Shut off water. Remove filter assembly (#6) from lavatory supply stop and rinse debris from filter. Replace filter assembly and turn on water to bubbler.
Bubbler will not shut off.	Cartridge is damaged.	Replace metering cartridge G62682

# Z83600-XL PICTURED



Item	Part Number	Description	Qty.	Item	Part Number	Description	Qty.
1	G60522	Metering Handle Assembly	1	2I	60458-001	O-Ring Retainer	1
1A	60601003	Metering Handle	1	3	G62682	Metering Cartridge Assembly	1
1B	62705001	Set Screw	1	4	92332003	Bubbler Adapter XL	1
1C	G60558	MeteringIndexButtons H,C,T	1	5	92209001	Flexible Mouth Guard	1
	60460001	Hot Index	1	6	G68020	Filter Assembly	1
	60460002	Cold Index	1	7	G67880	Body Assembly XL	1
	60460003	Tempered Index	1	7A	61697-003	Body XL	1
2	G60561	Handle Nut Assembly	1	7B	62916001	Gasket	1
2A	60465-001	E-Ring	1	7C	92333002	Flow Control XL	1
2B	60451-003	Stem	1	7D	62915001	Retaining Ring	1
2C	60450-001	Spring Seat	1	8	G68037	Mounting Hardware	1
2D	60447-001	Spring	1	8A	60549001	Gasket	1
2E	60446-001	Adjustment Nut	1	8B	61613019	Lock Washer	1
2F	60452-001	Cap	1	8C	59532001	1/2" NPSM Riser Nut	1
2G	60456-001	Stem Housing	1	9	59530002	Mounting Nut	1
2H	58155-107	O-Ring	1				

Rev. F | Date: 11/23/22 | C.N. No. 144877 | Prod./Dwg. No. CF1205

Patent [zurn.com/patents](http://zurn.com/patents)

US 1.855.ONE.ZURN CANADA 1.877.892.5216

[ZURN.COM](http://ZURN.COM)

by **ZURN ELKAY** Water Solutions