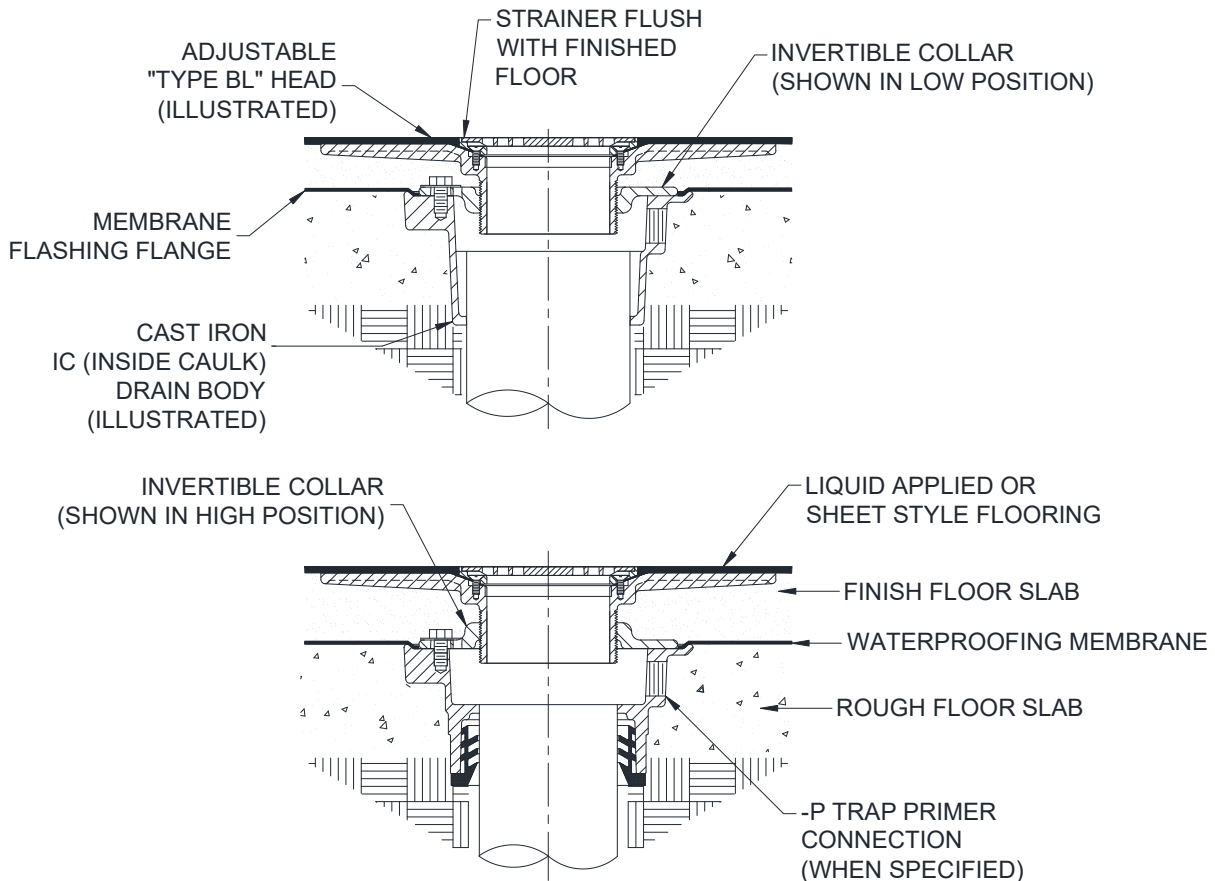




# TYPICAL INSTALLATION FOR Z415BL FLOOR DRAIN

Dimensional Data (inches and [mm]) are Subject to Manufacturing Tolerances and Change Without Notice



## Z415BL FLOOR DRAIN

The Z415BL Zurn Floor Drain is typically used in applications where both a subsurface waterproofing membrane and liquid applied or sheet type flooring are used. The drain pipe is run to an elevation below the expected finished floor level, so that the drain top will be flush with (or slightly below) the finished floor. Dimensional data for all drain heights and outlet types are shown in the Engineering Handbook, and on Zurn Submittal Drawings. The drain body is secured to the pipe with any of four connections, Threaded, No-Hub, Inside Caulk or the Neo-Loc. The type of connection should be specified upon ordering any Zurn drain. Once the drain is set in place, the initial concrete sub-floor is poured to an elevation level with the top flange of the drain body. The waterproofing membrane is then run up to and over the flange. The invertible clamping collar is then placed on the drain and secured. The strainer is then screwed into the invertible clamping collar and finished floor is poured to finished grade. Note the Z415 collar can be used in the high or low position to change the total adjustment of the head elevation (for example, the 5" "Type BL" adjustment in the low position is 7/8 [22] - 2-1/4 [57] and in the high position 1-11/16 [43] - 3 [76]). Finally, the top frame should be removed while the liquid applied or sheet style flooring is installed. Then the frame can be placed on top of the flooring and secured to the drain with the provided screws. Also, care should be taken to protect the top finish during installation, through the use of Zurn's labor saving Protective Cover (-PC) option.

⚠ **WARNING:** Cancer and Reproductive Harm - [www.P65Warnings.ca.gov](http://www.P65Warnings.ca.gov)

⚠ **ADVERTENCIA:** Cáncer y daño reproductivo - [www.P65Warnings.ca.gov](http://www.P65Warnings.ca.gov)

⚠ **AVERTISSEMENT:** Cancer et effets néfastes sur la reproduction - [www.P65Warnings.ca.gov](http://www.P65Warnings.ca.gov)

Zurn Industries, LLC | Specification Drainage Operation  
1801 Pittsburgh Avenue, Erie, PA U.S.A. 16502 · Ph. 855-663-9876, Fax 814-454-7929  
In Canada | Zurn Industries Limited  
3544 Nashua Drive, Mississauga, Ontario L4V 1L2 · Ph. 905-405-8272, Fax 905-405-1292  
[www.zurn.com](http://www.zurn.com)

Rev. A  
Date: 04/06/2018  
C.N. No. 139849  
Form No. FD94