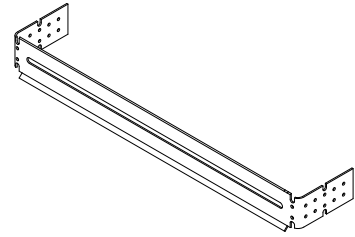




Z1327-EZ INSTALLATION INSTRUCTIONS (16 [406] ON CENTERS) NARROW WALL HYDRANT WITH MOUNTING BRACKETS

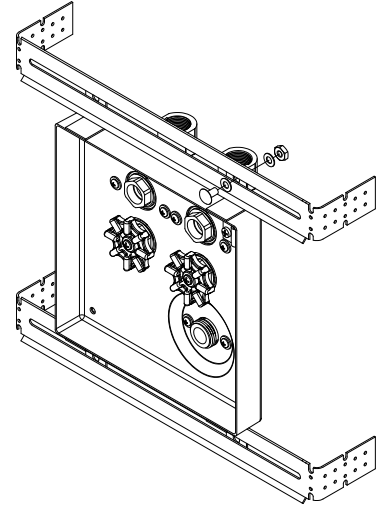
Mounting Bracket Bending

Step 1: With the angled stiffeners facing away from you, bend the fastening tabs on both ends of the bracket towards you at the last bending guide on both brackets.



Attaching the Hydrant Box

- Step 2: Install a supplied 1/4" nominal washer onto a 1/4-20 pan head machine screw and insert screw through slot of mounting bracket, with the bent fastening tabs of the bracket facing away.
- Step 3: Insert screw through hole of mounting tab on hydrant box and install second washer and 1/4-20 jam nut to secure.
- Step 4: Repeat step 2 and 3 with remaining three mounting tab holes.
- Step 5: Once both mounting brackets are assembled to the hydrant box and aligned with each other, tighten all jam nuts to ensure the brackets are rigidly secure.



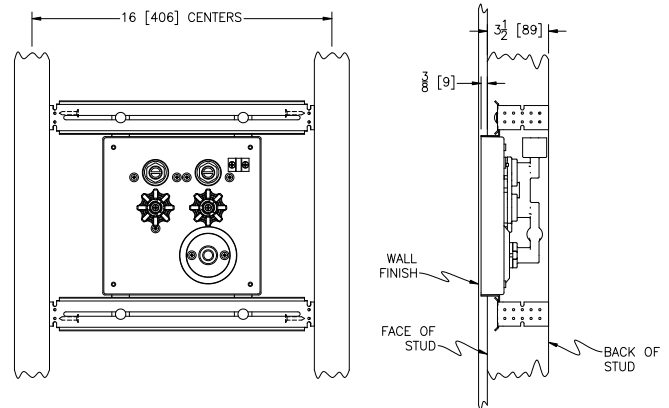
Attaching the Hydrant Box and Brackets to Studs

Step 6: Position the hydrant assembly in between two studs and align the front of the bracket flush with the front of the stud. Use caution to prevent the bracket from protruding beyond the front face of the stud and the hydrant body from protruding beyond the back face of the stud.

Note: The hydrant box will extend out beyond the front face of the stud approximately 1/2 [16]. This space will be filled when wall finish is applied.

Step 7: Ensure that the hydrant box is level and plum.

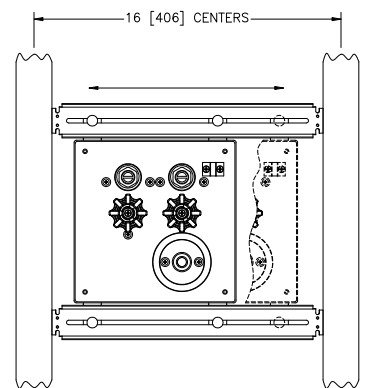
Step 8: Install two screws (supplied by others) into each of the fastening tabs on the inside of the stud.



Positioning the Hydrant Box

Step 9: Once the brackets are secured to the studs, loosen the four jam nuts and slide the hydrant box left or right to a desired position.

Step 10: Tighten the four jam nuts once the hydrant box is positioned.



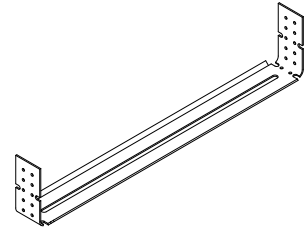
- ⚠ **WARNING:** Cancer and Reproductive Harm - www.P65Warnings.ca.gov
⚠ **ADVERTENCIA:** Cáncer y daño reproductivo - www.P65Warnings.ca.gov
⚠ **AVERTISSEMENT:** Cancer et effets néfastes sur la reproduction - www.P65Warnings.ca.gov



Z1327-EZ INSTALLATION INSTRUCTIONS (16 [406] ON CENTERS) NARROW WALL HYDRANT WITH MOUNTING BRACKETS

Mounting Bracket Bending

Step 1: With the angled stiffeners facing you, bend the fastening tabs on both ends of the bracket towards you at the last bending guide on both brackets.



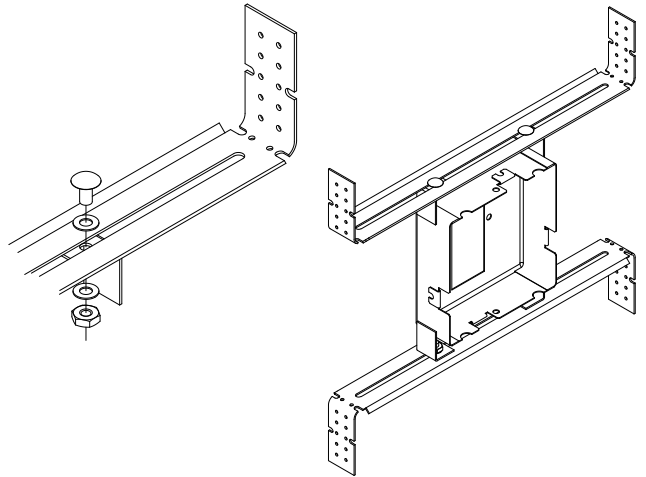
Attaching the Hydrant Box

Step 2: Install a supplied 1/4" nominal washer onto a 1/4-20 pan head machine screw and insert screw through slot of mounting bracket, with the bent fastening tabs of the bracket facing away.

Step 3: Insert screw through hole of mounting tab on hydrant box and install second washer and 1/4-20 jam nut to secure.

Step 4: Repeat step 2 and 3 with remaining three mounting tab holes.

Step 5: Once both mounting brackets are assembled to the hydrant box and aligned with each other, tighten all jam nuts to ensure the brackets are rigidly secure.



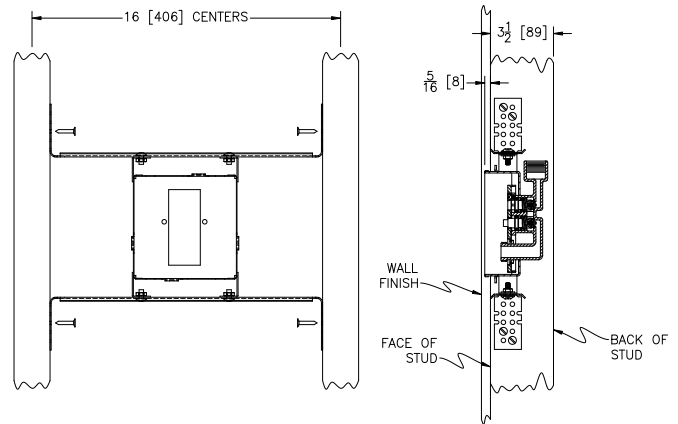
Attaching the Hydrant Box and Brackets to Studs

Step 6: Position the hydrant assembly in between two studs and align the front of the bracket flush with the front of the stud. Use caution to prevent the bracket from protruding beyond the front face of the stud and the hydrant body from protruding beyond the back face of the stud.

Note: The hydrant box will extend out beyond the front face of the stud approximately 5/16 [8]. This space will be filled when wall finish is applied.

Step 7: Ensure that the hydrant box is level and plumb.

Step 8: Install two screws (supplied by others) into each of the fastening tabs on the inside of the stud.



Positioning the Hydrant Box

Step 9: Once the brackets are secured to the studs, loosen the four jam nuts and slide the hydrant box left or right to a desired position.

Step 10: Tighten the four jam nuts once the hydrant box is positioned.

