

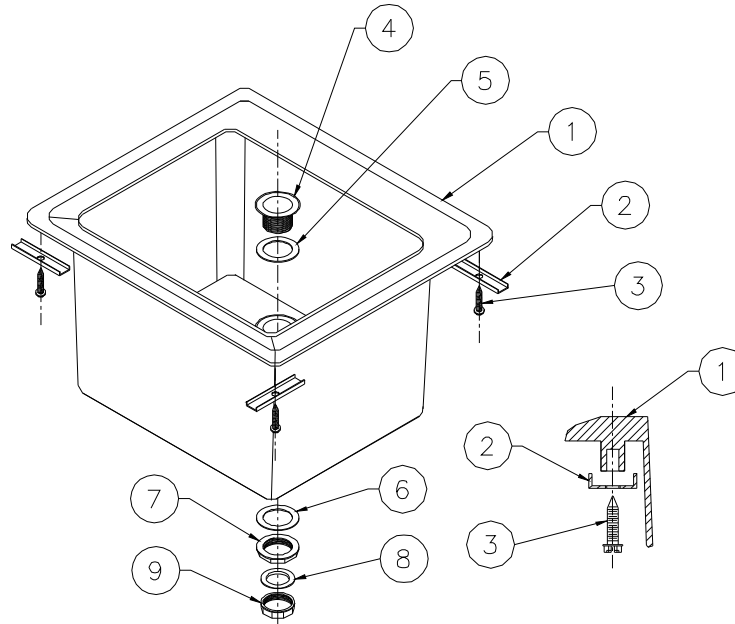


MS2624

PARTS ILLUSTRATION & INSTALLATION INSTRUCTIONS

Dimensional data (inches and [mm]) are subject to manufacturing tolerances and change without notice.

ASSEMBLY OF PARTS ILLUSTRATION



STUD INSTALLATION

PARTS LIST			
KEY NO.	PART NO.	DESCRIPTION	
1	66805-001	SELF RIMMING DROP-IN SINK	
2	60342-002	LOCK DOWN BAR (4 Required)	
3	64177-001	#12 x 1" HEX HEAD SHEET METAL SCREW (4 Required)	
4	67042-001	DRAIN BODY (Molded)	
5	67039-001	GASKET	
6	67040-001	CORK GASKET	
7	67041-001	LOCKING NUT FOR DRAIN BODY	
8	67038-001	PIPE SEAL	
9	67037-001	LOCKING NUT FOR PIPE	

CARE AND CLEANING

The surface of the Counter Top Drop-In Sink may be cleaned with a mild detergent soap solution in warm water using a soft material cloth. For strong stains, a stronger soap or powder detergent may be used. Never use an abrasive powder, steel wool pad, or similar types of materials. This will diminish the surface of the sink. On a periodic basis, apply a coat of a quality silicone base marine polish to maintain the fine finish of the product.

⚠️ WARNING: Cancer and Reproductive Harm - www.P65Warnings.ca.gov

⚠️ ADVERTENCIA: Cáncer y daño reproductivo - www.P65Warnings.ca.gov

⚠️ AVERTISSEMENT: Cancer et effets néfastes sur la reproduction - www.P65Warnings.ca.gov

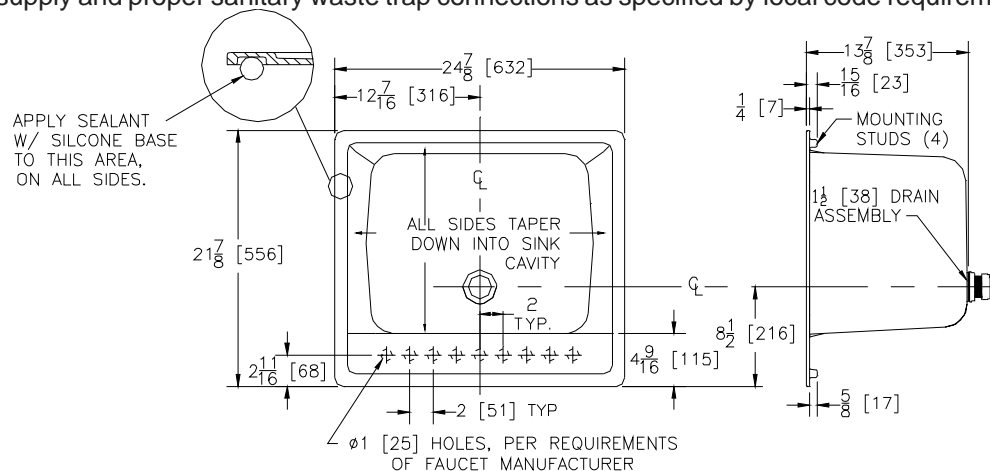


MS2624

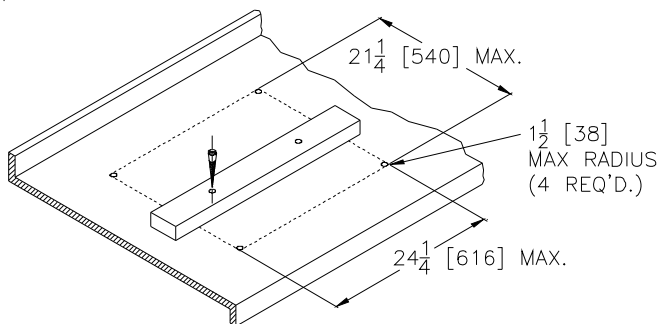
PARTS ILLUSTRATION & INSTALLATION INSTRUCTIONS

Dimensional data (inches and [mm]) are subject to manufacturing tolerances and change without notice.

1. Determine the location of drop-in sink. The drop-in sink is designed to be installed into a typical 21 x 24 [533 x 610] counter top cutout. See "CUTOUT DIMENSIONS". Lay out dimensions into desired location on counter top. Drill a 1-1/2 [38] max. radius access hole for saber saw blade. Cut inside lines - **CAUTION - DO NOT EXCEED MAXIMUM DIMENSIONS OF CUTOUT.** Test fit drop-in sink into opening to ensure proper fit.
2. The rear ledge of the drop-in sink is designed to accommodate many different styles of faucets as well as a hose spray and soap dispenser. Depending on the model of faucet that you purchase, you will have to drill out the appropriate holes. Notice that there are seven indented hole locators molded-in on the underside of the rear ledge. Do not drill faucet holes until they have been properly measured with the actual faucet. A 1 [25] diameter, fine tooth hole saw with center drill pilot will normally be used for the majority of faucet hole drilling. Drill from underside of rear ledge to mark center, then turn upright to finish cutting with hole saw. Install faucet at this time.
3. Assemble drain of drop-in sink using all washers provided. (see DRAIN ASSEMBLY illustration) -**CAUTION - DO NOT USE ANY PUTTY OR THREAD SEALANT ON DRAIN BODY OR LOCKNUT.** Teflon type sealing tape is permitted.
4. Apply a bead of Siliconized Sealant all around, approximately 3/8 diameter to the underside of rim- See illustration. Set drop-in sink into desired position and secure on underside with lock down bar and sheet metal screw. **CAUTION - DO NOT OVERTIGHTEN LOCK DOWN BAR OR SHEET METAL SCREW.** Wipe off excess sealant from edge of rim with damp cloth.
5. Complete water supply and proper sanitary waste trap connections as specified by local code requirements in your area.

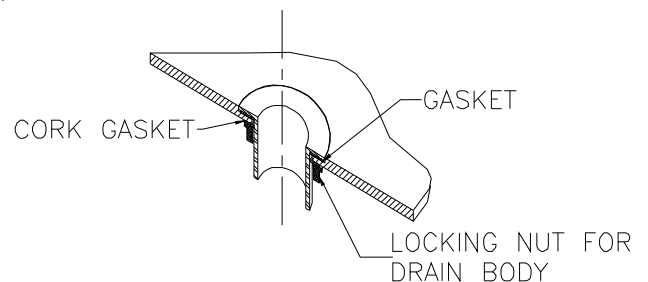


STANDARD 21 x 24 [533 x 610] COUNTER TOP CUTOUT DIMENSIONS



WHEN FINISHED MAKING (2) CUTS ALONG PARALLEL SIDES OF CUTOUT, SECURE A PIECE OF LUMBER TO PREVENT CUTOUT FROM POSSIBLY DAMAGING COUNTER TOP OR DROPPING.

DRAIN ASSEMBLY



CAUTION - DO NOT USE ANY PUTTY OR THREAD SEALANT!