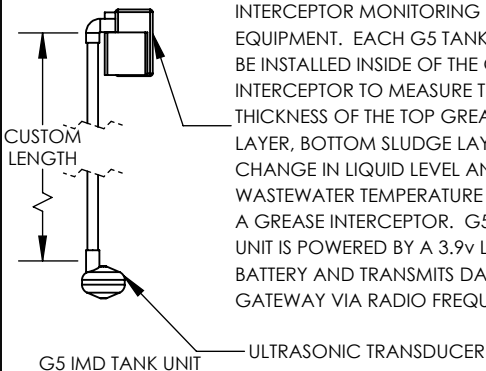


**G5 IMD TANK UNIT**

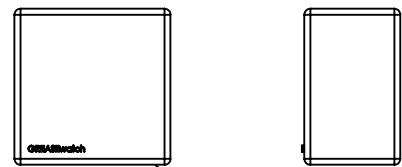
G5 GREASEwatch® TANK UNIT INTERCEPTOR MONITORING EQUIPMENT. EACH G5 TANK UNIT TO BE INSTALLED INSIDE OF THE GREASE INTERCEPTOR TO MEASURE THE THICKNESS OF THE TOP GREASE LAYER, BOTTOM SLUDGE LAYER, CHANGE IN LIQUID LEVEL AND WASTEWATER TEMPERATURE INSIDE OF A GREASE INTERCEPTOR. G5 TANK UNIT IS POWERED BY A 3.9v LITHIUM BATTERY AND TRANSMITS DATA TO G5 GATEWAY VIA RADIO FREQUENCY.



EXTERIOR WALL

G5 IMD GATEWAY INSTALLED WITHIN RADIO SIGNAL RANGE OF THE IMD TANK UNIT(S)

G5 IMD ALARM PANEL INSTALLED WITHIN RADIO SIGNAL RANGE OF THE IMD GATEWAY



G5 IMD GATEWAY — 120v PLUG

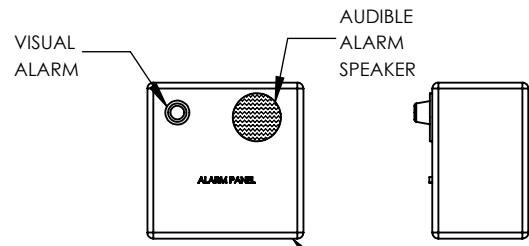
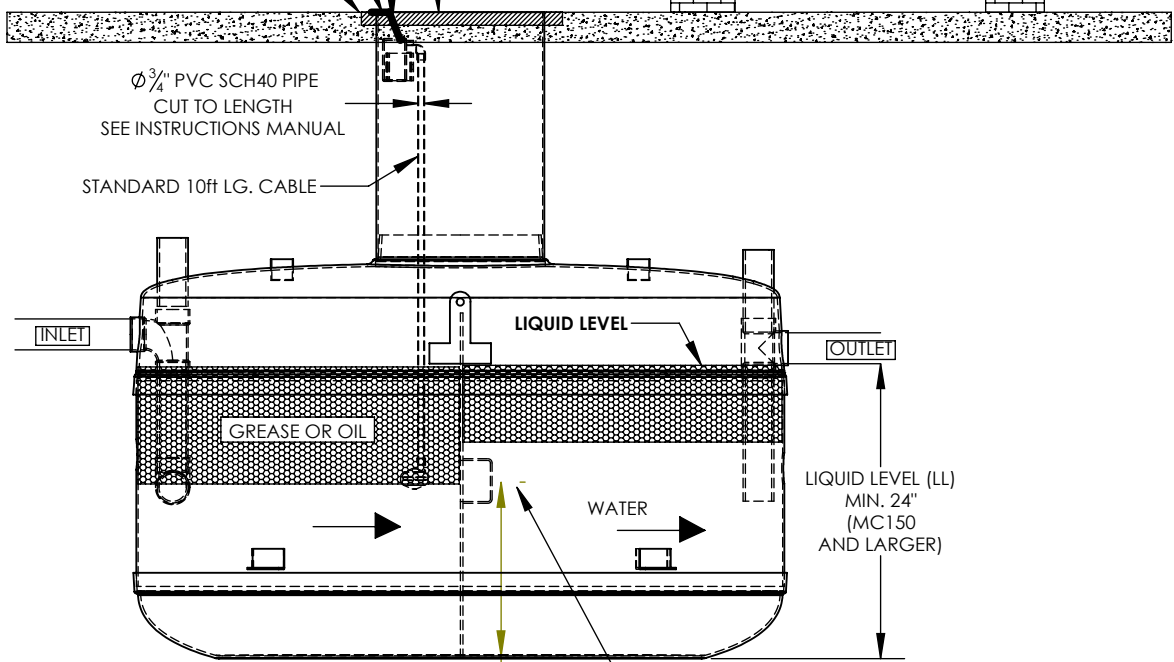
**G5 IMD GATEWAY**

THE G5 GREASEwatch® IMD GATEWAY IS TO BE INSTALLED INSIDE OR OUTSIDE OF BUILDING WITHIN RADIO SIGNAL RANGE (APPROX. 300ft LINE OF SIGHT) OF THE GREASEwatch IMD TANK UNIT(S) WHEN NEEDED. THE G5 GATEWAY RECEIVES DATA FROM THE G5 TANK UNIT(S) VIA RADIO FREQUENCY AND THEN FORWARDS DATA TO ATS WEBSITE FOR SIGNAL AND ALARM PROCESSING FOR A YEARLY FEE. G5 GATEWAY RECEIVER IS POWERED BY 120v POWER SUPPLY (PLUG) AND TRANSMITS DATA TO WEBSITE VIA CELLULAR TELEMETRY. THIS AVOIDS NUISANCE CALLS AND IS A NATURAL THEFT DETERRANT.

STANDARD 8ft LG. CABLE  
SMARTPRO WIRELESS ANTENNA INSTALLED AS PER OWNER'S MANUAL  
FINISHED FLOOR

Ø 3/4" PVC SCH40 PIPE CUT TO LENGTH SEE INSTRUCTIONS MANUAL

STANDARD 10ft LG. CABLE



G5 IMD ALARM PANEL — 120v PLUG

**G5 IMD ALARM PANEL**

G5 IMD AUDIBLE & VISUAL ALARM PANEL IS TO BE INSTALLED WITHIN RADIO SIGNAL RANGE (APPROX. 300ft LINE OF SIGHT) OF G5 IMD GATEWAY. G5 ALARM PANEL IS POWERED BY 120v POWER SUPPLY (PLUG). WHEN TANK UNITS ARE CLOSE TO ALARM PANEL, A COMBINATION GATEWAY AND ALARM PANEL BOX WILL BE USED.

1. TANKS INSTALLED IN SERIES (EX. GMC 2000(2)) WILL HAVE ALARM INSTALLED IN THE FIRST TANK OUTLET SIDE
2. SINGLE TANKS (WITH BAFFLE) WILL HAVE ALARM INSTALLED ON THE INLET SIDE (BOTH INLET AND OUTLET INSTALLATION IS ALLOWED BUT GT RECOMMENDS INLET)

ALARM IS SHOWN TO BE INSTALLED ON INLET SIDE OF TANK

**SKU 4670**

**INTERNAL PART #G5-4651**

DWG. TITLE:  
SMARTPRO G5 GATEWAY WITH SEPARATE MONITOR AND SEPARATE ALARM INLET SIDE INSTALLATION

PROJECT:

SIZE A DRAWING NOT TO SCALE



DWG #: 21-5531-S REV. 0