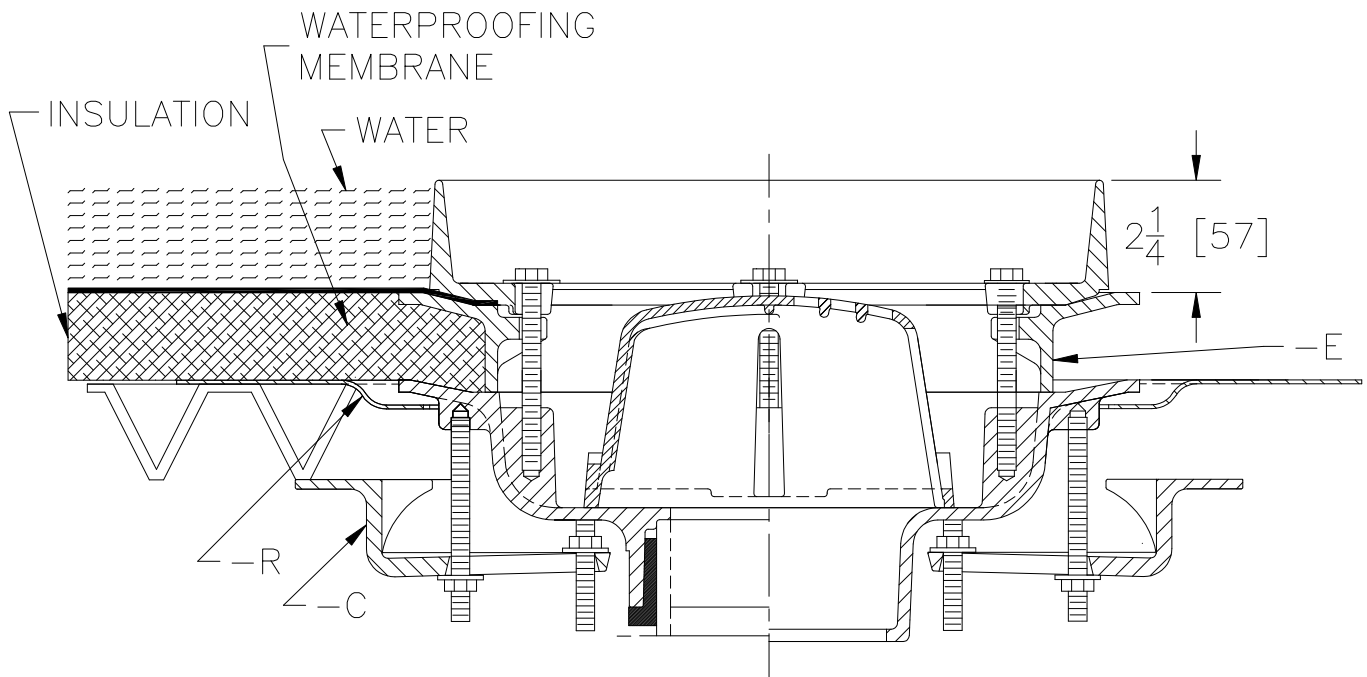




TYPICAL INSTALLATION FOR Z108-C-E-R-89 RECEPTOR DRAIN

Dimensional Data (inches and [mm]) are Subject to Manufacturing Tolerances and Change Without Notice



Z108-C-E-R-89 RECEPTOR DRAIN

Drain installed in a steel deck. Drain is illustrated with underdeck clamp (-C), static extension (-E), roof sump receiver(-R), and a 2 [51] high external water dam (-89), open sump and a small bottom dome strainer. Specify where overflow or indirect waste application is required.

⚠ WARNING: Cancer and Reproductive Harm - www.P65Warnings.ca.gov

⚠ ADVERTENCIA: Cáncer y daño reproductivo - www.P65Warnings.ca.gov

⚠ AVERTISSEMENT: Cancer et effets néfastes sur la reproduction - www.P65Warnings.ca.gov