



# Z5535-K

EcoVantage® High Efficiency, 1.28 GPF, STD Height, Elongated, Siphon Jet Toilet

TAG \_\_\_\_\_

## Architectural/Engineering Specification:

Vitreous china, high efficiency, 1.28 gpf low consumption, high performance siphon-jet toilet with 3" flush valve, elongated front rim and 12" standard rough-in.

## Product Features:

- 1.28 gpf (gallons per flush)
- High efficiency toilets (HET) reduces potable water usage over 20%
- Vitreous china
- 3" Flush valve for powerful flushing
- Chrome plated metal handle
- Elongated front rim
- EcoVantage® siphon-jet design
- Extra large foot print for easy retro-fit
- 2 1/8" Fully glazed trapway
- Chloramine resistant internal components
- Maximum performance (MaP) score of 1000g
- Concealed sanitary bar
- 2 1/2" Trap seal
- 10" x 8" water surface
- Includes bolt caps
- Shipping weight: 89 lbs.



## Options:

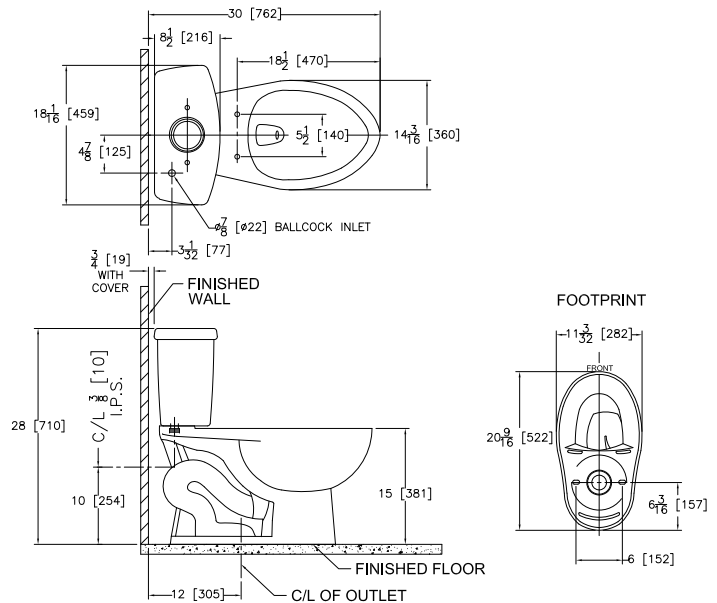
- IN Insulated tank
- RH Vitreous China right-hand lever tank

## Recommended Trim:

- Z5958SS-EL  
Elongated, white, closed front toilet seat with cover & stainless steel check hinge.
- Z5972-COMB  
Closet bolt/wax ring kit.
- Z8800-CR  
Standard stop with flexible closet riser.

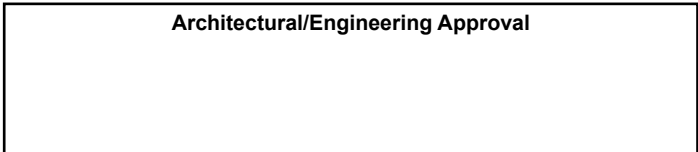
## Optional Trim:

- Z5975-FLO-JR PVC Flo-Bowl Jr. closet flange kit



Rough-in/Overview dimensions for Z5555 Series

See Zurn One Systems for suggested packages.



## Compliance and Certification:

- WaterSense Compliant



This product should be used with a WaterSense labeled counterpart with a compatible flush volume to ensure that the entire system meets the requirements for water efficiency and performance.

Fixture dimensions meet ASME A112.19.2/CSA B45.1 requirements. In Canada - Consult local codes and standards.