

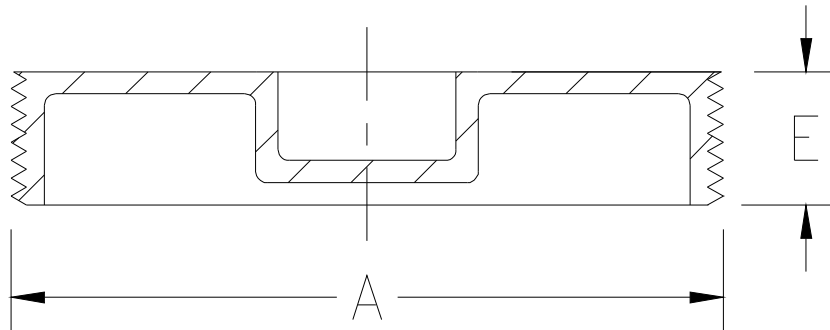


Z1470 BRONZE CLEANOUT PLUG

SPECIFICATION SHEET

TAG _____

Dimensional Data (inches and [mm]) are Subject to Manufacturing Tolerances and Change Without Notice



Product Designation	Dimensions In Inches		Approx. Wt. Lbs. [kg]
	A-Pipe Size	E	
-1.25	1-1/4 [32]	9/16 [14]	1/2 [.2]
-1.5	1-1/2 [38]	5/8 [16]	
-2	2 [51]	1/2 [13]	3/4 [.3]
-2.5	2-1/2 [64]	3/4 [19]	
-3	3 [76]		1 [.5]
-3.5	3-1/2 [89]		
-4	4 [102]		1 1/2 [.7]
-5	5 [127]		
-6	6 [152]		3 [1.4]
-8	8 [203]		7 [3]

ENGINEERING SPECIFICATION: ZURNZARB1470
Countersunk, bronze cleanout plug.

OPTIONS (Check/specify appropriate options)

PREFIXES

____ ZARB Plain Bronze*

SUFFIXES

____ -A Raised Head
____ -PW Plug Wrench

REV. D DATE: 11/8/10 C.N. NO. 120269

DWG. NO. 58783 PRODUCT NO. Z1470

*REGULARLY FURNISHED UNLESS OTHERWISE SPECIFIED