



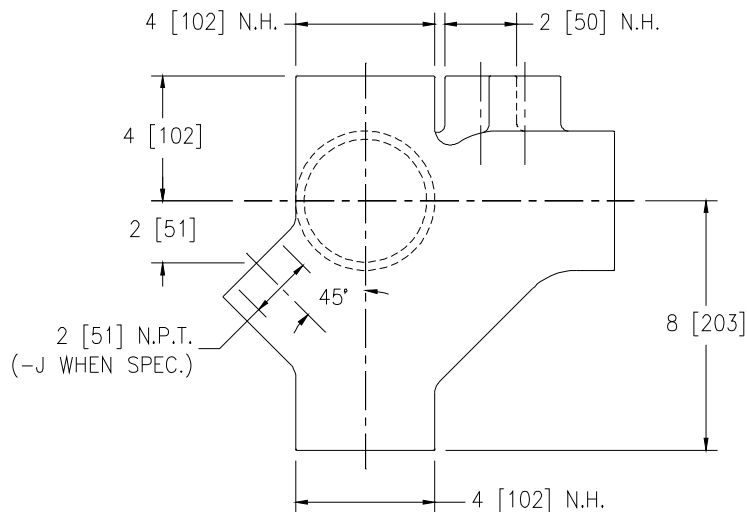
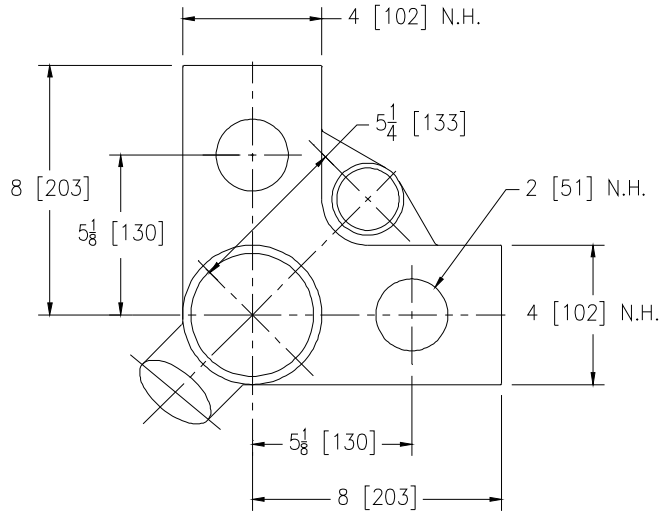
Z1216

90° DOUBLE NO-HUB SYSTEM FOR FLOOR MOUNTED BACK OUTLET WATER CLOSETS

SPECIFICATION SHEET

TAG _____

Dimensional Data (inches and [mm]) are Subject to Manufacturing Tolerances and Change Without Notice



| Product Number | Approx. Wt. Lbs. [kg] |
|----------------|-----------------------|
| Z1216 | 31 [14] |

ENGINEERING SPECIFICATIONS: ZURN Z1216
 Dura-Coated cast iron 90° double No-Hub fitting with anti-crossover baffles and 2" [51mm] No-Hub center vent for floor mounted back outlet water closets.

OPTIONS (Check/specify appropriate options)

PREFIXES

___ Z D.C.C.I. No-Hub System*

SUFFIXES

___ -J 45° Auxiliary Inlet

* Regularly furnished unless otherwise specified.