



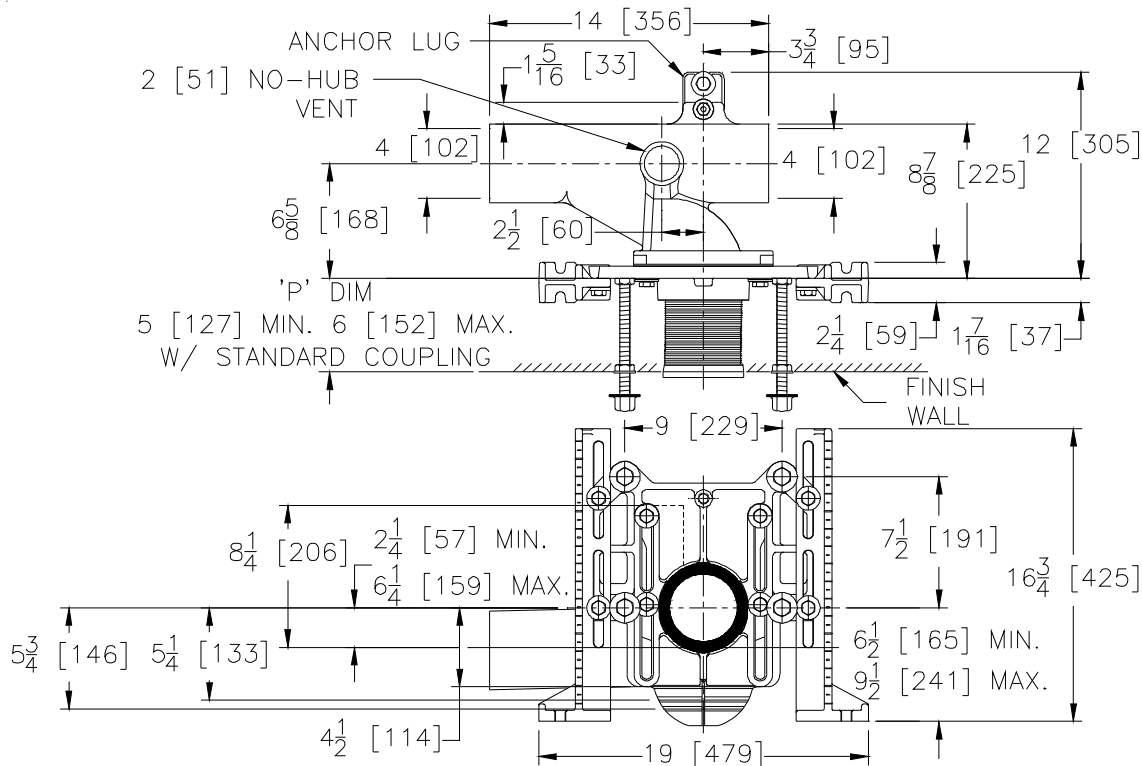
Z1207-N

ADJUSTABLE HORIZONTAL HIGH ROUGH-IN SIPHON JET - NO-HUB

SPECIFICATION SHEET

TAG _____

Dimensional Data (inches and [mm]) are Subject to Manufacturing Tolerances and Change Without Notice



Product Numbers	Approx Wt. Lbs [kg]
Z1207-NL4	87 [39]
Z1207-NR4	

ENGINEERING SPECIFICATION: ZURN Z1207-N()

Adjustable, horizontal, high rough-in siphon jet water closet "Rigid System" with 4" [102mm] No-Hub connections. Complete with Dura-Coated cast iron right hand or left hand main fitting, with 2" [51mm] vent, adjustable gasketed face plate, universal floor mounted foot supports, corrosion resistant adjustable ABS coupling with integral test cap, fixture bolts, trim, stud protectors, rear anchor tie down and bonded "Neo-Seal" gasket.

Note: 13 1/2 [343] Minimum space required between front of foot and rear of anchor to install Z1207-N4 Series.

OPTIONS (Check/specify appropriate options)

_____ Z1207-NR4	4 [102] No-Hub Right Hand Inlet with Flow to Left
_____ Z1207-NL4	4 [102] No-Hub Left Hand Inlet with Flow to Right

PREFIXES

_____ Z	D.C.C.I. System with Zurn "ZZ" Adjustable Coupling*
_____ ZQ	D.C.C.I. System with NPT Face Plate, Non-Adjustable Coupling

SUFFIXES

_____ -A	Auxiliary Support Assembly (For P-Dim. Greater than 18 [457])	_____ -X3	3 [76] Foot Extension Assembly (See Z1200-FT-EXT-3)
_____ -B	Blowout Type Fixture Support	_____ -X4	4 [102] Foot Extension Assembly (See Z1200-FT-EXT-4)
_____ -CC	Corrosion Resistant Cast Iron Coupling (6 - 12 [152 - 305])	_____ -45	Finishing Frame for Siphon Jet System (See Z1200-FINFRAME-SJ)
_____ -CL	Coupling Length Other Than Standard 6 [152] (Specify Length Required)	_____ -50	Flush Valve Supply Support for W.C. (See Z1200-SPLY-SPRT-WC)
_____ -F	Floor Mounted Back Outlet Fixture Support	_____ -61	"ZZ" Coupling Wrench
_____ -M	Auxiliary Foot Support (For P-Dim. 10 - 18 [254 - 457])		
_____ -VP	Vandal-Proof Trim		

* Regularly furnished unless otherwise specified.