



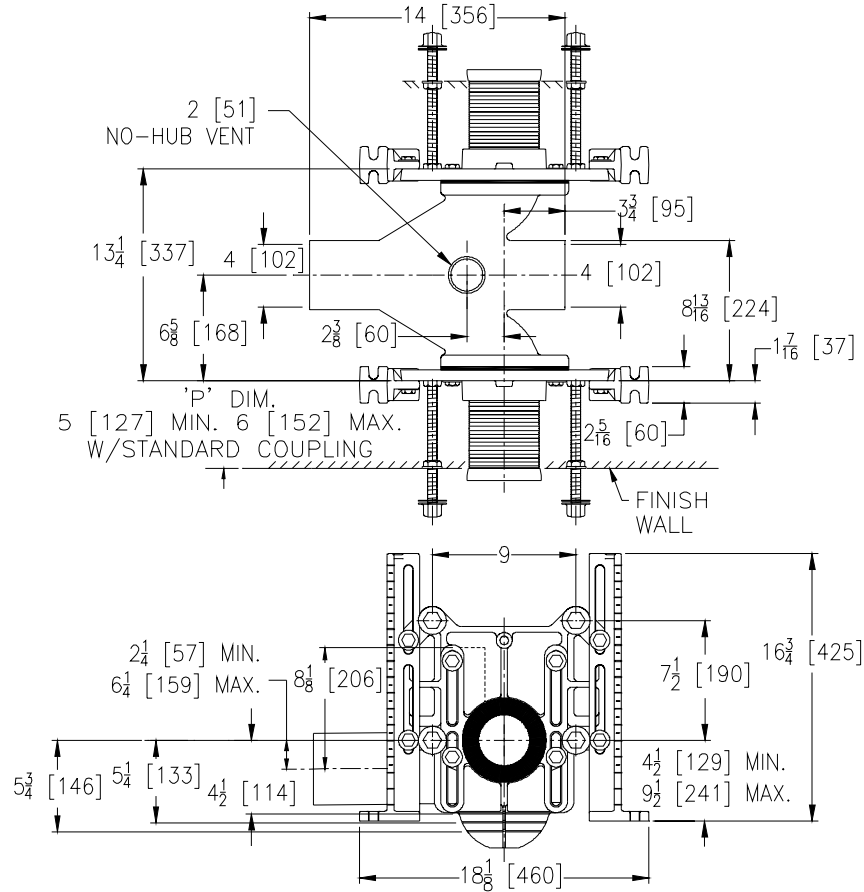
Z1207-ND4

ADJUSTABLE HORIZONTAL HIGH ROUGH-IN BACK TO BACK SIPHON JET - NO-HUB

SPECIFICATION SHEET

TAG _____

Dimensional Data (inches and [mm]) are Subject to Manufacturing Tolerances and Change Without Notice



Product Number	Approx Wt. Lbs [kg]
Z1207-ND4	115 [51]

ENGINEERING SPECIFICATION: ZURN Z1207-ND4

Adjustable, horizontal, high rough-in siphon jet water closet "Rigid System" with 4 [102] No-Hub or Hub and Spigot connections. Complete with Dura-Coated cast iron double main fitting, with 2 [51] vent, adjustable gasketed face plate, universal floor mounted foot supports, corrosion resistant adjustable ABS coupling with integral test cap, fixture bolts, trim, and stud protectors. Rear anchor tie down and bonded "Neo-Seal" gasket.

OPTIONS (Check/specify appropriate options)

Z1207-ND4 4 [102] No-Hub Back to Back Inlet (Double)

PREFIXES

- ___ Z D.C.C.I. System with Zurn "ZZ" Adjustable Coupling*
- ___ ZQ D.C.C.I. System with NPT Face Plate, Non-Adjustable Coupling

SUFFIXES

- ___ -A Auxiliary Support Assembly
(For 'P' Dim. Greater than 18 [457])
- ___ -B Blowout Type Fixture Support
- ___ -CC Corrosion Resistant Cast Iron Coupling
(6 - 12 [152 - 305])
- ___ -CL Coupling Length Greater than 12 [305]
(Specify Length Required)
- ___ -F Floor Mount, Back Outlet Fixture Support
- ___ -G Galvanized Cast Iron
- ___ -M Auxiliary Foot Support
(For P-Dim. 10-18 [254-457])
- ___ -VP Vandal-Proof Trim
- ___ -X Heavy Duty 500 lb. [227 kg] Carrier
- ___ -XI 2 [51] Integral Extension Foot
- ___ -X3 3 [76] Foot Extension Assembly
- ___ -X4 4 [102] Foot Extension Assembly
- ___ -29 Mechanical Test Cap Assembly (Previously Z1210-29)
- ___ -45 Finishing Frame (For Blowout System Specify -45-B)
(Previously Z1210-45)
- ___ -50 Flush Valve Supply Support for Water Closets
(Previously Z1210-50)
- ___ -61 "ZZ" Coupling Wrench

*REGULARLY FURNISHED UNLESS OTHERWISE SPECIFIED

REV. B	DATE: 06/21/07	C.N. NO. 96730
DWG. NO. 60906	PRODUCT NO. Z1207-ND4	