



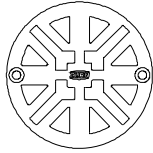
Z420

DEEP SHANK FLOOR & SHOWER DRAIN FOR MARBLE & GRANITE APPLICATIONS

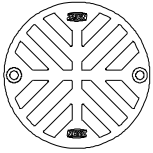
SPECIFICATION SHEET

TAG _____

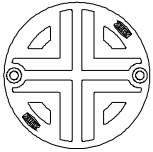
Dimensional Data (inches and [mm]) are Subject to Manufacturing Tolerances and Change Without Notice



(OPTIONAL) -DS1 STRAINER

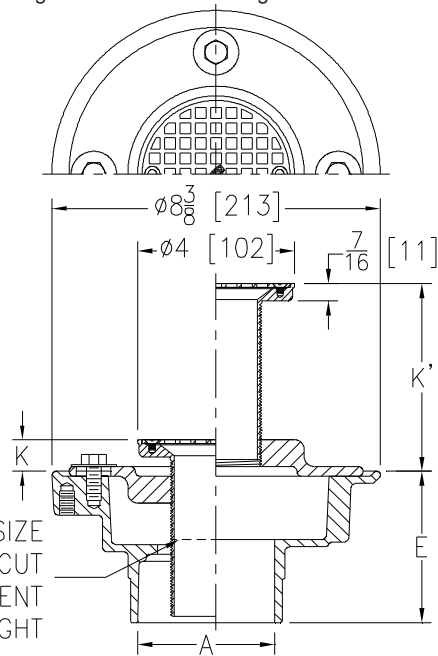


(OPTIONAL) -DS2 STRAINER



(OPTIONAL) -DS3 STRAINER

FOR 2 [51] OUTLET SIZE SHANK MUST BE CUT ACCORDINGLY, DEPENDENT ON REQUIRED ADJUSTMENT HEIGHT



A Pipe Size	Dimensions In Inches [mm]				Approx. Wt. Lbs. [kg]	Strainer Open Area Sq. In. [cm ²]
	K		K'			
	Min.	Max.	Min.	Max.		
2, 3, 4 [51, 76, 102]	13/16 [21]	3-3/4 [95]	1-1/4 [32]	4-13/16 [122]	15 [7]	5 [32]
6 [152]	13/16 [21]	3-3/4 [95]	1-1/4 [32]	4-13/16 [122]	13 [6]	5 [32]

ENGINEERING SPECIFICATION: ZN420

Deep Shank Floor and shower drain, white acid resisting coated cast iron body and invertible membrane clamp with seepage slots, polished nickel bronze adjustable head with 2" N.P.S.M shank and 4" [102mm] diameter round secured strainer.

OPTIONS (Check/specify appropriate options)

PIPE SIZE	(Specify size/type) OUTLET	'E' BODY HT. DIM.
2, 3, 4 [51, 76, 102]	_____ IC Inside Caulk	3-7/8 [98]
2 [51]	_____ IP Threaded	2-3/8 [60]
3 [76]	_____ IP Threaded	2-5/8 [67]
4 [102]	_____ IP Threaded	2-7/8 [73]
6 [152]	_____ IP Threaded	2-3/4 [70]
2, 3, 4 [51, 76, 102]	_____ NH No-Hub	3-7/8 [98]
2, 3, 4 [51, 76, 102]	_____ NL Neo-Loc	3-3/4 [95]

PREFIXES

- _____ ZB White A.R.C. Cast Iron Body and Collar w/ Polished Bronze Top
- _____ ZN White A.R.C. Cast Iron Body and Collar w/ Polished Nickel Bronze Top*

SUFFIXES

- _____ -DS1 Decorative Strainer
- _____ -DS2 Decorative Strainer
- _____ -DS3 Decorative Strainer
- _____ -G Galvanized Cast Iron
- _____ -P Trap Primer Connection (Specify 1/2 [13] or 3/4 [19])
- _____ -SA Stabilizer Assembly (See Z1035)
- _____ -SQ Stabilizer Q-Deck (See Z1035-Q)
- _____ -SR Stabilizer Ring (See Z400-SR)
- _____ -TC Neo-Loc Test Gasket (2, 3, 4 [51, 76, 102] NL Bottom Outlet Only)
- _____ -VP Vandal-Proof Secured Top

* Regularly furnished unless otherwise specified.