

FD-2330 Heavy-Duty Adjustable Floor Drain

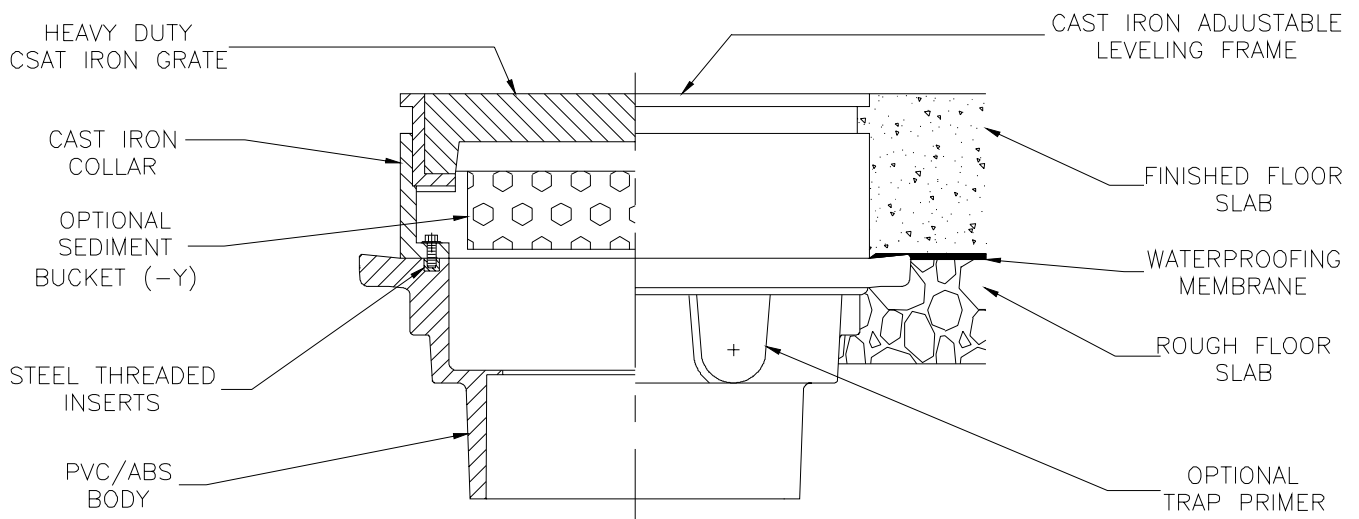
Recommended for heavy vehicles or industrial applications. It consists of a PVC or ABS body with steel-threaded inserts. Complete with a cast iron clamp collar, leveling frame and heavy-duty grate.

Options:

- **-P** 1/2" Trap Primer Connection
- **-Y** Sediment Basket

Product	'A' Connections	'B' Dimensions
FD-2330-PV2	2"[50mm] PVC Hub	2-31/32"[76mm]
FD-2330-PV3	3"[75mm] PVC Hub	3-11/16"[94mm]
FD-2330-PV4	4"[100mm] PVC Hub	3-13/16"[97mm]
FD-2330-AB2	2"[50mm] ABS Hub	2-31/32"[76mm]
FD-2330-AB3	3"[75mm] ABS Hub	3-11/16"[94mm]
FD-2330-AB4	4"[100mm] ABS Hub	3-13/16"[97mm]

Typical installation



ZURN LIGHT COMMERCIAL PLUMBING PRODUCTS 2855 GIRTS ROAD, JAMESTOWN, NY 14701 PHONE: 716-665-1131 FAX: 716-665-3126
World Wide Web: WWW.ZURN.COM