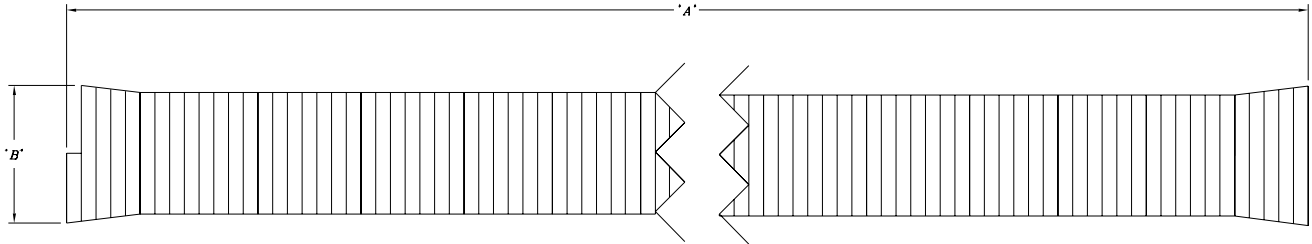




External Bending Spring- QHPAPES- Specification Sheet

Tag _____

Dimensional Data: Inches and [mm] are subject to manufacturing tolerances and change without notice.



Part Number	Description	'A'	'B'
QHPAPES-3	External Bending Spring 1/2"	20.63" [524.0]	1.08" [27.4]
QHPAPES-J	External Bending Spring 5/8"	21.00" [533.4]	1.17" [29.7]
QHPAPES-4	External Bending Spring 3/4"	21.00" [533.4]	1.43" [36.3]
QHPAPES-5	External Bending Spring 1"	20.88" [530.4]	1.73" [43.9]

Engineering Specification: Zurn external bending spring.
QHPAPES is used to help ease bending of Zurn's PEX-AI-PEX
Alumicor® tubing.

Accessories

- ___ Q3PAPX 1/2" Alumicor® PEX-AI-PEX
- ___ QJPAPX 5/8" Alumicor® PEX-AI-PEX
- ___ Q4PAPX 3/4" Alumicor® PEX-AI-PEX
- ___ Q5PAPX 1" Alumicor® PEX-AI-PEX

Rev.	Date: 11/05/08	C.N. No. 99330
Dwg. No. 83992	Prod. No. QHPAPES-__	