



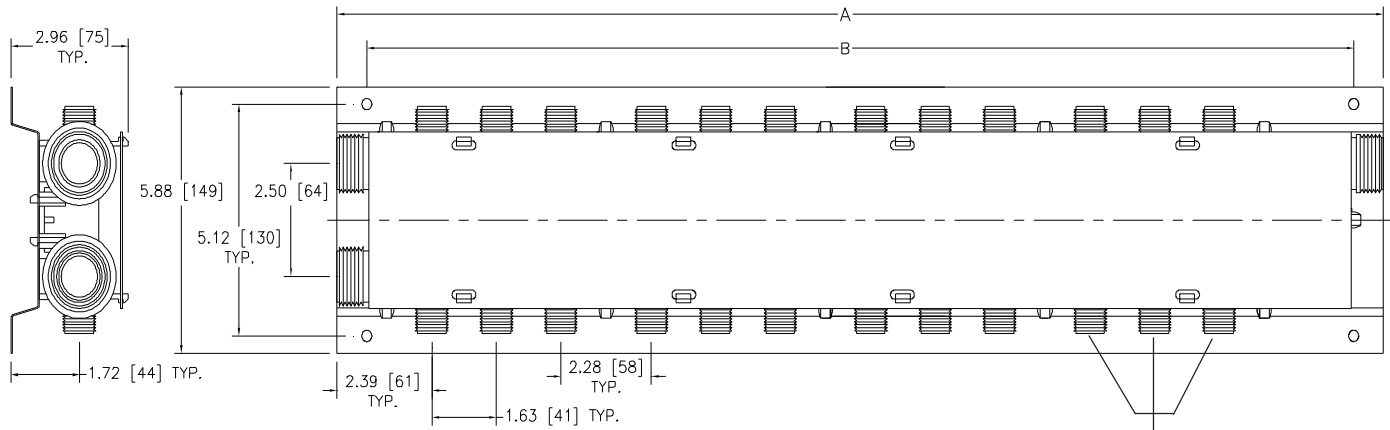
QPPM_H_C_NS

QuickPort Preassembled Manifold
(For Water Softener Applications)

SPECIFICATION SHEET

TAG _____

Dimensional Data (inches and [mm]) are Subject to Manufacturing Tolerances and Change Without Notice



Bottom 3 Ports on each side
are for unconditioned water
(6 Ports Total)

Part Number	A Dim.	B Dim.	No. of Hot Soft Ports	No. of Cold Soft Ports	No. of Hard Water Ports
QPPM9H9C6NS	26.37 [670]	13.81 [351]	9	9	6
QPPM12H12C6NS	31.90 [810]	19.34 [491]	12	12	6
QPPM15H15C6NS	37.43 [951]	24.87 [632]	15	15	6
QPPM18H18C6NS	42.96 [1092]	30.40 [773]	18	18	6
QPPM21H21C6NS	48.49 [1233]	35.93 [914]	21	21	6

Engineering Specification: ZurnPEX[®] 1" diameter polysulfone QuickPort[®] Preassembled Manifold. Comprised of hot and cold 1/2" male straight pipe thread outlets and 1" male straight pipe thread inlets. Manifold has six dedicated unconditioned water ports. Manifold is rated at a maximum pressure of 100 PSI at 180°F. Optional shut off valves can be added for individual on/off control of each distribution line. NSF listed. For use with potable water only

Manifold Accessories

- | | |
|---|---|
| ___ QQSFC55GX 1" Swivel x 1" Barb Adapter - XL Brass | ___ QTC3FQP 1/2" Cap |
| ___ QQSFC45GX 1" Swivel x 3/4" Barb Adapter - XL Brass | ___ QKLABELS Indicator Labels |
| ___ QQTFC45GX 1" Swivel x 3/4" MIP Adapter - XL Brass | ___ QKPANEL29 Access Panel 14" x 29" |
| ___ QQPSFC45X 3/4" Polymer Barb X 1" Brass Swivel | ___ QKPANEL38 Access Panel 14" x 38" |
| ___ QQPSFC55X 1" Polymer Barb X 1" Brass Swivel | ___ QKPANEL54 Access Panel 14" x 54" |
| ___ QTC5FBG 1" Cap-XL Brass | ___ QPMB Mounting Bracket |
| ___ QFNCR4QP 1" x 3/4" Nom Tube Nut-Ring-Cone | ___ QPBV2X 1/2" Swivel x 3/8" Barb Plastic Ball Valve |
| ___ QT555TQP 1" x 1" x 1" Tee | ___ QPBV3X 1/2" Swivel x 1/2" Barb Plastic Ball Valve |
| ___ QT553TQP 1" x 1" x 1/2" Tee | |
| ___ QE55TQP 1" x 1" Elbow | |
| ___ QE53TQP 1" x 1/2" Elbow | |
| ___ QE54TQP 1" x 3/4" Elbow | |
| ___ QC55FQP 1" Female Coupling | |
| ___ MANCOUPLINGG 1" Double Swivel Coupling-XL Brass | |
| ___ QFNCR2QP 1/2" FPT x 3/8" Nom Tube | |
| ___ QAFA33FQP 1/2" FPT x 1/2" Nom Tube | |
| ___ QQSFC23GXP 3/8" XL Brass Barb x 1/2" FPT Plastic Swivel | |
| ___ QQSFC33GXP 1/2" XL Brass Barb x 1/2" FPT Plastic Swivel | |

* Regularly furnished unless otherwise specified.

Zurn Industries, LLC | Zurn PEX, Inc.
116 Maple Street, Commerce, TX U.S.A. 75429 · Ph. 800-872-7277, Fax 800-209-2148
In Canada | Zurn Industries Limited
3544 Nashua Drive, Mississauga, Ontario L4V 1L2 · Ph. 905-405-8272, Fax 905-405-1292
www.zurn.com

Rev. B
Date: 08/15/16
C.N. No. 134984
Prod. | Dwg. No. QPPM_H_C_NS