

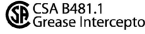
NOTES:

- UNDER-THE-SINK GREASE INTERCEPTOR.
- FOR GRAVITY FLOW APPLICATIONS ONLY.
- INSTALL IN ACCORDANCE WITH MANUFACTURERS INSTRUCTIONS.
- Ø4" NOMINAL POLY PIPE STUB INLET AND OUTLET.
- CONNECT INLET AND OUTLET TO DRAIN PIPING USING FLEXIBLE RUBBER COUPLINGS.
- NON REMOVEABLE BAFFLES.
- COVER NOT LOAD RATED.
- 20 YEAR WARRANTY.
- PATENT: ZURN.COM/PATENTS

Retroceptor™ Model No.: RC 50

Flow Rate: 3.2 l/s (50 gpm) Inlet Size: 100 mm (NPS-4)

Ext. Flow Control: NO

Containment Cap: 45.4 kg (100 lbs) 

Removal Efficiency: 95 %

Access Cover Load: Do Not Step On Cover

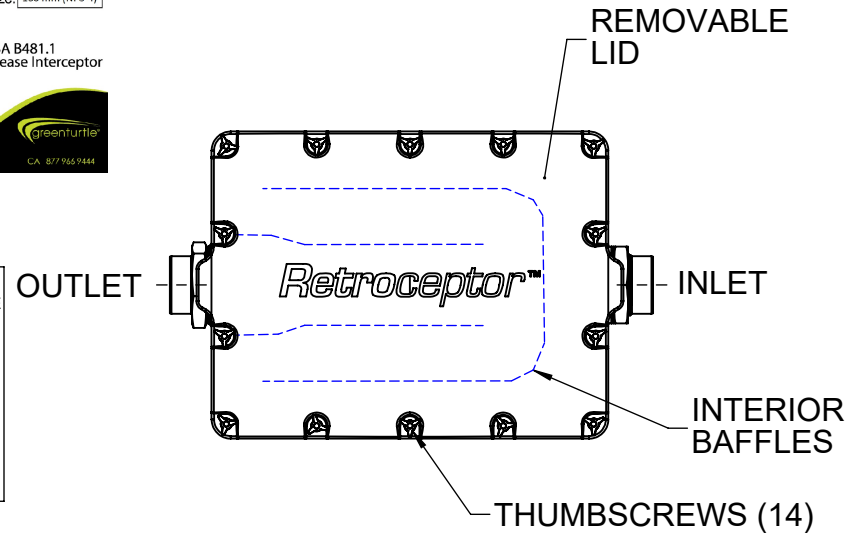
Green Turtle Technologies Ltd. CA 877-965-9444

DETAIL "B"

STANDARD: PDI-G 101
 MANUFACTURER: GREEN TURTLE
 MODEL NO: RC-50
 FLOW RATE: 50 GPM
 GREASE CAPACITY: 100 LBS
 INLET SIZE: 4.5 INCHES

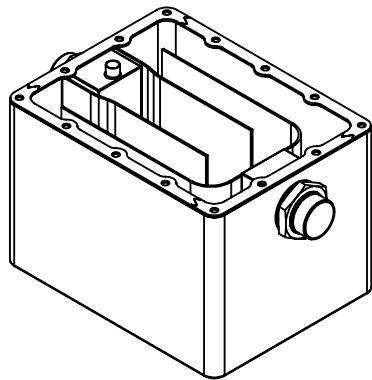


DETAIL "A"

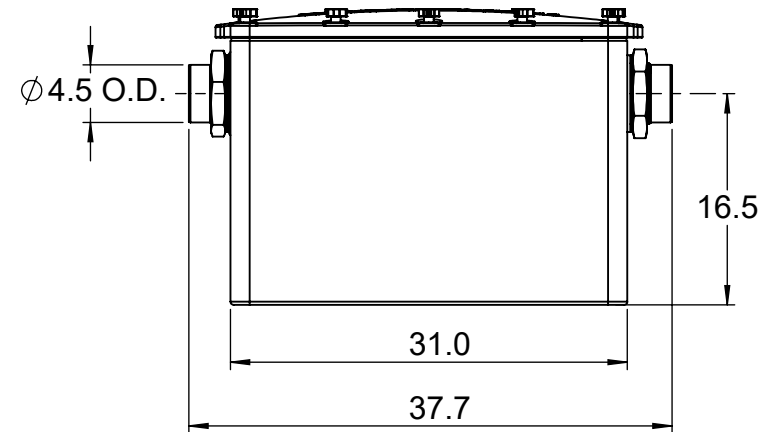
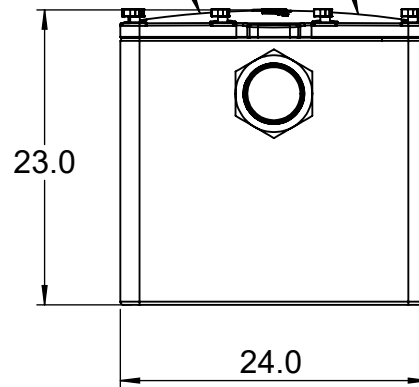


VENTED FLOW CONTROL FOR PDI CERTIFIED INTERCEPTOR MUST BE INSTALLED PRIOR TO THE GREASE INTERCEPTOR IN THE WASTE LINE BEYOND THE LAST CONNECTION FROM THE FIXTURE AND AS CLOSE AS POSSIBLE TO THE UNDERSIDE OF THE LOWEST FIXTURE

DETAIL "A" USA ONLY
 DETAIL "B" CANADA ONLY



BOX WITH LID OFF



ALL DIMENSIONS IN INCHES

MATERIAL:	Proprietary Polymer
WEIGHT [lb]:	71
DO NOT SCALE DRAWING	

	NAME	DATE	TITLE:
DRAWN	LS	30NOV10	RC 50 Retroceptor
CHECKED			

DWG. NO:	REV:
GT0177	4
SHEET 1 OF 1	SIZE:
SCALE: 1:15	A



THE INFORMATION CONTAINED IN THIS DRAWING IS THE SOLE PROPERTY OF GREEN TURTLE TECHNOLOGIES Ltd. ANY REPRODUCTION IN PART OR AS A WHOLE WITHOUT THE WRITTEN PERMISSION OF GREEN TURTLE TECHNOLOGIES Ltd. IS PROHIBITED.