

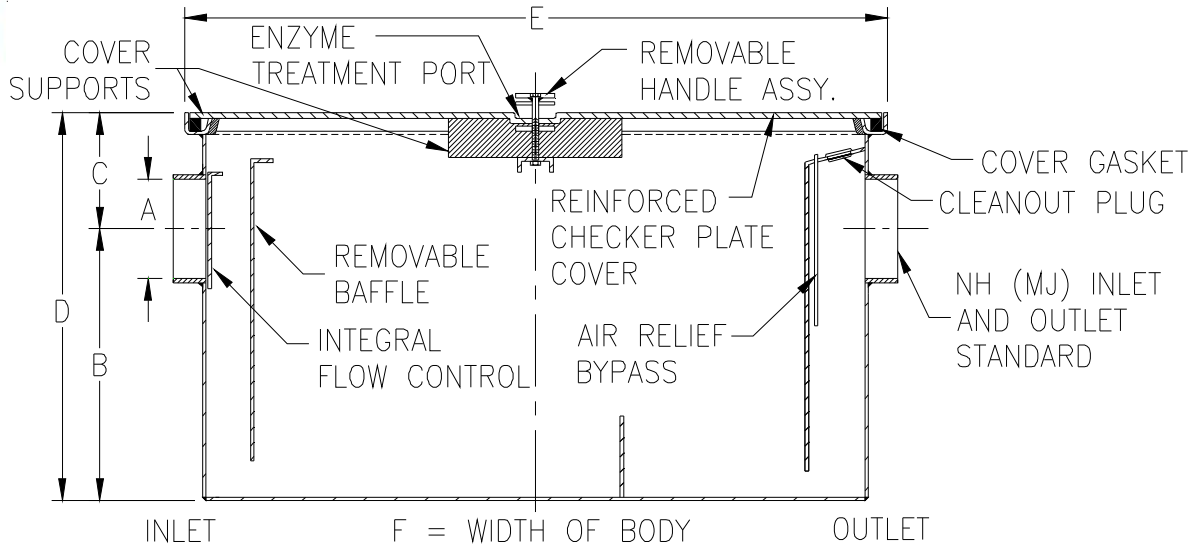


# Z1170 GREASE INTERCEPTOR

SPECIFICATION SHEET

TAG \_\_\_\_\_

Dimensional Data (inches and [ mm ]) are Subject to Manufacturing Tolerances and Change Without Notice



Size	Inlet / Outlet Size A	Flow Rate GPM [LPM]	Grease Capacity Lbs. [Kg]	Appx. Wt. Lbs [Kg]	Dimensions In Inches / [mm]				
					B	C	D	E	F
100	2 [51]	4 [15]	14 [6]	56 [25]	7-1/2 [191]	6 [152]	13-1/2 [343]	17-1/4 [438]	12-1/2 [318]
200	2 [51]	7 [26]	14 [6]	56 [25]	7-1/2 [191]	6 [152]	13-1/2 [343]	17-1/4 [438]	12-1/2 [318]
300	2 [51]	10 [38]	20 [9]	76 [34]	7-1/2 [191]	6 [152]	13-1/2 [343]	20-1/4 [514]	16-1/4 [413]
400	2 [51]	15 [57]	30 [14]	89 [40]	11-1/2 [292]	6 [152]	17-1/2 [445]	20-1/4 [514]	16-1/4 [413]
500	3 [76]	20 [76]	40 [18]	110 [50]	13-1/2 [343]	6 [152]	19-1/2 [495]	20-1/4 [514]	19-1/4 [489]
600	3 [76]	25 [95]	50 [23]	117 [53]	15-1/2 [394]	6 [152]	21-1/2 [546]	20-1/4 [514]	19-1/4 [489]
700	4 [102]	35 [132]	70 [32]	172 [78]	13-1/2 [343]	6 [152]	19-1/2 [495]	32-1/4 [819]	24-1/4 [616]
800	4 [102]	50 [189]	100 [45]	194 [88]	17-1/2 [445]	6 [152]	23-1/2 [597]	32-1/4 [819]	24-1/4 [616]
900	4 [102]	75 [284]	150 [68]	282 [128]	26 [662]	6 [152]	32 [814]	40-1/4 [1014]	24-1/4 [616]

\*\*Inlet and outlet sizes shown indicate standard operating sizes and flow control settings.

ENGINEERING SPECIFICATION: ZURN Z1170 Dura-Coated interior and exterior fabricated steel grease interceptor, PDI, rated at \_\_\_\_ GPM and \_\_\_\_ Lbs. grease capacity, with internal air relief by-pass, bronze cleanout plug, removable pressure equalizing/flow diffusing inlet baffle, fixed bottom outlet baffle, and visible double wall trap seal. Gasketed non-skid secured cover complete with center tie down assembly Regularly furnished with a high inlet and outlet connection. **Note: Location of outlet from bottom of interceptor cannot be changed.**

**PREFIXES**

- \_\_\_ Z Dura-Coated Fabricated Steel\*
- \_\_\_ ZS All Type 304 Fabricated Stainless Steel w/ Aluminum Cover
- \_\_\_ ZSS All Type 304 Fabricated Stainless Steel w Stainless Steel Cover

**SUFFIXES**

- \_\_\_ -AL Aluminum Cover
- \_\_\_ -AR Acid Resistant Coated Fabricated Steel
- \_\_\_ -DI Dual High/Low Inlet.
- \_\_\_ -E Dura-Coated Interior and exterior fabricated steel extension section. (Specify 'C' Dim. required) for recessed installation.
- \_\_\_ -EP Enzyme Port in Cover
- \_\_\_ -HD Heavy-Duty Cover rated at 10,000 lbs. [4536 kg.] maximum safe live load.
- \_\_\_ -K Anchor flange 1-3/4 [44] down from top and 2 [51] wide.
- \_\_\_ -KC Anchor flange 1-3/4 [44] down from top and 2 [51] wide with clamp collar.
- \_\_\_ -L Angle type (Z1108-L) flow control device with plunger.
- \_\_\_ -R Dura-Coated interior and exterior fabricated steel recessing receiver for recessed installation is equipped with adjustable support brackets and gasketed non-skid cover with covered recessed lift handle.
- \_\_\_ -RE Dura-Coated interior and exterior fabricated steel recessing receiver enclosed type for recessed installation. Furnished with adjustable support brackets and gasketed non-skid cover with covered recessed lift handle.
- \_\_\_ -T Cover recessed for tile/terrazzo. A 3 [76] minimum extension height is required. (Specify recess depth - 1/8 [3], 3/4 [19], or 1-1/4 [32]).
- \_\_\_ -75 Sediment Bucket

\*REGULARLY FURNISHED UNLESS OTHERWISE SPECIFIED

<b>REV. C</b>	<b>DATE: 4/16/12</b>	<b>C.N. NO. 122926</b>
<b>DWG. NO. 63645</b>	<b>PRODUCT NO. Z1170</b>	