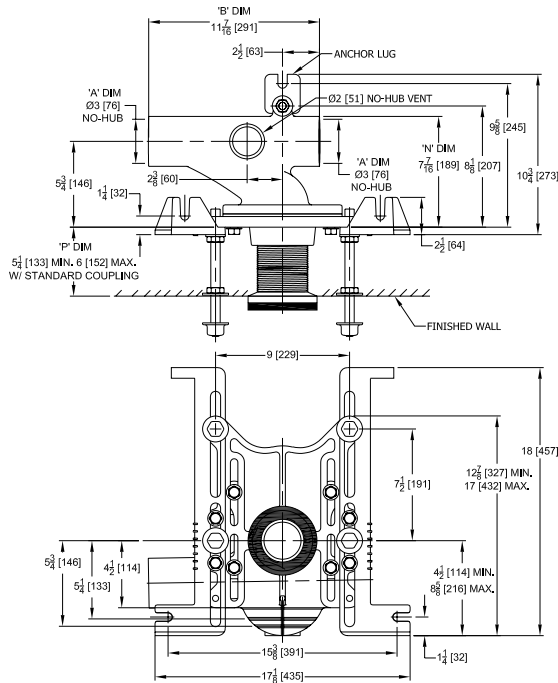




# Z1201-N\_3

## EZCARRY® ADJUSTABLE HORIZONTAL HIGH PERFORMANCE SIPHON JET NO-HUB WATER CLOSET CARRIER SYSTEM

Design and Dimensional Data (inches and [ mm ]) are Subject to Manufacturing Tolerances and Change Without Notice



Product Number	Approx. Wt. lbs [kg]
Z1201-NL3	55 [25]
Z1201-NR3	

### Note:

1. Z coupling, Min. 'P' Dim Obtainable=2 [51]. ZQ coupling, Min. 'P' Dim. Obtainable=5 [127]. EZ-Set™ Coupling, Min. 'P' Dim. Obtainable=4-1/4 [108] or 2-1/16 [52] for 12 [305] NPT.
2. Feet bolted to floor using min. 1/2 [13] dia. anchors.
3. Rear anchor foot required for secure installation.

**Z1201-NR3 Illustrated**

### ENGINEERING SPECIFICATION: ZURN Z1201-N\_3

EZCarry® horizontal siphon jet water closet carrier system with high performance waterway and 3" [76mm] no-hub connections. System includes Dura-Coated cast iron main fitting with hydro-mechanically optimized sweep and extended 2" [51mm] vent, adjustable faceplate, QuickFit™ faceplate gasket, floor mounted pre-fab slotted foot supports with top anchoring pre-fab support base, heavy-duty 1/2" [13mm] rear anchor tie down, fixture bolts, trim, stud protectors, bonded "Neo-Seal" gasket, and corrosion resistant, adjustable 3" [76mm] dia. X 6" [152mm] coupling with integral test cap designed to increase flow velocity and line carry. EZCarry® system complies with the requirements of ASME A112.6.1M up to a 500 lbs [227 kg] static load rating.

### OPTIONS (Check/specify appropriate options)

- \_\_\_ Z1201-NL3      3 [76] No-Hub Left Hand Inlet with Flow to Right
- \_\_\_ Z1201-NR3      3 [76] No-Hub Right Hand Inlet with Flow to Left

### PREFIXES

- \_\_\_ Z    D.C.C.I. System with Zurn ZZ Adjustable Coupling\*
- \_\_\_ ZQ   D.C.C.I. System with NPT Faceplate, Non-Adjustable Coupling

### SUFFIXES

- \_\_\_ -A    Auxiliary Support Assembly (For 'P' Dim. Greater than 18 [457])
- \_\_\_ -CC   Corrosion Resistant Cast Iron Coupling (2-1/4 [57] to 12 [305])
- \_\_\_ -CE   EZ-Set™ Coupling (NPSM 6 [152] , 12 [305] or custom) (NPT 12 [305] or custom)
- \_\_\_ -CL   Custom Length Standard Coupling with Integral Test Cap (Specify Length 4, 8, 10, 12 [102, 203, 254, 305])
- \_\_\_ -CS   2-1/4 [57] Polymer Coupling with Integral Test Cap
- \_\_\_ -F    Floor Mounted, Back Outlet Fixture Support
- \_\_\_ -G    Galvanized Cast Iron
- \_\_\_ -M    Auxiliary Foot Support (for 'P' Dim. 7 thru 18 [178 thru 457])
- \_\_\_ -RYK17   One Piece Unistrut Pre-Fab Foot
- \_\_\_ -VP    Vandal-Proof Trim
- \_\_\_ -X2    2 [51] Carrier Foot Extension Assembly
- \_\_\_ -X3    3 [76] Carrier Foot Extension Assembly
- \_\_\_ -45    Finishing Frame for Siphon Jet System
- \_\_\_ -50    Flush Valve Supply Support for Water Closets

\* Regularly furnished unless otherwise specified.

- ⚠ **WARNING:** Cancer and Reproductive Harm - [www.P65Warnings.ca.gov](http://www.P65Warnings.ca.gov)
- ⚠ **ADVERTENCIA:** Cáncer y daño reproductivo - [www.P65Warnings.ca.gov](http://www.P65Warnings.ca.gov)
- ⚠ **AVERTISSEMENT:** Cancer et effets néfastes sur la reproduction - [www.P65Warnings.ca.gov](http://www.P65Warnings.ca.gov)