



Z1201-N_4-XB

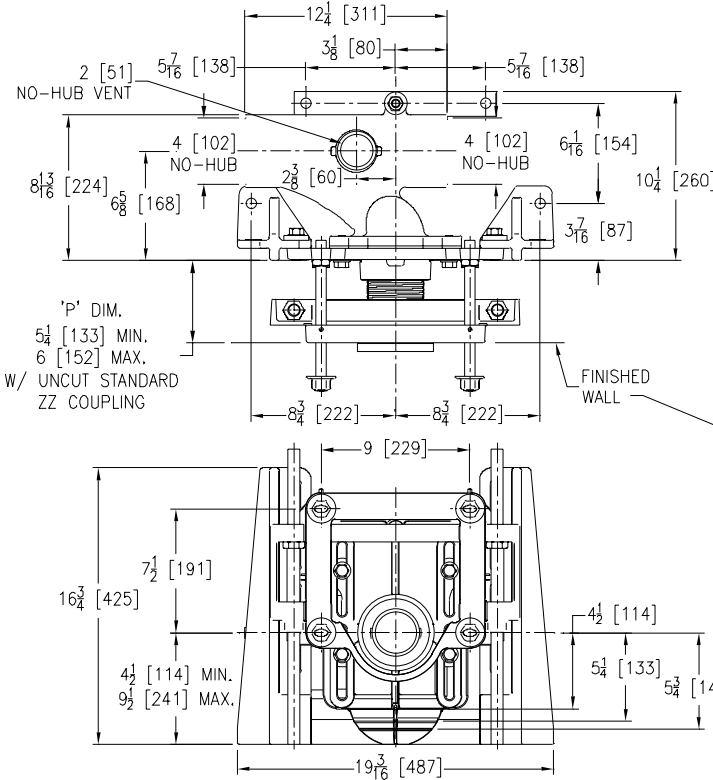
BARIATRIC CARRIER - 1000 lbs [454kg]
 EZCARRY® ADJUSTABLE HORIZONTAL HIGH PERFORMANCE
 SIPHON JET NO-HUB WATER CLOSET CARRIER SYSTEM

SPECIFICATION SHEET

TAG _____

Design and Dimensional Data (inches and [mm]) are Subject to Manufacturing Tolerances and Change Without Notice

Z1201-NR4-XB Illustrated



Product Number	Approx. Wt. lbs [kg]
Z1201-NL4-XB	100 [45]
Z1201-NR4-XB	

Note:

1. Cut ZZ Coupling, Min. 'P' Dim. Obtainable = 3 [76]
2. Feet bolted to floor using 1/2 [13] dia. anchors.
3. Rear anchor assembly required for secure installation.
4. Floor anchors must each be able to withstand a pull-out force of 748 lbs [339 kg].
5. Pull-out forces are calculated values with standard coupling assembly. No safety factor has been applied. See Form # C38 for more information.

ENGINEERING SPECIFICATION: ZURN Z1201-N_4-XB

EZCarry® Bariatric horizontal siphon jet water closet carrier system, with high performance Dura-Coated cast iron main fitting with hydro-mechanically optimized sweep, 4" [102 mm] no-hub connections, and extended 2" [51 mm] vent. Corrosion resistant, adjustable 3" [76mm] X 6" [102mm] cast iron coupling, designed to increase flow velocity and line carry, and labor saving "Neo-Seal" bonded gasket optimizes flow performance while reducing installation steps. Complete system includes an adjustable, gasketed faceplate; floor mounted foot supports; rigid support frame assembly; extra-heavy-duty 1/2" [13 mm] rear anchor tie down; fixture bolts, trim, and stud protectors. EZCarry® XB system complies with all applicable requirements of ASME A112.6.1M up to a 1000 lbs [454 kg] maximum static load.

OPTIONS (Check/specify appropriate options)

- ___ Z1201-NL4-XB 4 [102] No-Hub Left Hand Inlet with Flow to Right
- ___ Z1201-NR4-XB 4 [102] No-Hub Right Hand Inlet with Flow to Left

PREFIXES

- ___ Z D.C.C.I. System with Zurn ZZ Adjustable Coupling*

SUFFIXES

- ___ -CC Corrosion Resistant Cast Iron Coupling (2-1/4 [57] to 12 [305])
- ___ -G Galvanized Cast Iron
- ___ -JC 2 [51] Auxiliary Inlet with 1/8 [3] Bend
- ___ -VP Vandal-Proof Trim
- ___ -50 Flush Valve Supply Support for Water Closets

* Regularly furnished unless otherwise specified.

- WARNING:** Cancer and Reproductive Harm - www.P65Warnings.ca.gov
- ADVERTENCIA:** Cáncer y daño reproductivo - www.P65Warnings.ca.gov
- AVERTISSEMENT:** Cancer et effets néfastes sur la reproduction - www.P65Warnings.ca.gov

Zurn Industries, LLC | Specification Drainage Operation
 1801 Pittsburgh Avenue, Erie, PA USA 16502, Ph. 855.663.9876

In Canada | Zurn Industries Limited
 7900 Goreway Drive, Unit 10, Brampton, Ontario L6T 5W6, Ph. 877.892.5216

www.zurn.com

Rev. D
 Date: 03/11/24
 C.N. No. 145180
 Prod. | Dwg. No. Z1201-N_4-XB