



## Z1201-N\_4-XH

EXTRA-HEAVY-DUTY - 750 lbs [340kg]

EZCARRY® ADJUSTABLE HORIZONTAL HIGH PERFORMANCE

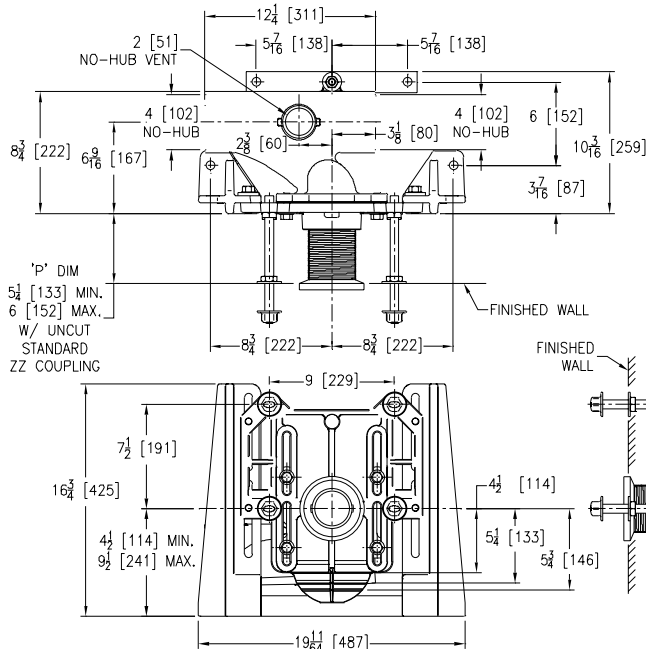
SIPHON JET NO-HUB WATER CLOSET CARRIER SYSTEM

SPECIFICATION SHEET

TAG \_\_\_\_\_

Design and Dimensional Data (inches and [ mm ]) are Subject to Manufacturing Tolerances and Change Without Notice

### Z1201-NR4-XH Illustrated



#### Note:

1. Z coupling, Min. 'P' Dim. Obtainable=2 [51]. EZ-Set™ Coupling, Min. 'P' Dim. Obtainable=4-1/4 [108] or 2-1/16 [52] for 12 [305] NPT.
2. Feet bolted to floor using min. 1/2 [13] dia. anchors.
3. Rear anchor assembly required for secure installation.
4. Floor anchors must each be able to withstand a pull-out force of 820 lbs [372 kg].
5. Pull-out forces are calculated values with standard coupling assembly. No safety factor has been applied. See Form # C38 for more information.

Product Number	Approx. Wt. lbs [kg]
Z1201-NL4-XH	84 [38]
Z1201-NR4-XH	

### ENGINEERING SPECIFICATION: ZURN Z1201-N\_4-XH

EZCarry® Extra-Heavy-Duty horizontal siphon jet water closet carrier system, with high performance Dura-Coated cast iron main fitting with hydro-mechanically optimized sweep, 4" [102 mm] no-hub connections, and extended 2" [51 mm] vent. Corrosion resistant, adjustable 3" [76 mm] dia. X 6" [152 mm] coupling with integral test cap, designed to increase flow velocity and line carry, and labor saving "Neo-Seal" bonded gasket optimizes flow performance while reducing installation steps. Complete system includes an adjustable, gasketed faceplate; floor mounted foot supports; extra-heavy-duty 1/2" [13 mm] rear anchor tie down; fixture bolts, trim, and stud protectors. EZCarry® XH system complies with all applicable requirements of ASME A112.6.1M up to a 750 lbs [340 kg] maximum static load.

#### OPTIONS (Check/specify appropriate options)

- \_\_\_\_ Z1201-NL4-XH 4 [102] No-Hub Left Hand Inlet with Flow to Right  
\_\_\_\_ Z1201-NR4-XH 4 [102] No-Hub Right Hand Inlet with Flow to Left

#### PREFIXES

- \_\_\_\_ Z D.C.C.I. System with Zurn ZZ Adjustable Coupling\*  
\_\_\_\_ ZQ D.C.C.I. System with NPT Faceplate, Non-Adjustable Coupling

#### SUFFIXES

- \_\_\_\_ -CC Corrosion Resistant Cast Iron Coupling (2-1/4 [57] to 12 [305])  
\_\_\_\_ -CE EZ-Set™ Coupling (NPSM 6 [152], 12 [305] or custom) (NPT 12 [305] or custom)  
\_\_\_\_ -CL Custom Length Standard Coupling with Integral Test Cap (Specify Length 4, 8, 10, 12 [102, 203, 254, 305])  
\_\_\_\_ -CS 2-1/4 [57] Polymer Coupling with Integral Test Cap (ZZ Coupling Only)  
\_\_\_\_ -G Galvanized Cast Iron  
\_\_\_\_ -JC 2 [51] Auxiliary Inlet with 1/8 [3] Bend  
\_\_\_\_ -VP Vandal-Proof Trim  
\_\_\_\_ -45 Finishing Frame for Siphon Jet System  
\_\_\_\_ -50 Flush Valve Supply Support for Water Closets

\* Regularly furnished unless otherwise specified.

⚠ **WARNING:** Cancer and Reproductive Harm - [www.P65Warnings.ca.gov](http://www.P65Warnings.ca.gov)

⚠ **ADVERTENCIA:** Cáncer y daño reproductivo - [www.P65Warnings.ca.gov](http://www.P65Warnings.ca.gov)

⚠ **AVERTISSEMENT:** Cancer et effets néfastes sur la reproduction - [www.P65Warnings.ca.gov](http://www.P65Warnings.ca.gov)

Zurn Industries, LLC | Specification Drainage Operation  
1801 Pittsburgh Avenue, Erie, PA USA 16502, Ph. 855.663.9876

In Canada | Zurn Industries Limited  
7900 Goreway Drive, Unit 10, Brampton, Ontario L6T 5W6, Ph. 877.892.5216

[www.zurn.com](http://www.zurn.com)

Rev. F  
Date: 12/20/22  
C.N. No. 144897  
Patent [zurn.com/patents](http://zurn.com/patents)  
Prod. | Dwg. No. Z1201-N\_4-XH