



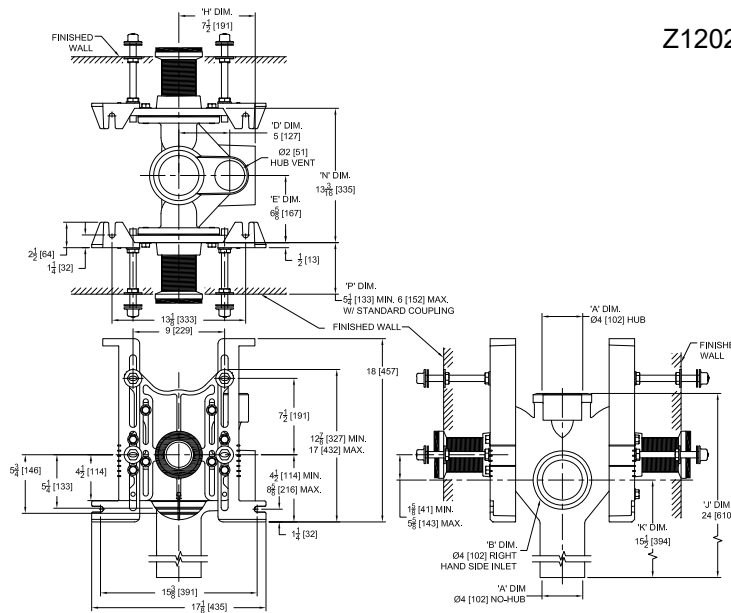
Z1202-1HD4

EZCARRY® ADJUSTABLE VERTICAL BACK-TO-BACK
HIGH PERFORMANCE SIPHON JET HUB AND SPIGOT
WATER CLOSET CARRIER SYSTEM W/ SIDE INLET

SPECIFICATION SHEET

TAG _____

Design and Dimensional Data (inches and [mm]) are Subject to Manufacturing Tolerances and Change Without Notice



Z1202-1HD4 Illustrated

Product Number	Approx. Wt. lbs [kg]
Z1202-1HD4	138 [63]

Note:

1. Z coupling, Min. 'P' Dim. Obtainable = 2 [51].
ZQ coupling, Min. 'P' Dim. Obtainable = 5 [127]
EZ-Set™ Coupling, Min. 'P' Dim. Obtainable = 4-1/4 [108] or 2-1/16 [52] for 12 [305] NPT
2. Feet bolted to floor using min. 1/2 [13] dia. anchors

ENGINEERING SPECIFICATION: ZURN Z1202-1HD4

EZCarry® vertical siphon jet water closet carrier system with high performance waterway and 4" [102mm] hub and spigot connections. System includes Dura-Coated cast iron double main fitting with hydro-mechanically optimized sweep and extended 2" [51mm] vent, with 4" [102mm] side inlet, adjustable gasketed faceplates, floor mounted pre-fab slotted foot supports with top anchoring pre-fab support base, fixture bolts, trim, stud protectors, bonded "Neo-Seal" gaskets, and corrosion resistant, adjustable 3" [76mm] dia. X 6" [152mm] couplings with integral test caps designed to increase flow velocity and line carry. EZCarry® system complies with the requirements of ASME A112.6.1M up to a 500 lbs [227 kg] static load rating.

OPTIONS (Check/specify appropriate options)

____ Z1202-1HD4 4 [102] Hub and Spigot Stack, Double Inlets, 4 [102] Side Inlet, 2 [51] Vent

PREFIXES

____ Z D.C.C.I. System with Zurn ZZ Adjustable Coupling*
____ ZQ D.C.C.I. System with NPT Faceplate, Non-Adjustable Coupling

SUFFIXES

____ -A Auxiliary Support Assembly (For 'P' Dim. Greater than 18 [457])	____ -J 2 [51] Auxiliary Inlet Opposite from 4 [102] Inlet
____ -CC Corrosion Resistant Cast Iron Coupling (2-1/4 [57] to 12 [305])	____ -M Auxiliary Foot Support (for 'P' Dim. 7 thru 18 [178 thru 457])
____ -CE EZ-Set™ Coupling (NPSM 6 [152] , 12 [305] or custom) (NPT 12 [305] or custom)	____ -RYK17 One Piece Unistrut Pre-Fab Foot
____ -CL Custom Length Standard Coupling with Integral Test Cap (Specify Length 4, 8, 10, 12 [102, 203, 254, 305])	____ -VP Vandal-Proof Trim
____ -CS 2-1/4 [57] Polymer Coupling with Integral Test Cap	____ -X2 2 [51] Carrier Foot Extension Assembly
____ -F Mounted, Back Outlet Fixture Support	____ -X3 3 [76] Carrier Foot Extension Assembly
____ -G Galvanized Cast Iron	____ -45 Finishing Frame for Siphon Jet System
	____ -50 Flush Valve Supply Support for Water Closets

* Regularly furnished unless otherwise specified.

⚠ **WARNING:** Cancer and Reproductive Harm - www.P65Warnings.ca.gov

⚠ **ADVERTENCIA:** Cáncer y daño reproductivo - www.P65Warnings.ca.gov

⚠ **AVERTISSEMENT:** Cancer et effets néfastes sur la reproduction - www.P65Warnings.ca.gov

Zurn Industries, LLC | Specification Drainage Operation
1801 Pittsburgh Avenue, Erie, PA USA 16502, Ph. 855.663.9876

In Canada | Zurn Industries Limited
7900 Goreway Drive, Unit 10, Brampton, Ontario L6T 5W6, Ph. 877.892.5216

www.zurn.com

Rev. H
Date: 12/27/22
C.N. No. 144897
Patent zurn.com/patents
Prod. | Dwg. No. Z1202-1HD4