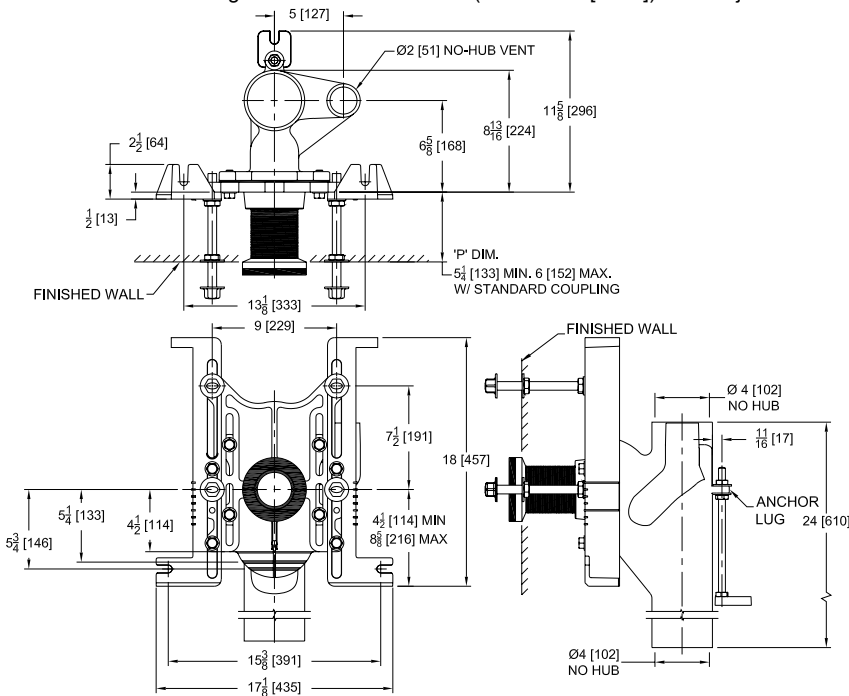




**Z1202-N4**  
**EZCARRY® ADJUSTABLE VERTICAL HIGH PERFORMANCE**  
**SIPHON JET NO-HUB WATER CLOSET CARRIER SYSTEM**

Design and Dimensional Data (inches and [ mm ]) are Subject to Manufacturing Tolerances and Change Without Notice



Product Number	Approx. Wt. lbs [kg]
Z1202-N4	73 [33]

**Note:**

1. Z Coupling, Min. 'P' Dim. Obtainable = 2 [51]. EZ-Set™ Coupling, Min. 'P' Dim. Obtainable = 4-1/4 [108] or 2-1/16 [52] for 12 [305] NPT
2. Feet bolted to floor using min. 1/2 [13] dia. anchors.
3. Rear anchor foot assembly required for secure installation.
4. 2 [51] No-Hub vent connection regularly furnished on right hand side. Left hand available when specified (Suffix -VL)
5. Auxiliary inlet available right (-JR) or left (-JL) or both sides (-JJ) when specified.

**Z1202-N4 Illustrated**

**ENGINEERING SPECIFICATION: ZURN Z1202-N4**

EZCarry® vertical siphon jet water closet carrier system with high performance waterway and 4" [102mm] no-hub connections. System includes Dura-Coated cast iron main fitting with hydro-mechanically optimized sweep and extended 2" [51mm] vent, adjustable faceplate, QuickFit™ faceplate gasket, floor mounted pre-fab slotted foot supports with top anchoring pre-fab support base, heavy-duty 1/2" [13mm] rear anchor tie down, fixture bolts, trim, stud protectors, bonded "Neo-Seal" gasket, and corrosion resistant, adjustable 3" [76mm] dia. X 6" [152mm] coupling with integral test cap designed to increase flow velocity and line carry. EZCarry® system complies with the requirements of ASME A112.6.1M up to a 500 lbs [227 kg] static load rating.

**OPTIONS** (Check/specify appropriate options)

\_\_\_\_ Z1202-N4 4 [102] No-Hub Stack, Single Inlet, 2 [51] Right Hand Vent

**PREFIXES**

- \_\_\_\_ Z D.C.C.I. System with Zurn ZZ Adjustable Coupling\*
- \_\_\_\_ ZQ D.C.C.I. System with NPT Faceplate, Non-Adjustable Coupling

**SUFFIXES**

- |          |   |             |  |
|----------|---|-------------|--|
| ____ -A  | Auxiliary Support Assembly (For 'P' Dim. Greater than 18 [457])   | ____ -JL    | 2 [51] Left-Hand Auxiliary Inlet                               |
| ____ -CC | Corrosion Resistant Cast Iron Coupling (2-1/4 [57] to 12 [305])   | ____ -JR    | 2 [51] Right-Hand Auxiliary Inlet                              |
| ____ -CE | EZ-Set™ Coupling (NPSM 6 [152], 12 [305] or custom) (NPT 12 [305] or custom)                              | ____ -M     | Auxiliary Foot Support (for 'P' Dim. 7 thru 18 [178 thru 457]) |
| ____ -CL | Custom Length Standard Coupling with Integral Test Cap (Specify Length 4, 8, 10, 12 [102, 203, 254, 305]) | ____ -RYK17 | One Piece Unistrut Pre-Fab Foot                                |
| ____ -CS | 2-1/4 [57] Polymer Coupling with Integral Test Cap  | ____ -VL    | Left Hand Vent Connection                                      |
| ____ -F  | Mounted, Back Outlet Fixture Support  | ____ -VP    | Vandal-Proof Trim  |
| ____ -G  | Galvanized Cast Iron  | ____ -X2    | 2 [51] Carrier Foot Extension Assembly                         |
| ____ -JJ | Two 2 [51] Auxiliary Inlets   | ____ -X3    | 3 [76] Carrier Foot Extension Assembly                         |
|          |   | ____ -45    | Finishing Frame for Siphon Jet Water System                    |
|          |   | ____ -50    | Flush Valve Supply Support for Water Closets                   |

\* Regularly furnished unless otherwise specified.

⚠ **WARNING:** Cancer and Reproductive Harm - [www.P65Warnings.ca.gov](http://www.P65Warnings.ca.gov)

⚠ **ADVERTENCIA:** Cáncer y daño reproductivo - [www.P65Warnings.ca.gov](http://www.P65Warnings.ca.gov)

⚠ **AVERTISSEMENT:** Cancer et effets néfastes sur la reproduction - [www.P65Warnings.ca.gov](http://www.P65Warnings.ca.gov)