

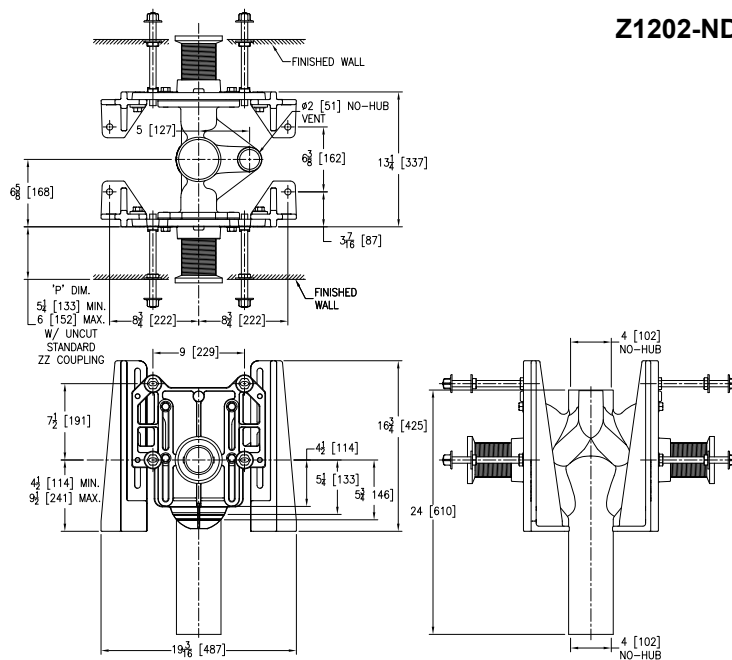
Design and Dimensional Data (inches and [mm]) are Subject to Manufacturing Tolerances and Change Without Notice

Z1202-ND4-XH Illustrated

Product Number	Approx. Wt. lbs [kg]
Z1202-ND4-XH	156 [71]

Note:

1. Cut ZZ Coupling, Min. 'P' Dim. Obtainable = 2 [51]
Cut EZ-Set™ Coupling, Min. 'P' Dim.
Obtainable=4-1/4 [108] or 2-1/16 [52] for
12 [305] NPT
2. Feet bolted to floor using min.1/2 [13] dia. anchors.



ENGINEERING SPECIFICATION: ZURN Z1202-ND4-XH

EZCarry® Extra-Heavy-Duty vertical siphon jet water closet carrier system, with high performance Dura-Coated cast iron main fitting with hydro-mechanically optimized sweep, 4" [102 mm] no-hub connections, and extended 2" [51 mm] vent. Corrosion resistant, adjustable 3" [76 mm] dia. X 6" [152 mm] couplings with integral test caps, designed to increase flow velocity and line carry, and labor saving "Neo-Seal" bonded gaskets optimize flow performance while reducing installation steps. Complete system includes adjustable, gasketed faceplates; floor mounted foot supports; extra-heavy-duty ½" [13 mm] rear anchor tie downs; fixture bolts, trim, and stud protectors. EZCarry® XH system complies with all applicable requirements of ASME A112.6.1M up to a 750 lbs [340 kg] maximum static load.

OPTIONS (Check/specify appropriate options)

____ Z1202-ND4-XH 4 [102] No-Hub Stack, Back-to-Back Inlet (Double), 2 [51] Right Hand Vent

PREFIXES

____ Z D.C.C.I. System with Zurn ZZ Adjustable Coupling*

____ ZQ D.C.C.I. System with NPT Faceplate, Non-Adjustable Coupling

SUFFIXES

____ -CC Corrosion Resistant Cast Iron Coupling
(2-1/4 [57] to 12 [305])

____ -CE EZ-Set™ Coupling (NPSM 6 [152] ,12 [305] or custom)
(NPT 12 [305] or custom)

____ -CL Custom Length Standard Coupling with Integral Test Cap
(Specify Length 4, 8, 10, 12 [102, 203, 254, 305])

____ -CS 2-1/4 [57] Polymer Coupling with Integral Test Cap
(ZZ Coupling Only)

____-G Galvanized Cast Iron

____-JJ Two 2 [51] Auxiliary Inlets

— -JL 2 [51] Left-Hand Auxiliary Inlet

—JR 2 [51] Right-Hand Auxiliary Inlet

_____-VL Left Hand Vent Connection

—VP Vandal-Proof Trim

_____ -45 Finishing Frame for Siphon Jet System

____ -50 Flush Valve Supply Support for Water Closets

* Regularly furnished unless otherwise specified.

⚠ WARNING: Cancer and Reproductive Harm - www.P65Warnings.ca.gov

⚠️ ADVERTENCIA: Cáncer y daño reproductivo - www.P65Warnings.ca.gov

AVERTISSEMENT: Cancer et effets néfastes sur la reproduction - www.P65Warnings.ca.gov

Zurn Industries, LLC | Specification Drainage Operation
1801 Pittsburgh Avenue, Erie, PA USA 16502, Ph. 855.663.9876

In Canada | Zurn Industries Limited
7900 Goreway Drive, Unit 10, Brampton, Ontario L6T 5W6, Ph. 877.892.5216

www.zurn.com

Rev. D

Rev: B
Date: 01/05/23

C.N. No. 144897

Patent [zurn.com/patents](http://www.zurn.com/patents)

Prod. | Dwq. No. Z1202-ND4-XH