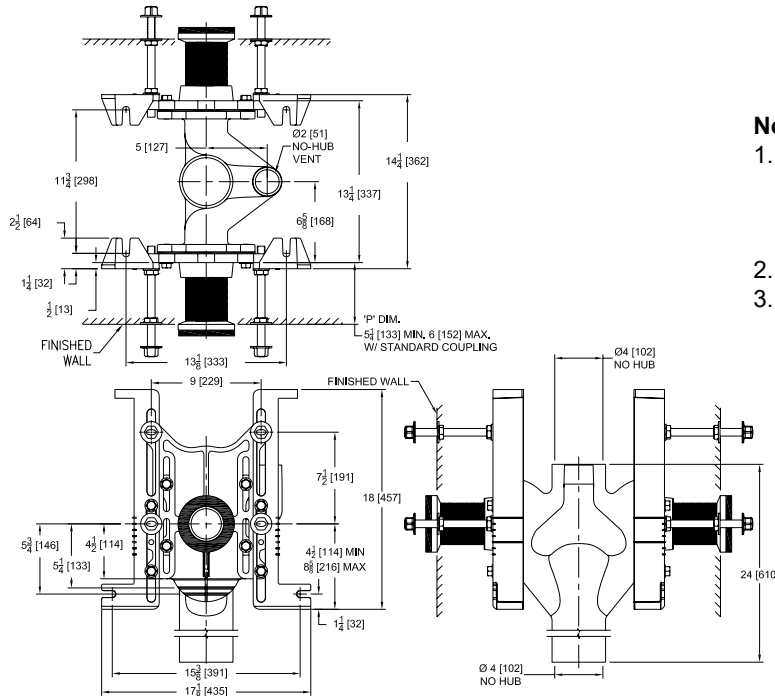




Z1202-ND4

EZCARRY® ADJUSTABLE VERTICAL BACK-TO-BACK
HIGH PERFORMANCE SIPHON JET NO-HUB WATER
CLOSET CARRIER SYSTEM

Design and Dimensional Data (inches and [mm]) are Subject to Manufacturing Tolerances and Change Without Notice



Product Number	Approx. Wt. lbs [kg]
Z1202-ND4	119 [54]

Note:

1. Z Coupling, Min. 'P' Dim. Obtainable = 2 [51]. EZ-Set™ Coupling, Min. 'P' Dim. Obtainable = 4-1/4 [108] or 2-1/16 [52] for 12 [305] NPT
2. Feet bolted to floor using min. 1/2 [13] dia. anchors.
3. Auxiliary inlet available right (-JR) or left (-JL) or both sides (-JJ) when specified.

ENGINEERING SPECIFICATION: ZURN Z1202-ND4

EZCarry® vertical siphon jet water closet carrier system with high performance waterway and 4" [102mm] no-hub connections. System includes Dura-Coated cast iron double main fitting with hydro-mechanically optimized sweep and extended 2" [51mm] vent, adjustable faceplates, QuickFit™ faceplate gaskets, floor mounted pre-fab slotted foot supports with top anchoring pre-fab support base, fixture bolts, trim, stud protectors, bonded "Neo-Seal" gaskets, and corrosion resistant, adjustable 3" [76mm] dia. X 6" [152mm] couplings with integral test caps designed to increase flow velocity and line carry. EZCarry® system complies with the requirements of ASME A112.6.1M up to a 500 lbs [227 kg] static load rating.

OPTIONS (Check/specify appropriate options)

____ Z1202-ND4 4 [102] No-Hub Stack, Double Inlets, 2 [51] Vent

PREFIXES

- ____ Z D.C.C.I. System with Zurn ZZ Adjustable Coupling*
- ____ ZQ D.C.C.I. System with NPT Faceplate, Non-Adjustable Coupling

SUFFIXES

- | | |
|--|--|
| ____ -A Auxiliary Support Assembly (For 'P' Dim. Greater than 18 [457]) | ____ -JJ Two 2 [51] Auxiliary Inlets |
| ____ -CC Corrosion Resistant Cast Iron Coupling (2-1/4 [57] to 12 [305]) | ____ -JL 2 [51] Left-Hand Auxiliary Inlet |
| ____ -CE EZ-Set™ Coupling (NPSM 6 [152], 12 [305] or custom) (NPT 12 [305] or custom) | ____ -JR 2 [51] Right-Hand Auxiliary Inlet |
| ____ -CL Custom Length Standard Coupling with Integral Test Cap (Specify Length 4, 8, 10, 12 [102, 203, 254, 305]) | ____ -M Auxiliary Foot Support (for 'P' Dim. 7 thru 18 [178 thru 457]) |
| ____ -CS 2-1/4 [57] Polymer Coupling with Integral Test Cap (ZZ Coupling Only) | ____ -RYK17 One Piece Unistrut Pre-Fab Foot |
| ____ -F Mounted, Back Outlet Fixture Support | ____ -VP Vandal-Proof Trim |
| ____ -G Galvanized Cast Iron | ____ -X2 2 [51] Carrier Foot Extension Assembly |
| | ____ -X3 3 [76] Carrier Foot Extension Assembly |
| | ____ -45 Finishing Frame for Siphon Jet Water System |
| | ____ -50 Flush Valve Supply Support for Water Closets |

* Regularly furnished unless otherwise specified.

⚠ **WARNING:** Cancer and Reproductive Harm - www.P65Warnings.ca.gov

⚠ **ADVERTENCIA:** Cáncer y daño reproductivo - www.P65Warnings.ca.gov

⚠ **AVERTISSEMENT:** Cancer et effets néfastes sur la reproduction - www.P65Warnings.ca.gov