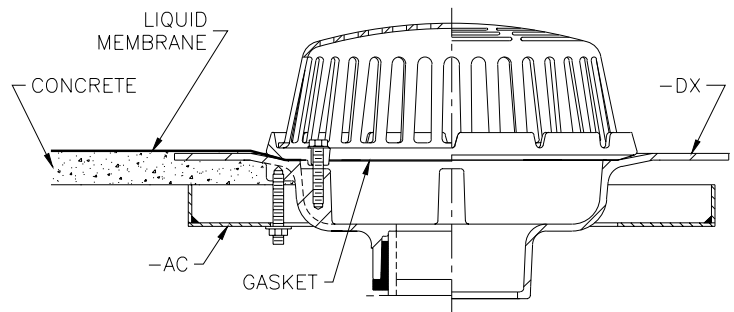


TYPICAL INSTALLATIONS

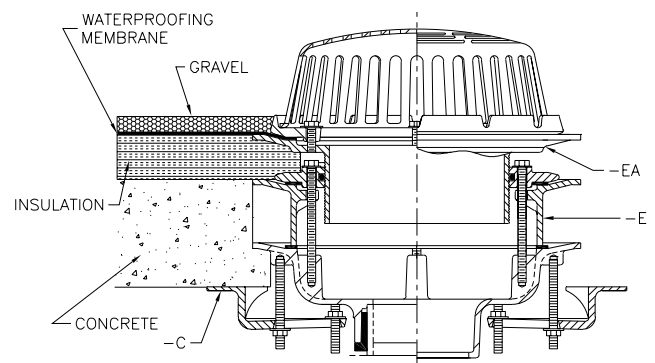
CONCRETE DECK with LIQUID MEMBRANE Z100-AC-DX

Drain installed in a concrete deck with a mopped Dex-O-Tex finish. Drain is illustrated with angular underdeck clamp (-AC) and 20" diameter Dex-O-Tex flange (-DX). The (-AC) option is a Zurn alternate to the standard underdeck clamp which allows clearance around the drain body.



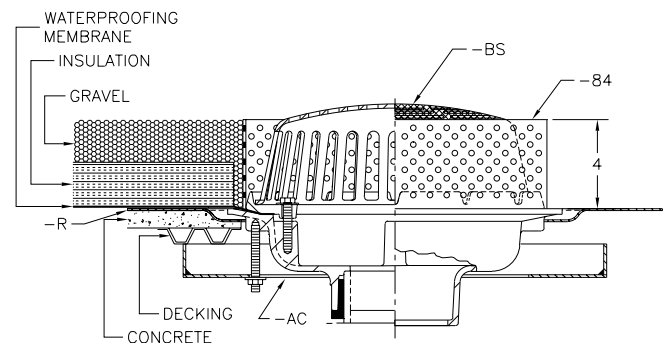
THICK CONCRETE DECK with INSULATION Z100-C-E-EA

Drain installed in an insulated concrete deck. Drain is illustrated with underdeck clamp (-C), static extension (-E) and adjustable extension assembly (-EA). This drain allows over 2" of adjustment for varying insulation thicknesses.



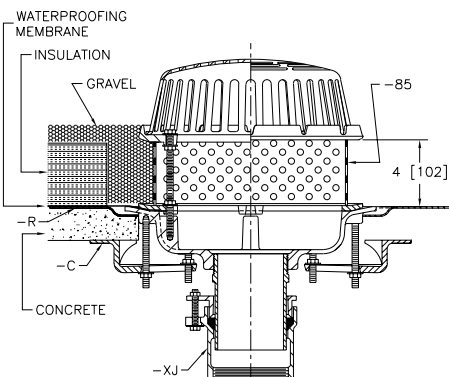
INVERTED ROOF STEEL DECK Z100-AC-BS-R-84

Drain installed in a steel deck with insulated built-up roof. Drain is illustrated with angular underdeck clamp (-AC), bronze mesh screen over dome (-BS), roof sump receiver (-R), and gravel guard (-84).



INVERTED ROOF CONCRETE DECK Z100-C-R-XJ-85

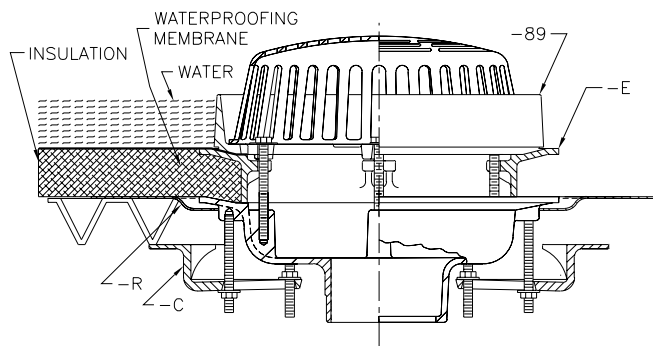
Drain installed in an insulated concrete deck. Drain is illustrated with underdeck clamp (-C), roof sump receiver (-R), vertical expansion joint (-XJ), and Zurn ballast guard extension (-85). The (-XJ) option is also available in 8" and 12" diameter drains. (See Z121 and Z125.)



TYPICAL INSTALLATIONS

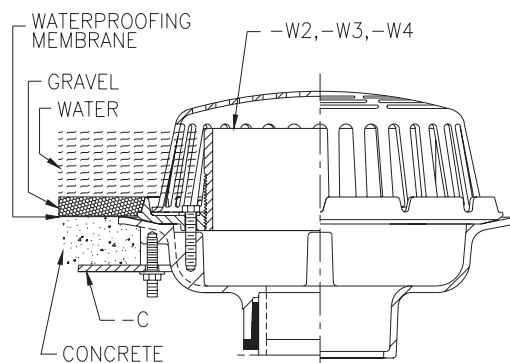
STEEL DECK WATER INSULATED and/or OVERFLOW Z100-C-E-R-89

Drain installed in a steel deck. Drain is illustrated with underdeck clamp (-C), static extension (-E), roof sump receiver (-R), and 2" high external water dam (-89). The (-89) feature is used where a level of water is to be maintained for insulation purposes or where an overflow drain is required. The (-89) option is also available in 8" and 12" diameter drains. (See Z121 and Z125.)



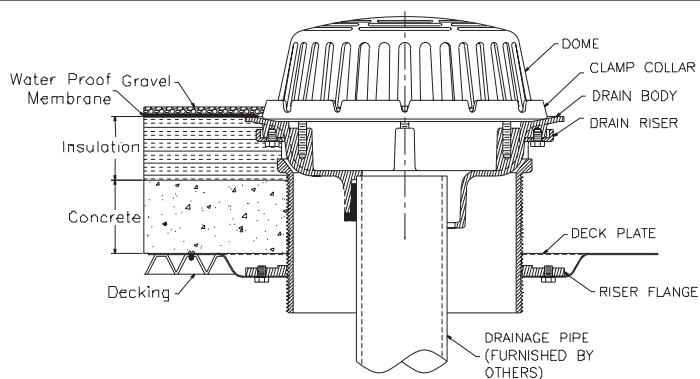
PRECAST CONCRETE DECK with OVERFLOW DRAINAGE Z100-C-W2, -W3, or -W4

Drain installed in a precast concrete deck. Drain is illustrated with underdeck clamp (-C) and 4" internal water dam (-W4). The (-W4) option is used to maintain a 4" water level on the roof for insulation purposes or for secondary drainage. The water dam is offered in 2" (-W2), 3" (-W3), or 4" (-W4) heights to meet specific application requirements.



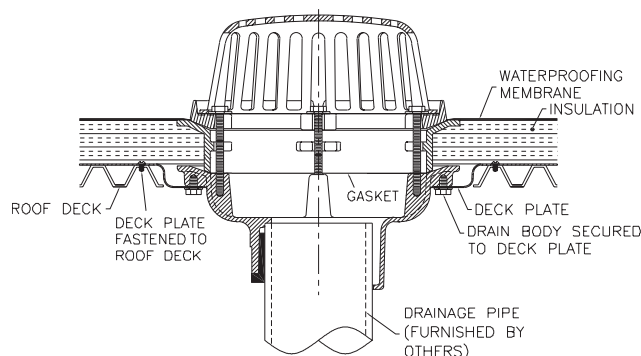
15" DIAMETER ADJUSTABLE ROOF DRAIN with DRAIN RISER Z100-DR

Drain installed in a steel deck with insulated roof. Drain is illustrated with the Top-Set® drain riser adjustable roof extension assembly (-DR).



INSULATED STEEL DECK Z121-DP-E

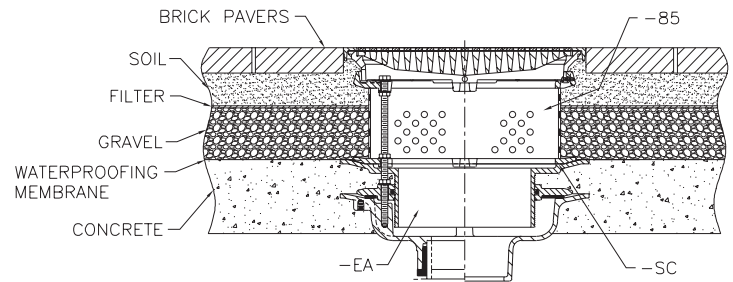
Drain installed in a steel deck. Drain is illustrated with static extension (-E) and Top-Set® roof deck plate (-DP). Deck plate replaces the need for an underdeck clamp (-C) and roof sump receiver (-R).



TYPICAL INSTALLATIONS

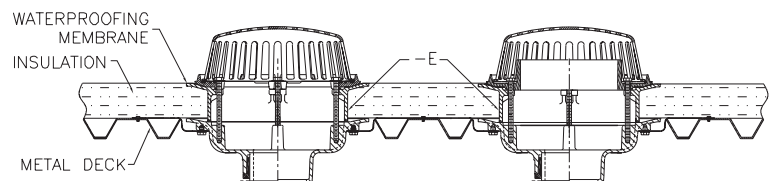
14" PROM-DECK DRAIN Z150-EA-SC-85

Drain installed in an above-grade concrete deck. Drain is illustrated with adjustable extension (-EA), secondary clamping collar (-SC), and stainless steel ballast guard extension (-85).



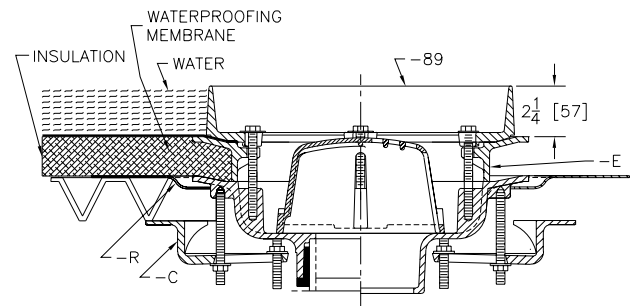
15" DIAMETER COMBINATION MAIN ROOF and OVERFLOW DRAIN Z163-E

Drain installed in a steel deck with insulated roof. Drain is illustrated with static extension (-E) and double Top-Set® deck plate.



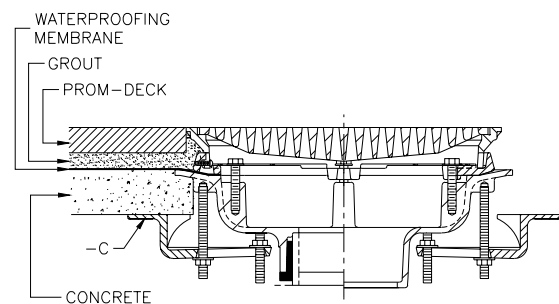
RECEPTOR DRAIN Z108-C-E-R-89

Drain installed in a steel deck. Drain is illustrated with underdeck clamp (-C), static extension (-E), roof sump receiver (-R), and a 2" high external water dam (-89), open sump and a small bottom dome strainer. Specify where overflow or indirect waste application is required.



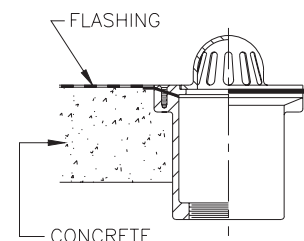
PROM DECK INSTALLED Z150-C

Prom deck drain installed in a concrete deck. 14" square drain is illustrated with underdeck clamp (-C) and heavy-duty, heel-proof grate. Other Prom Deck drains include the 11" Z154 and 8" Z158. Both of these drains are furnished with a light-duty, heel-proof grate.



CORNICE DRAIN INSTALLED – CONCRETE DECK Z180

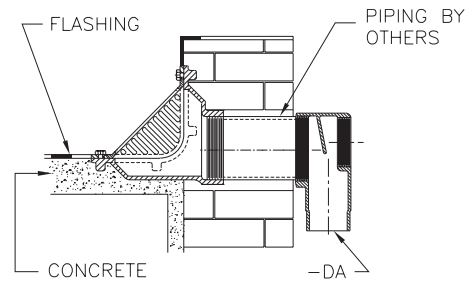
This 4" diameter cornice drain is complete with clamping collar and available with 1-1/2" or 3" high dome. For a drain with 90° outlet, see Z185.



TYPICAL INSTALLATIONS

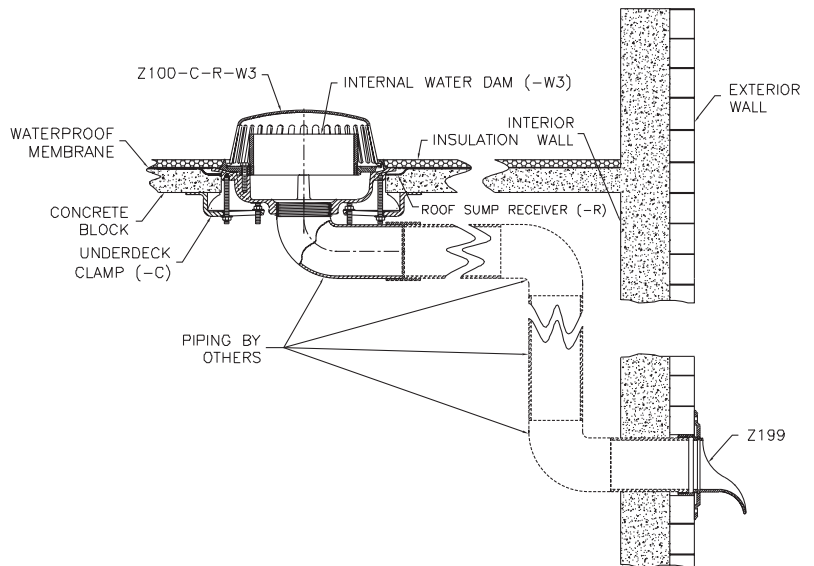
SCUPPER DRAIN INSTALLED Z187-DA

Zurn scupper drain illustrated with regularly furnished clamping collar, oblique grate and optional downspout adapter (-DA). See Z189 for additional scupper drains.



DOWNSPOUT NOZZLE Z199

Overflow drain piping shown inside of building wall and exiting just above ground level.



DOWNSPOUT COVER Z199-DC

Overflow drain piping shown with round stainless steel downspout cover with perforated hinged strainer installed flush with exterior wall.

