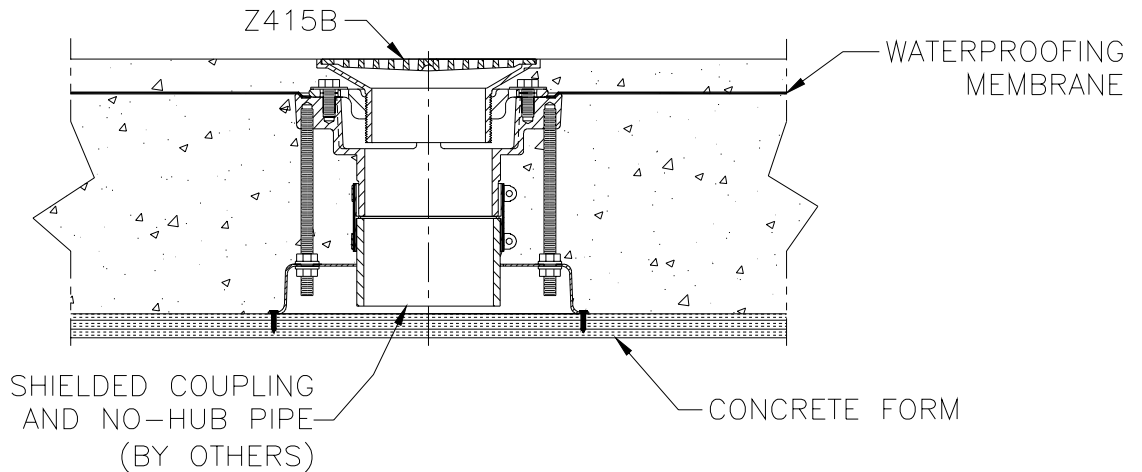




TYPICAL INSTALLATION FOR
Z1035 & Z1036
DRAIN INSTALLATION STABILIZER

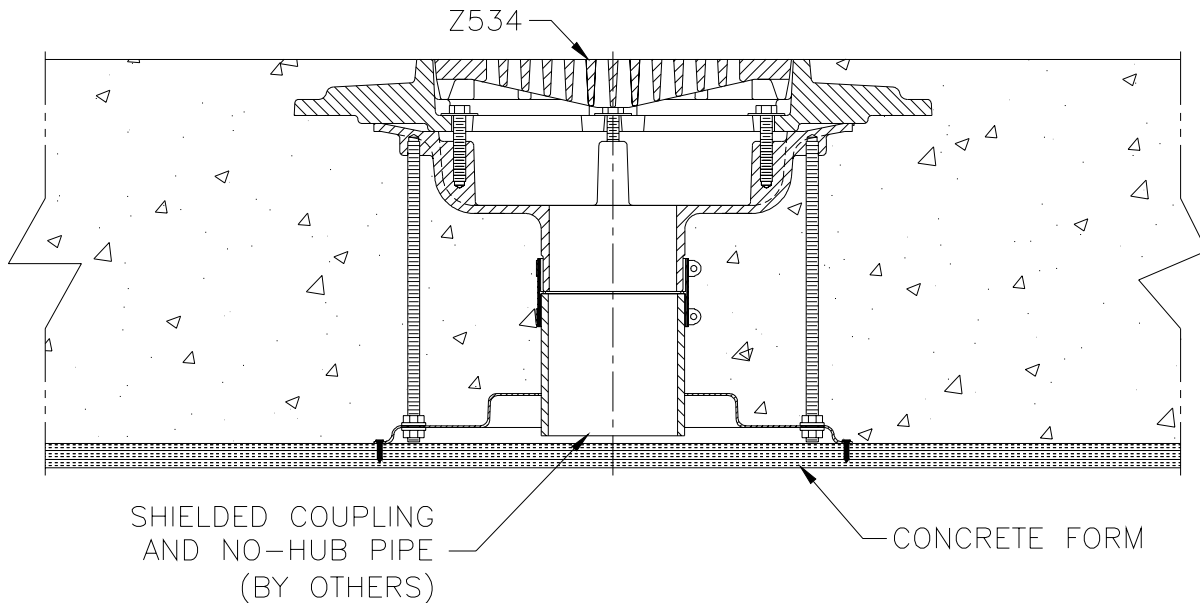
PATENT
PENDING

Dimensional Data (inches and [mm]) are Subject to Manufacturing Tolerances and Change Without Notice



Z1035
FLOOR DRAIN INSTALLATION STABILIZER

Drain installation stabilizer (designed for 8 3/8 diameter drain body) shown installed with a Z415B floor drain in concrete, using a waterproofing membrane and no-hub outlet connection. Also available with neo-loc outlet connection.



Z1036
FLOOR DRAIN INSTALLATION STABILIZER

Drain installation stabilizer (designed for 12 and 15 diameter drain bodies) shown installed with a Z534 parking deck drain with support flange in concrete, using no-hub outlet connection. Also available with neo-loc outlet connection.

Form #	FD72	Date:	9/20/04	C.N. No.	92566	Rev.
--------	------	-------	---------	----------	-------	------