




TRENCH DRAIN SYSTEMS

Eliminate jobsite complications with the easiest trench drains to install, built to your requirements.



The theme here was about making it easy. We're a company that focuses on safety and quality. With all of our moving parts on the job, Zurn's trench drain systems added up to less labor, less costs, and less worry.

ZACH GREEN

SUPERINTENDANT, KIEWIT GUIDEWAY





A RELIABLE PARTNER

We're Solving Smarter

At Zurn, we aren't just a product and service provider, we're problem solvers – continuously focused on water control, safety and conservation. From our backflow products to our finish plumbing, piping systems, and of course, our full line of trench drain products, we are known throughout the industry as a reliable leader.



SYSTEMS THAT COVER THE SPECTRUM

Customize your drain system to create a dream solution for your clients. We offer the most versatile trench drainage systems available to satisfy your project requirements. From construction to the application, you know what you need and you can expect us to have it available upon demand. No special requests or back orders.

Recreational

From water parks to sport tracks, high-performance features minimize standing water to maintain a safer, slip-free surface.

Industrial

Modular pre-sloped shape prevents build-up, ensures sanitation, and promotes productivity at any work site.

Civil

Heavy-duty construction keeps foot traffic, train stations and highways clear and moving, in rain or snow, freezing cold, no matter the load or type of transportation.

Commercial

Customizable solutions allow clients to meet their aesthetic and workflow goals, whether it's cascading lager at a microbrewery or coffee grounds at a local cafe.



YOU DECIDE
WE DESIGN

At Your Service, Around Your Needs

Consult with an expert for design support, modifications, or simply to confirm specs. Whether it's discussing our product portfolio, selecting grate style, or drafting drawings for your client quote, our in-house engineers can give you the materials (and assurance) to guide you through the process. If you change your mind or need to add an accessory, we can make that happen too.

You already have a job to do, let us help with the upfront work.



ENGINEERED DESIGN SYSTEMS DRAWINGS

See the big picture before you even sign the paperwork. Your service begins as soon as you start comparing trench drains (and manufacturers). We'll draft options for you to review, so you can make recommendations to your clients and make decisions with confidence.

A photograph of a construction site on a city street. In the foreground, a large, rusty metal grate covers a drainage opening in the pavement. The street is under construction, with workers in orange safety vests and hard hats visible. A yellow excavator and other machinery are present. In the background, there are multi-story brick buildings with many windows. The sky is clear and blue.

CUT COSTS
NOT CORNERS

Fraction of the Cost. Full Commitment.

We design all of our systems to reduce labor, speed up installation, while offering unmatched quality.

LEAN TAKES A LOT OF GROUNDWORK

Lean construction isn't a claim. It takes commitment. It involves surveying real workers and problem solving for your average jobsite challenges. Our research and development team recognizes the extra costs and manpower behind every installation.

That's why, we engineered our systems with the ideal balance of lightweight design and durability. We made sure contractors could handle our trench drains without heavy lifting, alignment hardware, or extra hands. The longer, modular assembly eliminates more than just installation pains – there's no leveling fee or steep freight charges to tack on to your client invoices.



Two workers (and no equipment) easily lift and install our Z888 Hi-Cap® trench drain.

“

We just finished a job with Zurn trench drains and couldn't be happier with the end result. The quality of the product and uncomplicated installation saved us 30 percent on labor costs compared to other trench drain systems.

TONY WILLIARD PRESIDENT, TONY WILLIARD CONSTRUCTION

”



WORKS AS
HARD AS YOU

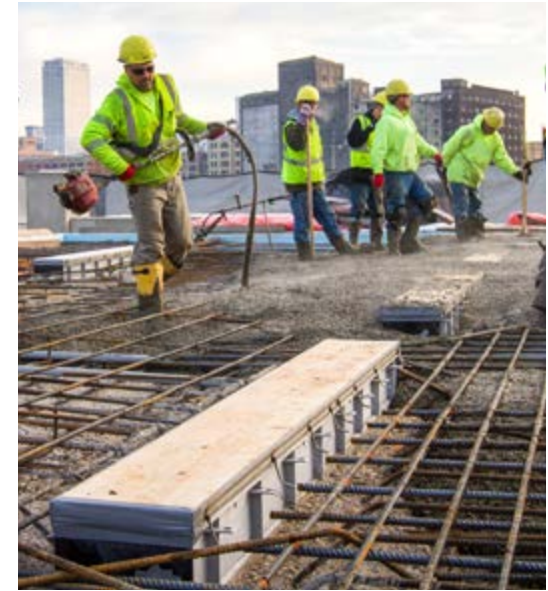
Materials that Perform

Your reputation is tied to every job. When you move on to your next project, make sure the trench drains you install work up to your expectations.

DEBRIS, AND THE COMPETITION, ARE LEFT BEHIND

You want to install a system that works per your project requirements. You need a solution that withstands it all – foot traffic, heavy loads, flow rate, the test of time. We manufacture for durability with features, like Dura-Coated steel frames and grates, mechanical overlaps, rebar clips, and combination anchor tabs and leveling devices.

We also factor in performance through form and function – depth for proper drainage, yet shallow installation, built-in molded slope for superior flow rates, heel-proof grating for foot traffic, non-porous internal surface for enhanced velocity.



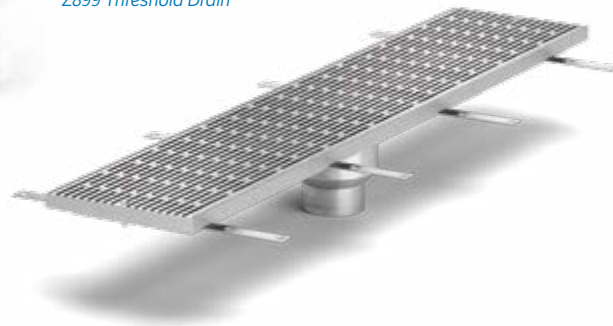
Z886 Perma-Trench®



High Density Polyethylene

It won't crack in cold temps or corrode from harsh chemicals. Our HDPE formulation delivers structural strength, while still being lightweight.

Z899 Threshold Drain



Stainless Steel

If sanitary conditions, chemicals and corrosion matter, this is the material for the job. Not only does it ensure hygiene and easy maintenance, it looks sleek and lasts.

Aluminum

Sometimes stopping traffic is just as important as keeping it moving. Aluminum does both. It complements elegant spaces, stands up to use, and resists corrosion.

Polypropylene

Polypropylene is a safe bet for compliance at an affordable cost. It's a very flexible material that resists most chemicals and avoids water absorption.

Fiberglass

Looking for the next best option to stainless steel? Fiberglass provides high strength and high resistance at a lower upfront cost. It's also another durable, yet lightweight solution.



CUSTOMIZED TO COMPLY

Eliminate Risks With Complete Compliance

Let us narrow down what you're looking for to satisfy compliance, on top of design preferences and performance.

PEACE OF MIND BY DESIGN

We talk about design options, but compliance drives decision making just as much when it comes to customizing your system. Building regulations, safety, local ordinance – to a customer those words carry the weight of possible fines, legal disputes, and unknown risks.

Take the concerns out of compliance. Our trench drains don't just fulfill the most rigorous standards, they're designed to adhere to emerging codes. So when your customers hear total compliance, it will put their minds at ease.



BROUGHT UP TO CODE

If your project involves trench drains, we know you have important decisions ahead of you. Our experts are on hand to answer your questions and verify codes. We have trench drain solutions that:

- ✓ Comply with 2013 California Building Code 403.6.1, 403.6.2, 3007.4, 3008.4
- ✓ Comply with 2013 San Francisco Fire Code, Section 511.1.4 for use in front of elevators
- ✓ Adhere to ADA compliance for heel safety and wheelchair accessibility
- ✓ Provide an adaptive design that is positioned to meet emerging codes
- ✓ Offer non-slip grating that eliminates safety risks
- ✓ Are certified by NATA for load bearing



DESIGN BETWEEN THE LINES

Industrial Strength Without the Industrial Look

Manufacturers talk about building tough, but what about being easy on the eyes? We account for ranging style and composition.

GET INSPIRED BEFORE YOU GET STARTED

From fluid waves to clean lines, our trench drain options will complement their environment, as subtly or stately as your client desires. Every product in our portfolio assembles together to produce seamless custom-made systems.



Pictured left to right: ZS880 Stainless Steel Drains in Basket Weave (BW), Decorative Block (DB), Serenity Gate (SG), Wave Grate (WG), Linear Slotted (LS)

Solutions for Every Project

When the project prerequisites keep adding up, it's hard to know where to begin. We'll cut through the complexity for you. Our systems can be narrowed down by industry. And while the solutions range from decorative to utility, you can expect ease of installation and lower cost of ownership with every trench drain.

See how we solve for every customer you serve. Then, let us guide you through the essential details one on one. No matter the application, we'll find a system that's a fit for you and your customer.



Chemical Processing

We engineered these industrial strength drains to resist corrosion from harsh chemicals and allow proper flow.



Decorative

When form matters as much as function, customize a system for your customers with support from our design team. We'll help you confirm specs and complement building aesthetics.



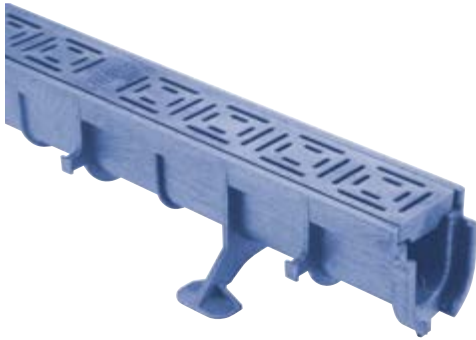
Elevator & Threshold

Help building owners keep the path clear and up to code with a system that puts compliance first with every built-in feature, from wheelchair accessibility to emergency egress.



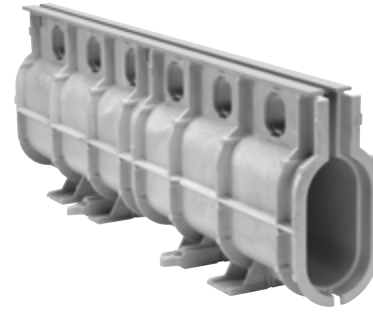
Food Processing

From heavy-duty stainless steel to reinforced polymer, these systems hold up against extreme hot and cold temps and harsh cleaning materials – a necessity for high demand businesses.



Residential

Proper drainage and design are the hallmarks of residential customer demand. Zurn delivers a wide range of grate styles, slope, and materials to keep your customers happy.



Sports Complex-Recreational

When optimal performance is on the line, install a drain that keeps pace in velocity, speed and strength. On the field or near a pool, our slip-proof systems flow at the ideal rates.



Transportation

Another great option for high traffic applications. These systems install with less labor and in a little more than half the time, yet hold up to snow on the ground, tracks, or freight trucks moving around.



Utility

Hydraulics, production, electrical - the utility industry means getting the job done. These systems match that mentality with wide throats, covers and tough construction.



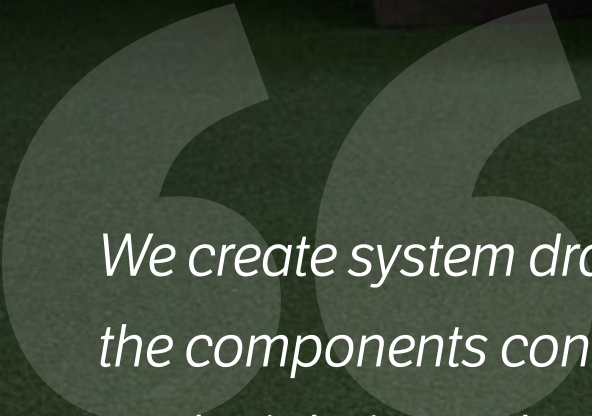
General Purpose Drainage Interior

One word here: lightweight. These systems install without much effort, offer a sleek look that blends into the building aesthetics and get the job done to meet expectations and standards.



General Purpose Drainage Exterior

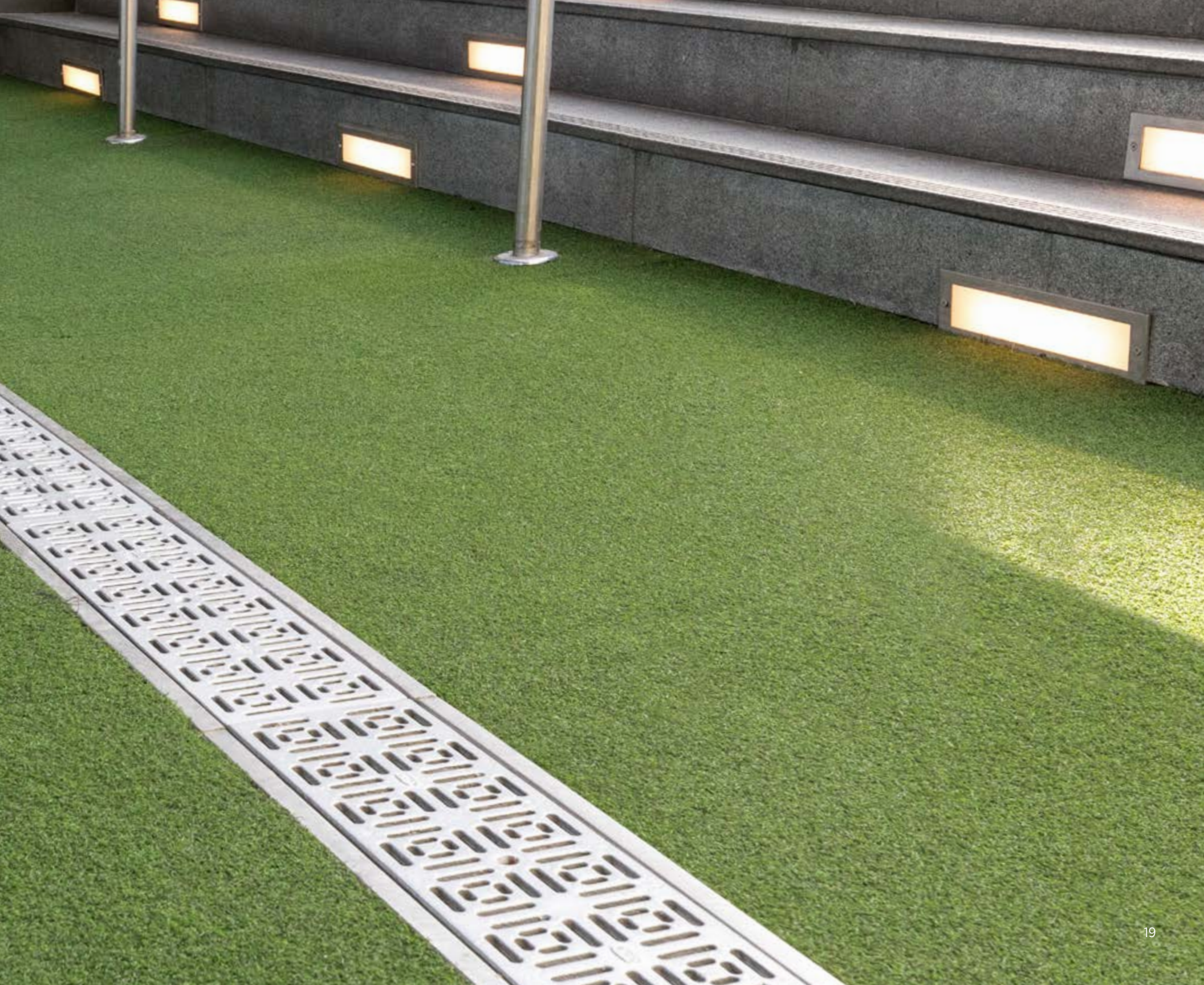
Sometimes customers simply want a solution that's heavy-duty and practical (skip the bells and whistles). This is it - our systems are ideal for high traffic applications from pedestrians to oversized jets.



We create system drawings that include the components contractors will need on the jobsite and take it one step further by offering instructions to guide them through the installation. That way, there's never a question in what they're getting from us or how to install it. We want to be a resource, as much as a solution.

BEN EICHLER

APPLICATION ENGINEERING MANAGER, ZURN





ZURN INDUSTRIES, LLC 511 West Freshwater Way, Milwaukee, WI 53204, 855.663.9876
In Canada: **ZURN INDUSTRIES LIMITED** 7900 Goreway Drive, Unit 10, Brampton, Ontario L6T 5W6, 905.405.8272
Form No. 220-057, 1/18



To learn more about our Trench Drain Systems, visit zurn.com



US 1.855.ONE.ZURN CANADA 1.905.405.8272 ZURN.COM