



**ZURN**® **ELKAY**®

# CONTRACTOR ADVANTAGE

Providing Innovative Whole Building Water Solutions

Roof Drains .....	4
Floor Drains .....	10
Trench Drains .....	14
Stainless Drains .....	16
Carriers.....	20
PHIX.....	26
Interceptors .....	27
Water Control and Backflow Preventers.....	30
Fire Protection.....	34
Finish Plumbing .....	36
Handwashing Systems .....	42
Drinking Water .....	44
Commercial Sinks.....	48
PEX .....	50
Smart Products .....	52



**ZURN ELKAY WATER SOLUTIONS IS THE RECOGNIZED LEADER IN PROVIDING HIGH-QUALITY, INNOVATIVE PRODUCTS WITHIN THE PLUMBING INDUSTRY.**

The products throughout this brochure feature our newest technologies, creating significant differentiation from the competition, and provide labor-saving advantages on projects to increase contractor profitability.

# ZURN® ROOF DRAINS

Optimized designs enhanced with the latest technology is why Zurn roof drains outperform the competition. They're engineered to meet code and are so effective that they can reduce the total number of roof drains needed. Find the widest range of roof drains in the industry for traditional, siphonic and specialty applications right here.

## THE CONTRACTOR ADVANTAGE

### BEST-IN-CLASS FLOW PERFORMANCE

The FloForce® parabolic body design and additional enhancements are engineered to evacuate water from the roof more efficiently.

### SIPHONIC SYSTEMS

Engineered siphonic systems can provide material savings and lower total installation costs. Available in Available in 3"-6" outlet sizes.

### BI-FUNCTIONAL

Combined primary and overflow drainage system eliminates half of the penetrations through the roof to save time in assembly, waterproofing and piping. Available in 2"-8" outlet sizes.



Z100F  
FloForce High Performance  
Roof Drain

## Zurn's FloForce technology

provides industry leading efficiency for gravity type roof drainage systems, **evacuating water faster and more effectively** than its predecessors

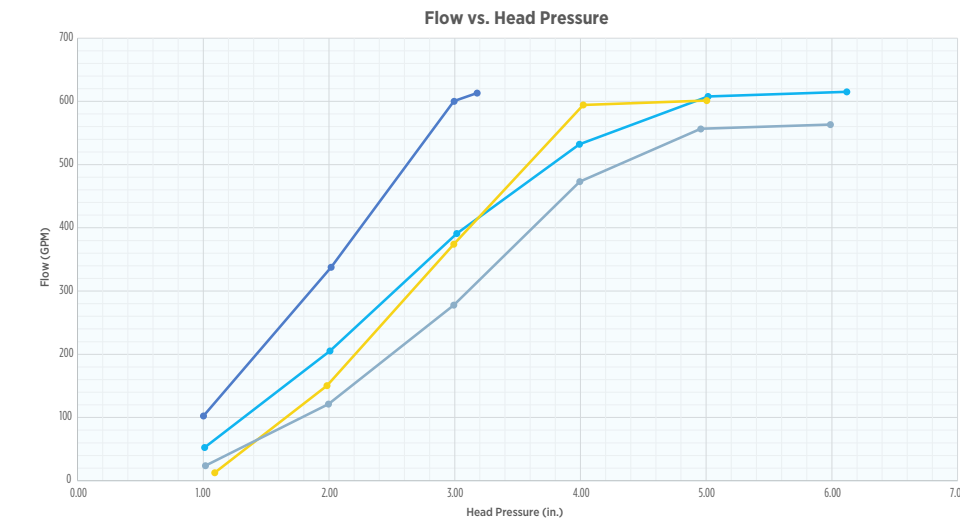
Discover how they work



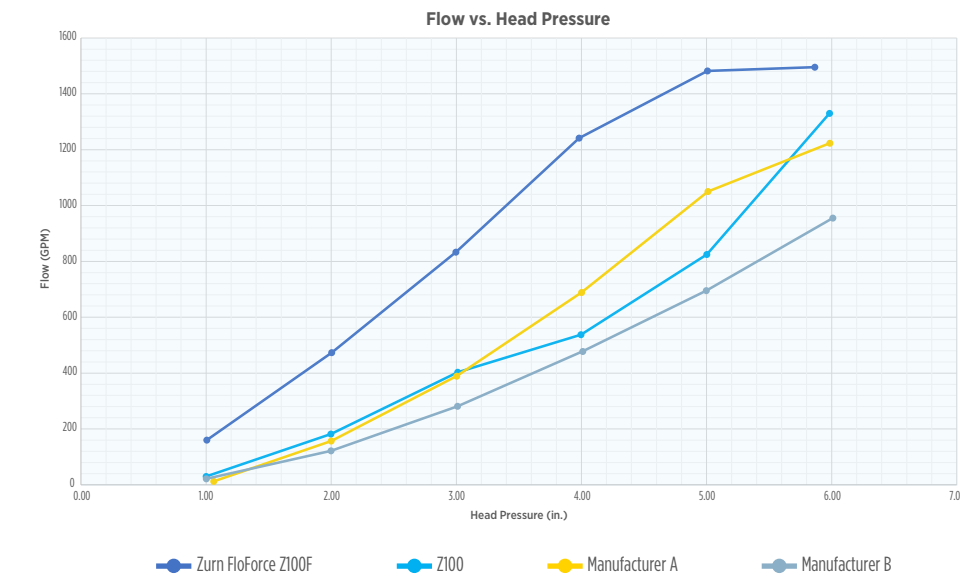
## Z100F FLOFORCE® ROOF DRAIN TESTING

Comparison performance flow testing of the Z100F FloForce High Performance Roof Drain against three various style roof drains, in 4" outlet and 6" outlet sizes.

### 4NH DATA SUMMARY



### 6NH DATA SUMMARY



# ROOF DRAINS

Zurn offers the greatest variety of roof drains to fit any application. For varying insulation depths, our drain with adjustable riser will simplify installation. A deck plate add-on can also reduce installation time without needing an underdeck clamp. Ideal for flat roofs, siphonic roof drains prevent air from entering the downpipes for faster draining. Here are some of our top drains and options.



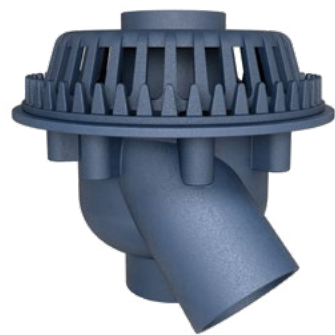
Z100F-DR  
Roof Drain With Non-wetted Drain Riser Extension Assembly



Z100F-DP  
Roof Drain With Top-set® Deck Plate

## THE CONTRACTOR ADVANTAGE

Using a Zurn top-set deck plate can save up to **25 min** per drain installation



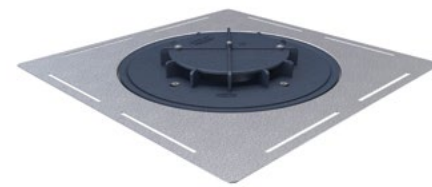
ZURN 100C Series  
Bi-functional Roof Drain



Z110  
Green Roof Drain



Z150F  
Prom Deck Drain



Z130S  
Siphonic Primary Roof Drain

# ROOF DRAIN ACCESSORIES: DOWNSPOUT NOZZLES



ZANB199-4IP  
Downspout Nozzle  
in Nickel Bronze  
(available in 2"-12" sizes)



ZARB199-4IP  
Downspout Nozzle  
in Rough Brass  
(available in 2"-12" sizes)



Z199-DC  
Downspout Cover  
(available in 3"-15" sizes)

## Chameleon Series

Zurn Chameleon Series downspout nozzles are manufactured from a cast-aluminum alloy and come powder-coated in five finishes designed to blend into common building exteriors. Each assembly is furnished with multiple gaskets to accommodate cast iron or PVC connections. Downspouts are available in 2", 3", 4", 6", 8", and 10" sizes.



ZF199-BW  
Downspout Nozzle  
in Bone White



ZF199-SAN  
Downspout Nozzle  
in Sandstone



ZF199-SGR  
Downspout Nozzle  
in Satin Gray



ZF199-MB  
Downspout Nozzle  
in Medium Bronze



ZF199-JB  
Downspout Nozzle  
in Jet Black

# SIPHONIC DRAINS

Let Zurn help you design the ideal siphonic drain system for your facility. Our non-sloping designs use smaller-diameter pipes than traditional gravity systems, providing building owners with more usable space. Zurn siphonic systems operate with 100% full-flow self-cleaning technology, increasing discharge with fewer drains and less space to lower the total cost of installation.

## THE CONTRACTOR ADVANTAGE

Reduce installation costs  
**by 65%**  
using smaller pipe diameter



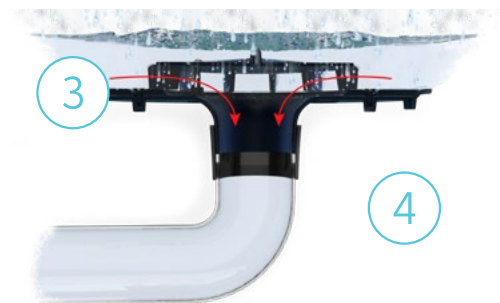
**Z130S**  
Siphonic Roof Drain



**Z131S**  
Siphonic Overflow Roof Drain

## How Siphonic Roof Drains Work

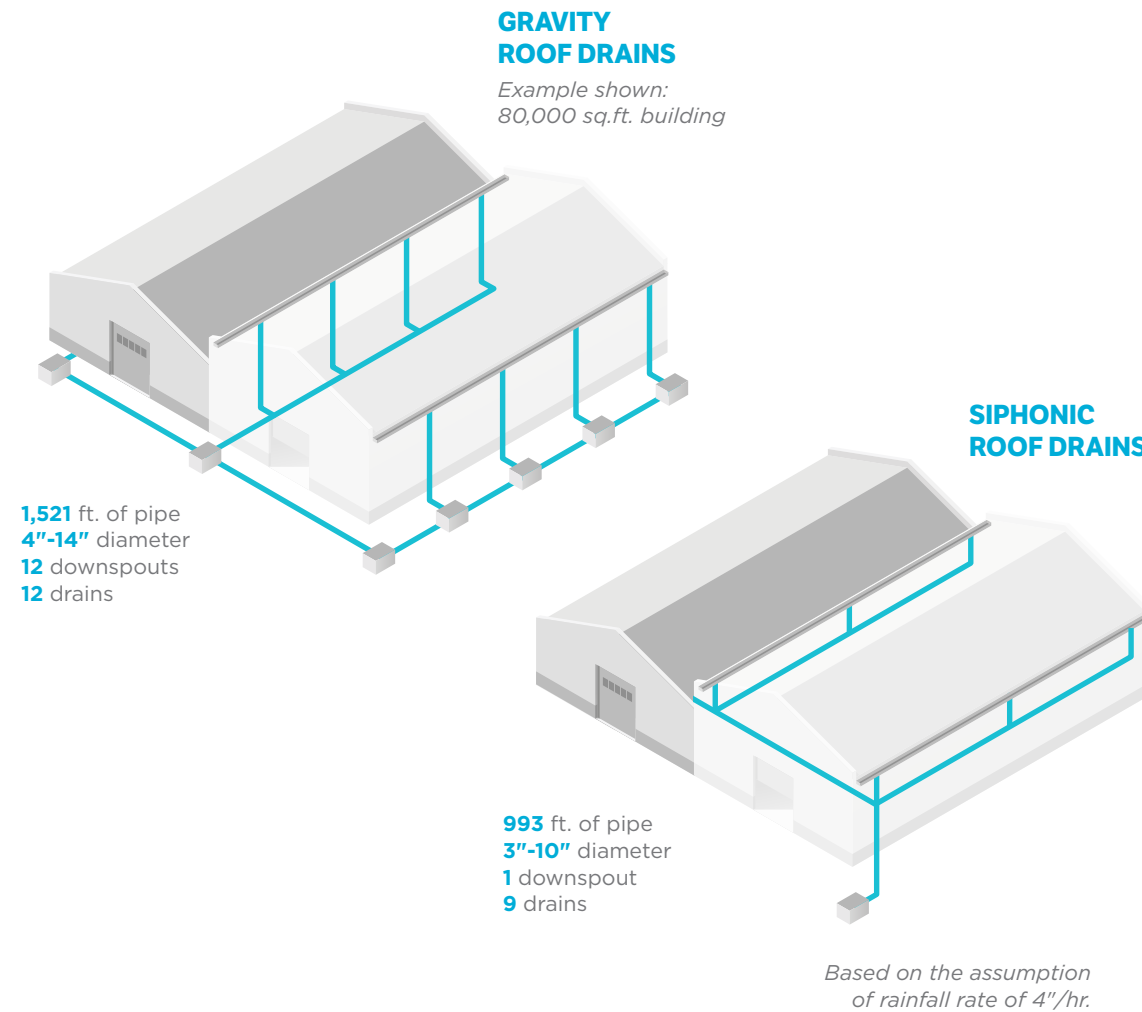
1. When not operating under siphonic conditions, the system will operate just like a gravity system.
2. Siphonic drainage is achieved by adding a highly engineered air baffle to an equally engineered drain body designed to minimize the friction coefficient of the drain.
3. The integral fins of the air baffle prevent vortex flow, while the solid baffle plate restricts air from entering the vertical tailpipe and horizontal collector piping.
4. With the absence of air, negative pressure pockets form, and water accelerates down the vertical pipework, creating and maintaining the siphonic action until the stormy weather conditions pass.



# THE ZURN DIFFERENCE

Zurn siphonic drains use non-sloped, horizontal piping that takes up less space because it runs right below the roof, improving efficiency over gravity drains. This design allows for flexible vertical stack placement based on individual architectural needs.

In a Zurn siphonic drain system, full-bore flow can occur with as little as 2 inches of water depth from the roof surface. Multiple drains can flow into a common horizontal collector pipe, which turns downward into a vertical downpipe and transitions to conventional gravity drainage. The location can be placed to suit design expectations on site.



## THE CONTRACTOR ADVANTAGE

### LOWER COSTS

Smaller pipes reduce building costs, while installation time is cut in half with integrated deck plates

### SUSTAINABLE

Earn LEED credits for materials, innovation, water efficiency, region priority and more.

### GREAT SERVICE

A personalized plan with consultation calls prior to install and to discuss alterations.

# ZURN FLOOR DRAINS

Contractors can save up to 14 minutes per installation with our BZ1/EZ1/SZ1 technology. Our versatile product offering provides cast iron and PVC assembly options with round or square tops, available in nickel bronze or stainless steel in a variety of sizes.

## THE CONTRACTOR ADVANTAGE

### ADJUSTABILITY

Industry-leading, post-pour adjustability allows you to raise, lower, or tilt-correct a drain from the elevation of the concrete pour.

### JOBSITE PROTECTION

3,000-lb.-rated construction cover and protective label eliminate the need for makeshift duct tape over the strainer, providing a hassle-free, finished installation.

### PREFAB FRIENDLY

Patented stabilizers facilitate a prefab opportunity and help secure drains in place prior to the pour, preventing accidental movement and minimizing potential rework.



Z415-5BZ1  
Cast Iron Floor Drain and Round Cover  
With Post-pour Adjustability



Z415-5SZ1  
Cast Iron Floor Drain and Square Cover  
With Post-pour Adjustability

Save over  
**14 min**  
per drain installation

See all the benefits of the EZ1 drain



## BZ1/SZ1 FLOOR DRAINS AND CLEANOUTS



Z415-BZ1-DP  
Floor and Shower Drain,  
Stainless Steel Deck Plate and Top Assembly



Z415-BZ1  
Floor and Shower Drain,  
With EZ1 Technology



Z415B-DP  
Deck Plate Drain

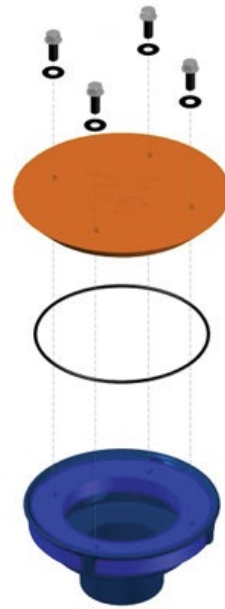


Z1400-BZ1  
DuraCoat, Cast Iron Cleanout  
With EZ1 Engineering

# FLOOR DRAIN AND CLEANOUT ACCESSORIES



P415-PROT-COVER  
Seal and Test Drain Cover



Z1072  
ZShield Floor Drain  
Barrier Trap Seal



NeoLoc-TC  
Gasket With Integral Test Cap  
(available in 2", 3", and 4" sizes)

# DRAIN AND CLEANOUT STABILIZERS

Zurn stabilizer systems secure drains to the stub-out, sub-floor or structural deck to prevent movement during the installation process. Prefab to the rough-in height and eliminate the need for drypack and grout to hold the drain in place and even eliminate adding fire stop in some applications.



- ① **Z1903** Floor sink stabilizer plate for use in sub-floor or structural deck installation
- ② **Z1903** Floor sink stabilizer plate for use in sub-floor or structural deck installation
- ③ **Z1036** Area drain stabilizer plate for use in sub-floor installation
- ④ **Z1035Q** Stabilizer plate for structural deck installation
- ⑤ **Z1035** Stabilizer plate for sub-floor installation
- ⑥ **Z1035** Stabilizer plate for sub-floor installation
- ⑦ **Z400-SR** Stabilizing ring for on-grade stub-out installation

## THE CONTRACTOR ADVANTAGE

Using a Zurn Z1035 stabilizer plate can save up to

**30 min**

per drain installation

# ZURN TRENCH DRAIN SYSTEMS

Eliminate jobsite complications with the easiest trench drains to install, built to your requirements. We have a trench drain for every application.

## THE CONTRACTOR ADVANTAGE

### SPEEDY INSTALLATION

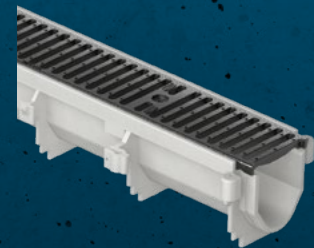
Longer, lightweight lengths, fewer joints and durable material make trench drains easier to handle and minimize jobsite damage — no heavy lifting or extra hands needed.

### DESIGN FLEXIBILITY

We provide the widest variety of material choices, sizes, and loading capabilities for ultimate flexibility in design.

### AT YOUR SERVICE

Zurn engineering provides layout drawings and design assistance for any application.



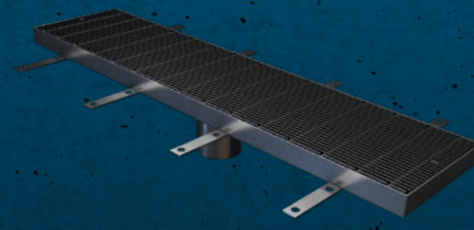
Z886  
Perma-Trench® Drain



ZF812  
Fiberglass Trench Drain



Z874-U  
Utility Trench Drain



Z899-100  
Elevator Drain

“

*We just finished a job with Zurn trench drains and couldn't be happier with the end result. The quality of the product and uncomplicated installation saved us 30% on labor costs compared to other trench drain systems.*

TONY WILLIARD PRESIDENT, TONY WILLIARD CONSTRUCTION

”

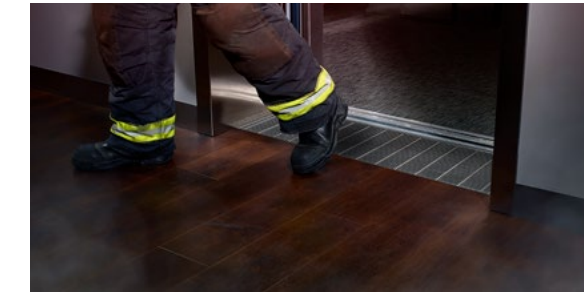
## TRENCH DRAINS

## Solutions for Every Project

No matter the application, we'll find a system that's fit for you and your customer.



Z880-BZ  
Bronze Decorative Grate



Z899-100  
Stainless Steel Elevator Trench Drain System



ZF812  
Fiber Reinforced Non-Combustible Polymer  
Trench Drain System With Steel Frame



ZS890  
Stainless Steel Trench Drain



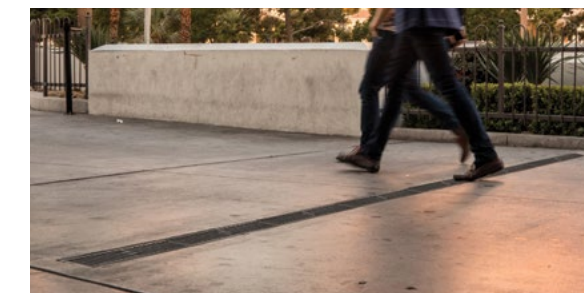
Z880-POG  
Heel-proof Polyethylene Grate



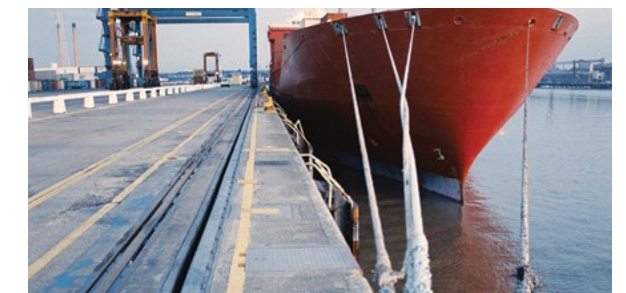
ZS880  
Tile Inlay Grate



Z888-12/18  
Hi-Cap® Drain System With Transition Piece



Z886  
Linear Trench Drain



Z874-12  
Perma-Trench HDPE Drain System



# ZURN STAINLESS STEEL DRAINS

Our new stainless steel drainage offering is designed with innovative labor-saving features to help your team finish the job on time and under budget.

## THE CONTRACTOR ADVANTAGE

### COMPLETE OFFERING

Our package includes a full line of cast or fabricated point-of-use and trench drains with a variety of grate options.

### CUSTOMIZED TO THE APPLICATION

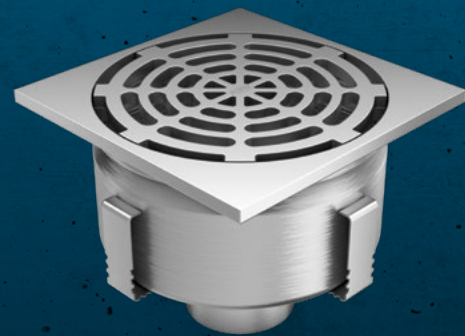
Outside of our standard product offering, we can customize our industrial drains for specialized applications.

### DOMESTIC MANUFACTURING

Our domestic manufacturing translates into shorter lead times for projects.



Z1805-12B  
Seamless Sanitary Floor Drain  
With Round Top



Z1805-12S  
Seamless Sanitary Floor Drain  
With Square Top

Ask us about our  
**Z1805 spun-body,  
seamless sanitary  
floor drain**

*Multiple configurations available for versatility and durability*

Watch how these drains have helped Four Day Ray Brewing



# STAINLESS STEEL DRAINS

There's a stainless steel floor drain for every application, including health care, food and beverage and industrial.

## THE CONTRACTOR ADVANTAGE

Zurn floor sink liners  
can be installed in

**15 min**

vs. having to reglaze  
or remove and replace,  
which could take days



Z1901-RL  
Replacement Floor Sink Liner

- Z1900-RL 12" x 12" x 6"
- Z1901-RL 12" x 12" x 8"
- Z1902-RL 12" x 12" x 10"
- Z1910-RL 8" x 8" x 6"



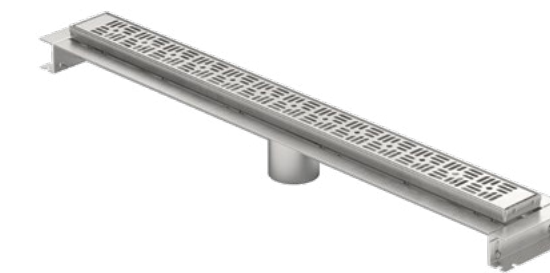
Z1890  
Stainless Steel P-trap



Z1800  
Industrial Floor Drain



ZS880  
Stainless Steel Shower Drain



Z890  
Stainless Steel Linear Trench Drain  
Longer lengths means fewer joints,  
resulting in labor savings.

# ZPD1 POINT DRAIN AND ZPT1 LINEAR DRAIN

Zurn's ZPD1 point drain and ZPT1 linear drain are both ideal for POD or modular construction and shallow floor applications due to their 7/8" overall assembly height and our patented "drop-in" outlet technology.

Visit [zurn.com](http://zurn.com) to learn more about ZPD1 point drains

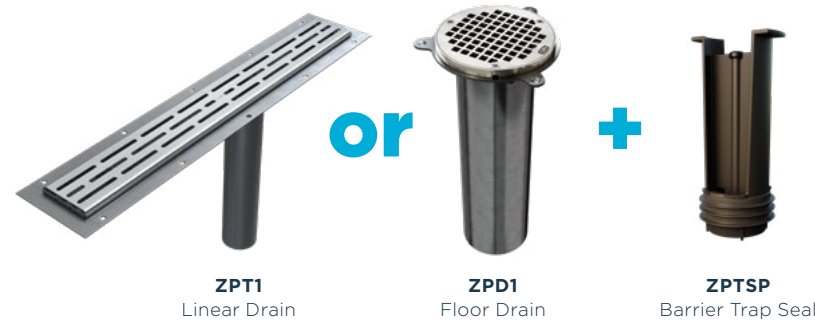


Stainless Steel Body Assemblies available in 2" and 3" no-hub outlet types with 5" and 6" round or square nickel bronze or stainless steel tops

ZPT1 IS AVAILABLE IN SEVEN STANDARD LENGTHS, RANGING FROM 24" TO 60", AND FIVE DECORATIVE GRATE OPTIONS.



-LS Slotted Grate



Prefab Ready. Reliable Performance.

Visit [zurn.com](http://zurn.com) to learn more about ZPT1 linear drains



# ZPWC1 POD PRO STUD SUPPORTED WATER CLOSET CARRIER

Ideal for health care and hospitality environments, the ZPWC1 POD Pro carrier takes up minimal space and eliminates the need for additional labor and support materials during installation. Seven fitting options are available, which attach to the carrier from behind the wall, and the universal faceplate can be used to accommodate wall mount or floor mount back outlet fixtures.



ZPWC1-NR4  
ZPWC1 POD Pro Stud Supported Water Closet Carrier with 4" No-Hub Right Hand Horizontal Cast Iron Fitting



-NL4  
4" No-Hub Left Hand Horizontal Cast Iron Fitting

-NR4  
4" No-Hub Right Hand Horizontal Cast Iron Fitting

-NV4  
4" No-Hub Vertical Cast Iron Fitting

-CI3  
3" No-Hub Vertical Cast Iron Adapter

-CI4  
4" No-Hub Vertical Cast Iron Adapter

-PV3  
3" Solvent Weld Universal PVC Adapter

-PV4  
4" Solvent Weld Universal PVC Adapter

## THE CONTRACTOR ADVANTAGE

### SMALL FOOTPRINT

The compact design of the ZPWC1 is our narrowest chase offering, providing more room.

### SECURE TRANSPORT

Uniquely secures to wall studs and fits within the POD prior to shipping, preventing damage during transport and delivery.

Watch how to assemble this product



# ZURN CARRIERS

Get industry-leading carrier innovation from Zurn — with superior line carry, labor-saving accessories and a variety of leg designs to meet the needs of any prefab method.

## THE CONTRACTOR ADVANTAGE

### DURABILITY

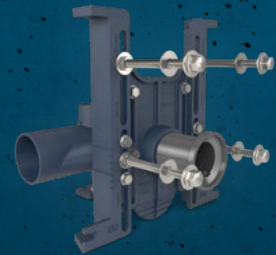
Standard load rating up to 500 lbs. with ability to meet 750 lb. or 1,000 lb. load-rating requirements.

### HIGH PERFORMANCE

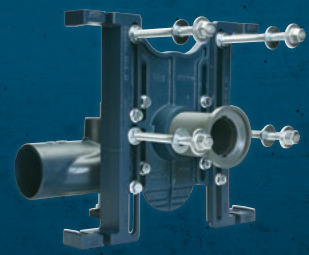
3" coupling technology and optimized fitting sweep provide best-in-class line carry.

### EASY INSTALLATION

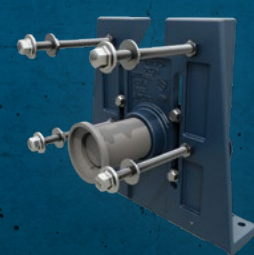
Optional add-on accessories and tools streamline the assembly and installation process.



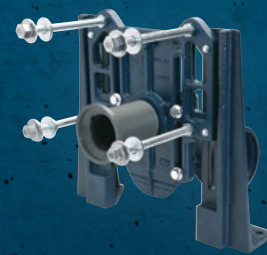
Z1201-N\_4  
Standard Installation  
and Angle Iron Framing



Z1201-N\_4-RYK17  
Unistrut Framing



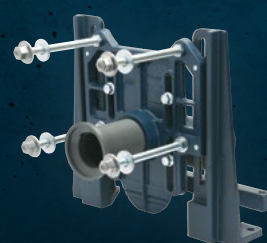
ZF1201-N\_4-U  
Universal Prefab Carrier



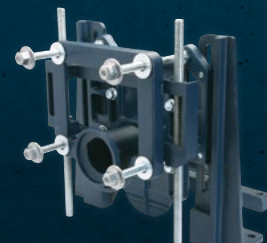
ZN1201-N\_4  
Narrow Wall Applications



Z1201-N\_4-FMBO  
Floor Mounted Back Outlet



Z1201-N\_4-XH  
Extra Heavy-duty Applications  
(750-lb. rating)



Z1201-N\_4-XB  
Bariatric Applications  
(1,000-lb. rating)

# EVOLUTION OF ZURN CARRIER PERFORMANCE

## Sweep Optimization

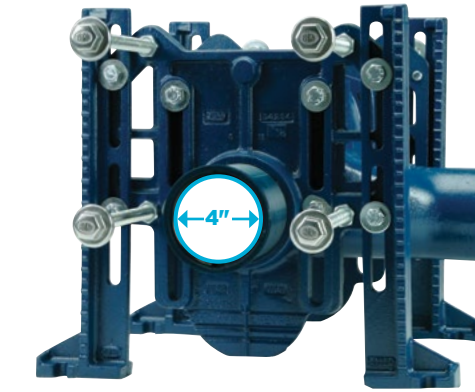
The engine behind innovation.



Traditional Z1203 Series



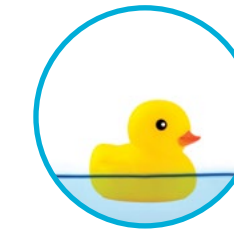
New Z1201 Series



4", Traditional Z1203 Series



3", New Z1201 Series

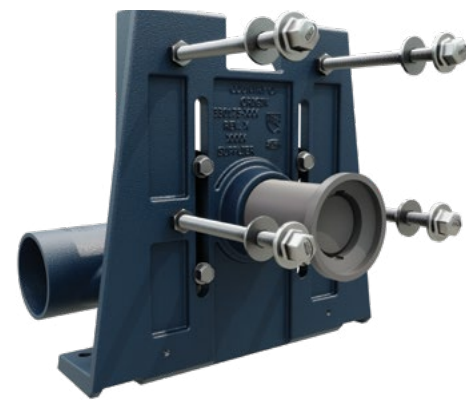


## Industry-leading Line Carry

Transitioning from the traditional 4"-diameter coupling to a new 3"-diameter coupling maintains the slug of water delivered by the flush valve through the carrier system. This directs waste downstream with a more substantial bed of water beneath it, providing Zurn's industry-leading line carry.

# ZF1201-U ONE-PIECE FACEPLATE CARRIER SYSTEM

Prefabrication is easier, safer and more cost-effective with the ZF1201-U one-piece faceplate, due to its cutting-edge design that supports multiple installation types.



ZF1201-U  
One-piece Faceplate Carrier System

**20-25%**  
less assembly time  
with the ZF1201 series



Strut Bank Installation



Angle Iron Installation

Learn more about it



# Z1231EZ UNIVERSAL LAVATORY CARRIER

Universal arms

Bracket system for independent  
horizontal/vertical adjustment

OSHPD-compliant  
foot design

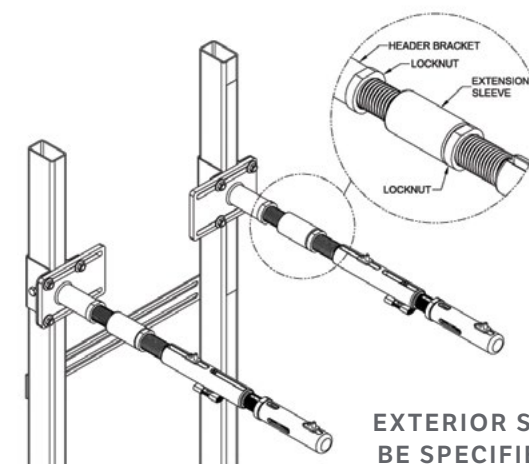
Z1231EZ-15-UN-42-WL  
Universal Lavatory Carrier

250-lb. load rating

2" side-to-side  
post anchor  
adjustability  
(allows for rough-ins  
between 13"-21" centers)

Our patented -WL waste line sleeve option  
allows for a 2" pipe pass-through

Two foot  
anchors



EXTERIOR SLEEVE EXTENSIONS CAN  
BE SPECIFIED FOR BEHIND-STUD OR  
BLOCK-WALL APPLICATIONS

Offset diagonal bolt pattern allows for two  
3/8" or two 1/2" anchors per leg

## THE CONTRACTOR ADVANTAGE

### SIMPLIFIES SPECIFICATION

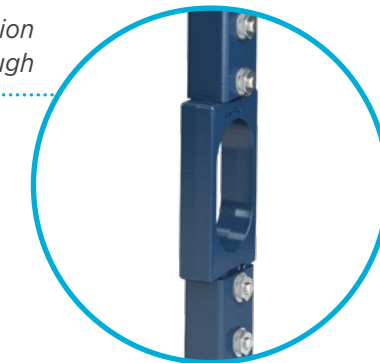
Featuring 42-in. upright, side-to-side adjustable header plates and universal telescoping arms, the Z1231EZ can be positioned to fit most lavatories.

### EASY TWO-STEP INSTALLATION

Install pre-assembled carrier to concrete with fewer anchors than traditional carriers. Then, configure arm length and hardware positioning to the specific lavatory.

### DURABILITY

Fully compliant to ASME A112.6.1 standards with a 250-lb. load rating.



Get a closer look



# LAVATORY AND URINAL CARRIERS



Z1231-CB  
Custom-made Carrier Banks  
for Both Lavatories and Urinals

## THE CONTRACTOR ADVANTAGE

Lavatory and urinal banks  
**save 30-50%**  
installation time



Z1224-EZ  
Universal Bracket Mount  
Lavatory Carrier



Z1222-EZ  
Universal Urinal Carrier



Urinal Adaptor  
-UA Option

# CARRIER ACCESSORIES



ZE1201-NR4  
38" Extended Barrel Fittings



Z1200-OFL/OFR  
1-1/2" Horizontal Offset Fitting



EZ-Set Coupling  
Available in NPT or NPSM Connection



EZ Cut Guide



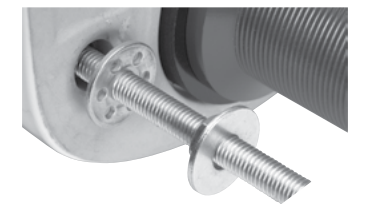
Z1201 Coupling Wrench



Z1200-FINFRAME-SJ  
Finishing Frame



Z5610-NUT-EXT-KIT  
Retrofit Extension Nuts



Z1200-ADJ-NUT  
Flush Wall Adjustment Nut/Washer

# ZURN PHIX ACID NEUTRALIZATION

Neutralize acid at point of use more safely and effectively using our PHIX cartridge. Its compact design fits conveniently under the sink within any application, new or retrofit, taking the place of traditional acid waste systems, such as limestone.

## THE CONTRACTOR ADVANTAGE

### LOW MAINTENANCE AND COST

Reduced labor and maintenance keep costs down compared to traditional acid neutralization systems.

### LESS SPACE, FEWER PARTS

Compact design fits conveniently under the sink, even in tight configurations.

### RELIABLE, LONG LASTING

10-year warranty and NSF international standards adherence ensure lasting performance.



System installed in  
**15 min**

Potential savings:  
**\$28K+**

*\*Based on one 10-sink case study*

Watch the Fort Worth  
ISD case study



# ZURN INTERCEPTORS

Zurn Green Turtle interceptors come in ranging capacities and feature corrosion-resistant construction. We offer custom configurations for differing applications, such as above-ground installs, double systems, parking garages, zero lot line conditions, etc.

## THE CONTRACTOR ADVANTAGE

### A COMPLETE SOLUTION

Our FOG, solids, and oil interceptors offer the widest range of product in the industry.

### SOLUTIONS FOR EVERY PROJECT

Customizable configurations help meet your project specifications.

### SAVES TIME AND RESOURCES

Simple installation reduces total installation cost and eliminates the need for callbacks.

Certifications:



Proceptor® GMC UPC  
Gravity Grease Interceptor, 2 Manway

Manufacturer's  
**lifetime warranty**  
on Zurn Green Turtle interceptors

Explore all interceptors  
at [zurn.com](http://zurn.com)



# FOG-CEPTOR® SERIES

Our fats, oil and grease series of interceptors are engineered for flexible installation, such as free standing, above ground, inside, outside, direct burial in landscape or H-20 traffic-rated areas, high water table regions and custom applications. This agile design eliminates the need for concrete deadmen anchors and cumbersome strapdown systems.



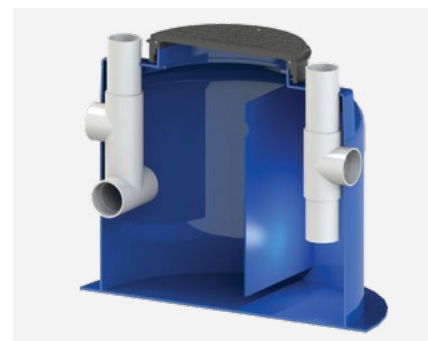
Z250H  
FOG-ceptor  
Hydromechanical Interceptor



Z75H



Z50H



## Go With the Flow Rate

Why install a one-size-fits-all, when you can install an interceptor that truly fits the business? Find a FOG-ceptor to handle the flow rate of the operation.

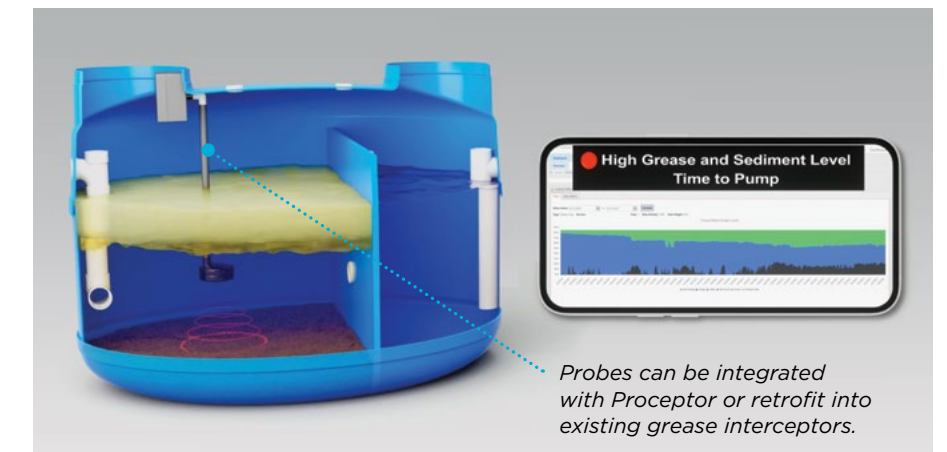
FOG-CEPTOR	FLOW RATE
Z50H	50 GPM
Z75H	75 GPM
Z250H and Z250H-MD	100 GPM

# SMARTPRO™ MONITORING SYSTEM

Our SmartPro grease interceptor monitoring helps customers minimize risk, ensure compliance and reduce costs by preventing unnecessary pumping. Install this wireless monitoring system for long-term benefits.



- Pump **Only** When Needed
- Multiple Programmable **Alerts**
- Wastewater Backup **Monitoring**
- **Clog-free** Sensors
- Typical **3 Year or Less** ROI



# ZURN WILKINS WATER CONTROL AND BACKFLOW PREVENTION

The Zurn Wilkins time-tested portfolio of backflow preventers, automatic control valves, pressure reducing valves, thermostatic mixing valves, strainers and more can reduce time and costs associated with installation, maintenance and repairs. Save your clients money with quality products that don't sacrifice the bottom line.

## THE CONTRACTOR ADVANTAGE

### PROVEN RELIABILITY

Innovative product solutions minimize repairs and extend the life of the product.

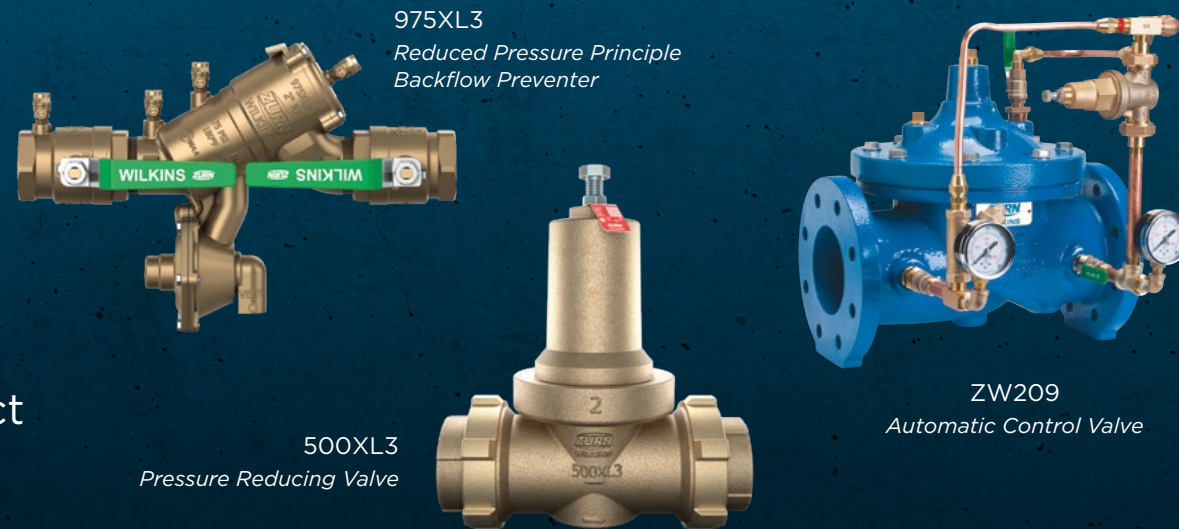
### EASY MAINTENANCE

Most wear items have quick, swap-out designs for easier, cost-effective maintenance and lowest total cost-of-valve ownership.

### FULL COMPLIANCE

Time-tested products exceed industry compliance standards, which gives clients peace of mind.

Universal repair kits and easy maintenance can **save 75%** on labor and repair kit costs over the lifecycle of the product



975XL3  
Reduced Pressure Principle  
Backflow Preventer

500XL3  
Pressure Reducing Valve

ZW209  
Automatic Control Valve

Explore more products at [zurn.com/products/water-control](http://zurn.com/products/water-control)

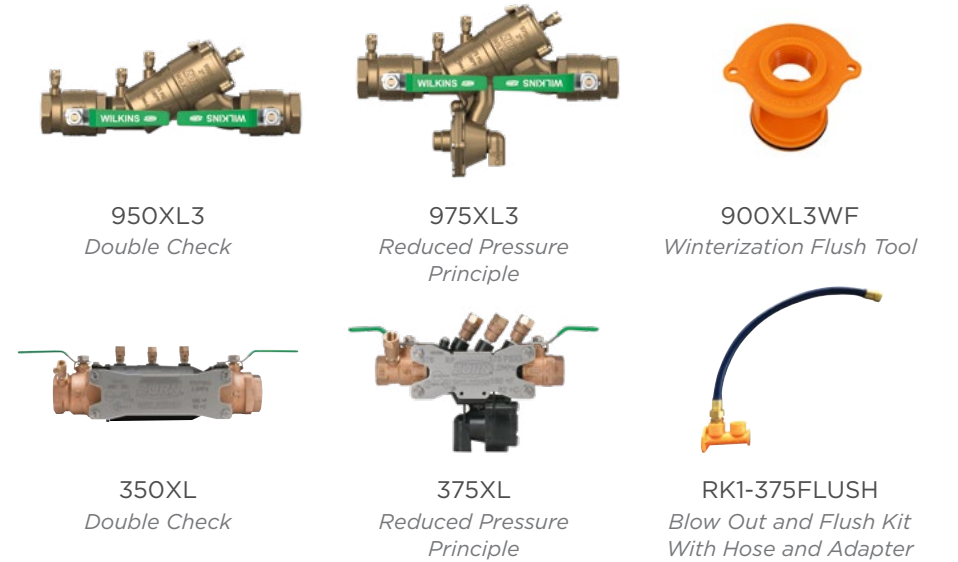


## BACKFLOW PREVENTION ASSEMBLIES

Zurn Wilkins backflow prevention assemblies are specially configured to protect against backsiphonage and backpressure. Valves are designed for use in low- or high-hazard applications — you can find every level of protection with Zurn Wilkins backflow preventers.

### Small Backflow Preventers

The 900XL3 series of backflow preventers are easier to install and repair with a short lay length and modular checks, featuring top access for faster valve repairs — under 15 minutes. Available in 1/2"-2".



950XL3  
Double Check

975XL3  
Reduced Pressure  
Principle

900XL3WF  
Winterization Flush Tool

The 300XL series of backflow preventers feature a high-strength, engineered polymer composite body with modular checks for safe and easy line flushing, quick winterization, and simple maintenance. Available in 1/2"-2".



350XL  
Double Check

375XL  
Reduced Pressure  
Principle

RK1-375FLUSH  
Blow Out and Flush Kit  
With Hose and Adapter

### Large Backflow Preventers

The 300AST series of large backflow preventers provides protection with a corrosion-resistant, stainless steel body design. Multiple shutoff and end connections are available for installation versatility. Patented compound check offers reliable sealing for superior longevity and flow performance. Available in 2-1/2"-10".



375AST  
Stainless Steel Reduced Pressure Principle

375ASTR  
Stainless Steel RP With Retrofit Spool Piece  
for drop-in replacements that retain agency  
approval at custom lengths

475STV  
Stainless Steel RP Vertical  
Maintain performance in tighter spaces using  
our n-pattern 400ST series valves.



# ZURN WILKINS PRESSURE REDUCING VALVES

Get the highest flow rates and reliable performance from the Zurn 500XL3 and 600XL3 pressure reducing valves. No other direct-acting pressure reducing valve handles such high flow rates for industrial water lines and commercial systems. With the flattest flow curve on the market today from the patented venturi technology, this valve leads in performance.

## THE CONTRACTOR ADVANTAGE

### HIGHEST FLOW RATES OF ANY PRV

The 500XL3 and 600XL3 have a low loss of pressure at common operating flow rates, making it an acceptable substitute for small ACVs in many applications and reducing callbacks due to low pressure complaints..

### DROP-IN INSTALLATION

Short lay length and compact design fits most applications and simplifies installation.

### DURABILITY CUSTOMERS APPRECIATE

All-bronze body and bell construction provide enduring strength, while the stainless steel stem and composite cartridge internals resist corrosion to extend the valve's lifespan.

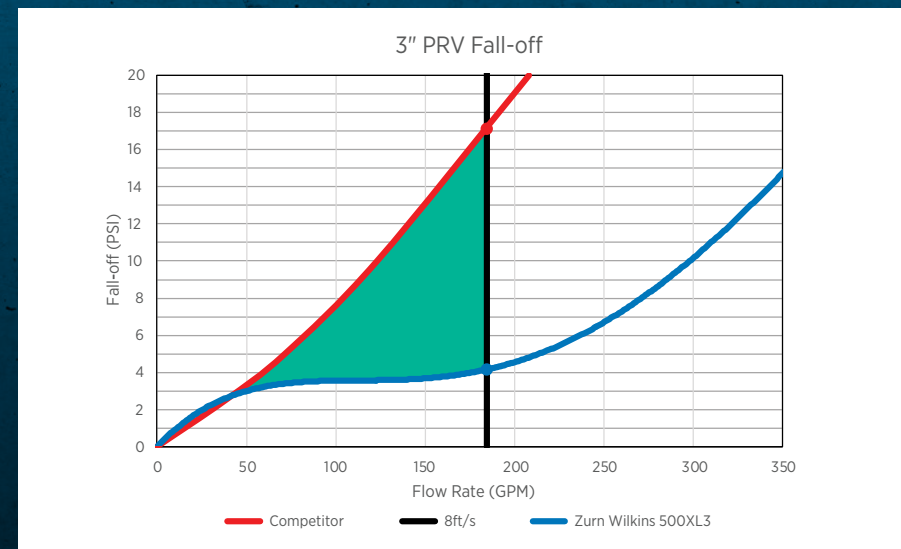


500XL3  
Pressure Reducing Valve



500XL3BPK  
Bypass Kit

**FLAT-OUT BEST IN FLOW** 500XL3 has a 13 PSI pressure advantage



Learn more about this lightest valve on the market



## PRESSURE REDUCING VALVES

Safely reduce high inlet pressure to lower outlet pressure with Zurn Wilkins pressure reducing valves, available in 1/2"-4" sizes with multiple end connection options for commercial, industrial and residential applications. Lowering outlet pressure can drastically decrease water consumption, lowering water bills.



500XL3



600XL3



625XL3



NR3XL



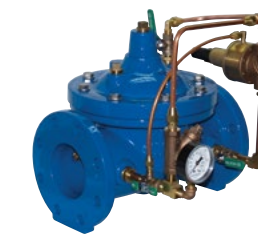
20XL

## AUTOMATIC CONTROL VALVES

Zurn automatic control valves are designed to react to changing pressure situations, ensuring a constant downstream set pressure. The most popular upgrade options come standard and these valves are easier to install and maintain. We made the most popular upgrade options standard and easier to install and maintain.



ZW209  
Pressure Reducing Valve



ZW205  
Pressure Relief/Sustaining Valve



ZW206  
Solenoid Control Valve



ZW204  
Non-modulating Float Valve



ZW207  
Excess Pressure Shutdown Valve



ZW218  
Slow-closed Check Valve

# ZURN WILKINS FIRE PROTECTION

Zurn Wilkins fire protection products are UL listed and technologically advanced backflow preventers, automatic control valves, and fire valves work together to provide reliable performance with the lowest lifetime cost. Save time with installation and offer peace of mind long after.

## THE CONTRACTOR ADVANTAGE

### GET EVERYTHING FROM ONE SOURCE

With the most comprehensive offering on the market, complete your project in one stop, and get dedicated support from start to finish.

### RETROFIT READY

Versatile design is compatible with all new applications and can also be retrofitted to existing ones for your upgrading convenience.

### MEET SPEC NO MATTER WHAT

High-performing backflow preventers and pressure reducing valves deliver the widest range of adjustability for your required pressure specifications.

Only 9-ft lb torque needed;  
**40%**  
easier to adjust than  
the competitor's set



ZW5000 Series  
*Pressure Tru® Field Adjustable Pressure Reducing Hose Valve is the easiest valve to change pressure settings in the field while staying accurate and true.*

See all the benefits of the ZW5000 Pressure Tru valve



# FIRE PROTECTION PRODUCTS

Zurn offers a complete line of products for fire protection applications.



475ST  
*N-pattern Direct Drop-in Replacement Backflow Preventer*



ZW5000  
*Field Adjustable Fire Valve*



ZW5004  
*Field Adjustable Fire Valve With Supervisory Switches*



ZW209FP  
*Fire Protection Pressure Reducing Valve*



400ST  
*Valve Setters*



F48OSY  
*Untapped OS&Y Gate Valve*



Full Line of Grooved  
Couplings and Fittings



F210R  
*Riser Check*



WBR  
*Grooved and Flanged Outlet In-building Risers*

# ZURN FINISH PLUMBING

Choose from one of our top preconfigured packages or use the Zurn One Systems configurator to build your urinal, toilet or lavatory system to meet the exact specifications of your project. Zurn One Systems combine complementary carriers, flush valves, faucets, and fixtures together to create a seamless water-efficient solution. All systems are packaged, palletized, and labeled per your specifications to streamline material handling and installation labor.

## THE CONTRACTOR ADVANTAGE

### ONE ORGANIZED PACKAGE

All parts, accessories, and fixtures come in one box to eliminate multiple shipments and reduce the risk of jobsite delays.

### ONE SOURCE FOR EVERYTHING

Build your ideal package from a complete line of compatible plumbing products through a single point of contact.

### PAIRED PERFORMANCE

A Zurn One System means that the products are designed to work optimally together, consistently providing ideal performance.



Z.WC1.S.HYD  
Zurn One System for Water Closet with  
ZER6000AV-ONE-HYD Sensor Flush Valve



Use the Zurn One Systems  
carrier for optimal performance

Zurn One System's  
**3-year warranty**  
is our way of delivering our  
promise with every package

Learn more and download specs  
for Zurn One Systems at [Zurn.com](http://Zurn.com)



## ZURN ONE SYSTEMS

The Zurn One packout is available in the following examples, which can be configured to meet the requirements of your specification. Shown below are several examples of popular Zurn One System configurations.



Z.WC1.S.TM  
Water Closet With  
Sensor Flush Valve



Z.WC1.M  
Water Closet With  
Manual Flush Valve



Z.UR1.S.TM  
Urinal With  
Sensor Flush Valve



Z.UR1.M  
Urinal With  
Manual Flush Valve



Z.L1.S  
Lavatory With  
Sensor Faucet



Z.L1.M  
Lavatory With  
Manual Faucet



Water closet and accessories



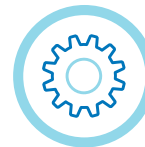
Trim accessories packaged within inner box  
to protect water closet fixture



Final packout for water closet  
and brass trim accessories

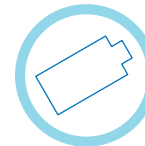
# ZURN TOTAL RESTROOM SOLUTIONS WITH HYDRO•X POWER®

Zurn's Hydro•X Power® flush valves and faucets deliver the winning combination of a gear-driven ceramic cartridge and hydropower for a superior restroom experience. We offer a complete line of innovative and sustainable solutions engineered to deliver on performance and help your clients meet sustainability goals. Our next-level smart products add efficiencies in today's workforce.



## EZ Gear Technology

*Solenoid free, gear-driven ceramic cartridge withstands debris and build-up for less downtime and easy maintenance.*



## Hydro•X Power®

*The water flowing through the fixture creates sustainable performance with renewable, uninterrupted hydropower without the need for constant battery replacements or costly hardwiring.*



## THE CONTRACTOR ADVANTAGE

### SUSTAINABLE PERFORMANCE

Hydro•X Power provides uninterrupted performance without the need for hardwiring.

### SEAMLESS JOBSITE DELIVERY

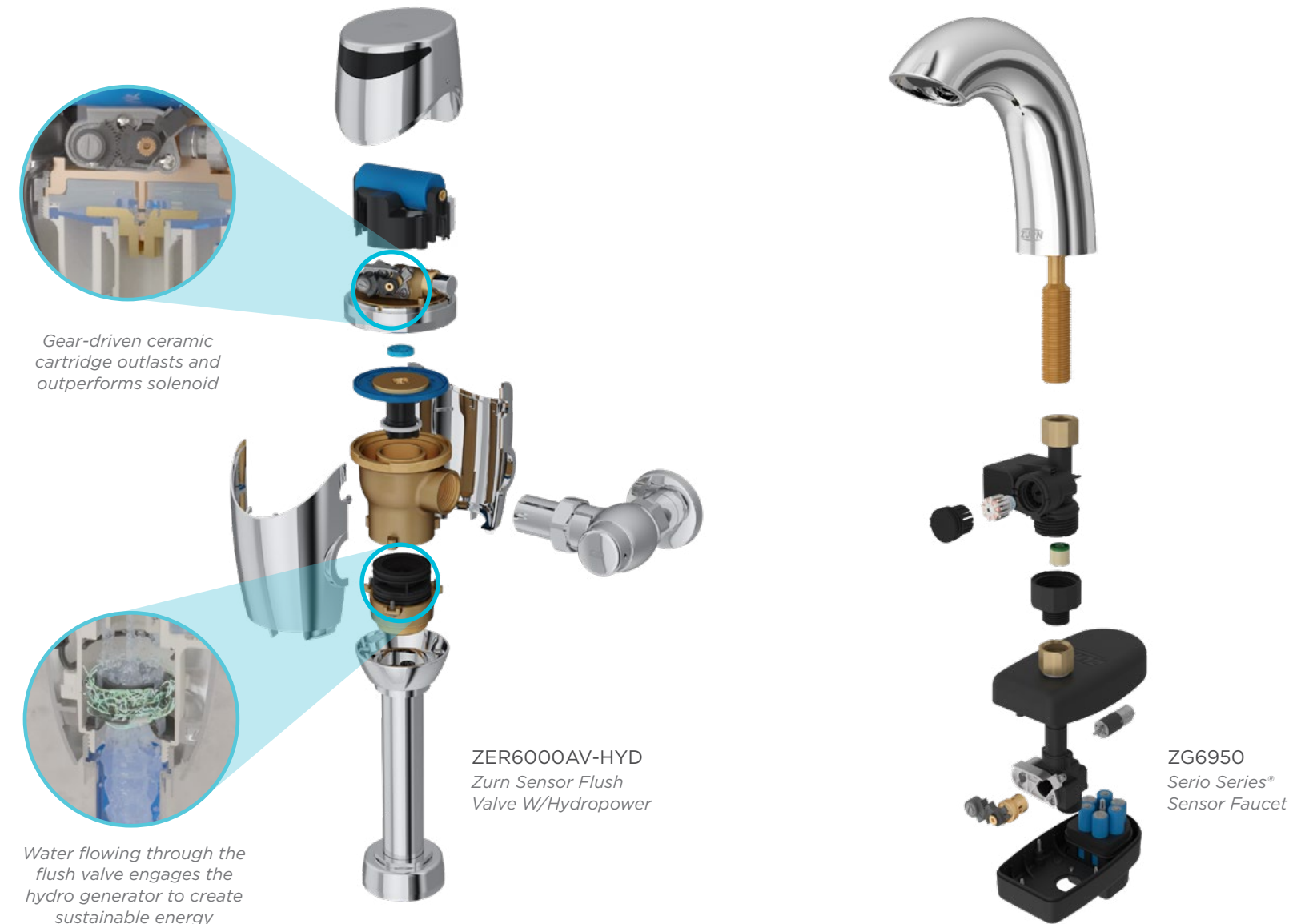
Our Zurn One program offers products and accessories that work seamlessly to solve jobsite challenges, all shipped in an organized package.

### NO SOLENOIDS, NO PROBLEMS

Solenoid-free ceramic cartridge technology combined with our industry-leading filtered diaphragm withstands the harshest water conditions.



# ZURN TOTAL RESTROOM SOLUTIONS WITH HYDRO•X POWER



# ZURN SENSOR FLUSH VALVES WITH GEAR-DRIVEN CERAMIC CARTRIDGE

The EZ Gear technology inside our sensor flush valves deliver reliability, precision, and efficiency to any commercial restroom. Thanks to the dual action of the ceramic disc cartridge and motor gear-driven operation, they outperform and outlast other models. They intuitively sense the user without delay or wasting water. Get EZ Gear technology plus a mechanical manual override button from our top mount sensor flush valves, available as retrofit, battery-operated and hardwired models.

NO SOLENOID  
**count on it lasting**



Ceramic Disc Cartridge



Sensor Detection



Brass Body



Gear Driven

## THE CONTRACTOR ADVANTAGE

### LASTING PERFORMANCE

Ceramic disc cartridge eliminates old actuation technology and contains fewer moving parts keep the pathway uninterrupted.

### PRECISION

Sensor detects user without delay, optimizing time and water delivery.

### EFFICIENT AND SUSTAINABLE

Lead-free design and low flow rates make these flush valves environmentally responsible, conserving water and saving money.



ZERK-TM  
Top Mount Sensor  
Flush Valve Retrofit Kit



ZERK-SM  
Side Mount Sensor  
Flush Valve Retrofit Kit

Learn more about our Zurn sensor flush valves with EZ Gear



# ZURN SENSOR FAUCETS WITH GEAR-DRIVEN CERAMIC CARTRIDGE

Zurn EZ Gear technology offers a more compact design for cleaner overall installation and increased reliability over traditional solenoid activation.



Hydro-X Power  
Technology



AquaSpec® Ceramic Disc  
Technology



No Solenoid



No Unplanned Downtime  
Minimizes waste and downtime with uninterrupted power supplied for the life of the restroom.



Easy Maintenance  
Gear-driven ceramic cartridge is less susceptible to debris and buildup than solenoids.



Simplified Install  
Reduces upfront costs typically required for high-use applications.



ZG6950  
Serio Series®  
Sensor Faucet



ZG6951  
Fulmer Series®  
Sensor Faucet



ZG6953  
Camaya Series®  
Sensor Faucet



ZG6956  
Cumberland Series®  
Sensor Faucet



ZG6915  
AquaSense®  
Sensor Faucet

## THE CONTRACTOR ADVANTAGE

### EASILY ADAPTABLE

May be field configured for sensing or metering distribution.

### RELIABLE DESIGN

Self-cleaning ceramic cartridge actuation reduces corrosion buildup for hassle-free use.

### MINIMAL MAINTENANCE

Long-life batteries paired with our Hydro-X generator provide industry-leading, maintenance-free longevity.

# ZURN SUNDARA® HANDWASHING SYSTEMS

Influenced by architects and crafted by industrial designers, Sundara simplifies your job by offering a curated selection of countertops, basins, faucets, and soap dispensers to mix and match.

## THE CONTRACTOR ADVANTAGE

### REDUCED UNPACKING TIME

All components come in one package, reducing material handling time on the jobsite.

### INTEGRATED SYSTEM

Integrated rough-in and finished package provides unmatched strength and stability you expect and the finish desired. We're the only manufacturer to offer a carrier system for solid surface.

### INDUSTRY-LEADING WARRANTY

Optimal performance and an extended warranty surpass the industry standard, which provide peace of mind to your customer.

## SUNDARA HANDWASHING SYSTEM

Meet specifications for any project with the handwashing system that comes in a wide range of configurations.



*Serio Series Sensor  
Faucet and Soap Dispenser*



*Fulmer Series Sensor  
Faucet and Soap Dispenser*



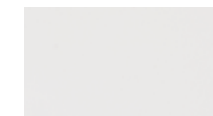
*Camaya Series Sensor  
Faucet and Soap Dispenser*



*Cumberland Series Sensor  
Faucet and Soap Dispenser*



*Nachi Series Sensor  
Faucet and Soap Dispenser*



White



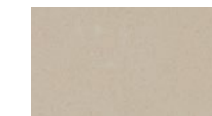
Snow



Sea Shell



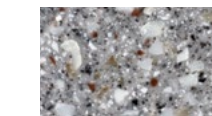
Alluvium



Sand Storm



Highcliffe



Frost



Z5001  
*Sundara Reef*



Z5003  
*Sundara Drift*



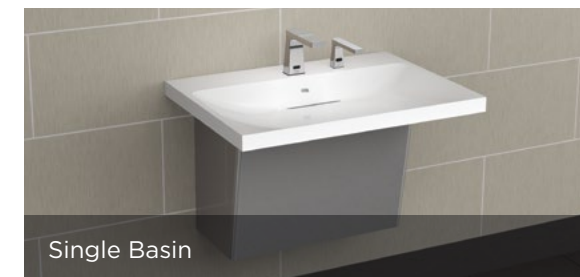
Z5004  
*Sundara Surf*



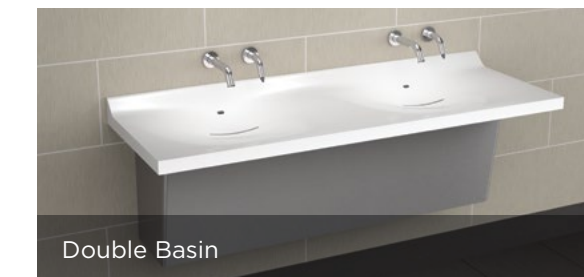
Z5005  
*Sundara Inlet*



Z5006  
*Sundara Tide*



Single Basin



Double Basin



Triple Basin

Discover the many benefits of Sundara



# ELKAY® BOTTLE FILLING STATIONS AND WATER DISPENSERS

Specifying filtered drinking water upgrades is more efficient with our readily available products and retrofit options that simplify installation. There are in-wall, on-wall, and floor-standing options, and our ezH2O Liv® Pro water dispenser installs within 16" OC 2" X 4" studs. All filtered drinking solutions include a filter that is tested and certified to NSF/ANSI 42, 53 and 401. All our bottle filling station and water dispensers minimize single-use, disposable plastic bottle waste to help your clients meet sustainability goals.

## THE CONTRACTOR ADVANTAGE

### RELIABLE

Our award-winning ezH2O bottle filling stations are built to last, many in vandal-resistant designs.

### HELP WITH INSTALLATION

An extensive library of installation videos and real-time technical support are available as needed.

### CONVENIENTLY PACKAGED

Everything you need, including the filter, is packaged in one box and ready for installation.



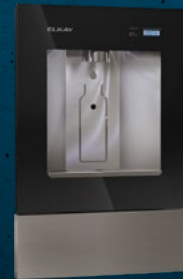
LZS8WSSP  
Enhanced ezH2O  
Bottle Filling Station



DSSBF8S  
ezH2O Floor Standing  
Bottle Filling Station



LZ8WSSMC  
ezH2O Surface Mount  
Bottle Filling Station



LBWDC00BKC  
ezH2O Liv Pro  
in Midnight (also available  
in Aspen White)



LZWS-LRPBM28K  
SwirlFlo Fountain

View all bottle filling stations at [elkay.com](http://elkay.com)



## ezH2O OUTDOOR BOTTLE FILLING STATIONS AND DRINKING FOUNTAINS

Outdoor tubular bottle filling stations can be installed directly outside, against a wall or in the ground – no electricity required because they are non-filtered and non-refrigerated.

In just one year,  
one bottle filling station  
can eliminate up to  
**15,000**  
single-use disposable  
plastic bottles from landfills



LK4420BF1UDBBLU  
ezH2O Outdoor Tubular Bottle Filling Station  
Bi-level Pedestal With Pet Station



4481FPBLU  
Outdoor Foot Pedal  
for hands-free operation



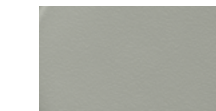
Evergreen



Blue



Black



Gray



View more at  
[elkay.com/outdoor](http://elkay.com/outdoor)



# FILTRATION

Elkay drinking solutions work best with Elkay WaterSentry® filters, which are tested and certified to NSF/ANSI 42, 53 and 401 to reduce lead and other contaminants. For renovation projects, add filtration to existing non-filtered units with our retrofit filtration kit.



**51600C**  
6,000-gallon  
High-Capacity Lead Filter  
high-capacity compatible  
with enhanced units only



**51300C**  
3,000-gallon Standard Lead Filter  
for bottle filling stations and Liv Pro



**51299C**  
1,500-gallon Lead Filter  
for coolers and fountains



**EF1500VRBMC**  
Universal Vandal-resistant Filtration Kit With Filter Status Monitor (retrofit solution)

## Never Forget to Change Filters

Tell your customers about the Elkay Filter Subscription Plan for automatic shipment of filters.



**71300C**  
WaterSentry 2,250-gallon  
PFOA/PFOS certified reduction

Learn more at  
[elkay.com/filtration](http://elkay.com/filtration)



# DRINKING WATER ACCESSORIES



**1000004833**  
Stainless Steel Back Panel  
for Single EZ Bottle Filling Station  
more configurations available



**1000004539**  
Stainless Steel Back Panel  
for Bi-level EZ Models  
more configurations available



**EZFMK**  
Filter Maintenance Kit  
cuts filter installation time in half

Change filters  
**in 1 min**  
with our quick-change,  
drop-down wrapper  
*on select models*



Watch the quick-change wrapper save time





# ELKAY COMMERCIAL SINKS

For over 100 years, the Elkay brand has been synonymous with commercial-grade stainless steel sinks, made in the USA. Keep in mind that Elkay can provide custom-built sink solutions in addition to catalogued products to meet special application requirements.

## THE CONTRACTOR ADVANTAGE

### DURABLE, LONG-LASTING MATERIAL

Our commercial sinks are made of strong, Type 304 stainless steel in a range of gauges for thickness.

### REPAIRABLE FINISH

Many of our Lustertone Classic® sinks, a top choice for classrooms, feature a forgiving finish that stands up to everyday use.

### SHIPS IN ONE BOX

All components are included in one box, including installation parts and drains and accessories, if applicable.



**EWMA4820C**  
Stainless Steel 48" x 20" x 8" Wall Hung Multiple Station Hand Wash Sink Kit (includes two LK940GN05T4H faucets and one LK18B drain)

Discover sinks by application type



## LUSTERTONE CLASSIC SINKS WITH PERFECT DRAIN®

Our Perfect Drain is a specific drain that can be added to many of our sink models, but some sinks automatically come with them.



**ELUH1814PD**  
Lustertone Classic Undermount Sink With Perfect Drain (20-1/2" x 16-1/2" x 7-7/8")



**ELUH2115PD**  
Lustertone Classic Undermount Sink With Perfect Drain (23-1/2" x 18-1/4" x 7-1/2")

## HANDWASH AND SCULLERY SINKS



**ELV22193**  
Stainless Steel Wall Hung Lavatory Sink (22" x 19" x 5-1/2")



**CHS1716C**  
Stainless Steel Single Bowl Wall Hung Handwash Sink Kit (16-3/4" x 15-1/2" x 13")



**WNSF81242**  
Weldbilt® Stainless Steel Floor Mount Single Compartment Scullery Sink (27" x 27-1/2" x 14")



**14-3C16X20-2-18X**  
Dependabilt™ Stainless Steel Three Compartment Sink With Drainboards (88" x 25-13/16" x 43-3/4")

## THE CONTRACTOR ADVANTAGE

### CONVENIENT PACKAGING

Lustertone Classic sinks equipped with Perfect Drain come with convenient packaging; all drain parts are included with the sink.

### FAST INSTALLATION

Perfect Drains have a hygienic, seamless integral connection and are available on a variety of Elkay sinks. They're unique and compatible with garbage disposals for faster installation.

### FLEXIBILITY

This special line of sinks can be installed with or without the curved edge showing, depending on your client's design preference.

# ZURN PEX CROSS-LINKED POLYETHYLENE

Zurn PEX is manufactured with a patented resin material and cross-linking process, which allows contractors to install using either the cold expansion or crimp and insert process. Our PEX maintains superior chlorine and UV resistance ratings as defined by ASTM standards.

## THE CONTRACTOR ADVANTAGE

### FULL LINE CAPABILITY

System allows you to use one pipe for both crimp and expansion systems for a variety of plumbing applications. Zurn provides the most comprehensive offering of PEX product from 3/8" to 2".

### SUPERIOR PERFORMANCE

Zurn PEX pipe and system lead the industry with the highest chlorine and UV resistance, highest burst pressure rating, and tensile strength.

### INDUSTRY-LEADING WARRANTY

25-year warranty backs your work and delivers sound mind for the building owner.



## PEX TUBING, FITTINGS AND TOOLS



34-20XLEPEX

Use other great Zurn products, such as the 20XL pressure reducing valve with integral expansion PEX barbs



PEX Expansion Toolheads

Available in 1/2", 3/4", 1", 1-1/4", 1-1/2" and 2" diameters



QPPM12H QickPort® Manifold

Preassembled, works with optimized port configurations



Crimp Tools

Other accessories, including crimping tools, pipe cutters, pipe dispensers and more also available



Straight Length PEX Pipes

Available in 3/8"-1" in red and blue and 1/2"-2" in white



Coil PEX Pipes

Available in 1/4"-2" in white and 3/8"-1" in red and blue

Zurn PEX is  
**23% stronger**  
than PEXa tubing



Zurn PEX is developed using a newer method than PEXa — our own formulation of the silane method, which creates a denser, stronger, more resilient pipe. It is a little stiffer than some pipe options because it is stronger.

Explore the complete PEX portfolio at [zurn.com](http://zurn.com)



# ZURN ELKAY SMART PRODUCTS

Whether it's avoiding major repairs, detecting a leak, or scheduling maintenance when it's needed, our smart connected products turn questions into actions and data into strategies. The products wirelessly monitor usage trends, water consumption and possible issues customizable to any building type. Building owners gain a better sense into their plumbing systems for a smarter operation.

## THE CONTRACTOR ADVANTAGE

### PREDICT AND PREVENT

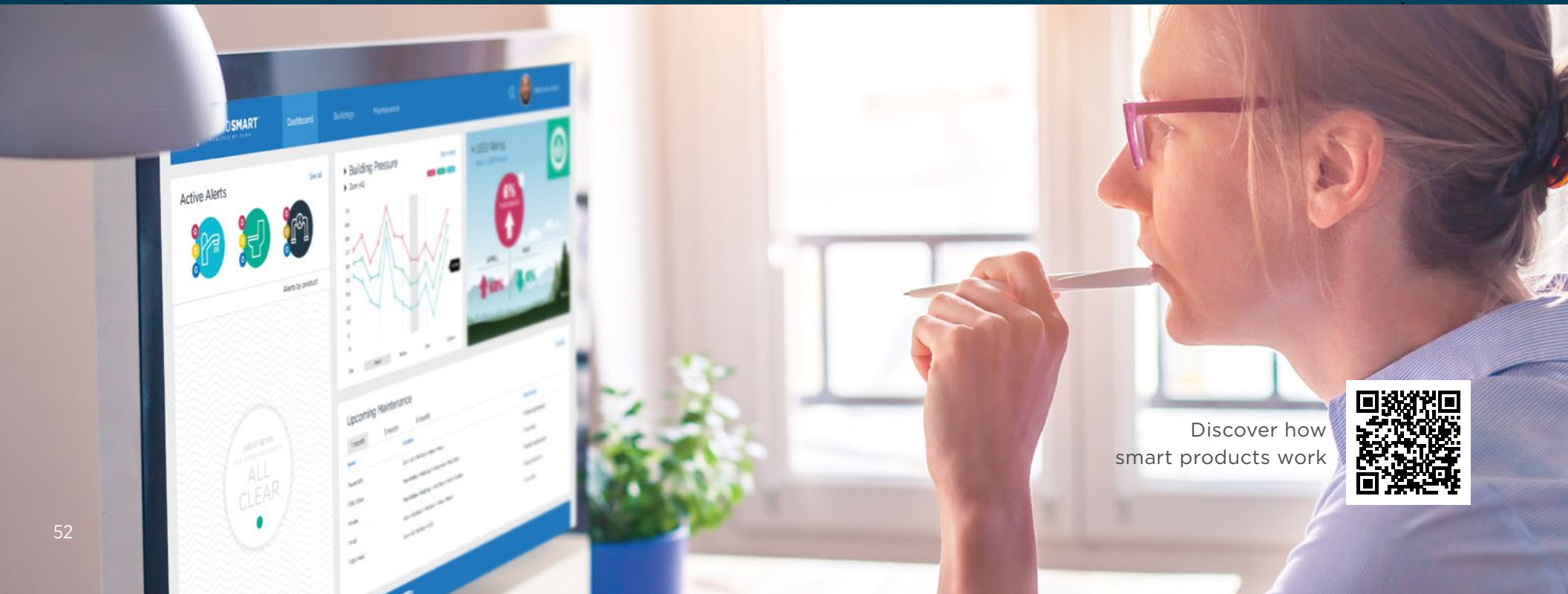
Real-time insights give you the ability to predict when maintenance is needed and prevent costly downtime.

### STRENGTHENED RELATIONSHIPS

Our plumbSMART portal offers 24/7 access to product information and trends.

### SECURE DATA

Fully encrypted data uses a wireless network to keep data secure.



Discover how smart products work



## SMART PRODUCTS

We currently offer the following smart products within an ever-growing portfolio.



**Z6955-XL-S-W1**  
Zurn Aqua-Fit Serio Series  
Smart Sensor Faucet



**ZEMS6003AV-MOB-W1**  
Zurn Hardwired Smart  
Sensor Flush Valve  
available for both urinals and water closets



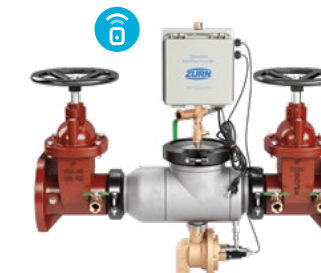
**Z-LIGHT-W1**  
Zurn Smart Occupancy Lights



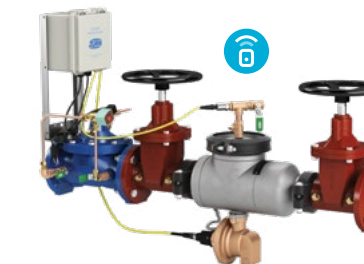
**LZS8WSSP-W1**  
Elkay Smart Connected Enhanced  
Bottle Filling Station



**G2**  
Zurn SmartPro RF Radio Frequency  
Monitoring and Alarm System



**375ASTW1**  
Zurn Wilkins Smart Backflow Preventers  
With Wireless Monitor  
transmits pressure change and relief valve  
discharge activity via text or email



**FCISAST**  
Zurn Wilkins Smart  
Flood Control System  
sends relief water discharge and system  
pressure data so you can reactively  
shut down the system



**LoRa Gen 1 Ethernet**  
is the Zurn gateway that securely  
transmits encrypted data between  
smart products and the cloud.  
Connection available as LAN or LTE.



## ABOUT ZURN ELKAY WATER SOLUTIONS

Headquartered in Milwaukee, Wisconsin, Zurn Elkay Water Solutions is a growth-oriented, pure-play water business that designs, procures, manufactures, and markets what we believe is the broadest sustainable product portfolio of solutions to improve health, human safety, and the environment. The Zurn Elkay product portfolio includes professional grade water control and safety, water distribution and drainage, drinking water, finish plumbing, hygienic, environmental and site works products for public and private spaces.

