

# Specification Drainage

SD0119 Customer Guide  
Froet Drain® Addendum



ZURN.COM US 1.855.ONE.ZURN CANADA 1.877.892.5216

Effective January 1, 2019  
Replaces All Previous Price Lists



# FROET ADDENDUM

FROET SELL SHEET	3
<b>100C</b> 15" DIAMETER DEEP SUMP DUAL OUTLET ROOF DRAIN - LOW SILHOUETTE DOME	5
<b>ZF199</b> CHAMELEON DOWNSPOUT NOZZLE WITH FLAPPER	7
<b>ZF110-R</b> 15" GREEN ROOF BOX - PERFORATED SCREEN ASSEMBLY	8
<b>ZF110-S</b> GREEN ROOF BOX - PERFORATED SCREEN ASSEMBLY, REMOVABLE COVER	9
<b>ZF7000</b> FLOW SENSOR	9



# When it Rains, it Performs... and Then Some

Get the One Drain That Works Twice as Hard



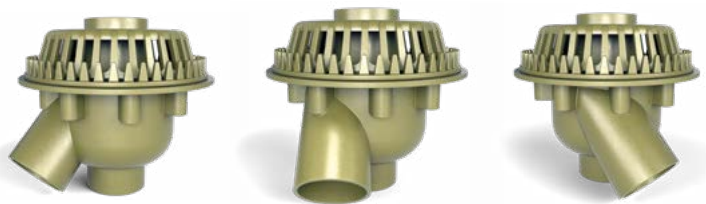
Customers trust the Zurn name when it comes to proper building drainage. We've added Froet Drain® products to our advanced drainage offering for their value to contractors and building owners. The bi-functional roof drain takes on the jobs of a primary and secondary roof drain within one superior patented system.

Contractors experience a simplified installation. By design, the system allows for both primary and secondary piping connections. The 45-degree primary outlet and ranging dimensions work with practically any application.

Building owners realize lasting performance. The cast iron body with powder coated finish, and increased clamping ring surface reduce the possibility for leak paths. The combination membrane flashing clamp and gravel guard help protect against corrosion over time.

## Froet Bi-Functional Roof Drain

- Long-lasting construction
- Third-party flow tested
- Self-cleaning design
- 6" install height cast iron dome
- 45-degree primary outlet connection
- Available for low-profile and ultra-low-profile domes
- Comes in ranging dimensions, from 2" to 8"



# Zurn Froet Advanced Drainage Products

## Downspout Nozzles: ZF199

- Five color options available
- Simple watertight attachment
- Low-profile design
- Flapper regularly furnished



## Green Roof Black Box: ZF110-R

- Simple proper green roof installation
- Highly durable
- Field adjustable
- Fertilizer resistant



## Green Roof Box: ZF110-S

- Ensures proper installation
- Solid cover comes standard, heel-proof grate options available
- Multiple heights for any application



## Flow Sensors: F7000

- Low cost monitoring
- BMS connectivity
- 12-volt system



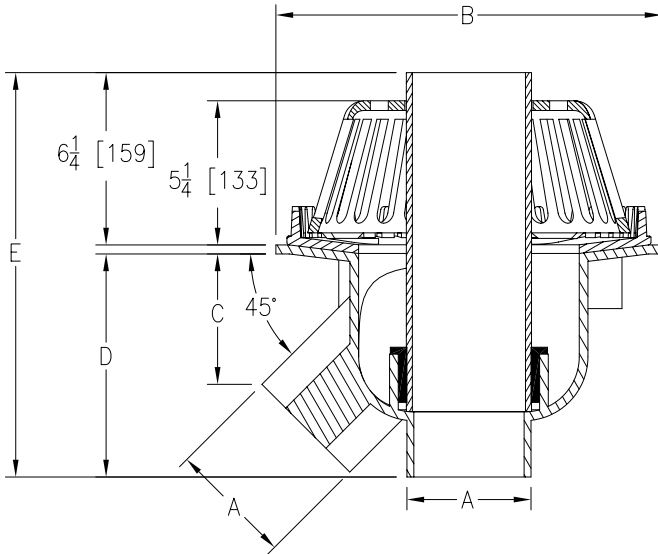
*Go with the one system that's twice the roof drain for contractors and building owners.*

# 100C 15" DIAMETER DEEP SUMP DUAL OUTLET ROOF DRAIN - LOW SILHOUETTE DOME



## ENGINEERING SPECIFICATION

Bi-functional Froet Drain with 45° primary outlet connection. Powder coated cast iron deep sump body with combination membrane flashing clamp/gravel guard, overflow pipe (2", 3", 4", 5", 6", 8" [51mm, 76mm, 102mm, 127mm, 152mm, 203mm]) with standard 5-1/4" [133mm] high cast iron dome and 6-1/4" [159mm] high cast iron overflow.



PREFIXES	DESCRIPTION	PIPE SIZE	LIST PRICE
100C*	Froet 100C Bi- Functional Deep Sump Dual Outlet Roof Drain	2"	878.00
		3"	1,468.00
		4"	1,521.00
		5"	2,536.00
		6"	2,564.00
8"	6,706.00		
SUFFIXES		ADD	
-C	Underdeck Clamp		364.00
-CFW	Control Flow Weir		684.00
-DP	Deck Mounting Plate (2-1/4" Elevation)		790.00
-DU	Cast Iron Dome on Overflow Pipe	2"	542.00
		3"	542.00
		4"	542.00
		5"	605.00
		6"	605.00
8"	-		
-E	Static Extensions (2", 4", 6")	2"	730.00
		4"	900.00
		6"	1,148.00
-ER1.5	Elevation Ring (1.5" of Insulation)		188.00
-ER2	Elevation Ring (2" of Insulation)		190.00
-LP	Low Profile Dome		N/C
-R	Roof Sump Reciever		523.00
-ULP	Ultra Low Profile Dome		N/C
-VEP	Vent Pipe		527.00
-84	Stainless Steel Perforated Gravel Guard		1,282.00
BEST SELLERS			LIST PRICE
100C4			1,521.00
100C4LP			1,521.00
100C6LP			2,564.00

Dimensions in inches [mm]					Approximate Weight lb [kg]	Dome Open Area sq in [cm <sup>2</sup> ]
A Pipe Size	B	C	D	E		
2 [51]	10-1/4 [260]	2-13/16 [71]	5 [127]	11-5/8 [295]	21 [6]	48 [310]
3 [76]	14 [356]	4-7/8 [124]	6-7/8 [175]	13-1/2 [343]	47 [21]	90 [581]
4 [102]	14 [356]	4-7/8 [124]	8 [203]	14-5/8 [371]	53 [24]	90 [581]
5 [127]	18 [457]	5-1/2 [140]	10-1/4 [260]	16-7/8 [429]	83 [38]	127 [819]
6 [152]	18 [457]	5-1/2 [140]	11-1/4 [286]	17-7/8 [454]	89 [40]	127 [819]
8 [203]	25 [635]	8-1/4 [210]	13-3/4 [349]	20-3/8 [518]	122 [55]	203 [1310]

\*Regularly furnished unless otherwise specified.

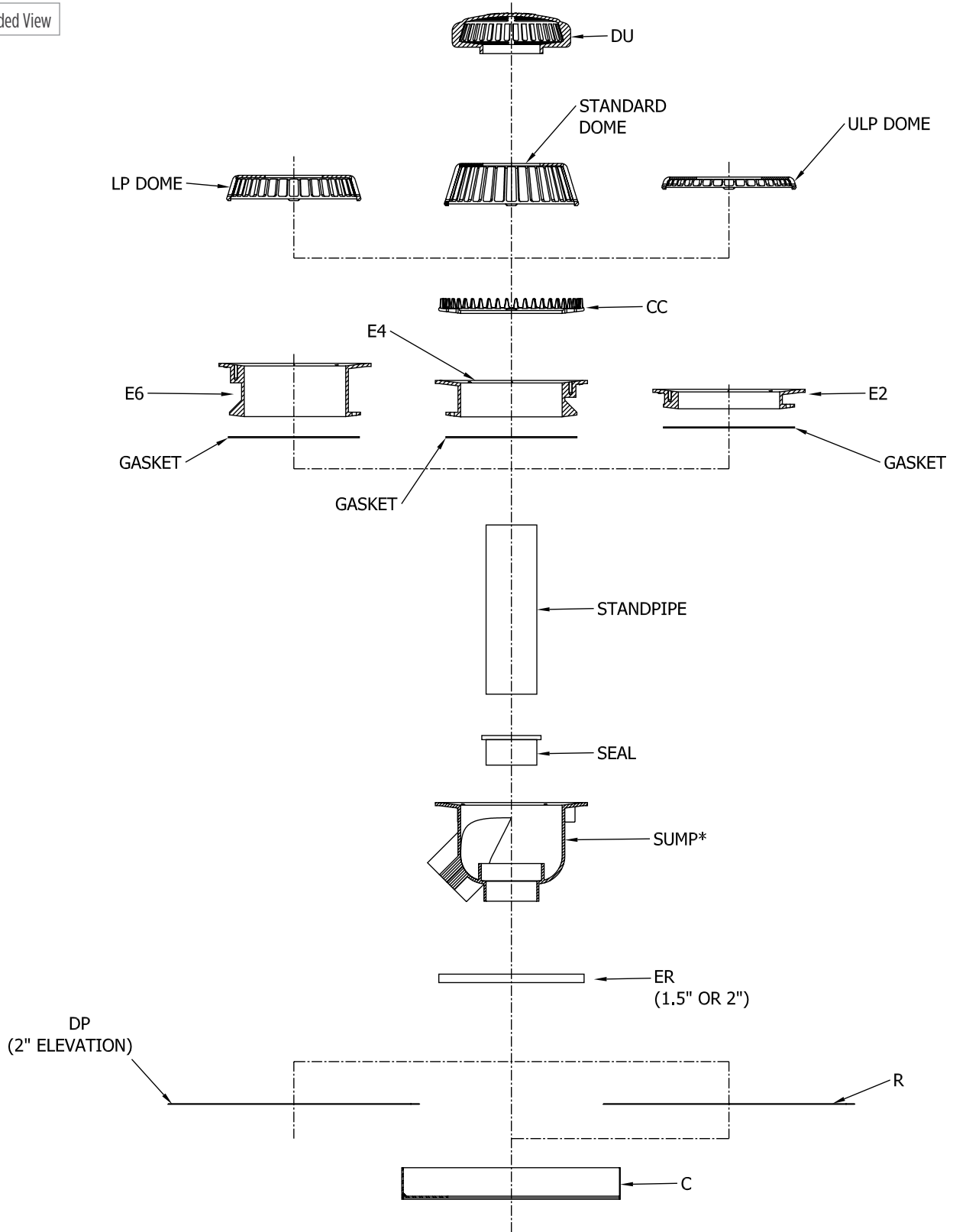
Items designated as Best Sellers are most specified and are generally in stock for shipment.

🕒 This symbol denotes a product that is engineered to reduce installation and rework time.

For additional product information, please visit [www.zurn.com](http://www.zurn.com).

# 100C 15" DIAMETER DEEP SUMP DUAL OUTLET ROOF DRAIN - LOW SILHOUETTE DOME

Exploded View



For additional product information, please visit [www.zurn.com](http://www.zurn.com).

\*Regularly furnished unless otherwise specified.

Items designated as Best Sellers are most specified and are generally in stock for shipment.

Ⓢ This symbol denotes a product that is engineered to reduce installation and rework time.

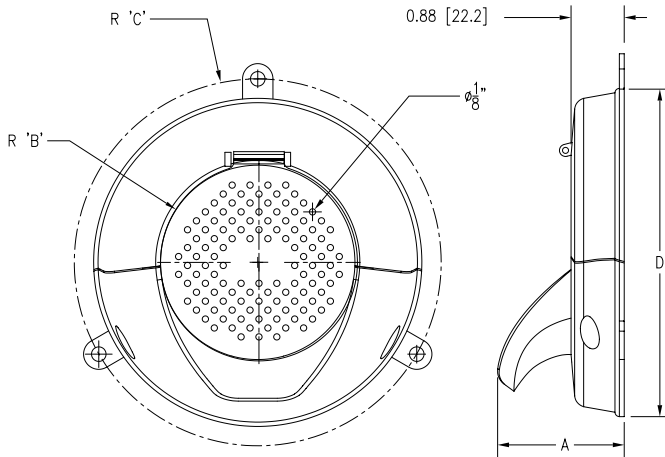


# ZF199 CHAMELEON DOWNSPOUT NOZZLE WITH FLAPPER



## ENGINEERING SPECIFICATION

Downspout nozzle, all aluminum body, downspout gasket for cast iron or PVC inlet with powder coated face of wall flange, outlet nozzle, and perforated hinged flapper.

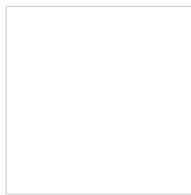


PREFIXES	DESCRIPTION	PIPE SIZE	LIST PRICE
ZF199	All Aluminum Body*	2"	1,182.00
		3"	1,182.00
		4"	1,182.00
		6"	2,044.00
		8"	2,811.00
		10"	3,485.00

OUTLETS (SPECIFY PIPE SIZE IN INCHES AND TYPE OF OUTLET)			
OUTLET TYPE		OUTLET DESIGNATION (PIPE SIZE/OUTLET TYPE)	ADD
DSG	Downspout Gasket	2DSG, 3DSG, 4DSG, 6DSG, 8DSG, 10DSG	N/C

COLORS (MUST SPECIFY COLOR)			
			ADD
-BW	Bone White Powder Coating		-
-JB	Jet Black Powder Coating		-
-MB	Medium Bronze Powder Coating		-
-SAN	Sandstone Powder Coating		-
-SGR	Satin Gray Powder Coating		-

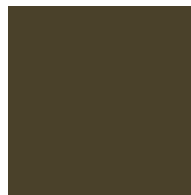
Pipe Size	Dimensions in inches [mm]				Approximate Weight lb [kg]
	A	B	C	D	
2 [51]	2.5 [6.4]	1 [2.5]	2.7 [69]	5.31 [135]	0.51 [0.23]
3 [76]	2.5 [6.4]	1.5 [38]	3.27 [83]	5.75 [146]	1.07 [0.49]
4 [102]	2.5 [6.4]	2 [51]	3.77 [96]	6.75 [171]	1.11 [0.50]
6 [152]	2.5 [6.4]	3 [76]	4.77 [121]	8.75 [222]	1.75 [0.79]
8 [203]	2.5 [6.4]	4 [102]	5.84 [148]	10.85 [275]	2.53 [1.15]
10 [254]	2.5 [6.4]	5 [127]	6.90 [175]	13.71 [348]	3.21 [1.46]



Bone White



Jet Black



Medium Bronze



Sandstone



Satin Gray

\*Regularly furnished unless otherwise specified.

Items designated as Best Sellers are most specified and are generally in stock for shipment.

⌚ This symbol denotes a product that is engineered to reduce installation and rework time.

For additional product information, please visit [www.zurn.com](http://www.zurn.com).

## ZF110-R 15" GREEN ROOF BOX - PERFORATED SCREEN ASSEMBLY

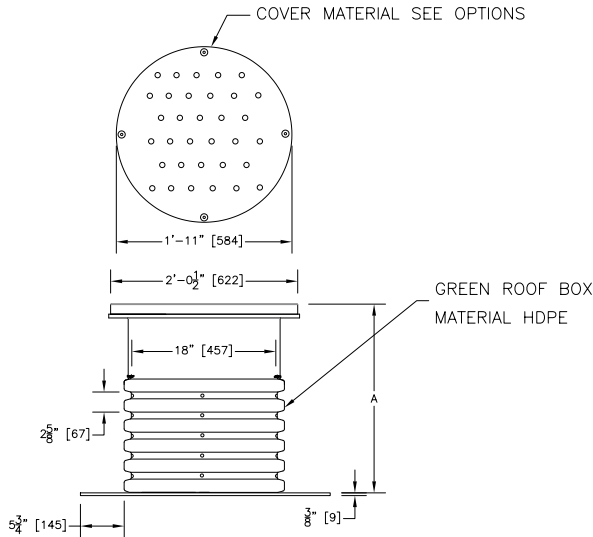


### ENGINEERING SPECIFICATION

Zurn green roof drain box. HDPE Adjustable deep sump box for green roof applications. Box can be field cut for additional installation heights.

### NOTE

The HDPE Adjustable Green Roof Box will accommodate all Zurn 100C Froet Drains except for the 100C8.



PREFIXES	DESCRIPTION	SIZE	A' BODY HT. DIM.	LIST PRICE
ZF110-R	HDPE Adjustable Round Green Roof Box*	R1	14"	2,478.00
		R2	24"	2,770.00
		R3	36"	3,063.00
		R4	48"	3,356.00
SUFFIXES				ADD
-DW	Double Wall Corrugated			POA
-LP1	HDPE Perforated Lid			1,442.00
-LP2	2000 lb Load Composite Lid Perforated			1,275.00
-LS1	HDPE Solid Lid			2,340.00
-LS2	2000 lb Load Composite Lid Solid			2,020.00
-RB	S/S Recessed Barrier			POA

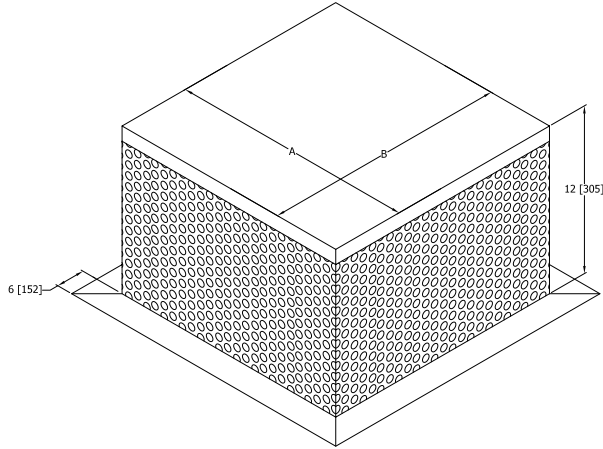
Product Size	Product Description	A inches [mm]	Product Weight lb [kg]
ZF110-R1	Adjustable Round HDPE	14 [356]	26 [12]
ZF110-R2	Adjustable Round HDPE	24 [610]	34 [15]
ZF110-R3	Adjustable Round HDPE	36 [914]	41 [19]
ZF110-R4	Adjustable Round HDPE	48 [1219]	49 [22]

## ZF110-S GREEN ROOF BOX - PERFORATED SCREEN ASSEMBLY, REMOVABLE COVER



### ENGINEERING SPECIFICATION

Zurn green roof drain box comes standard with solid stainless steel top and stainless steel non-adjustable square sump box with vertical perforated sides to allow for proper drainage in green roof applications.



PREFIXES	DESCRIPTION	SIZE	A' DIM. SQ.	LIST PRICE
ZF110-S	Fabricated Type 304 Stainless Steel Green Roof Box*	3/4	16"	7,492.00
		5/6	20"	8,325.00
		8	28"	10,000.00
SUFFIXES				ADD
-GTA	Light Duty Heel-Proof Grate Aluminum	3/4		1,159.00
		5/6		1,092.00
		8		2,917.00
-GTS	Light Duty Heel-Proof Grate Stainless			POA
-H2	Double Height 24" [610mm]			POA
-H3	Triple Height 36" [914mm]			POA

Part Number	A inches [mm]	B inches [mm]	Product Weight lb [kg]
ZF110-S 3/4	16 [406]	16 [406]	18 [8]
ZF110-S 5/6	20 [508]	20 [508]	27 [12]
ZF110-S 8	28 [711]	28 [711]	39 [18]

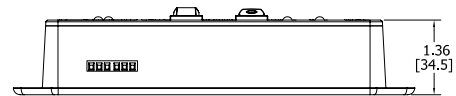
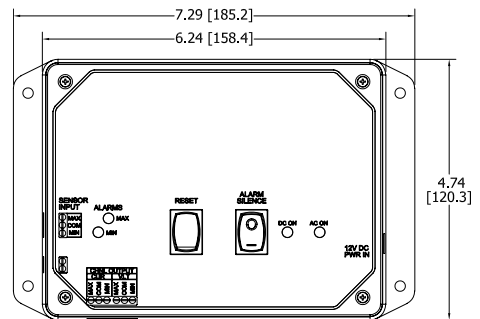
## ZF7000 FLOW SENSOR



### ENGINEERING SPECIFICATION

Froet™ flow sensor. Indication of a primary system blockage or excessive flow through the outlet pipe. Outputs are current or voltage that will provide for connection to building management systems or control valve actuators. Power is supplied to the unit from a 120 volt to 12 volt plug in transformer included with the sensor.

PREFIXES	DESCRIPTION	LIST PRICE
ZF7001	Single Channel Flow Sensor Control Module	1,554.00
ZF7005	5 Channel Flow Sensor Control Module	2,476.00
SUFFIXES		ADD
-BMS	Building Management System for Flow Sensor(s)	3,897.00



Approximate Weight oz [g]
9.4 [265]

\*Regularly furnished unless otherwise specified.

Items designated as Best Sellers are most specified and are generally in stock for shipment.

🕒 This symbol denotes a product that is engineered to reduce installation and rework time.

For additional product information, please visit [www.zurn.com](http://www.zurn.com).

**Zurn Industries, LLC** Specification Drainage Operation  
1801 Pittsburgh Avenue  
Erie, PA 16502, 855.663.9876

In Canada

**Zurn Industries Limited**  
7900 Goreway Drive, Unit 10  
Brampton, ON L6T 5W6, 877.892.5216

[ZURN.COM](http://ZURN.COM) [US 1.855.ONE.ZURN](tel:1.855.ONE.ZURN) [CANADA 1.877.892.5216](tel:1.877.892.5216)

