

# Zurn Wilkins Grooved Couplings and Fittings

CF0624 Customer Guide



# ZURN WILKINS GROOVED COUPLINGS AND FITTINGS

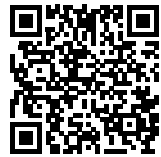
<b>MODEL FP3</b> – END CAP	<b>3</b>
<b>MODEL FP3ETF</b> – END CAP WITH 1" NPT DRAIN	<b>3</b>
<b>MODEL FP8</b> – GROOVED FLANGE	<b>4</b>
<b>MODEL FP23EZ1</b> – RIGID COUPLING	<b>4</b>
<b>MODEL FP23RA</b> – COUPLING, RIGID ANGLE PAD	<b>5</b>
<b>MODEL FP23F</b> – COUPLING, FLEXIBLE	<b>5</b>
<b>MODEL FP23</b> – COUPLING, REDUCING	<b>6</b>
<b>MODEL FP51</b> – GROOVED REDUCER	<b>7</b>
<b>MODEL FP52</b> – GROOVED ELBOW	<b>8</b>
<b>MODEL FP52GTF</b> – END OF RUN ADAPTER	<b>9</b>
<b>MODEL FP52D</b> – 90 DEGREE ELBOW WITH DRAIN	<b>9</b>
<b>MODEL FP53</b> – GROOVED TEE	<b>10</b>
<b>MODEL FP56</b> – GROOVED CROSS	<b>11</b>
<b>MODEL FP63LTF</b> – MECHANICAL TEE, U-BOLTED, THREADED FEMALE NPT OUTLET	<b>12</b>
<b>MODEL FP63TF</b> – MECHANICAL TEE, THREADED FEMALE NPT OUTLET	<b>13</b>
<b>MODEL FP63G</b> – MECHANICAL TEE, GROOVED BRANCH	<b>14</b>

# Zurn Wilkins Couplings and Fittings



High Quality Fire Protection Products  
From the Brand You Trust

Now you can get a full line of painted grooved fittings and couplings from Zurn Wilkins, the brand you already trust for backflow prevention and fire valves. Available from a single source in sizes up to 12".



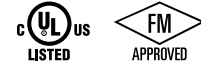
Find more information  
at [zurn.com/grooved](http://zurn.com/grooved)

### Features

- ✓ Trusted name in water control and fire prevention
- ✓ Full UL/FM line of painted and galvanized grooved fittings and couplings
- ✓ One-bolt coupling allows for faster installs
- ✓ Available in sizes 1-1/4 in. to 12 in.
- ✓ Angle pad couplings are standard
- ✓ All gaskets come pre-lubricated
- ✓ All fittings and couplings available in galvanized steel
- ✓ Factory is ISO9001:2015 certified



## MODEL FP3 – END CAP

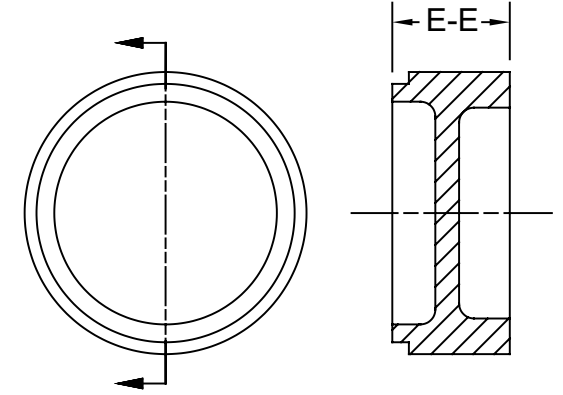


### DESCRIPTION

Standard grooved pipe ends.

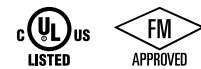
### FEATURES

- Housing: ASTM A536 65-45-12 Ductile Iron
- Compliance: UL® Listed, C-UL® Listed, FM® Approved
- Maximum Pressure:
  - 1 1/4" – 4" 400 psi
  - 6" – 10" 300 psi
- Paint Color: Red (Optional as Galvanized -GALV)



SIZE IN.	PART NUMBER	DESCRIPTION	E TO E IN.	WEIGHT LB
1 1/4	114-FP3	1 1/4" Grooved Cap, UL/FM, 400 psi	1.0	0.3
1 1/2	112-FP3	1 1/2" Grooved Cap, UL/FM, 400 psi	1.0	0.4
2	2-FP3	2" Grooved Cap, UL/FM, 400 psi	1.0	0.6
2 1/2	212-FP3	2 1/2" Grooved Cap, UL/FM, 400 psi	1.0	0.9
3	3-FP3	3" Grooved Cap, UL/FM, 400 psi	1.0	1.0
4	4-FP3	4" Grooved Cap, UL/FM, 400 psi	1.0	1.4
6	6-FP3	6" Grooved Cap, UL/FM, 300 psi	1.0	4.4
8	8-FP3	8" Grooved Cap, UL/FM, 300 psi	1.0	9.3
10	10-FP3	10" Grooved Cap, UL/FM, 300 psi	1.0	9.3

## MODEL FP3ETF – END CAP WITH 1" NPT DRAIN

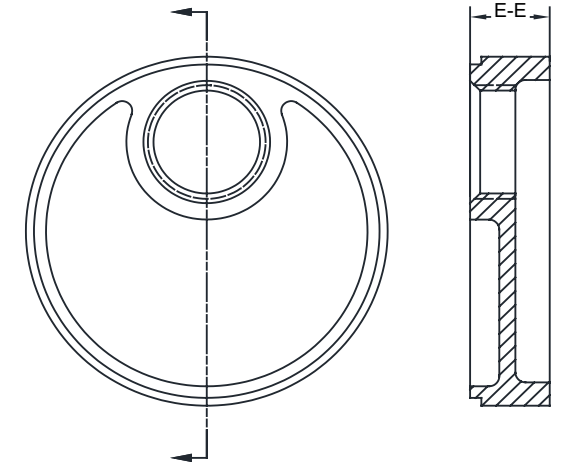


### DESCRIPTION

Grooved pipe ends with 1" NPT drain to allow system to be drained.

### FEATURES

- Housing: ASTM A536 65-45-12 Ductile Iron
- Compliance: UL® Listed, C-UL® Listed, FM® Approved
- Maximum Pressure:
  - 1 1/4" – 4" 400 psi
  - 6" – 10" 300 psi
- Paint Color: Red (Optional as Galvanized -GALV)



SIZE IN.	PART NUMBER	DESCRIPTION	E TO E IN.	WEIGHT LB
2	2X1-FP3ETF	2" Grooved Eccentric Drain Cap, Painted, UL/FM, 400 psi, Tapped (1" FNPT)	1.0	0.7
2 1/2	212X1-FP3ETF*	2 1/2" Grooved Eccentric Drain Cap, Painted, UL/FM, 400 psi, Tapped (1" FNPT)	1.0	0.8
3	3X1-FP3ETF	3" Grooved Eccentric Drain Cap, Painted UL/FM, 400 psi, Tapped (1" FNPT)	1.0	1.7
4	4X1-FP3ETF	4" Grooved Eccentric Drain Cap, Painted, UL/FM, 400 psi, Tapped (1" FNPT)	1.0	2.1
6	6X1-FP3ETF	6" Grooved Eccentric Drain Cap, Painted, UL/FM, 300 psi, Tapped (1" FNPT)	1.0	4.0

\*Not available in Galvanized

## MODEL FP8 – GROOVED FLANGE

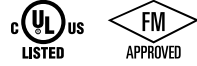
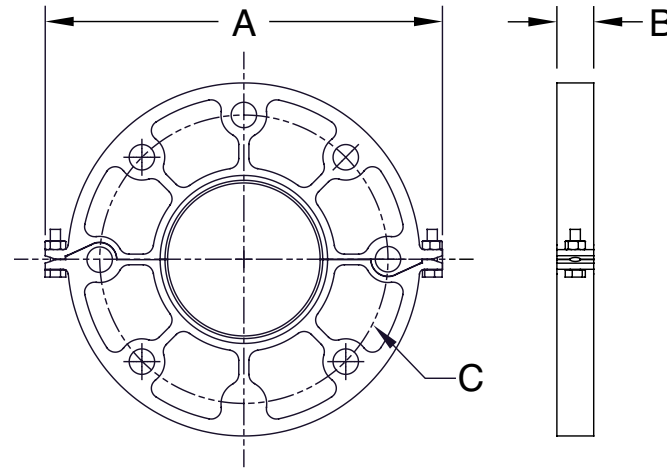


### DESCRIPTION

Grooved Flanges convert flanged piping connections to standard grooved.

### FEATURES

- Housing: ASTM A536 65-45-12 Ductile Iron
- Gasket: Pre-lubricated, Pressure responsive EPDM
- Compliance: UL® Listed, C-UL® Listed, FM® Approved
- Maximum Pressure:
  - 2" – 8" 300 psi
  - 10" 175 psi
- Paint Color: Red (Optional as Galvanized -GALV)



SIZE IN.	PART NUMBER	DESCRIPTION	A IN.	B IN.	C IN.	WEIGHT LB
2	2-FP8	2" Grooved Split Ring Flange Adapter, UL/FM, 300 psi, class 150	8.7	0.9	6.5	3.8
2 1/2	2 1/2-FP8	2 1/2" Grooved Split Ring Flange Adapter, UL/FM, 300 psi, class 150	9.4	0.9	7.3	5.1
3	3-FP8	3" Grooved Split Ring Flange Adapter, UL/FM, 300 psi, class 150	9.9	0.9	7.6	5.2
4	4-FP8	4" Grooved Split Ring Flange Adapter, UL/FM, 300 psi, class 150	9.8	0.9	8.7	6.5
6	6-FP8	6" Grooved Split Ring Flange Adapter, UL/FM, 300 psi, class 150	13.6	0.9	11.2	8.5
8	8-FP8	8" Grooved Split Ring Flange Adapter, UL/FM, 300 psi, class 150	16.5	1.1	13.4	13.5
10	10-FP8	10" Grooved Split Ring Flange Adapter, UL/FM, 300 psi, class 150	20.0	1.2	16.0	20.9

## MODEL FP23EZ1 – RIGID COUPLING

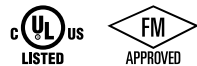
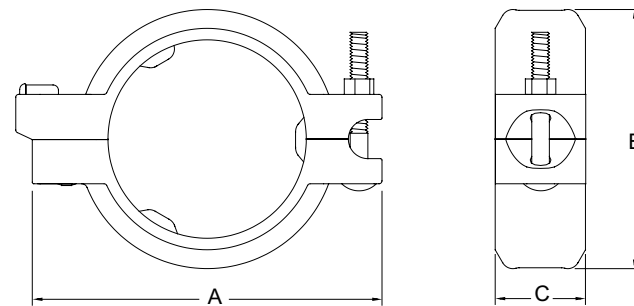


### DESCRIPTION

One-bolt coupling makes it faster to join grooved pipes in sprinkler and fire suppression systems. Rigid coupling provides sturdy, inflexible joints and features a three-tab gasket design for quick and easy leak-free installation.

### FEATURES

- Housing: ASTM A536 65-45-12 Ductile Iron
- Gasket: Pre-lubricated, Pressure responsive EPDM
- Bolts & Nuts: Grade 5
- Compliance: UL® Listed, C-UL® Listed, FM® Approved
- Maximum Pressure:
  - 1 1/4" - 6" 300 psi
- Paint Color: Red (Optional as Galvanized - GALV)



SIZE IN.	PART NUMBER	DESCRIPTION	A IN.	B IN.	C IN.	WEIGHT LB	DEEP SOCKET SIZE
1 1/4	114-FP23EZ1	1 1/4" Grooved Coupling, One-Bolt, UL/FM, 300 psi	4.2	2.5	1.9	1.1	1 1/16 in.
1 1/2	112-FP23EZ1	1 1/2" Grooved Coupling, One-Bolt, UL/FM, 300 psi	4.5	2.8	1.9	1.2	
2	2-FP23EZ1	2" Grooved Coupling, One-Bolt, UL/FM, 300 psi	5.0	3.2	1.9	1.4	
2 1/2	212-FP23EZ1	2 1/2" Grooved Coupling, One-Bolt, UL/FM, 300 psi	5.5	3.8	1.9	1.6	
3	3-FP23EZ1	3" Grooved Coupling, One-Bolt, UL/FM, 300 psi	6.6	4.5	1.9	2.0	7/8 in.
4	4-FP23EZ1	4" Grooved Coupling, One-Bolt, UL/FM, 300 psi	7.6	5.5	2.0	2.9	
6	6-FP23EZ1	6" Grooved Coupling, One-Bolt, UL/FM, 300 psi	10.1	8.0	2.0	4.9	

## MODEL FP23RA – COUPLING, RIGID ANGLE PAD

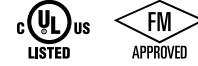
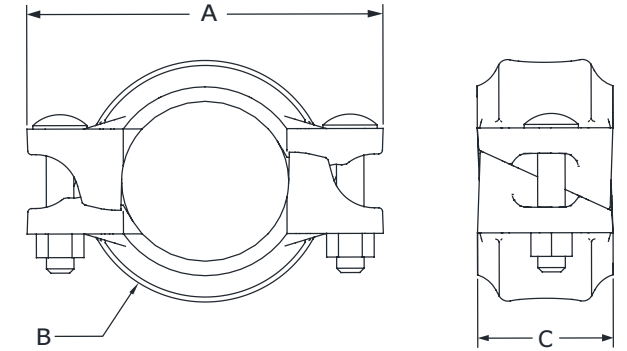


### DESCRIPTION

Rigid Angle Pad Couplings provide sturdy inflexible joints comparable to flanged, welded, or threaded connections. They are designed to prevent angular and axial deflection of connected pipes.

### FEATURES

- Housing: ASTM A536 65-45-12 Ductile Iron
- Gasket: Pre-lubricated, Pressure responsive EPDM
- Bolts & Nuts: Grade 5
- Compliance: UL® Listed, C-UL® Listed, FM® Approved
- Maximum Pressure: 300 psi
- Paint Color: Red (Optional as Galvanized -GALV)



SIZE IN.	PART NUMBER	DESCRIPTION	A IN.	B IN.	C IN.	WEIGHT LB
1 1/4	114-FP23RA	1 1/4" Grooved Coupling, Rigid, Angle Pad, UL/FM, 300 psi	4.2	2.6	1.9	1.3
1 1/2	112-FP23RA	1 1/2" Grooved Coupling, Rigid, Angle Pad, UL/FM, 300 psi	4.4	2.8	1.9	1.3
2	2-FP23RA	2" Grooved Coupling, Rigid, Angle Pad, UL/FM, 300 psi	4.9	3.3	1.9	1.6
2 1/2	212-FP23RA	2 1/2" Grooved Coupling, Rigid, Angle Pad, UL/FM, 300 psi	5.4	3.9	1.9	1.8
3	3-FP23RA	3" Grooved Coupling, Rigid, Angle Pad, UL/FM, 300 psi	6.5	4.6	1.9	2.4
4	4-FP23RA	4" Grooved Coupling, Rigid, Angle Pad, UL/FM, 300 psi	7.4	5.5	2.0	2.9
6	6-FP23RA	6" Grooved Coupling, Rigid, Angle Pad, UL/FM, 300 psi	9.8	7.9	2.1	4.9
8	8-FP23RA	8" Grooved Coupling, Rigid, Angle Pad, UL/FM, 300 psi	12.6	9.9	2.5	8.8
10	10-FP23RA	10" Grooved Coupling, Rigid, Angle Pad, UL/FM, 300 psi	15.7	12.4	2.6	17.4
12	12-FP23RA	12" Grooved Coupling, Rigid, Angle Pad, UL/FM, 300 psi	18.0	14.5	2.6	22.7

## MODEL FP23F – COUPLING, FLEXIBLE

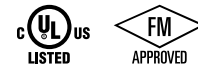
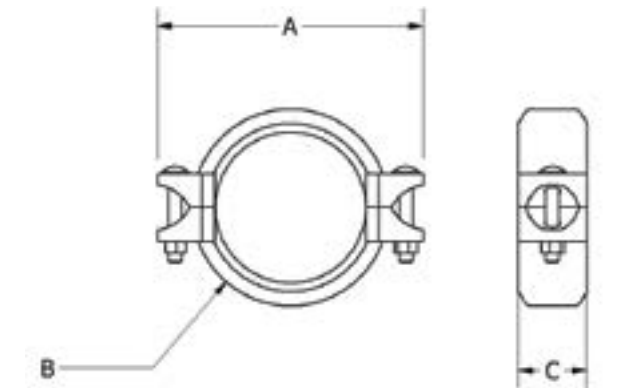


### DESCRIPTION

Flexible Couplings allow joints to flex at the connection without leakage. They meet flexure requirements for structural settling, inter-building piping, and seismic motion.

### FEATURES

- Housing: ASTM A536 65-45-12 Ductile Iron
- Gasket: Pre-lubricated, Pressure responsive EPDM
- Bolts & Nuts: Grade 5
- Compliance: UL® Listed, C-UL® Listed, FM® Approved
- Maximum Pressure: 300 psi
- Paint Color: Red (Optional as Galvanized -GALV)



SIZE IN.	PART NUMBER	DESCRIPTION	A IN.	B IN.	C IN.	WEIGHT LB
1 1/2	112-FP23F	1 1/2" Grooved Coupling, Flexible, UL/FM, 300 psi	4.4	2.8	1.7	1.3
2	2-FP23F	2" Grooved Coupling, Flexible, UL/FM, 300 psi	4.9	3.3	1.7	1.5
2 1/2	212-FP23F	2 1/2" Grooved Coupling, Flexible, UL/FM, 300 psi	5.4	3.9	1.8	1.7
3	3-FP23F	3" Grooved Coupling, Flexible, UL/FM, 300 psi	6.5	4.6	1.8	2.4
4	4-FP23F	4" Grooved Coupling, Flexible, UL/FM, 300 psi	7.5	5.6	1.9	2.9
6	6-FP23F	6" Grooved Coupling, Flexible, UL/FM, 300 psi	9.8	7.9	1.9	4.7
8	8-FP23F	8" Grooved Coupling, Flexible, UL/FM, 300 psi	12.6	10.0	2.3	7.9



## MODEL FP23 – COUPLING, REDUCING

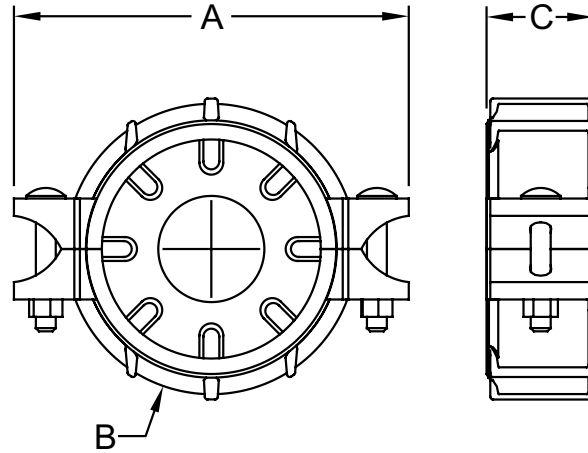


### DESCRIPTION

Reducing Couplings provide a flexible style joint between pipes of different sizes. Each reducing coupling makes a connection that would otherwise require two separate couplings and a reducer.

### FEATURES

- Housing: ASTM A536 65-45-12 Ductile Iron
- Gasket: Pre-lubricated, Pressure responsive EPDM
- Bolts & Nuts: Grade 5
- Compliance: UL® Listed, C-UL® Listed, FM® Approved
- Maximum Pressure: 300 psi
- Paint Color: Red (Optional as Galvanized -GALV)



SIZE IN.	PART NUMBER	DESCRIPTION	A IN.	B IN.	C IN.	WEIGHT LB
1 1/2 X 1 1/4	112X114-FP23	1 1/2" by 1 1/4" Grooved Reducing Coupling, UL/FM, 300 psi	4.6	2.9	1.8	1.3
2 X 1 1/2	2X112-FP23	2" by 1 1/2" Grooved Reducing Coupling, UL/FM, 300 psi	5.1	3.5	1.9	2.0
2 1/2 X 1 1/2	212X112-FP23*	2 1/2" by 1 1/2" Grooved Reducing Coupling, UL/FM, 300 psi	5.4	4.0	1.9	2.6
2 1/2 X 2	212X2-FP23	2 1/2" by 2" Grooved Reducing Coupling, UL/FM, 300 psi	5.4	4.0	1.9	2.5
3 X 1 1/2	3X112-FP23*	3" by 1 1/2" Grooved Reducing Coupling, UL/FM, 300 psi	6.5	4.7	1.9	3.8
3 X 2	3X2-FP23	3" by 2" Grooved Reducing Coupling, UL/FM, 300 psi	6.5	4.7	1.9	3.6
3 X 2 1/2	3X212-FP23	3" by 2 1/2" Grooved Reducing Coupling, UL/FM, 300 psi	6.5	4.7	1.9	3.3
4 X 2	4X2-FP23	4" by 2" Grooved Reducing Coupling, UL/FM, 300 psi	7.7	5.9	1.9	4.7
4 X 2 1/2	4X212-FP23	4" by 2 1/2" Grooved Reducing Coupling, UL/FM, 300 psi	7.7	5.9	1.9	4.6
4 X 3	4X3-FP23	4" by 3" Grooved Reducing Coupling, UL/FM, 300 psi	7.7	5.9	1.9	4.2
6 X 3	6X3-FP23*	6" by 3" Grooved Reducing Coupling, UL/FM, 300 psi	9.3	8.0	2.0	7.6
6 X 4	6X4-FP23	6" by 4" Grooved Reducing Coupling, UL/FM, 300 psi	9.3	8.0	2.0	8.2
8 X 6	8X6-FP23	8" by 6" Grooved Reducing Coupling, UL/FM, 300 psi	12.3	10.4	2.4	15.2

\*Not available in Galvanized

## MODEL FP51 – GROOVED REDUCER

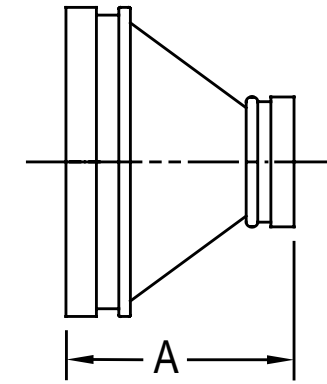


### DESCRIPTION

Reducers connect pipes of different sizes. Concentric grooved-grooved, grooved-male, and grooved-female options are available.

### FEATURES

- Housing: ASTM A536 65-45-12 Ductile Iron
- Compliance: UL® Listed, C-UL® Listed, FM® Approved
- Maximum Pressure:
  - 2X – 4X 400 psi
  - 6X – 10X 300 psi
- Paint Color: Red (Optional as Galvanized -GALV)



SIZE IN.	PART NUMBER	DESCRIPTION	A IN.	MAX. PRESSURE PSI	WEIGHT LB
2 X 1	2X1-FP51	2" by 1" Grooved x Grooved Concentric Reducer, UL/FM, 300 psi	2.5	400	0.7
2 X 1 1/4	2X114-FP51	2" by 1 1/4" Grooved x Grooved Concentric Reducer, UL/FM, 300 psi	2.5	400	0.7
2 X 1 1/2	2X112-FP51	2" by 1 1/2" Grooved x Grooved Concentric Reducer, UL/FM, 300 psi	2.5	400	0.7
2 1/2 X 1 1/4	212X114-FP51*	2 1/2" by 1 1/4" Grooved x Grooved Concentric Reducer, UL/FM, 400 psi	2.5	400	0.9
2 1/2 X 1 1/2	212X112-FP51	2 1/2" by 1 1/2" Grooved x Grooved Concentric Reducer, UL/FM, 300 psi	2.5	400	0.9
2 1/2 X 2	212X2-FP51	2 1/2" by 2" Grooved x Grooved Concentric Reducer, UL/FM, 300 psi	2.5	400	1.0
3 X 1 1/2	3X112-FP51	3" X 1 1/2" Grooved x Grooved Concentric Reducer, UL/FM, 300 psi	2.5	400	1.1
3 X 2	3X2-FP51	3" by 2" Grooved x Grooved Concentric Reducer, UL/FM, 300 psi	2.5	400	1.5
3 X 2 1/2	3X212-FP51	3" by 2 1/2" Grooved x Grooved Concentric Reducer, UL/FM, 300 psi	2.5	400	1.3
4 X 2	4X2-FP51	4" by 2" Grooved x Grooved Concentric Reducer, UL/FM, 300 psi	3.0	400	2.2
4 X 2 1/2	4X212-FP51	4" by 2 1/2" Grooved x Grooved Concentric Reducer, UL/FM, 300 psi	3.0	400	2.0
4 X 3	4X3-FP51	4" by 3" Grooved x Grooved Concentric Reducer, UL/FM, 300 psi	3.0	400	2.1
6 X 2	6X2-FP51	6" by 2" Grooved x Grooved Concentric Reducer, UL/FM, 300 psi	4.0	300	4.4
6 X 2 1/2	6X212-FP51*	6" by 2 1/2" Grooved x Grooved Concentric Reducer, UL/FM, 300 psi	4.0	300	4.0
6 X 3	6X3-FP51	6" by 3" Grooved x Grooved Concentric Reducer, UL/FM, 300 psi	4.0	300	4.1
6 X 4	6X4-FP51	6" by 4" Grooved x Grooved Concentric Reducer, UL/FM, 300 psi	4.0	300	4.6
8 X 3	8X3-FP51	8" by 3" Grooved x Grooved Concentric Reducer, UL/FM, 300 psi	5.0	300	7.7
8 X 4	8X4-FP51	8" by 4" Grooved x Grooved Concentric Reducer, UL/FM, 300 psi	5.0	300	6.8
8 X 6	8X6-FP51	8" by 6" Grooved x Grooved Concentric Reducer, UL/FM, 300 psi	5.0	300	8.2
10 X 6	10X6-FP51	10" by 6" Grooved x Grooved Concentric Reducer, UL/FM, 300 psi	6.0	300	14.5
10 X 8	10X8-FP51	10" by 8" Grooved x Grooved Concentric Reducer, UL/FM, 300 psi	6.0	300	14.2

\*Not available in Galvanized

## MODEL FP52 – GROOVED ELBOW

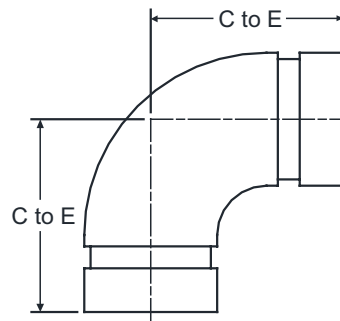


### DESCRIPTION

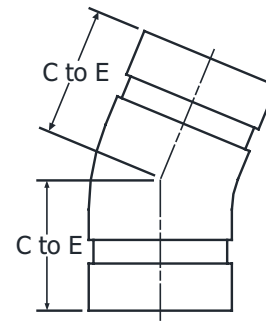
Elbows maximize configurability of piping with standard radius and short patterned options and a range of bend angles.

### FEATURES

- Housing: ASTM A536 65-45-12 Ductile Iron
- Compliance: UL® Listed, C-UL® Listed, FM® Approved
- Maximum Pressure:
  - 1 1/4" – 4" 400 psi
  - 6" – 10" 300 psi
- Paint Color: Red (Optional as Galvanized -GALV)



FP52 | FP52S



FP52-45

SIZE IN.	PART NUMBER	DESCRIPTION	C TO E IN.	WEIGHT LB
<b>90-DEGREE ELBOW - STANDARD RADIUS - MODEL FP52</b>				
1 1/4	114-FP52	1 1/4" Grooved 90-Degree Elbow, UL/FM, 400 psi	2.8	0.9
1 1/2	112-FP52	1 1/2" Grooved 90-Degree Elbow, UL/FM, 400 psi	2.8	1.2
2	2-FP52	2" Grooved 90-Degree Elbow, UL/FM, 400 psi	3.3	1.8
2 1/2	212-FP52	2 1/2" Grooved 90-Degree Elbow, UL/FM, 400 psi	3.7	2.8
3	3-FP52	3" Grooved 90-Degree Elbow, UL/FM, 400 psi	4.3	3.4
4	4-FP52	4" Grooved 90-Degree Elbow, UL/FM, 400 psi	5.0	5.7
6	6-FP52	6" Grooved 90-Degree Elbow, UL/FM, 300 psi	6.5	14.3
8	8-FP52	8" Grooved 90-Degree Elbow, UL/FM, 300 psi	7.8	21.6
<b>90-DEGREE ELBOW - SHORT RADIUS - MODEL FP52S</b>				
1 1/4	114-FP52S	1 1/4" Grooved 90-Degree Elbow, UL/FM, 400 psi, Short Radius	2.4	0.8
1 1/2	112-FP52S	1 1/2" Grooved 90-Degree Elbow, UL/FM, 400 psi, Short Radius	2.4	1.0
2	2-FP52S	2" Grooved 90-Degree Elbow, UL/FM, 400 psi, Short Radius	2.8	1.2
2 1/2	212-FP52S	2 1/2" Grooved 90-Degree Elbow, UL/FM, 400 psi, Short Radius	3.0	2.0
3	3-FP52S	3" Grooved 90-Degree Elbow, UL/FM, 400 psi, Short Radius	3.4	2.5
4	4-FP52S	4" Grooved 90-Degree Elbow, UL/FM, 400 psi, Short Radius	4.0	3.7
6	6-FP52S	6" Grooved 90-Degree Elbow, UL/FM, 300 psi, Short Radius	5.5	9.1
8	8-FP52S	8" Grooved 90-Degree Elbow, UL/FM, 300 psi, Short Radius	6.9	20.5
10	10-FP52S	10" Grooved 90-Degree Elbow, UL/FM, 300 psi, Short Radius	9.0	37.0
<b>45-DEGREE ELBOW - STANDARD RADIUS - MODEL FP52-45</b>				
1 1/4	114-FP52-45	1 1/4" Grooved 45-Degree Elbow, UL/FM, 400 psi	1.7	0.7
1 1/2	112-FP52-45	1 1/2" Grooved 45-Degree Elbow, UL/FM, 400 psi	1.7	0.8
2	2-FP52-45	2" Grooved 45-Degree Elbow, UL/FM, 400 psi	2.0	1.2
2 1/2	212-FP52-45	2 1/2" Grooved 45-Degree Elbow, UL/FM, 400 psi	2.0	1.6
3	3-FP52-45	3" Grooved 45-Degree Elbow, UL/FM, 400 psi	2.5	2.4
4	4-FP52-45	4" Grooved 45-Degree Elbow, UL/FM, 400 psi	3.0	3.8
6	6-FP52-45	6" Grooved 45-Degree Elbow, UL/FM, 300 psi	3.5	8.1
8	8-FP52-45	8" Grooved 45-Degree Elbow, UL/FM, 300 psi	4.3	14.3
10	10-FP52-45	10" Grooved 45-Degree Elbow, UL/FM, 300 psi	4.8	22.0
<b>22.5-DEGREE ELBOW - STANDARD RADIUS - MODEL FP52-22</b>				
1 1/2	112-FP52-22	1 1/2" Grooved 22.5-Degree Elbow, UL/FM, 400 psi	1.7	0.8
2	2-FP52-22	2" Grooved 22.5-Degree Elbow, UL/FM, 400 psi	2.0	1.1
2 1/2	212-FP52-22	2 1/2" Grooved 22.5-Degree Elbow, UL/FM, 400 psi	2.0	1.5
3	3-FP52-22	3" Grooved 22.5-Degree Elbow, UL/FM, 400 psi	2.2	2.5
4	4-FP52-22	4" Grooved 22.5-Degree Elbow, UL/FM, 400 psi	2.9	3.9
6	6-FP52-22	6" Grooved 22.5-Degree Elbow, UL/FM, 300 psi	3.1	7.2
8	8-FP52-22	8" Grooved 22.5-Degree Elbow, UL/FM, 300 psi	3.9	11.9
<b>11.25-DEGREE ELBOW - STANDARD RADIUS - MODEL FP52-11</b>				
1 1/2	112-FP52-11	1 1/2" Grooved 11.25-Degree Elbow, UL/FM, 400 psi	1.4	0.6
2	2-FP52-11	2" Grooved 11.25-Degree Elbow, UL/FM, 400 psi	1.4	0.8
2 1/2	212-FP52-11	2 1/2" Grooved 11.25-Degree Elbow, UL/FM, 400 psi	1.5	1.2
3	3-FP52-11	3" Grooved 11.25-Degree Elbow, UL/FM, 400 psi	1.5	1.6
4	4-FP52-11	4" Grooved 11.25-Degree Elbow, UL/FM, 400 psi	1.9	2.6
6	6-FP52-11	6" Grooved 11.25-Degree Elbow, UL/FM, 300 psi	2.0	4.8

## MODEL FP52GTF – END OF RUN ADAPTER

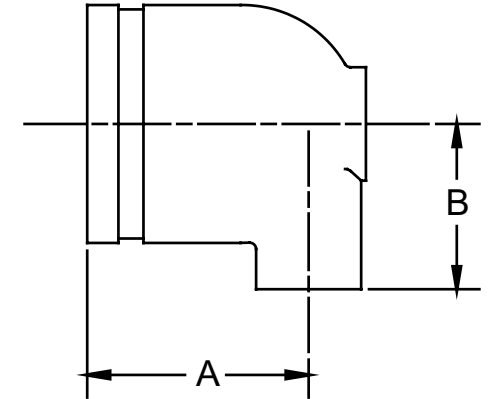


### DESCRIPTION

Grooved End of Run Adapters provide a grooved end cap with a 90° bend and a threaded outlet; commonly used to attach fire sprinklers to the end of a run of sprinkler piping. Threaded bosses can be used for direct connection of hardware.

### FEATURES

- Housing: ASTM A536 65-45-12 Ductile Iron
- Compliance: UL® Listed, C-UL® Listed, FM® Approved
- Maximum Pressure: 300 psi
- Paint Color: Red (Optional as Galvanized -GALV)



SIZE IN.	PART NUMBER	DESCRIPTION	A IN.	B IN.	WEIGHT LB
1 1/4 X 1/2	114X12-FP52GTF	1 1/4" by 1/2" End of Run Elbow, Grooved x Female NPT, UL/FM, 500 psi	1.8	1.2	0.7
1 1/4 X 3/4	114X34-FP52GTF	1 1/4" by 3/4" End of Run Elbow, Grooved x Female NPT, UL/FM, 500 psi	1.8	1.2	0.7
1 1/4 X 1	114X1-FP52GTF	1 1/4" by 1" End of Run Elbow, Grooved x Female NPT, UL/FM, 500 psi	1.9	1.2	0.7
1 1/2 X 1/2	112X12-FP52GTF	1 1/2" by 1/2" End of Run Elbow, Grooved x Female NPT, UL/FM, 500 psi	1.8	1.3	0.9
1 1/2 X 3/4	112X34-FP52GTF	1 1/2" by 3/4" End of Run Elbow, Grooved x Female NPT, UL/FM, 500 psi	1.8	1.3	0.9
1 1/2 X 1	112X1-FP52GTF	1 1/2" by 1" End of Run Elbow, Grooved x Female NPT, UL/FM, 500 psi	1.9	1.3	0.9
2 X 1/2	2X12-FP52GTF	2" by 1/2" End of Run Elbow, Grooved x Female NPT, UL/FM, 500 psi	1.8	1.6	1.1
2 X 3/4	2X34-FP52GTF	2" by 3/4" End of Run Elbow, Grooved x Female NPT, UL/FM, 500 psi	1.8	1.6	1.1
2 X 1	2X1-FP52GTF	2" by 1" End of Run Elbow, Grooved x Female NPT, UL/FM, 500 psi	1.9	1.6	1.1
2 1/2 X 3/4	212X34-FP52GTF	2 1/2" by 3/4" End of Run Elbow, Grooved x Female NPT, UL/FM, 500 psi	1.8	1.8	1.3
2 1/2 X 1	212X1-FP52GTF	2 1/2" by 1" End of Run Elbow, Grooved x Female NPT, UL/FM, 500 psi	1.9	1.8	1.3

## MODEL FP52D – 90 DEGREE ELBOW WITH DRAIN

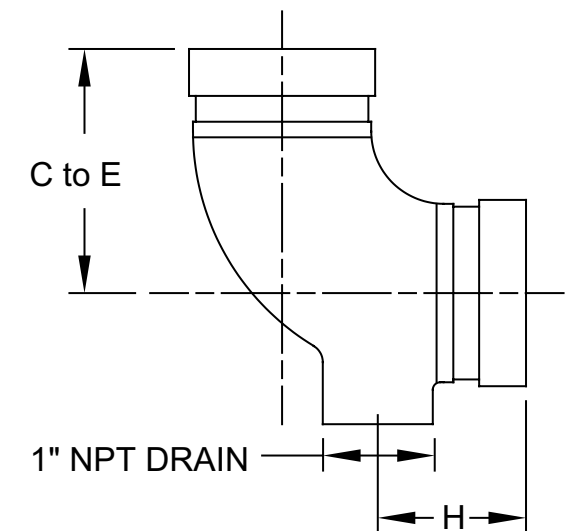


### DESCRIPTION

Drain elbows are designed with an integral 1" NPT drain to meet requirements of vertical pipe systems.

### FEATURES

- Housing: ASTM A536 65-45-12 Ductile Iron
- Compliance: UL® Listed, C-UL® Listed, FM® Approved
- Maximum Pressure:
  - 1 1/4" – 4" 400 psi
  - 6" – 10" 300 psi
- Paint Color: Red (Optional as Galvanized -GALV)



SIZE IN.	PART NUMBER	DESCRIPTION	C TO E IN.	H IN.	WEIGHT LB
2 X 1	2-FP52D	2" Grooved 90-Degree Drain Elbow (1" FNPT), UL/FM, 300 psi	2.8	2.0	1.9
2 1/2 X 1	212-FP52D	2 1/2" Grooved 90-Degree Drain Elbow (1" FNPT), UL/FM, 300 psi	3.0	2.0	2.5
3 X 1	3-FP52D	3" Grooved 90-Degree Drain Elbow (1" FNPT), UL/FM, 300 psi	3.5	2.0	4.4
4 X 1	4-FP52D	4" Grooved 90-Degree Drain Elbow (1" FNPT), UL/FM, 300 psi	4.0	2.0	5.6
6 X 1	6-FP52D	6" Grooved 90-Degree Drain Elbow (1" FNPT), UL/FM, 300 psi	5.5	2.0	12.3

## MODEL FP53 - GROOVED TEE

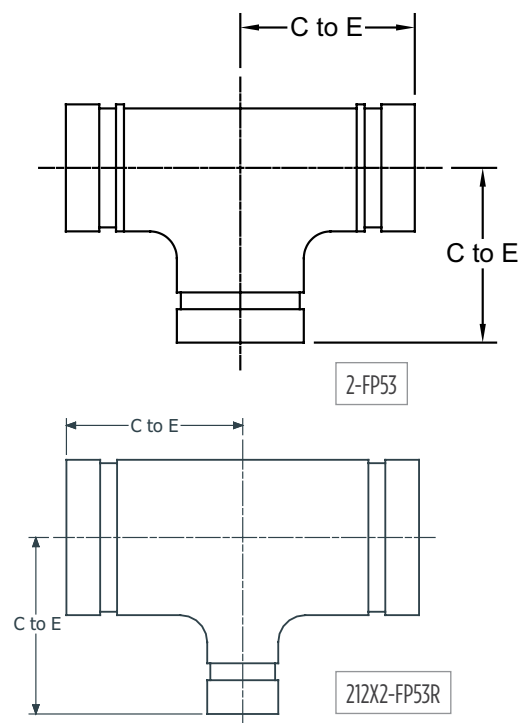


### DESCRIPTION

Tees provide branch connections for grooved pipe. Short-patterned options and reducing branches are available.

### FEATURES

- Housing: ASTM A536 65-45-12 Ductile Iron
- Compliance: UL® Listed, C-UL® Listed, FM® Approved
- Maximum Pressure:
  - 1 1/4" - 4" 400 psi
  - 6" - 10" 300 psi
- Paint Color: Red (Optional as Galvanized -GALV)



## MODEL FP56 - GROOVED CROSS

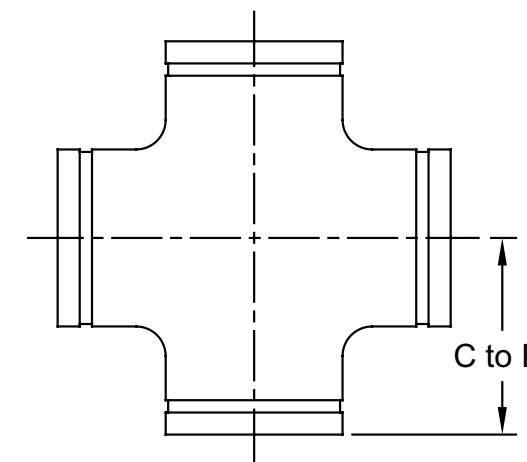


### DESCRIPTION

Crosses are standard grooved fittings to connect runs of pipe in crossing directions.

### FEATURES

- Housing: ASTM A536 65-45-12 Ductile Iron
- Compliance: UL® Listed, C-UL® Listed, FM® Approved
- Maximum Pressure:
  - 2" - 4" 400 psi
  - 6" - 8" 300 psi
- Paint Color: Red (Optional as Galvanized -GALV)



SIZE IN.	PART NUMBER	DESCRIPTION	C TO E IN.	WEIGHT LB
2	2-FP56	2" Grooved Cross, UL/FM, 400 psi	2.8	2.5
2 1/2	212-FP56	2 1/2" Grooved Cross, UL/FM, 400 psi	3.0	3.3
3	3-FP56	3" Grooved Cross, UL/FM, 400 psi	3.4	5.1
4	4-FP56	4" Grooved Cross, UL/FM, 400 psi	4.0	7.2
6	6-FP56	6" Grooved Cross, UL/FM, 300 psi	5.5	16.0
8	8-FP56	8" Grooved Cross, UL/FM, 300 psi	6.9	28.7

\*Not available in Galvanized

SIZE IN.	PART NUMBER	DESCRIPTION	C TO E IN.	WEIGHT LB
<b>GROOVED TEE - MODEL FP53</b>				
1 1/4	114-FP53	1 1/4" Grooved Tee, UL/FM, 400 psi	2.8	1.5
1 1/2	112-FP53	1 1/2" Grooved Tee, UL/FM, 400 psi	2.8	1.7
2	2-FP53	2" Grooved Tee, UL/FM, 400 psi	3.3	2.5
2 1/2	212-FP53	2 1/2" Grooved Tee, UL/FM, 400 psi	3.7	3.7
3	3-FP53	3" Grooved Tee, UL/FM, 400 psi	4.3	6.2
4	4-FP53	4" Grooved Tee, UL/FM, 400 psi	5.0	8.7
6	6-FP53	6" Grooved Tee, UL/FM, 300 psi	6.5	18.2
8	8-FP53	8" Grooved Tee, UL/FM, 300 psi	7.8	33.2
<b>GROOVED TEE, SHORT RADIUS - MODEL FP53</b>				
1 1/4	114-FP53S	1 1/4" Grooved Tee, UL/FM, 400 psi, Short Radius	2.4	1.1
1 1/2	112-FP53S	1 1/2" Grooved Tee, UL/FM, 400 psi, Short Radius	2.4	1.3
2	2-FP53S	2" Grooved Tee, UL/FM, 400 psi, Short Radius	2.8	2.0
2 1/2	212-FP53S	2 1/2" Grooved Tee, UL/FM, 400 psi, Short Radius	3.0	2.8
3	3-FP53S	3" Grooved Tee, UL/FM, 400 psi, Short Radius	3.4	3.9
4	4-FP53S	4" Grooved Tee, UL/FM, 400 psi, Short Radius	4.0	5.7
6	6-FP53S	6" Grooved Tee, UL/FM, 300 psi, Short Radius	5.5	14.1
8	8-FP53S	8" Grooved Tee, UL/FM, 300 psi, Short Radius	6.9	27.1
10	10-FP53S	10" Grooved Tee, UL/FM, 300 psi	9.0	46.3
<b>GROOVED REDUCING BRANCH TEE - MODEL FP53</b>				
2 1/2 X 2	212X2-FP53	2 1/2" by 2" Grooved Reducing Branch Tee, UL/FM, 300 psi	3.0	2.5
3 X 2	3X2-FP53	3" by 2" Grooved Reducing Branch Tee, UL/FM, 300 psi	3.4	3.7
3 X 2 1/2	3X212-FP53	3" by 2 1/2" Grooved Reducing Branch Tee, UL/FM, 300 psi	3.4	3.9
4 X 2	4X2-FP53	4" by 2" Grooved Reducing Branch Tee, UL/FM, 300 psi	4.0	5.4
4 X 2 1/2	4X212-FP53	4" by 2 1/2" Grooved Reducing Branch Tee, UL/FM, 300 psi	4.0	6.2
4 X 3	4X3-FP53	4" by 3" Grooved Reducing Branch Tee, UL/FM, 300 psi	4.0	5.6
6 X 2	6X2-FP53	6" by 2" Grooved Reducing Branch Tee, UL/FM, 300 psi	5.6	13.9
6 X 2 1/2	6X212-FP53*	6" by 2 1/2" Grooved Reducing Branch Tee, UL/FM, 300 psi	5.6	13.7
6 X 3	6X3-FP53	6" by 3" Grooved Reducing Branch Tee, UL/FM, 300 psi	5.6	13.0
6 X 4	6X4-FP53	6" by 4" Grooved Reducing Branch Tee, UL/FM, 300 psi	5.6	12.9
8 X 4	8X4-FP53	8" by 4" Grooved Reducing Branch Tee, UL/FM, 300 psi	7.1	24.5
8 X 6	8X6-FP53	8" by 6" Grooved Reducing Branch Tee, UL/FM, 300 psi	7.1	25.7

\*Not available in Galvanized

## MODEL FP63LTF – MECHANICAL TEE, U-BOLTED, THREADED FEMALE NPT OUTLET

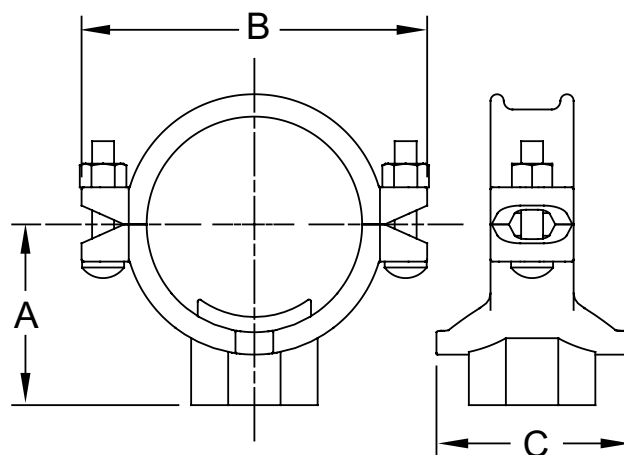


### DESCRIPTION

Mechanical tees provide a fast, convenient mid-pipe branch connections without welding. A hole-locator collar secures the branch position.

### FEATURES

- Housing: ASTM A536 65-45-12 Ductile Iron
- Gasket: Pre-lubricated, Pressure responsive EPDM
- Bolts & Nuts: Grade 8
- Compliance: UL® Listed, C-UL® Listed, FM® Approved
- Maximum Pressure: 300 psi
- Paint Color: Red (Optional as Galvanized -GALV)



SIZE IN.	PART NUMBER	DESCRIPTION	A IN.	B IN.	C IN.	WEIGHT LB
1 X 1/2	1X12-FP63LTF*	1" by 1/2" Mechanical Tee, U-Bolt clamp, Female NPT Outlet, UL/FM, 300 psi	1.9	3.0	1.7	0.6
1 X 3/4	1X34-FP63LTF*	1" by 3/4" Mechanical Tee, U-Bolt clamp, Female NPT Outlet, UL/FM, 300 psi	2.3	3.3	1.7	0.8
1 1/4 X 1/2	114X12-FP63LTF	1 1/4" by 1/2" Mechanical Tee, U-Bolt clamp, Female NPT Outlet, UL/FM, 300 psi	1.7	3.5	2.2	0.8
1 1/4 X 3/4	114X34-FP63LTF	1 1/4" by 3/4" Mechanical Tee, U-Bolt clamp, Female NPT Outlet, UL/FM, 300 psi	1.8	3.5	2.2	0.9
1 1/4 X 1	114X1-FP63LTF	1 1/4" by 1" Mechanical Tee, U-Bolt clamp, Female NPT Outlet, UL/FM, 300 psi	2.0	3.5	2.2	1.0
1 1/2 X 1/2	112X12-FP63LTF	1 1/2" by 1/2" Mechanical Tee, U-Bolt clamp, Female NPT Outlet, UL/FM, 300 psi	1.7	3.7	2.3	0.8
1 1/2 X 3/4	112X34-FP63LTF	1 1/2" by 3/4" Mechanical Tee, U-Bolt clamp, Female NPT Outlet, UL/FM, 300 psi	2.1	3.7	2.3	0.9
1 1/2 X 1	112X1-FP63LTF	1 1/2" by 1" Mechanical Tee, U-Bolt clamp, Female NPT Outlet, UL/FM, 300 psi	2.3	3.7	2.3	1.0
2 X 1/2	2X12-FP63LTF	2" by 1/2" Mechanical Tee, U-Bolt clamp, Female NPT Outlet, UL/FM, 300 psi	2.1	3.7	2.3	0.8
2 X 3/4	2X34-FP63LTF	2" by 3/4" Mechanical Tee, U-Bolt clamp, Female NPT Outlet, UL/FM, 300 psi	2.2	3.8	2.3	0.9
2 X 1	2X1-FP63LTF	2" by 1" Mechanical Tee, U-Bolt clamp, Female NPT Outlet, UL/FM, 300 psi	2.6	3.8	2.3	1.0
2 1/2 X 1/2	212X12-FP63LTF	2 1/2" by 1/2" Mechanical Tee, U-Bolt clamp, Female NPT Outlet, UL/FM, 300 psi	2.4	4.3	2.3	1.0
2 1/2 X 3/4	212X34-FP63LTF	2 1/2" by 3/4" Mechanical Tee, U-Bolt clamp, Female NPT Outlet, UL/FM, 300 psi	2.5	4.3	2.3	1.1
2 1/2 X 1	212X1-FP63LTF	2 1/2" by 1" Mechanical Tee, U-Bolt clamp, Female NPT Outlet, UL/FM, 300 psi	2.8	4.3	2.3	1.0

\*Not available in Galvanized

## MODEL FP63TF – MECHANICAL TEE, THREADED FEMALE NPT OUTLET

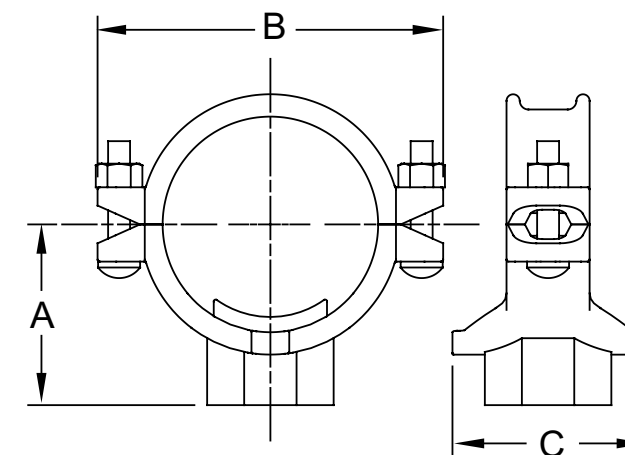


### DESCRIPTION

Mechanical tees provide a fast, convenient mid-pipe branch connections without welding. A hole-locator collar secures the branch position.

### FEATURES

- Housing: ASTM A536 65-45-12 Ductile Iron
- Gasket: Pre-lubricated, Pressure responsive EPDM
- Bolts & Nuts: Grade 8
- Compliance: UL® Listed, C-UL® Listed, FM® Approved
- Maximum Pressure: 300 psi
- Paint Color: Red (Optional as Galvanized -GALV)



SIZE IN.	PART NUMBER	DESCRIPTION	A IN.	B IN.	C IN.	WEIGHT LB
2 X 1	2X1-FP63TF	2" by 1" Mechanical Tee, Female NPT Outlet, UL/FM, 300 psi	2.2	4.6	2.7	1.5
2 X 1 1/4	2X114-FP63TF	2" by 1 1/4" Mechanical Tee, Female NPT Outlet, UL/FM, 300 psi	2.2	4.6	2.8	1.7
2 X 1 1/2	2X112-FP63TF	2" by 1 1/2" Mechanical Tee, Female NPT Outlet, UL/FM, 300 psi	2.2	4.6	2.8	1.9
2 1/2 X 1	212X1-FP63TF	2 1/2" by 1" Mechanical Tee, Female NPT Outlet, UL/FM, 300 psi	2.6	5.7	3.1	2.0
2 1/2 X 1 1/4	212X114-FP63TF	2 1/2" by 1 1/4" Mechanical Tee, Female NPT Outlet, UL/FM, 300 psi	2.6	5.7	3.3	2.4
2 1/2 X 1 1/2	212X112-FP63TF	2 1/2" by 1 1/2" Mechanical Tee, Female NPT Outlet, UL/FM, 300 psi	2.4	5.7	3.3	2.3
3 X 1	3X1-FP63TF	3" by 1" Mechanical Tee, Female NPT Outlet, UL/FM, 300 psi	2.9	6.0	3.0	2.5
3 X 1 1/4	3X114-FP63TF	3" by 1 1/4" Mechanical Tee, Female NPT Outlet, UL/FM, 300 psi	3.0	6.0	3.3	2.5
3 X 1 1/2	3X112-FP63TF	3" by 1 1/2" Mechanical Tee, Female NPT Outlet, UL/FM, 300 psi	2.9	6.0	3.6	2.6
3 X 2	3X2-FP63TF	3" by 2" Mechanical Tee, Female NPT Outlet, UL/FM, 300 psi	3.1	6.0	3.9	3.0
4 X 1	4X1-FP63TF	4" by 1" Mechanical Tee, Female NPT Outlet, UL/FM, 300 psi	3.5	7.4	3.0	2.9
4 X 1 1/4	4X114-FP63TF	4" by 1 1/4" Mechanical Tee, Female NPT Outlet, UL/FM, 300 psi	3.7	7.4	3.3	3.3
4 X 1 1/2	4X112-FP63TF	4" by 1 1/2" Mechanical Tee, Female NPT Outlet, UL/FM, 300 psi	3.7	7.4	3.6	3.3
4 X 2	4X2-FP63TF	4" by 2" Mechanical Tee, Female NPT Outlet, UL/FM, 300 psi	3.7	7.1	4.1	3.5
4 X 2 1/2	4X212-FP63TF	4" by 2 1/2" Mechanical Tee, Female NPT Outlet, UL/FM, 300 psi	3.8	7.4	4.8	3.6
4 X 3	4X3-FP63TF	4" by 3" Mechanical Tee, Female NPT Outlet, UL/FM, 300 psi	3.7	7.4	4.9	4.8
6 X 1	6X1-FP63TF	6" X 1" Mechanical Tee, Female NPT Outlet, UL/FM, 300 psi	4.7	9.7	3.0	5.3
6 X 1 1/4	6X114-FP63TF	6" by 1 1/4" Mechanical Tee, Female NPT Outlet, UL/FM, 300 psi	4.7	9.7	3.2	5.3
6 X 1 1/2	6X112-FP63TF	6" by 1 1/2" Mechanical Tee, Female NPT Outlet, UL/FM, 300 psi	4.7	9.7	6.6	5.8
6 X 2	6X2-FP63TF	6" by 2" Mechanical Tee, Female NPT Outlet, UL/FM, 300 psi	4.7	9.8	4.3	6.0
6 X 2 1/2	6X212-FP63TF	6" by 2 1/2" Mechanical Tee, Female NPT Outlet, UL/FM, 300 psi	4.8	9.8	4.3	5.3
6 X 3	6X3-FP63TF	6" by 3" Mechanical Tee, Female NPT Outlet, UL/FM, 300 psi	4.7	9.7	5.4	7.3
8 X 2	8X2-FP63TF	8" by 2" Mechanical Tee, Female NPT Outlet, UL/FM, 300 psi	5.7	12.2	3.8	7.5



## MODEL FP63G – MECHANICAL TEE, GROOVED BRANCH

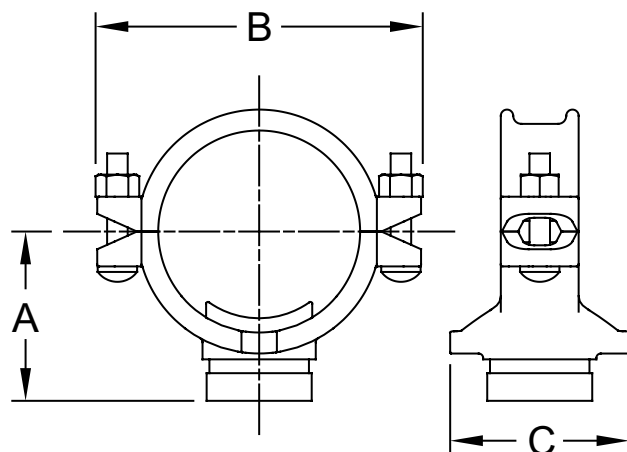


### DESCRIPTION

Mechanical tees provide a fast, convenient mid-pipe branch connections without welding. A hole-locator collar secures the branch position.

### FEATURES

- Housing: ASTM A536 65-45-12 Ductile Iron
- Gasket: Pre-lubricated, Pressure responsive EPDM
- Bolts & Nuts: Grade 8
- Compliance: UL® Listed, C-UL® Listed, FM® Approved
- Maximum Pressure: 300 psi
- Paint Color: Red (Optional as Galvanized -GALV)



SIZE IN.	PART NUMBER	DESCRIPTION	A IN.	B IN.	C IN.	WEIGHT LB
2 X 1 1/4	2X114-FP63G	2" by 1 1/4" Mechanical Tee, Grooved Outlet, UL/FM, 300 psi	2.6	4.6	2.8	1.8
2 1/2 X 1 1/4	212X114-FP63G	2 1/2" by 1 1/4" Mechanical Tee, Grooved Outlet, UL/FM, 300 psi	2.6	5.7	3.3	2.5
2 1/2 X 1 1/2	212X112-FP63G	2 1/2" by 1 1/2" Mechanical Tee, Grooved Outlet, UL/FM, 300 psi	3.0	5.7	3.3	2.5
3 X 1 1/4	3X114-FP63G	3" by 1 1/4" Mechanical Tee, Grooved Outlet, UL/FM, 300 psi	3.3	6.0	3.3	2.5
3 X 1 1/2	3X112-FP63G	3" by 1 1/2" Mechanical Tee, Grooved Outlet, UL/FM, 300 psi	3.3	6.0	3.3	2.9
3 X 2	3X2-FP63G	3" by 2" Mechanical Tee, Grooved Outlet, UL/FM, 300 psi	3.3	6.0	4.0	3.2
4 X 1 1/4	4X114-FP63G	4" by 1 1/4" Mechanical Tee, Grooved Outlet, UL/FM, 300 psi	3.9	7.1	3.0	3.4
4 X 1 1/2	4X112-FP63G	4" by 1 1/2" Mechanical Tee, Grooved Outlet, UL/FM, 300 psi	3.9	7.1	3.3	3.2
4 X 2	4X2-FP63G	4" by 2" Mechanical Tee, Grooved Outlet, UL/FM, 300 psi	3.9	7.1	4.1	3.3
4 X 2 1/2	4X212-FP63G	4" by 2 1/2" Mechanical Tee, Grooved Outlet, UL/FM, 300 psi	3.9	7.1	4.1	4.6
4 X 3	4X3-FP63G	4" by 3" Mechanical Tee, Grooved Outlet, UL/FM, 300 psi	3.8	7.4	4.9	4.6
6 X 1 1/4	6X114-FP63G	6" by 1 1/4" Mechanical Tee, Grooved Outlet, UL/FM, 300 psi	4.7	9.7	3.2	5.5
6 X 1 1/2	6X112-FP63G	6" by 1 1/2" Mechanical Tee, Grooved Outlet, UL/FM, 300 psi	4.7	9.7	6.6	5.6
6 X 2	6X2-FP63G	6" by 2" Mechanical Tee, Grooved Outlet, UL/FM, 300 psi	4.9	9.8	4.3	6.2
6 X 2 1/2	6X212-FP63G	6" by 2 1/2" Mechanical Tee, Grooved Outlet, UL/FM, 300 psi	4.9	9.8	4.3	5.3
6 X 3	6X3-FP63G	6" by 3" Mechanical Tee, Grooved Outlet, UL/FM, 300 psi	5.0	9.7	5.4	7.6
8 X 2	8X2-FP63G	8" by 2" Mechanical Tee, Grooved Outlet, UL/FM, 300 psi	6.0	12.2	5.1	7.5
8 X 2 1/2	8X212-FP63G	8" by 2 1/2" Mechanical Tee, Grooved Outlet, UL/FM, 300 psi	6.0	12.2	4.6	7.7
8 X 3	8X3-FP63G	8" by 3" Mechanical Tee, Grooved Outlet, UL/FM, 300 psi	6.0	12.2	5.4	8.3
8 X 4	8X4-FP63G	8" by 4" Mechanical Tee, Grooved Outlet, UL/FM, 300 psi	6.0	12.2	6.4	9.1

\*Not available in Galvanized

## GENERAL TERMS AND CONDITIONS

### Zurn Terms and Conditions for the United States

#### PRICE AND TERMS OF PAYMENT

Terms are net, payable 30 days from date of invoice. Zurn Credit must be identified of potential pricing errors within 30 days of invoice date. Shortage claims must be reported within 10 working days of receiving product to your local Zurn Rep or Zurn Customer Care. The Buyer shall pay all sales, consumers, or other applicable taxes. A 1-1/2% monthly (18% annual) service charge will be added to the outstanding balance of all past due invoices.

Minimum invoice \$250.00. Zurn Industries, LLC ("Zurn") reserves the right to apply a minimum order charge in order to meet the \$250.00 minimum invoice requirement. All orders are subject to credit approval by the Zurn Credit Department prior to the acceptance of an order. Orders may be refused, delivery may be withheld, or shipment stopped in transit without any liability on Zurn's part at Zurn's sole discretion based upon Buyer's credit worthiness as determined by Zurn.

#### FREIGHT

All sales are F.O.B. seller's location. Zurn will allow full freight allowance when any of the following conditions are met: 1) Plumbing Fixtures only orders totaling \$10,000 or more; 2) Zurn One Systems orders of \$7,500 or more; 3) Any combination of Linear Drainage and/or Stainless Drains orders of \$5,000 or more; 4) Any combination of Specification Drainage, Finish Plumbing, and/or Zurn Wilkins of \$5,000 or more; 5) Commercial Drainage only orders of \$3,500 or more; 6) PEX orders of \$3,000 or more. This full freight allowance applies when the shipment is within the continental United States and has a single destination of a Buyer's standard address or job location. Routing of shipment shall be determined at the sole discretion of Zurn. Shipping dates are estimates and time of delivery shall not be of the essence of this sale contract. Under no circumstances will the Seller have any responsibility on account of any delays in manufacture, transportation, or otherwise. Terms of Export Shipment on application.

**NOTE:** Shipments in excess of 90" long or 3,000 lbs may be subject to additional charges, and shall be defined as an oversized and/or overweight product and Zurn's standard FFA terms may not apply. Please contact our Customer Service Department for guidance on potential additional shipping charges. This new policy supersedes any existing agreements.

These charges and restrictions apply in addition to Zurn standard terms and conditions for sale unless otherwise agreed upon by the parties.

#### LIMITED WARRANTY

Zurn goods sold hereunder are warranted to be free from defects in material and factory workmanship for the period of time from the date of purchase: AquaVantage® Flush Valves, AquaFlush® Flush Valves, Commercial Fixtures, Faucets, Showers, and Tubular Brass: three years; Chemical Drainage, Linear Drainage, Commercial Drainage, Specification Drainage, Zurn Wilkins, and Flush Valve, Faucets, and Tubular Brass decorative finishes: one year; PHIX® Cartridge: ten years; FOG-ceptor®: thirty years. Where permitted by law, **THE IMPLIED WARRANTY OF MERCHANTABILITY IS LIMITED TO THE ABOVE IDENTIFIED PERIOD OF TIME AND SHALL BE LIMITED SOLELY TO THE REPLACEMENT OF THE DEFECTIVE GOODS.** A damaged/broken test cock or ball valve is not considered defective. Please contact Zurn Customer Care for assistance.

Zurn will replace goods at no cost that prove defective provided Zurn is notified in writing of such defect and the goods are returned prepaid at the specified Zurn location with evidence that they have been properly maintained and used in accordance with instructions. **ZURN SHALL NOT BE RESPONSIBLE FOR ANY LABOR CHARGES OR ANY LOSS, INJURY, OR DAMAGES WHATSOEVER, INCLUDING, BUT NOT LIMITED TO, INCIDENTAL OR CONSEQUENTIAL DAMAGES.** The sole and exclusive remedy shall be limited to the replacement of the defective goods. Before installation and use, the purchaser shall determine the suitability of the product for his intended use and the purchaser assumes all risk and liability whatever in the connection therewith. All weights stated in Zurn catalogs and lists are approximate and are not guaranteed.

#### RETURNED GOODS

Standard cataloged material may be returned only with the written permission of Zurn. Returned goods are subject to a 25% restocking charge of total saleable material returned, plus the cost of reconditioning, if necessary, to make material sellable. Transportation charges are the responsibility of the Buyer. Credit allowance will be in the form of merchandise credit only – not cash credit. The value of the return must total at least \$100.00 to qualify for credit allowance. No credit will be allowed for parts unless originally ordered and invoiced as parts. No credit will be allowed for discontinued or made-to-order items. Items that have been specially made are not subject to return or cancellation except by special negotiation. Material must be returned within one year of invoice date for credit to be issued for Commercial Fixtures, Flush Valve Products, Specification Drainage, Tubular Brass, Zurn Wilkins, Chemical Drainage, Linear Drainage, and Commercial Drainage. No credit is allowed for Linear Drainage products that have been cut and Specification Drainage product with auxiliary tappings. Flush Valve material over one year old will be subject to a 50% handling charge. Flush Valve material over five years old will not be accepted. Commercial Drainage and Specification Drainage galvanized material will be credited at value of Dura-Coated cast iron, and chrome-plated at value of bronze. Zurn Wilkins damaged/broken test cocks or ball valves are not considered defective.

#### ILLUSTRATIONS OF TYPICAL INSTALLATIONS

The typical installations for various products found in each product section are intended to illustrate the products and potential options for the use of these products. Under no circumstances are they to be construed as recommended installation procedures. Consult local codes and project specifications for proper installation instructions.

#### SHORTAGE/DAMAGE CLAIMS

Notification of material shortages or incorrect filling of orders must be made to Zurn within 10 days of receipt. No claims over three months old will be honored. Buyer agrees to make all complaints for damage in transit or "short count" directly to the carrier; before the contents are unloaded have the carrier agent's acknowledgment of such damage noted on the bill of lading and to present to the carrier its agent's acknowledgment of such damaged material with formal claim covering said damage.

#### GENERAL

Zurn reserves the right to make changes in design or equipment of any item or product without incurring any obligation on previously sold items, and to discontinue items at any time, without notice. Possession of this Catalog or other sales literature is not to be construed as an offer to sell. All orders are subject to acceptance by Zurn. Catalog printed in U.S.A.

Zurn flush valves are designed to comply with Army Corp of Engineers and Naval guide specifications, Military Specification MIL.V.29193 and Federal Specification WWP541.

Zurn flush valves comply with the following standards: ASME A112.18.1/CSA B125.1, A112.19.5, A112.19.2, A112.19.6, ASSE 1037 and 101 are listed by the following agencies: Canadian Standards, IAPMO/UPC/CUPC, and CSA 125.3. Zurn flush valves are manufactured from dezincification resistant alloys. For additional compliances, contact Zurn Industries, LLC, Finish Plumbing Operation, or 1-800-997-3876.

Zurn is not responsible for typographical errors. The contents of this guide are subject to revision without notice.

© 2024 Zurn Industries, LLC Items in this guide may be covered by U.S. and foreign Patents and Patents Pending. Registered Trademarks.

## GENERAL TERMS AND CONDITIONS

### Zurn Terms and Conditions for Canada

#### PRICE AND TERMS OF PAYMENT

Terms are net, payable 30 days from date of invoice. Zurn Credit must be identified of potential pricing errors within 30 days of invoice date. Shortage claims must be reported within 10 working days of receiving product to your local Zurn Rep or Zurn Customer Care. The Buyer shall pay all sales, consumers, or other applicable taxes. A 1-½% monthly (18% annual) service charge will be added to the outstanding balance of all past due invoices.

Minimum invoice \$100.00. Zurn Industries, LLC ("Zurn") reserves the right to apply a minimum order charge in order to meet the \$100.00 minimum invoice requirement. All orders are subject to credit approval by the Zurn Credit Department prior to the acceptance of an order. Orders may be refused, delivery may be withheld, or shipment stopped in transit without any liability on Zurn's part at Zurn's sole discretion based upon Buyer's credit worthiness as determined by Zurn.

#### FREIGHT

Zurn Canada is pleased to provide an industry-leading \$3,500 combined prepaid freight amount, not including Zurn Green Turtle product sales.

All sales are F.O.B. seller's location. Routing of shipment shall be determined at the sole discretion of Zurn. Shipping dates are estimates and time of delivery shall not be of the essence of this sale contract. Under no circumstances will the Seller have any responsibility on account of any delays in manufacture, transportation, or otherwise.

**NOTE:** Any product dimension larger than 92" or any single item weighing more than 3,500 lb, shall be defined as an oversized and/or overweight product and Zurn's standard FFA terms may not apply. Please contact our customer service department for guidance on potential additional shipping charges.

These charges and restrictions apply in addition to Zurn standard terms and conditions for sale unless otherwise agreed upon by the parties.

#### LIMITED WARRANTY

Zurn goods sold hereunder are warranted to be free from defects in material and factory workmanship for the period of time from the date of purchase: AquaVantage® Flush Valves, AquaFlush® Flush Valves, Commercial Fixtures, Faucets, Showers, and Tubular Brass: three years; Chemical Drainage, Trench Drainage, Commercial Drainage, Specification Drainage, Zurn Wilkins, and Flush Valve and Tubular Brass decorative finishes: one year, PHIX® Cartridge ten years. Where permitted by law, **THE IMPLIED WARRANTY OF MERCHANTABILITY IS LIMITED TO THE ABOVE IDENTIFIED PERIOD OF TIME AND SHALL BE LIMITED SOLELY TO THE REPLACEMENT OF THE DEFECTIVE GOODS.** A damaged/broken test cock or ball valve is not considered defective. Please contact Zurn Customer Care for assistance.

Zurn will replace goods at no cost that prove defective provided Zurn is notified in writing of such defect and the goods are returned prepaid at the specified Zurn location with evidence that they have been properly maintained and used in accordance with instructions. **ZURN SHALL NOT BE RESPONSIBLE FOR ANY LABOR CHARGES OR ANY LOSS, INJURY, OR DAMAGES WHATSOEVER, INCLUDING, BUT NOT LIMITED TO, INCIDENTAL OR CONSEQUENTIAL DAMAGES.** The sole and exclusive remedy shall be limited to the replacement of the defective goods. Before installation and use, the purchaser shall determine the suitability of the product for his intended use and the purchaser assumes all risk and liability whatever in the connection therewith. All weights stated in Zurn catalogs and lists are approximate and are not guaranteed.

#### RETURNED GOODS

Standard cataloged material may be returned only with the written permission of Zurn. Returned goods are subject to a 25% restocking charge of total saleable material returned, plus the cost of reconditioning, if necessary, to make material sellable. Transportation charges are the responsibility of the Buyer. The value of the return must total at least \$100.00 to qualify for credit allowance. No credit will be allowed for parts unless originally ordered and invoiced as parts. No credit will be allowed for discontinued or made-to-order items. Items that have been specially made are not subject to return or cancellation except by special negotiation. Material must be returned within one year of invoice date for credit to be issued. Commercial Drainage and Specification Drainage galvanized material will be credited at value of Dura-Coated cast iron, and chrome plated at value of bronze. Zurn Wilkins damaged/broken test cocks or ball valves are not considered defective.

#### ILLUSTRATIONS OF TYPICAL INSTALLATIONS

The typical installations for various products found in each product section are intended to illustrate the products and potential options for the use of these products. Under no circumstances are they to be construed as recommended installation procedures. Consult local codes and project specifications for proper installation instructions.

#### SHORTAGE/DAMAGE CLAIMS

Notification of material shortages or incorrect filling of orders must be made to Zurn within 10 days of receipt. No claims over three months old will be honored. Buyer agrees to make all complaints for damage in transit or "short count" directly to the carrier; before the contents are unloaded have the carrier agent's acknowledgment of such damage noted on the bill of lading and to present to the carrier its agent's acknowledgment of such damaged material with formal claim covering said damage.

#### GENERAL

Zurn reserves the right to make changes in design or equipment of any item or product without incurring any obligation on previously sold items, and to discontinue items at any time, without notice. Possession of this Catalog or other sales literature is not to be construed as an offer to sell. All orders are subject to acceptance by Zurn. Catalog printed in U.S.A.

Zurn flush valves are designed to comply with Army Corp of Engineers and Naval guide specifications, Military Specification MIL.V.29193 and Federal Specification WWP541.

Zurn flush valves comply with the following standards: ASME A112.18.1/CSA B125.1, A112.19.5, A112.19.2, A112.19.6, ASSE 1037 and 101 are listed by the following agencies: Canadian Standards, IAPMO/UPC/CUPC, and CSA 125.3. Zurn flush valves are manufactured from dezincification resistant alloys. For additional compliances, contact Zurn Industries, LLC, Commercial Brass Operation, or 1-800-997-3876.

Zurn is not responsible for typographical errors. The contents of this guide are subject to revision without notice.

© 2024 Zurn Industries, LLC Items in this guide may be covered by U.S. and foreign Patents and Patents Pending. Registered Trademarks.

