

MODEL 350AST

Stainless Steel Double Check – Backflow Preventers 2-1/2" to 10"



Repair Kit Components		2-1/2"	3" and 4"	2-1/2" - 6"				6"				8"		8" and 10"		10"			
Size Range		RK212-350ASTCK2	RK4-350ASTCK2	RK4-350	RK4-350ASTCK1	RK4-350AST-COVRPLATE	BRK4-SSLBF-SEATIRTNR	BRK4-SSLBF-SEATZRTNTR	RK6-350	RK6-350ASTCK1	RK6-350ASTCK2	BRK6-SSLBF-SEATIRTNR	BRK6-SSLBF-SEATZRTNTR	RK8-350ASTCK1	RK8-350ASTCK2	RK8-350	RK8-350-COVRPLATE	RK10-350ASTCK1	RK10-350ASTCK2
2-1/2"		•		•	•	•	•	•											
3"			•	•	•	•	•	•											
4"			•	•	•	•	•	•											
6"									•	•	•	•	•						
8"														•	•	•	•		
10"															•	•	•	•	•
Item #	Item Description																		
1	O-Ring, Cover Plate					•												•	
2	Cover Plate					•												•	
3	Bolt, Cover Plate					•(x2)												•(x2)	
4	Seat Retainer #1						•(x6)		•		•(x6)								
5	Seat Retainer #2		•(x2)					•(x6)		•		•(x6)							
6	O-Ring, Seat	•	•	•(x2)	•			•(x2)	•	•				•	•	•(x2)		•	•
7	Bolt, Poppet Retainer	•(x4)	•(x4)		•(x4)				•(x4)	•(x4)				•(x6)	•(x6)			•(x6)	•(x6)
8	Handle, #1 Poppet Assembly				•				•										
9	Washer	•(x4)	•(x4)		•(x4)				•(x4)	•(x4)				•(x6)	•(x6)			•(x6)	•(x6)
10	O-Ring, Retainer	•(x4)	•(x4)	•(x8)	•(x4)			•(x8)	•(x4)	•(x4)				•(x6)	•(x6)	•(x12)		•(x6)	•(x6)
11	Poppet Retainer	•	•		•				•	•				•	•			•	•
12	Seal Ring	•	•	•(x2)	•			•(x2)	•	•				•	•	•(x2)		•	•
13	Seat Assembly, #1 Poppet				•				•					•				•	
14	Seat Assembly, #2 Poppet	•	•							•				•				•	•
15	Washer, Seat Retainer													•(x4)	•(x7)			•(x4)	•(x7)
16	Nut, Seat Retainer													•(x4)	•(x7)			•(x4)	•(x7)

Whole Goods (Available for individual sale)

Item #	Item Description	2-1/2"	3"	4"	6"	8"	10"
17	Gate Valve, NRS (GxG)	212-48G	3-48G	4-48G	6-48G	8-48G	10-48G
	Gate Valve, NRS (GxF)	212-48GXF	3-48GXF	4-48GXF	6-48GXF	8-48GXF	10-48GXF
	Gate Valve, OS&Y (GxG)	212-48OSYG	3-48OSYG	4-48OSYG	6-48OSYG	8-48OSYG	10-48OSYG
	Gate Valve, OS&Y (GxF)	212-48OSYGXF	3-48OSYGXF	4-48OSYGXF	6-48OSYGXF	8-48OSYGXF	10-48OSYGXF
	Butterfly Valve (GxG)	212-49G	3-49G	4-49G	6-49G	8-49G	10-49G
	Butterfly Valve (GxF)	212-49GXF	3-49GXF	4-49GXF	6-49GXF	8-49GXF	10-49GXF
18	Ball Valve, FxF		12-85OXL			34-85OXL	
19	Ball Valve, MxF		12-85OMXL			34-85OMXL	
20	Cover Retainer Assembly		6-23		8-23		12-23
21	Grooved Coupling	212-23	3-23	4-23	6-23	8-23	10-23
22	Cover		3509ST-3		3510ST-3		3511ST-3

Item No.	Repair Kit Description
2-1/2"	
RK212-350ASTCK2	#2 Check Assembly Repair Kit, 2-1/2" 350AST
3" and 4"	
RK4-350ASTCK2	#2 Check Assembly Repair Kit, 3" - 4" 350AST
2-1/2" - 6"	
RK4-350	Standard Repair Kit, 2-1/2" - 4" 350AST
RK4-350ASTCK1	#1 Check Assembly Repair Kit, 2-1/2" - 4" 350AST
RK4-350AST-COVRPLATE	Cover Plate Repair Kit, 2-1/2" - 4" 350AST
BRK4-SSLBF-SEATIRTNR	Bulk #1 Seat Retainer Repair Kit, 2-1/2" - 4" 350AST
BRK4-SSLBF-SEATZRTNTR	Bulk #2 Seat Retainer Repair Kit, 2-1/2" - 4" 350AST
6"	
RK6-350	Standard Repair Kit, 6" 350AST
RK6-350ASTCK1	#1 Check Assembly Repair Kit, 6" 350AST
RK6-350ASTCK2	#2 Check Assembly Repair Kit, 6" 350AST
BRK6-SSLBF-SEATIRTNR	Bulk #1 Seat Retainer Repair Kit, 6" 350AST
BRK6-SSLBF-SEATZRTNTR	Bulk #2 Seat Retainer Repair Kit, 6" 350AST

Item No.	Repair Kit Description
8"	
RK8-350ASTCK1	#1 Check Assembly Repair Kit, 8" 350AST
RK8-350ASTCK2	#2 Check Assembly Repair Kit, 8" 350AST
8" and 10"	
RK8-350	Standard Repair Kit, 8" - 10" 350AST
RK8-350AST-COVRPLATE	Cover Plate Repair Kit, 8" - 10" 350AST
10"	
RK10-350ASTCK1	#1 Check Assembly Repair Kit, 10" 350AST
RK10-350ASTCK2	#2 Check Assembly Repair Kit, 10" 350AST

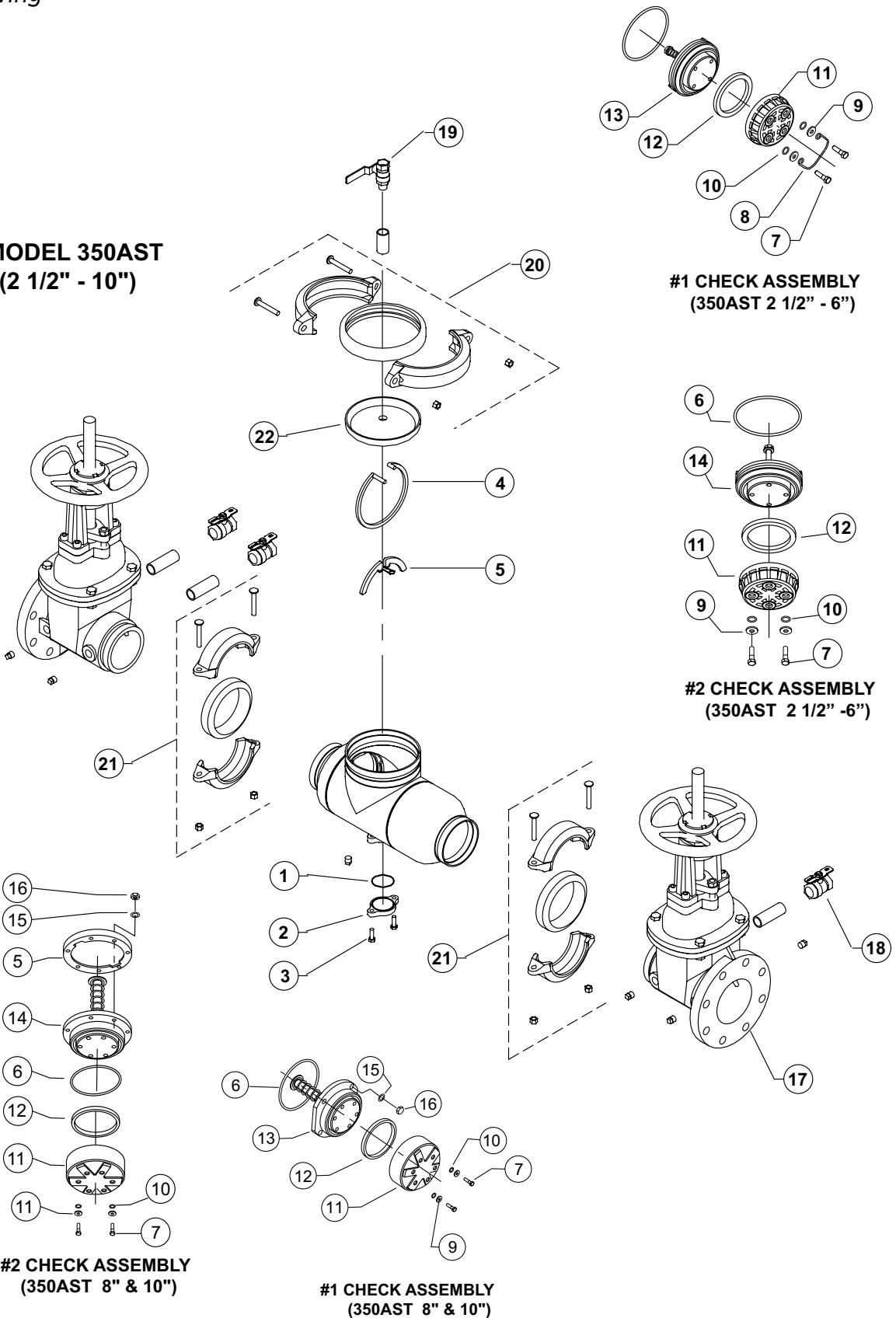
MODEL 350AST

Stainless Steel Double Check – Backflow Preventers 2-1/2" to 10"

Parts Drawing



**MODEL 350AST
(2 1/2" - 10")**



**#2 CHECK ASSEMBLY
(350AST 8" & 10")**

**#1 CHECK ASSEMBLY
(350AST 8" & 10")**

**#1 CHECK ASSEMBLY
(350AST 2 1/2" - 6")**

**#2 CHECK ASSEMBLY
(350AST 2 1/2" - 6")**