

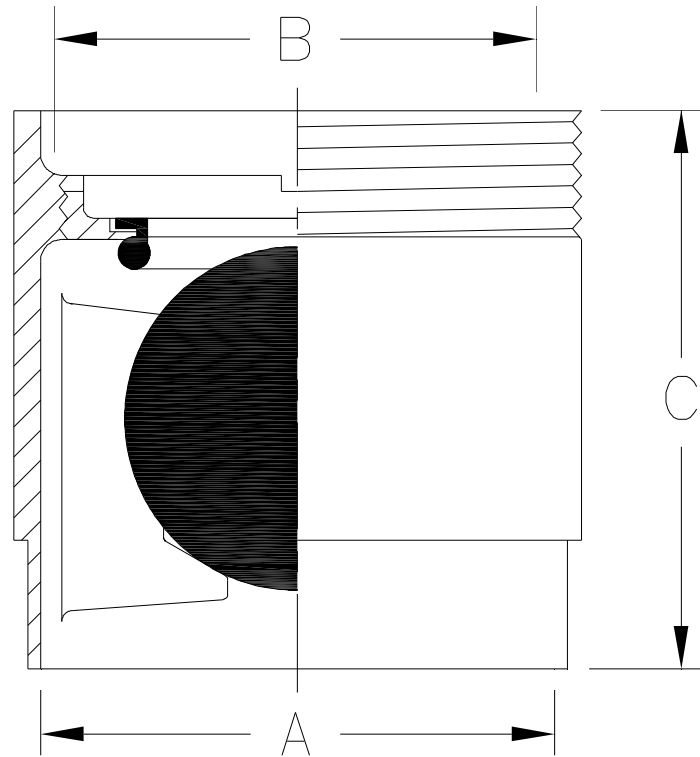


Z1099
BACKWATER VALVE
BALL FLOAT TYPE

SPECIFICATION SHEET

TAG _____

Dimensional Data (inches and [mm]) are Subject to Manufacturing Tolerances and Change Without Notice



Dimensions In Inches[mm]			Approx. Wt. Lbs. [kg]
Pipe Size		C	
A	B		
3 [76]	3 [76]	6-1/2 [165]	7 [3]
4 [102]	4 [102]		9 [4]
6 [152]	6 [152]		25 [11]

ENGINEERING SPECIFICATION: ZURN Z1099
 Backwater Valve, Dura-Coated cast iron body, plastic ball float, bronze backwater bushing and replaceable neoprene seat.

CONNECTIONS (Check/specify appropriate options)

PIPE SIZE

3, 4, 6 [76, 102, 152]
 3, 4, 6 [76, 102, 152]

(Specify size/type) **CONNECTION**

___ IP X NH Threaded x No-Hub
 ___ NH X NH No-Hub x No-Hub

PREFIXES

___ Z D.C.C.I. Body*

SUFFIXES

___ -G Galvanized Cast Iron

* Regularly furnished unless otherwise specified.