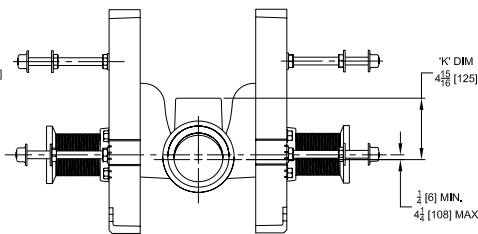
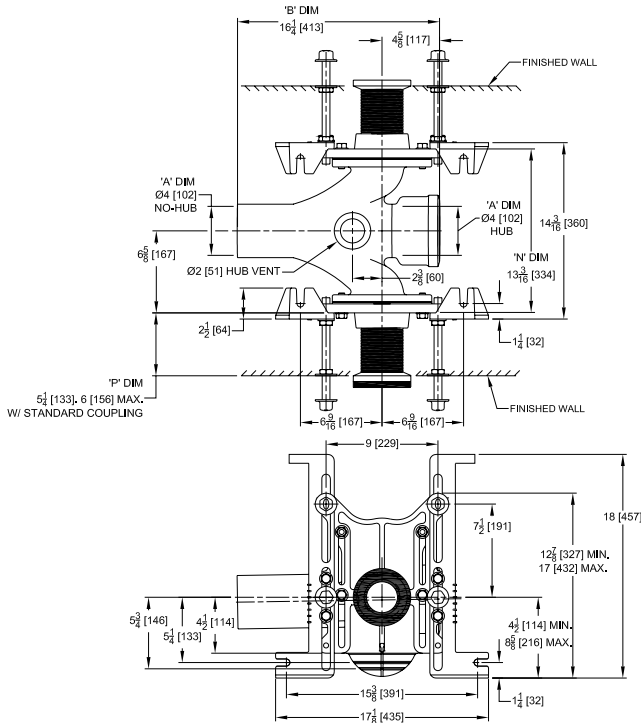




Z1201-HD4

EZCARRY® ADJUSTABLE HORIZONTAL HIGH PERFORMANCE
BACK-TO-BACK SIPHON JET HUB & SPIGOT WATER
CLOSET CARRIER SYSTEM

Design and Dimensional Data (inches and [mm]) are Subject to Manufacturing Tolerances and Change Without Notice



Product Number	Approx. Wt. lbs [kg]
Z1201-HD4	110 [50]

- Note:**
- Z coupling, Min. 'P' Dim. Obtainable=2 [51].EZ-Set™ Coupling, Min. 'P' Dim. Obtainable=4-1/4 [108] or 2-1/16 [52] for 12 [305] NPT.
 - Feet bolted to floor using min. 1/2 [13] dia. anchors.

Z1201-HD4 Illustrated

ENGINEERING SPECIFICATION: ZURN Z1201-HD4

EZCarry® horizontal siphon jet water closet carrier system with high performance waterway and 4" [102mm] hub and spigot connections. System includes Dura-Coated cast iron double main fitting with hydro-mechanically optimized sweep and extended 2" [51mm] vent, adjustable faceplates, QuickFit™ faceplate gaskets, floor mounted pre-fab slotted foot supports with top anchoring pre-fab support base, fixture bolts, trim, stud protectors, bonded "Neo-Seal" gaskets, and corrosion resistant, adjustable 3" [76mm] dia. X 6" [152mm] couplings with integral test caps designed to increase flow velocity and line carry. EZCarry® system complies with the requirements of ASME A112.6.1M up to a 500 lbs [227 kg] static load rating.

OPTIONS (Check/specify appropriate options)
___ Z1201-HD4 4 [102] Hub and Spigot Back-to-Back Inlet (Double)

PREFIXES
___ Z D.C.C.I. System with Zurn ZZ Adjustable Coupling*
___ ZQ D.C.C.I. System with NPT Faceplate, Non-Adjustable Coupling

SUFFIXES	___ -F	Floor Mounted, Back Outlet Fixture Support
___ -A Auxiliary Support Assembly (For 'P' Dim. Greater than 18 [457])	___ -G	Galvanized Cast Iron
___ -CC Corrosion Resistant Cast Iron Coupling (2-1/4 [57] to 12 [305])	___ -M	Auxiliary Foot Support (for 'P' Dim. 7 thru 18 [178 thru 457])
___ -CE EZ-Set™ Coupling (NPSM 6 [152], 12 [305] or custom) (NPT 12 [305] or custom)	___ -RYK17	One Piece Unistrut Pre-Fab Foot
___ -CL Custom Length Standard Coupling with Integral Test Cap (Specify Length 4, 8, 10, 12 [102, 203, 254, 305])	___ -VP	Vandal-Proof Trim
___ -CS 2-1/4 [57] Polymer Coupling with Integral Test Cap	___ -X2	2 [51] Carrier Foot Extension Assembly
	___ -X3	3 [76] Carrier Foot Extension Assembly
	___ -45	Finishing Frame for Siphon Jet System
	___ -50	Flush Valve Supply Support for Water Closets

* Regularly furnished unless otherwise specified.

- ⚠ **WARNING:** Cancer and Reproductive Harm - www.P65Warnings.ca.gov
- ⚠ **ADVERTENCIA:** Cáncer y daño reproductivo - www.P65Warnings.ca.gov
- ⚠ **AVERTISSEMENT:** Cancer et effets néfastes sur la reproduction - www.P65Warnings.ca.gov