



# Z1400-BZ1-DP

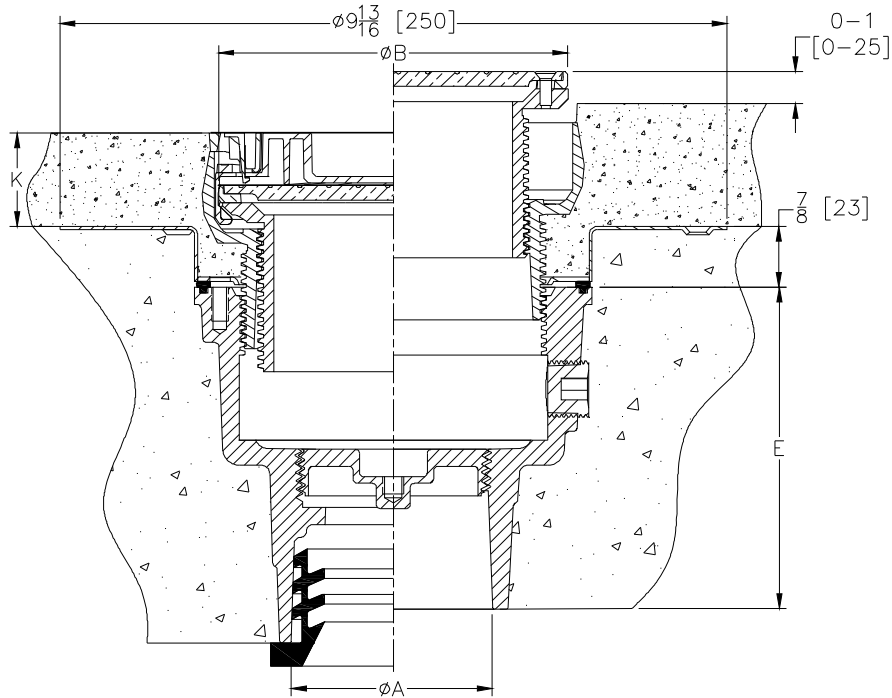
FLOOR CLEANOUT WITH "TYPE B" COVER, DECK PLATE AND EZ1™ TECHNOLOGY

SPECIFICATION SHEET

TAG \_\_\_\_\_

**PATENT  
PENDING**

Dimensional Data (inches and [ mm ]) are Subject to Manufacturing Tolerances and Change Without Notice



Dimensions In Inches [mm]				Approx. Wt. Lbs [kg]
A	B	K		
Pipe Size	Cover Dia.	Min	Max	
2-3 [51-76]	5 [127]	29/32 [23]	1-13/16 [46]	16 [7]

**ENGINEERING SPECIFICATION:**

Zurn Z1400-BZ1-DP cleanout, Dura-Coated cast iron body with gas and water tight cleanout plug, stainless steel deck plate, and top assembly. EZ1 drainage series is engineered to simplify product installation, comprised of concrete shield to provide up to 1" [25] of vertical post pour adjustment, pre-packaged shims for tilt correction, and integrated, self-contained "Type B" light duty scoriated cover with rough-in cover for protection during concrete pour. Cleanout is designed in accordance with ASME A112.36.2M.

**OPTIONS** (Check/specify appropriate options)

PIPE SIZE	(Specify size/type) OUTLET	'E' BODY HT. DIM.
2-3 [51-76]	_____ NH No-Hub	4-3/4 [121]
2 [51]	_____ NL Neo-Loc	5-1/4 [133]
3 [76]	_____ NL Neo-Loc	4-3/8 [111]

**PREFIXES**

- \_\_\_\_\_ ZB D.C.C.I. w/ Polished Bronze Top
- \_\_\_\_\_ ZN D.C.C.I. w/ Polished Nickel Bronze Top\*
- \_\_\_\_\_ ZS D.C.C.I. w/ Polished Stainless Steel Top

**SUFFIXES**

- \_\_\_\_\_ -AR Acid Resisting Epoxy Coated Finish
- \_\_\_\_\_ -BP Bronze Plug [Not Available for 3 [76] Neo-Loc Outlet]
- \_\_\_\_\_ -CC Stainless Steel Clamp Collar
- \_\_\_\_\_ -G Galvanized Cast Iron
- \_\_\_\_\_ -TC Neo-Loc Test Cap Gasket (2-3 [51-76] NL Bottom Outlet Only)
- \_\_\_\_\_ -UP 1-3/4 [44] Pre-Pour Adjustment Exentsion Adapter
- \_\_\_\_\_ -VP Vandal-Proof Screws

\* Regularly furnished unless otherwise specified.