



Z886-HDG

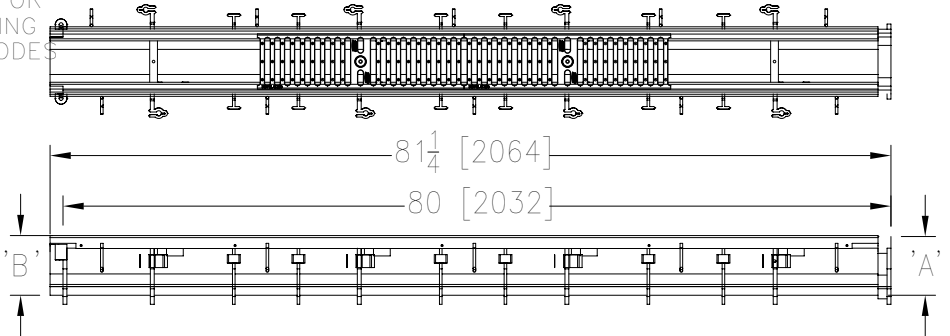
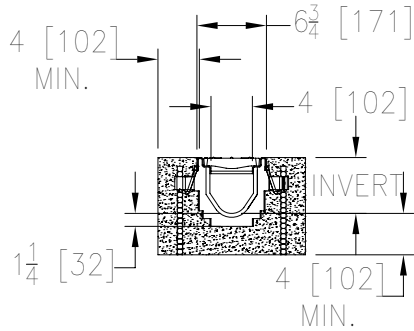
6-3/4 [171] WIDE REVEAL TRENCH DRAIN SYSTEM
W/ HEAVY-DUTY GALVANIZED FRAME

SPECIFICATION SHEET

TAG _____

Les dimensions (pouces et [mm]) dépendent des tolérances de fabrication et peuvent être modifiées sans préavis

SPECIFYING ENGINEER IS RESPONSIBLE FOR CONCRETE ENCASEMENT AND REINFORCING BASED UPON APPLICATION AND LOCAL CODES



NOTE: + Actual Channel length is 81 1/4 [2064] to allow for overlap.

ENGINEERING SPECIFICATION: Zurn Z886-HDG

Channels shall be 80 [2032] long, 6-3/4 [171] wide reveal and have a 4 [102] throat. Modular channel sections shall be made of 0% water absorbent High Density Polyethylene (HDPE). Shall have a positive mechanical connection between channel sections that will not separate during the installation and shall mechanically lock into the concrete surround every 10 [254]. Channels shall weigh less than 2.31 lbs.[1.05kg] per linear foot, have a smooth, 1-1/2 [38] radiused self cleaning bottom with a Manning's coefficient of .009 and .75% or neutral 0% built in slope. Channels shall have rebar clips standard to secure trench in its final location. Shall be provided with standard GDC grates that lock down to frame. Zurn 6 [152] wide reveal Galvanized Ductile Iron Slotted Grate conforming to ASTM specification A536-84, Grade 80-55-06. Ductile Iron grate is rated class C per the DIN EN1433 top load classifications. Supplied in 20 [508] nominal lengths with 1/2 [13] wide slots, and 3/4 [19] bearing depth. Grate has an open area of 28.1 sq. in per ft. [59,463 sq. mm per meter]. The .105 [2.66] thick Heavy-Duty Galvanized Carbon Steel Frame Assembly conforms to ASTM specification A36 and Galvanizing conforms to ASTM specification A123 with 10 - 4 [102] long concrete anchors per 80 [2032]. Grate lockdown bars are to be integral to the frame. All welds must be performed by a certified welder per ASTM standard AWS D1.1. Frames Shall be produced in the U.S.A.

PREFIX OPTIONS (Check/specify appropriate options)

___ Z Six-foot, Eight-inch High Density Polyethylene (HDPE)*

SUFFIX OPTIONS (Check/specify appropriate options)

Outlet Adapters Add/Each

___ -E1 Closed End Cap ___ -U2 2 [51] No-Hub Bottom Outlet
___ -E2 2 [51] No-Hub End Outlet ___ -U3 3 [76] No-Hub Bottom Outlet
___ -E3 3 [76] No-Hub End Outlet ___ -U4 4 [102] No-Hub Bottom Outlet
___ -E4 4 [102] No-Hub End Outlet ___ -U6 6 [152] No-Hub Bottom Outlet
___ -E6 6 [152] No-Hub End Outlet

Frame Options

___ -SW Sidewall Extension - 9 [229] High
___ -SW2 Sidewall Extension - 18 [457] High

Grate Options (Load Classifications are per DIN EN1433)

___ -BDC Black Acid Resistant Epoxy Coated Ductile Grate - Class C
___ -BDE Black Acid Resistant Epoxy Coated Ductile Grate - Class E
___ -BG Galvanized Ductile Iron Bar Grate - Class C
___ -DBG Ductile Iron Cast Bar Grate - Class C
___ -DC Ductile Iron Solid Cover - Class C
___ -DGC Ductile Iron Slotted Grate - Class C
___ -DGE Ductile Iron Slotted Grate - Class E
___ -GDC Galvanized Ductile Iron Slotted Grate - Class C*
___ -GDE Galvanized Ductile Iron Slotted Grate - Class E
___ -GHPD Galvanized Heel-Proof Ductile Grate - Class B
___ -GHPDE Galvanized Heel-Proof Ductile Grate - Class E
___ -HPD Heel-Proof Ductile Slotted Grate - Class B
___ -HPDE Heel-Proof Ductile Slotted Grate - Class E
___ -RFGC Reinforced Slotted Galvanized Grate - Class C
___ -RPGC Reinforced Perforated Galvanized Grate - Class C
___ -RPGRC Reinforced Perforated Galvanized Reverse Punch Grate - Class C

Miscellaneous Options

___ -VP Vandal-Proof Lockdown
___ -JC Joint Connector

Trench No.	'A' Shallow Inv.	'B' Deep Inv.	Flow		
			(cfs)	(gpm)	(lps)
8601	3.50 [89]	4.10 [104]	0.21	93	6
8602	4.10 [104]	4.70 [119]	0.27	122	8
8603	4.70 [119]	5.30 [135]	0.34	152	10
8603N	5.30 [135]	5.30 [135]	-	-	-
8604	5.30 [135]	5.90 [150]	0.41	183	12
8605	5.90 [150]	6.50 [165]	0.48	214	13
8606	6.50 [165]	7.10 [180]	0.55	245	15
8606N	7.10 [180]	7.10 [180]	-	-	-
8607	7.10 [180]	7.70 [196]	0.62	276	17
8608	7.70 [196]	8.30 [211]	0.69	308	19
8609	8.30 [211]	8.90 [226]	0.76	339	21
8610	8.90 [226]	9.50 [241]	0.83	371	23
8611	9.50 [241]	10.10 [257]	0.90	403	25
8612	10.10 [257]	10.70 [272]	0.97	435	27
8612N	10.70 [272]	10.70 [272]	-	-	-
8613	10.70 [272]	11.30 [287]	1.04	467	29
8614	11.30 [287]	11.90 [302]	1.11	498	31
8615	11.90 [302]	12.50 [318]	1.18	530	33

MADE in the U.S.A. (Load Classifications are per DIN EN1433)

___ -BDE-USA Black Acid Resistant Epoxy Coated Ductile Grate - Class E
___ -DGC-USA Ductile Iron Slotted Grate - Class C (Substitute DGE-USA)
___ -DGE-USA Ductile Iron Slotted Grate - Class E
___ -GDC-USA Galvanized Ductile Slotted Grate - Class C
___ -GDE-USA Galvanized Ductile Slotted Grate - Class E
___ -GHPDE-USA Galvanized Heel-Proof Ductile Grate - Class E
___ -HPDE-USA Heel-Proof Ductile Slotted Grate - Class E
___ -PPC Plastic Perforated Grate - Class B

Miscellaneous Options

___ -DB Bottom Dome Strainer

* Regularly furnished unless otherwise specified.

Zurn Industries, LLC | Specification Drainage Operation
1801 Pittsburgh Avenue, Erie, PA 16502, Ph. 855.663.9876

In Canada | Zurn Industries Limited
7900 Goreway Drive, Unit 10, Brampton, Ontario L6T 5W6, Ph. 877.892.5216

www.zurn.com

Rev. G
Date: 03/20/24
C.N. No. 145919
Prod. | Dwg. No. Z886-HDG