



# Z-894

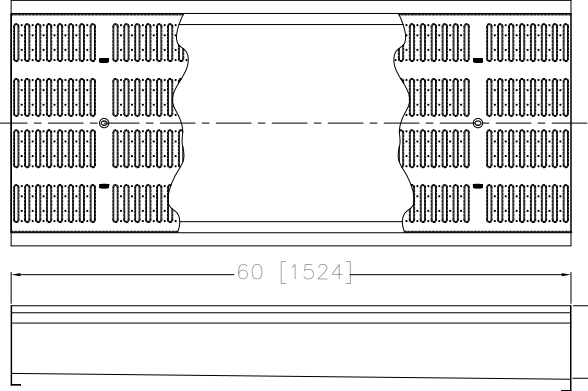
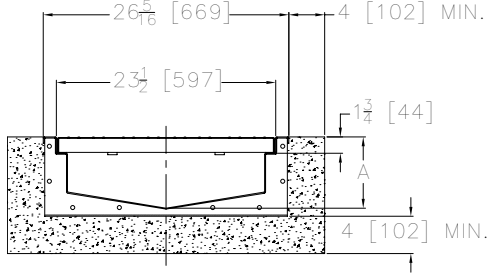
## 24 [610] WIDE TRENCH DRAIN SYSTEM

SPECIFICATION SHEET

TAG \_\_\_\_\_

Design and Dimensional Data (inches and [ mm ]) are Subject to Manufacturing Tolerances and Change Without Notice

SPECIFYING ENGINEER IS RESPONSIBLE FOR CONCRETE ENCASEMENT AND REINFORCING BASED UPON APPLICATION AND LOCAL CODES.



NOTE: Custom invert minimum of 4.5 [114].

ENGINEERING SPECIFICATION: ZURN Z-894 24" Wide Pre-Sloped Trench Drainage System with 1/8" per foot slope. #12 Gage Type 304 Stainless Steel drain channel with bolted flanged connection complete with rubber flange gasket, and stamped stainless steel grate.

**OPTIONS** (Check/specify appropriate options)

**PREFIXES**

\_\_\_ Z #12 Gage Type 304 Stainless Steel Trench with Stamped Stainless Steel Grate\*

**SUFFIXES**

- \_\_\_ -DB Bottom Drop in Bucket
- \_\_\_ -E1 Closed End Cap
- \_\_\_ -E3 3" No-Hub End Outlet
- \_\_\_ -E4 4" No-Hub End Outlet
- \_\_\_ -E6 6" No-Hub End Outlet
- \_\_\_ -E8 8" No Hub End Outlet
- \_\_\_ -FS Fabricated Stainless Steel Slotted Grate
- \_\_\_ -GG Fiberglass Grate
- \_\_\_ -GL Grate Lockdown Assembly
- \_\_\_ -K Anchor Flange
- \_\_\_ -KC Clamp Collar and Pan
- \_\_\_ -PS Perforated Stainless Steel Grate
- \_\_\_ -RFS Reinforced Stainless Steel Slotted Grate
- \_\_\_ -RPS Reinforced Stainless Steel Perforated Grate
- \_\_\_ -SBG Stainless Steel Bar Grate
- \_\_\_ -U2 2" No-Hub Bottom Outlet
- \_\_\_ -U3 3" No-Hub Bottom Outlet
- \_\_\_ -U4 4" No-Hub Bottom Outlet
- \_\_\_ -U6 6" No-Hub Bottom Outlet
- \_\_\_ -U8 8" No Hub Bottom Outlet
- \_\_\_ -VP Vandal-Proof Secured Grate/Cover

Channel Number	Overall Depth**		Max. Flow Rate (GPM)	Approx. Wt. Lbs. [kg]
	A Min.	B Max.		
89401	6.00	6.63	1299	70
89402	6.63	7.25	1636	72
89402N	7.25	7.25	-	73
89403	7.25	7.88	1991	74
89404	7.88	8.50	2362	76
89404N	8.50	8.50	-	77
89405	8.50	9.13	2746	78
89406	9.13	9.75	3142	80
89406N	9.75	9.75	-	81
89407	9.75	10.38	3548	82
89408	10.38	11.00	3963	84
89408N	11.00	11.00	-	85
89409	11.00	11.63	4387	86
89410	11.63	12.25	4817	88
89410N	12.25	12.25	-	89
89411	12.25	12.88	5253	90
89412	12.88	13.50	5696	92
89412N	13.50	13.50	-	93
89413	13.50	14.13	6143	94
89414	14.13	14.75	6595	96
89414N	14.75	14.75	-	97
89415	14.75	15.38	7051	98
89416	15.38	16.00	7512	100
89416N	16.00	16.00	-	101
89417	16.00	16.63	7975	102
89418	16.63	17.25	8442	104
89418N	17.25	17.25	-	105
89419	17.25	17.88	8912	106
89420	17.88	18.50	9385	108

\*\* Custom invert minimum of 4.5"

\* Regularly furnished unless otherwise specified

**⚠ WARNING:** Cancer and Reproductive Harm - [www.P65Warnings.ca.gov](http://www.P65Warnings.ca.gov)

**⚠ ADVERTENCIA:** Cáncer y daño reproductivo - [www.P65Warnings.ca.gov](http://www.P65Warnings.ca.gov)

**⚠ AVERTISSEMENT:** Cancer et effets néfastes sur la reproduction - [www.P65Warnings.ca.gov](http://www.P65Warnings.ca.gov)

Zurn Industries, LLC | Specification Drainage Operation  
1801 Pittsburgh Avenue, Erie, PA 16502, Ph. 855.663.9876

In Canada | Zurn Industries Limited  
7900 Goreway Drive, Unit 10, Brampton, Ontario L6T 5W6, Ph. 877.892.5216

[www.zurn.com](http://www.zurn.com)

Rev. E  
Date: 04/07/2022  
C.N. No. 144324  
Prod. | Dwg. No. Z-894