



ZS895

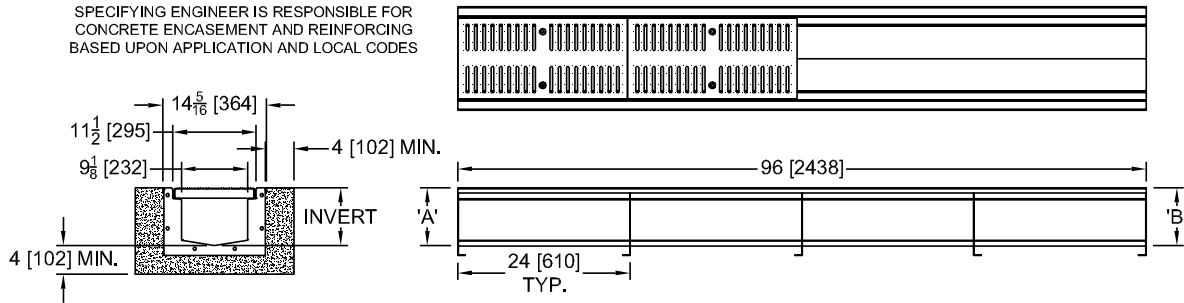
12 [305] WIDE REVEAL TRENCH DRAIN SYSTEM W/ "V" BOTTOM

SPECIFICATION SHEET

TAG _____

Design and Dimensional Data (inches and [mm]) are Subject to Manufacturing Tolerances and Change Without Notice

SPECIFYING ENGINEER IS RESPONSIBLE FOR CONCRETE ENCASEMENT AND REINFORCING BASED UPON APPLICATION AND LOCAL CODES



ENGINEERING SPECIFICATION: Zurn ZS895

Channels shall be 96" [2438mm] long, 12" [305mm] wide and have a 9-1/8" [232mm] throat. Modular channel sections shall be made of 12ga. fabricated Stainless Steel conforming to ASTM A-240 (type 304). Channels shall have a bolted, flanged connection between channel sections that will not separate during the installation, gaskets available. Channels shall weigh less than 4.15 lbs. [1.05kg] per linear foot, have a smooth, 1-1/2" [38mm] radiused self cleaning bottom with a Manning's coefficient of .009 and 1.04% or neutral 0% built in slope. Channels shall have feet for patty pour or leveling studs standard to secure trench in its final location. Shall be provided with standard FS grates that lock down to frame. Zurn 12" [305 mm] wide reveal Fabricated Stainless Steel Grate conforming to ASTM specification A-240, (type 304), is rated class A per the DIN EN1433 top load classification. Supplied in 24" [610mm] nominal lengths with 5/16" [8mm] wide slots, and 1-1/4" [32mm] bearing depth. Grate has an open area of 25.61 sq. in per ft. [542.09 sq. cm per meter]. Channels shall be produced in the U.S.A.

PREFIXES OPTIONS (Check/specify appropriate options)

___ ZS Eight-foot, "V" Bottom, Type 304 Stainless Steel*

SUFFIXES OPTIONS (Check/specify appropriate options)

Outlet Adapters Add/Each

- ___ -E1 Closed End Cap
- ___ -E4 4 [102] No-Hub End Outlet
- ___ -E6 6 [152] No-Hub End Outlet
- ___ -E8 8 [203] No-Hub End Outlet
- ___ -U4 4 [102] No-Hub Bottom Outlet
- ___ -U6 6 [152] No-Hub Bottom Outlet
- ___ -U8 8 [203] No-Hub Bottom Outlet

GRATE OPTIONS (Load Classifications are per DIN EN1433)

- ___ -BDC Black Acid Resistant Epoxy Coated Ductile Grate - Class C
- ___ -BDE Black Acid Resistant Epoxy Coated Ductile Grate - Class E
- ___ -BDF Black Acid Resistant Ductile Grate - Class F
- ___ -DC Ductile Iron Solid Cover - Class C
- ___ -DGC Ductile Iron Slotted Grate - Class C
- ___ -DGE Ductile Iron Slotted Grate - Class E
- ___ -DGF Ductile Iron Slotted Grate - Class F
- ___ -HPD Heel-Proof Ductile Slotted Grate - Class C
- ___ -HPDE Heel-Proof Ductile Slotted Grate - Class E
- ___ -RFSC Reinforced Slotted Stainless Steel Grate - Class C
- ___ -RPSC Reinforced Perforated Stainless Steel Grate - Class C
- ___ -RPSRC Reinforced Perforated Stainless Steel Reversed Punch Grate

MADE in the U.S.A.

- ___ -ADA-USA Meets Americans with Disabilities Act Requirements - Class C
- ___ -DGC-USA Ductile Iron Slotted Grate - Class C
- ___ -DGE-USA Ductile Iron Slotted Grate - Class E
- ___ -FS Fabricated Stainless Steel Slotted Grate - Class A*
- ___ -GG Fiberglass Grate - Class A
- ___ -HPDE-USA Heel-Proof Ductile Slotted Grate - Class E
- ___ -PS Perforated Stainless Steel Grate - Class A
- ___ -SBG-L Stainless Steel Bar Grate - Class C
- ___ -SBGS Serrated Stainless Steel Bar Grate CUSTOM - Class C
- ___ -SBGE Slotted Bar Grate, Stainless Steel - Class E

* Regularly furnished unless otherwise specified

- WARNING:** Cancer and Reproductive Harm - www.P65Warnings.ca.gov
- ADVERTENCIA:** Cáncer y daño reproductivo - www.P65Warnings.ca.gov
- AVERTISSEMENT:** Cancer et effets néfastes sur la reproduction - www.P65Warnings.ca.gov

Zurn Industries, LLC | Flo-Thru Division
1801 Pittsburgh Avenue, Erie, PA 16502, Ph. 855.663.9876

In Canada | Zurn Industries Limited
7900 Goreway Drive, Unit 10, Brampton, Ontario L6T 5W6, Ph. 877.892.5216

www.zurn.com

Trench No.*	Dimension in Inches [mm]				Flow (ZS profile only)		
	'A' Shallow Inv.		'B' Deep Inv.		(cfs)	(gpm)	(lps)
S89501	6.00	[152.4]	7.00	[177.8]	1.286	577	36
S89502	7.00	[177.8]	8.00	[203.2]	2.324	1043	66
S89503	8.00	[203.2]	9.00	[228.6]	2.705	1214	77
S89504	9.00	[228.6]	10.00	[254]	3.095	1389	88
S89505	10.00	[254]	11.00	[279.4]	3.487	1565	99
S89506	11.00	[279.4]	12.00	[304.8]	3.886	1744	110
S89507	12.00	[304.8]	13.00	[330.2]	4.289	1925	121
S89508	13.00	[330.2]	14.00	[355.6]	4.692	2106	126
S89509	14.00	[355.6]	15.00	[381]	5.102	2290	133
S89510	15.00	[381]	16.00	[406.4]	5.512	2474	156
S89511	16.00	[406.4]	17.00	[431.8]	5.924	2659	168
S89512	17.00	[431.8]	18.00	[457.2]	6.341	2846	180

*All channels include a neutral option. neutral channels use the deep invert of its channel number.
EX: S89503N has an invert of 9.00 [228.6]

MADE in the U.S.A. Miscellaneous Options

- ___ -DB Bottom Dome Strainer
- ___ -K Anchor Flange
- ___ -KC Clamp Collar and Pan
- ___ -W Single Piece of Welded Trench

Miscellaneous Options

- ___ -VP Vandal-Proof Lockdown

* Regularly furnished unless otherwise specified

Rev. B
Date: 03/20/23
C.N. No. 145189
Prod. | Dwg. No. ZS895