



# Z6953-XL-CV Sensor Faucet

## EZ Gear-Driven Technology

No touch. No fuss. Our line of EZ Gear-Driven Sensor Faucets deliver reliability, precision, and efficiency to your commercial restroom. Thanks to the dual action of the ceramic disc cartridge and the same motor gear-driven operation found in our E-Z Flush units, Camaya outperforms and outlasts other faucets. It intuitively senses the user without delay, too much force, or wasting water. Plus, it's easy to install and virtually forget about long after.



CAMAYA SERIES

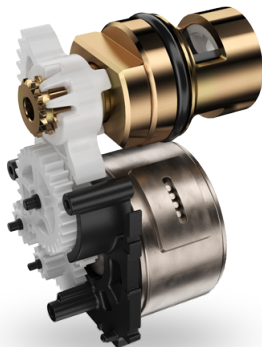
### *Inside the Technology*

#### **LASTING PERFORMANCE**

Replacing old compression sealing technology, ceramic disc cartridges withstand 1,000,000 cycles ... and counting.

#### **ENGINEERED PRECISION**

Tested and proven, the gear-driven operation provides a soft close, ultimately delivering an effortless, quiet water flow.



#### **Reliability**

Engineered with our proven Zurn AquaSpec® ceramic disc technology, the Camaya withstands 1,000,000 cycles...and counting. It's also backed by our limited warranty. Compared to traditional solenoid faucets, the ceramic disc cartridge eliminates old compression sealing technology. There are fewer moving parts to disrupt the water pathway and less wear on the faucet – all adding up to a longer lifespan.



#### **Precision**

Timing is everything when it comes to an intuitive user experience. Meticulously designed and positioned for precise sensor detection, Camaya activates water when the user is ready without delay. Tested and proven, the EZ gear-driven technology delivers soft close operation for an effortless, quiet flow.



#### **Efficiency**

Eco-friendly can be user friendly. Camaya meets lead-free compliance, making it a safe choice for users and the environment. It also reduces water use and costs.

Patented and Patents Pending



Aesthetics aren't overshadowed by the performance. The sleek, polished shine appeals to modern restroom environments. Designers can breathe new life into a space that is often high traffic and highly utilitarian.



POLISHED CHROME



BRUSHED NICKEL

## Z6953-XL-CV

### Camaya Series with EZ Gear-Driven Technology

ADA compliant, AC powered, chrome-plated sensor faucet for retrofit and new construction

Product features include:

- Occupant detection
  - Infrared convergence-type proximity sensor
  - 30 second timeout feature
- Spout module
  - Standard chrome-plated cast brass
  - Two finishes
- Long life motor-driven ceramic valve

### Flow Control Options:

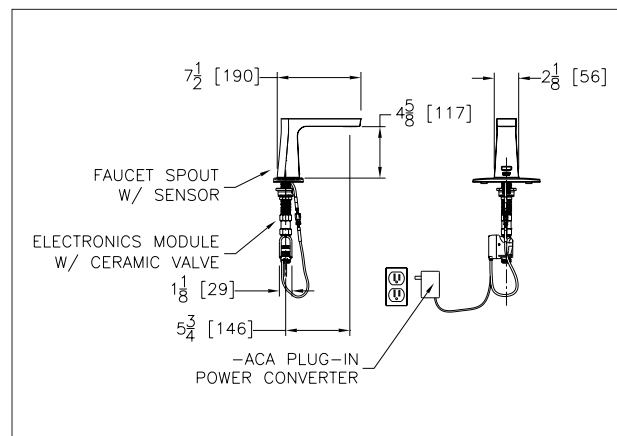
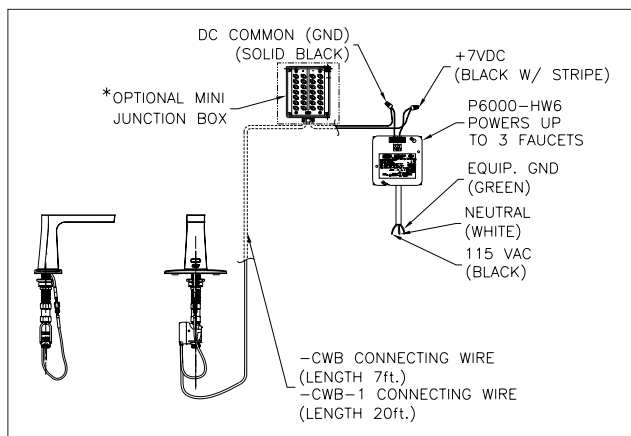
- ES\* 1.5 gpm/5.7 Lpm Aerator
- FS 0.5 gpm/1.9 Lpm Spray
- JS\* 1.5 gpm/5.7 Lpm Laminar
- LS\* 1.0 gpm/3.8 Lpm Aerator
- MS 0.35 gpm/1.3 Lpm Spray

### Suffix Options:

- MT Mixing Tee
- MV Temperature Mixing Valve
- SH Supply Hoses for Mixing Valve
- TMV Thermostatic Mixing Valve for Multiple Faucets
- TMV-1 Thermostatic Mixing Valve for Single Faucets

### Power Options:

- ACA 6 VDC Plug-In Power Converter
- HW6 Hardwired Power Converter
- CWB Connector Wire for Hardwire Install (7 ft)
- CWB-1 Connector Wire for Hardwire Install (20 ft)
- MJ Mini Junction Box



ZURN INDUSTRIES, LLC 511 West Freshwater Way, Milwaukee, WI 53204, 855.663.9876

In Canada: ZURN INDUSTRIES LIMITED 7900 Goreway Drive, Unit 10, Brampton, Ontario L6T 5W6, 877.892.5216

Form No. 240-174, 2/19



US 1.855.ONE.ZURN CANADA 1.877.892.5216 ZURN.COM